

Return of Organization Exempt From Income Tax

2005

Under section 501(c), 527, or 4947(a)(1) of the Internal Revenue Code (except black lung benefit trust or private foundation)

Open to Public Inspection

Department of the Treasury
Internal Revenue Service

The organization may have to use a copy of this return to satisfy state reporting requirements.

A For the 2005 calendar year, or tax year beginning, 2005, and ending

- B** Check if applicable:
- Address change
 - Name change
 - Initial return
 - Final return
 - Amended return
 - Application pending

Please use IRS label or print or type. See specific instructions.

Tides Foundation
PO Box 29903
San Francisco, CA 94129-0903

D Employer Identification Number
51-0198509

E Telephone number
415-561-6400

F Accounting method: Cash Accrual
 Other (specify) _____

Section 501(c)(3) organizations and 4947(a)(1) nonexempt charitable trusts must attach a completed Schedule A (Form 990 or 990-EZ).

H and **I** are not applicable to section 527 organizations

H (a) Is this a group return for affiliates? Yes No

H (b) If 'Yes,' enter number of affiliates _____

H (c) Are all affiliates included? Yes No
(If 'No,' attach a list See instructions)

H (d) Is this a separate return filed by an organization covered by a group ruling? Yes No

I Group Exemption Number _____

M Check if the organization is not required to attach Schedule B (Form 990, 990-EZ, or 990-PF).

G Web site: www.Tides.org

J Organization type (check only one): 501(c) 3 (insert no.) 4947(a)(1) or 527

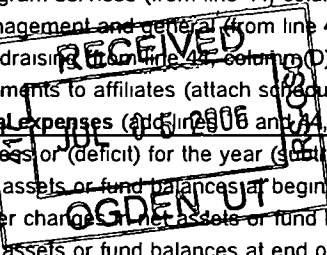
K Check here if the organization's gross receipts are normally not more than \$25,000. The organization need not file a return with the IRS, but if the organization chooses to file a return, be sure to file a complete return. **Some states require a complete return.**

L Gross receipts: Add lines 6b, 8b, 9b, and 10b to line 12 **243,858,890.**

Part I Revenue, Expenses, and Changes in Net Assets or Fund Balances (See Instructions)

REVENUE	1 Contributions, gifts, grants, and similar amounts received:			
	a Direct public support	1a	81,044,306.	
	b Indirect public support	1b		
	c Government contributions (grants)	1c		
	d Total (add lines 1a through 1c) (cash \$ 61,074,681. noncash \$ 19,969,625.)	1d		81,044,306.
	2 Program service revenue including government fees and contracts (from Part VII, line 93)	2		685,208.
	3 Membership dues and assessments	3		
	4 Interest on savings and temporary cash investments	4		56,612.
	5 Dividends and interest from securities	5		4,370,432.
	6a Gross rents	6a		
	b Less: rental expenses	6b		
	c Net rental income or (loss) (subtract line 6b from line 6a)	6c		
7 Other investment income (describe _____)	7			
8a Gross amount from sales of assets other than inventory	(A) Securities		(B) Other	
	157,397,476.	8a	225.	
	b Less: cost or other basis and sales expenses	153,686,711.	8b	2,152.
	c Gain or (loss) (attach schedule) Statement 1	3,710,765.	8c	-1,927.
d Net gain or (loss) (combine line 8c, columns (A) and (B))	8d		3,708,838.	
9 Special events and activities (attach schedule). If any amount is from gaming, check here <input type="checkbox"/>				
a Gross revenue (not including \$ _____ of contributions reported on line 1a)	9a			
b Less: direct expenses other than fundraising expenses	9b			
c Net income or (loss) from special events (subtract line 9b from line 9a)	9c			
10a Gross sales of inventory, less returns and allowances	10a			
	b Less: cost of goods sold	10b		
	c Gross profit or (loss) from sales of inventory (attach schedule) (subtract line 10b from line 10a)	10c		
11 Other revenue (from Part VII, line 103)	11		304,631.	
12 Total revenue (add lines 1d, 2, 3, 4, 5, 6c, 7, 8d, 9c, 10c, and 11)	12		90,170,027.	
EXPENSES	13 Program services (from line 44, column (B))	13		91,891,142.
	14 Management and general (from line 44, column (C))	14		1,632,268.
	15 Fundraising (from line 44, column (D))	15		87,167.
	16 Payments to affiliates (attach schedule)	16		
	17 Total expenses (add lines 13, 14, 15, and 16)	17		93,610,577.
18 Excess or (deficit) for the year (subtract line 17 from line 12)	18		-3,440,550.	
19 Net assets or fund balances at beginning of year (from line 73, column (A))	19		144,299,585.	
20 Other changes in net assets or fund balances (attach explanation) See Statement 2	20		-3,815,907.	
21 Net assets or fund balances at end of year (combine lines 18, 19, and 20)	21		137,043,128.	

SCANNED JUL 20 2006



Part II Statement of Functional Expenses All organizations must complete column (A). Columns (B), (C), and (D) are required for section 501(c)(3) and (4) organizations and section 4947(a)(1) nonexempt charitable trusts but optional for others.

Do not include amounts reported on line 6b, 8b, 9b, 10b, or 16 of Part I.		(A) Total	(B) Program services	(C) Management and general	(D) Fundraising
22	Grants and allocations (att sch) See Stm 3 (cash \$ 85941477. non-cash \$ _____)				
	If this amount includes foreign grants, check here <input checked="" type="checkbox"/>	22 85,941,477.	85,941,477.		
23	Specific assistance to individuals (att sch)	23			
24	Benefits paid to or for members (att sch)	24			
25	Compensation of officers, directors, etc	25 285,613.	228,490.	57,123.	0.
26	Other salaries and wages	26 2,218,607.	1,927,588.	259,264.	31,755.
27	Pension plan contributions	27 55,279.	48,028.	7,251.	
28	Other employee benefits	28 350,921.	304,890.	38,409.	7,622.
29	Payroll taxes	29 189,703.	164,819.	24,884.	
30	Professional fundraising fees	30			
31	Accounting fees	31 96,398.		96,398.	
32	Legal fees	32 60,171.	52,279.	7,892.	
33	Supplies	33 68,199.	59,253.	8,946.	
34	Telephone	34 71,080.	61,756.	9,324.	
35	Postage and shipping	35 22,192.	19,281.	2,911.	
36	Occupancy	36 199,440.	173,279.	26,161.	
37	Equipment rental and maintenance	37 42,499.	36,924.	5,575.	
38	Printing and publications	38 104,789.	91,044.	11,945.	1,800.
39	Travel	39 558,928.	485,612.	38,441.	34,875.
40	Conferences, conventions, and meetings	40 56,931.	49,463.	7,468.	
41	Interest	41 135,173.		135,173.	
42	Depreciation, depletion, etc (attach schedule)	42 115,068.	99,974.	15,094.	
43	Other expenses not covered above (itemize)				
a	See Statement 4	43a 3,038,109.	2,146,985.	880,009.	11,115.
b	-----	43b			
c	-----	43c			
d	-----	43d			
e	-----	43e			
f	-----	43f			
g	-----	43g			
44	Total functional expenses. Add lines 22 through 43 (Organizations completing columns (B) - (D), carry these totals to lines 13 - 15)	44 93,610,577.	91,891,142.	1,632,268.	87,167.

Joint Costs. Check if you are following SOP 98-2.
 Are any joint costs from a combined educational campaign and fundraising solicitation reported in (B) Program services? Yes No
 If 'Yes,' enter (i) the aggregate amount of these joint costs \$ _____; (ii) the amount allocated to Program services \$ _____; (iii) the amount allocated to Management and general \$ _____; and (iv) the amount allocated to Fundraising \$ _____

Part III Statement of Program Service Accomplishments

Form 990 is available for public inspection and, for some people, serves as the primary or sole source of information about a particular organization. How the public perceives an organization in such cases may be determined by the information presented on its return. Therefore, please make sure the return is complete and accurate and fully describes, in Part III, the organization's programs and accomplishments.

What is the organization's primary exempt purpose? ▶ <u>Grantmaking</u> All organizations must describe their exempt purpose achievements in a clear and concise manner. State the number of clients served, publications issued, etc. Discuss achievements that are not measurable. (Section 501(c)(3) and (4) organizations and 4947(a)(1) nonexempt charitable trusts must also enter the amount of grants and allocations to others.)	Program Service Expenses (Required for 501(c)(3) and (4) organizations and 4947(a)(1) trusts, but optional for others)
<p>a <u>Grants program: The principal purpose of the Tides Foundation is grantmaking. A complete list of the grantees for the calendar year is provided in Statement 3.</u></p> <p>(Grants and allocations \$ <u>85,941,477.</u>) If this amount includes foreign grants, check here ▶ <input checked="" type="checkbox"/></p>	91,891,142.
<p>b</p> <p>(Grants and allocations \$) If this amount includes foreign grants, check here ▶ <input type="checkbox"/></p>	
<p>c</p> <p>(Grants and allocations \$) If this amount includes foreign grants, check here ▶ <input type="checkbox"/></p>	
<p>d</p> <p>(Grants and allocations \$) If this amount includes foreign grants, check here ▶ <input type="checkbox"/></p>	
<p>e Other program services (Grants and allocations \$) If this amount includes foreign grants, check here ▶ <input type="checkbox"/></p>	
<p>f Total of Program Service Expenses (should equal line 44, column (B), Program services) ▶</p>	91,891,142.

BAA

Part IV Balance Sheets (See Instructions)

Note: Where required, attached schedules and amounts within the description column should be for end-of-year amounts only.

		(A) Beginning of year		(B) End of year		
ASSETS	45 Cash – non-interest-bearing		1,000.	45	1,000.	
	46 Savings and temporary cash investments		9,277,435.	46	3,573,860.	
	47a Accounts receivable	47a	81,769.			
	b Less. allowance for doubtful accounts	47b		146,876.	47c	81,769.
	48a Pledges receivable	48a	716,801.			
	b Less. allowance for doubtful accounts	48b		1,378,781.	48c	716,801.
	49 Grants receivable				49	
	50 Receivables from officers, directors, trustees, and key employees (attach schedule)				50	
	51a Other notes & loans receivable (attach sch)	51a	12,649,756.			
	b Less. allowance for doubtful accounts	51b	Stmts 19 & 23	722,056.	51c	12,649,756.
	52 Inventories for sale or use				52	
	53 Prepaid expenses and deferred charges			22,673.	53	68,105.
	54 Investments – securities (attach schedule) Stmts 20 & 24 Cost <input type="checkbox"/> FMV <input checked="" type="checkbox"/>			138,020,293.	54	141,429,092.
	55a Investments – land, buildings, & equipment. basis	55a				
b Less accumulated depreciation (attach schedule)	55b			55c		
56 Investments – other (attach schedule) Stmts 21 & 25			893,382.	56	2,728,009.	
57a Land, buildings, and equipment. basis	57a	2,461,766.				
b Less accumulated depreciation (attach schedule) Statement 5	57b	722,297.	1,811,072.	57c	1,739,469.	
58 Other assets (describe ▶ See Statement 6)			605,572.	58	571,144.	
59 Total assets (must equal line 74). Add lines 45 through 58			152,879,140.	59	163,559,005.	
LIABILITIES	60 Accounts payable and accrued expenses		563,324.	60	891,144.	
	61 Grants payable		7,160,659.	61	14,003,589.	
	62 Deferred revenue			62		
	63 Loans from officers, directors, trustees, and key employees (attach schedule)			63		
	64a Tax-exempt bond liabilities (attach schedule)				64a	
	b Mortgages and other notes payable (attach schedule) Stmts 22 & 26			250,000.	64b	11,050,000.
	65 Other liabilities (describe ▶ See Statement 7)			605,572.	65	571,144.
66 Total liabilities. Add lines 60 through 65			8,579,555.	66	26,515,877.	
NET ASSETS OR FUND BALANCES	Organizations that follow SFAS 117, check here ▶ <input checked="" type="checkbox"/> and complete lines 67 through 69 and lines 73 and 74.					
	67 Unrestricted		135,991,332.	67	134,216,350.	
	68 Temporarily restricted		8,308,253.	68	2,826,778.	
	69 Permanently restricted			69		
	Organizations that do not follow SFAS 117, check here ▶ <input type="checkbox"/> and complete lines 70 through 74.					
	70 Capital stock, trust principal, or current funds			70		
	71 Paid-in or capital surplus, or land, building, and equipment fund			71		
	72 Retained earnings, endowment, accumulated income, or other funds			72		
	73 Total net assets or fund balances (add lines 67 through 69 or lines 70 through 72, column (A) must equal line 19; column (B) must equal line 21)			144,299,585.	73	137,043,128.
	74 Total liabilities and net assets/fund balances. Add lines 66 and 73			152,879,140.	74	163,559,005.

BAA

Part IV-A Reconciliation of Revenue per Audited Financial Statements with Revenue per Return (See instructions.)

a	Total revenue, gains, and other support per audited financial statements		a	87,077,453.
b	Amounts included on line a but not on Part I, line 12.			
	1 Net unrealized gains on investments	b1		-3,860,982.
	2 Donated services and use of facilities	b2		
	3 Recoveries of prior year grants	b3		
	4 Other (specify) _____ See Stmt 8	b4		768,408.
	Add lines b1 through b4		b	-3,092,574.
c	Subtract line b from line a		c	90,170,027.
d	Amounts included on Part I, line 12, but not on line a:			
	1 Investment expenses not included on Part I, line 6b	d1		
	2 Other (specify) _____	d2		
	Add lines d1 and d2		d	
e	Total revenue (Part I, line 12). Add lines c and d		e	90,170,027.

Part IV-B Reconciliation of Expenses per Audited Financial Statements with Expenses per Return

a	Total expenses and losses per audited financial statements		a	93,989,515.
b	Amounts included on line a but not on Part I, line 17.			
	1 Donated services and use of facilities	b1		
	2 Prior year adjustments reported on Part I, line 20	b2		
	3 Losses reported on Part I, line 20	b3		
	4 Other (specify) _____ See Stmt 9	b4		378,938.
	Add lines b1 through b4		b	378,938.
c	Subtract line b from line a		c	93,610,577.
d	Amounts included on Part I, line 17, but not on line a:			
	1 Investment expenses not included on Part I, line 6b	d1		
	2 Other (specify) _____	d2		
	Add lines d1 and d2		d	
e	Total expenses (Part I, line 17). Add lines c and d		e	93,610,577.

Part V-A Current Officers, Directors, Trustees, and Key Employees (List each person who was an officer, director, trustee, or key employee at any time during the year even if they were not compensated.) (See the instructions.)

(A) Name and address	(B) Title and average hours per week devoted to position	(C) Compensation (if not paid, enter -0-)	(D) Contributions to employee benefit plans and deferred compensation plans	(E) Expense account and other allowances
See Statement 10		285,613.	30,646.	0.

Part VI Other Information (continued)

		Yes	No
82 a	Did the organization receive donated services or the use of materials, equipment, or facilities at no charge or at substantially less than fair rental value?	X	
82 b	If 'Yes,' you may indicate the value of these items here. Do not include this amount as revenue in Part I or as an expense in Part II (See instructions in Part III.)	Not Valued	
83 a	Did the organization comply with the public inspection requirements for returns and exemption applications?	X	
83 b	Did the organization comply with the disclosure requirements relating to quid pro quo contributions?	X	
84 a	Did the organization solicit any contributions or gifts that were not tax deductible?		X
84 b	If 'Yes,' did the organization include with every solicitation an express statement that such contributions or gifts were not tax deductible?		N/A
85	501(c)(4), (5), or (6) organizations. a Were substantially all dues nondeductible by members?		N/A
85 b	Did the organization make only in-house lobbying expenditures of \$2,000 or less?		N/A
If 'Yes' was answered to either 85a or 85b, do not complete 85c through 85h below unless the organization received a waiver for proxy tax owed for the prior year.			
85 c	Dues, assessments, and similar amounts from members		N/A
85 d	Section 162(e) lobbying and political expenditures		N/A
85 e	Aggregate nondeductible amount of section 6033(e)(1)(A) dues notices		N/A
85 f	Taxable amount of lobbying and political expenditures (line 85d less 85e)		N/A
85 g	Does the organization elect to pay the section 6033(e) tax on the amount on line 85f?		N/A
85 h	If section 6033(e)(1)(A) dues notices were sent, does the organization agree to add the amount on line 85f to its reasonable estimate of dues allocable to nondeductible lobbying and political expenditures for the following tax year?		N/A
86	501(c)(7) organizations. Enter: a Initiation fees and capital contributions included on line 12		N/A
86 b	Gross receipts, included on line 12, for public use of club facilities		N/A
87	501(c)(12) organizations. Enter: a Gross income from members or shareholders		N/A
87 b	Gross income from other sources (Do not net amounts due or paid to other sources against amounts due or received from them)		N/A
88	At any time during the year, did the organization own a 50% or greater interest in a taxable corporation or partnership, or an entity disregarded as separate from the organization under Regulations sections 301.7701-2 and 301.7701-3? If 'Yes,' complete Part IX	X	
89 a	501(c)(3) organizations. Enter. Amount of tax imposed on the organization during the year under: section 4911 ▶ 0, section 4912 ▶ 0, section 4955 ▶ 0.		
89 b	501(c)(3) and 501(c)(4) organizations. Did the organization engage in any section 4958 excess benefit transaction during the year or did it become aware of an excess benefit transaction from a prior year? If 'Yes,' attach a statement explaining each transaction		X
c	Enter. Amount of tax imposed on the organization managers or disqualified persons during the year under sections 4912, 4955, and 4958		0.
d	Enter. Amount of tax on line 89c, above, reimbursed by the organization		0.
90 a	List the states with which a copy of this return is filed ▶ See Statement 18		
90 b	Number of employees employed in the pay period that includes March 12, 2005 (See instructions.)		34
91 a	The books are in care of ▶ Drummond Pike Telephone number ▶ (415) 561-6400 Located at ▶ PO Box 29903, San Francisco, CA, ZIP + 4 ▶ 94129-0903		
91 b	At any time during the calendar year, did the organization have an interest in or a signature or other authority over a financial account in a foreign country (such as a bank account, securities account, or other financial account)? If 'Yes,' enter the name of the foreign country ▶		X
See the instructions for exceptions and filing requirements for Form TD F 90-22.1, Report of Foreign Bank and Financial Statements			
91 c	At any time during the calendar year, did the organization maintain an office outside of the United States? If 'Yes,' enter the name of the foreign country ▶		X
92	Section 4947(a)(1) nonexempt charitable trusts filing Form 990 in lieu of Form 1041 - Check here and enter the amount of tax-exempt interest received or accrued during the tax year ▶ 92	N/A	<input type="checkbox"/>

Part VII Analysis of Income-Producing Activities (See the instructions)

Note: Enter gross amounts unless otherwise indicated

- 93 Program service revenue.
 - a Program Fees Revenue
 - b _____
 - c _____
 - d _____
 - e _____
 - f Medicare/Medicaid payments
 - g Fees & contracts from government agencies
- 94 Membership dues and assessments
- 95 Interest on savings & temporary cash invmnts
- 96 Dividends & interest from securities
- 97 Net rental income or (loss) from real estate:
 - a debt-financed property
 - b not debt-financed property
- 98 Net rental income or (loss) from pers prop
- 99 Other investment income
- 100 Gain or (loss) from sales of assets other than inventory
- 101 Net income or (loss) from special events
- 102 Gross profit or (loss) from sales of inventory
- 103 Other revenue. a
 - b See Statement 14
 - c _____
 - d _____
 - e _____
- 104 Subtotal (add columns (B), (D), and (E))
- 105 Total (add line 104, columns (B), (D), and (E))

	Unrelated business income		Excluded by section 512, 513, or 514		(E) Related or exempt function income
	(A) Business code	(B) Amount	(C) Exclusion code	(D) Amount	
					685,208.
			14	56,612.	
			14	4,370,432.	
			18	3,708,838.	
				14,043.	290,588.
				8,149,925.	975,796.
					9,125,721.

Note: Line 105 plus line 1d, Part I, should equal the amount on line 12, Part I

Part VIII Relationship of Activities to the Accomplishment of Exempt Purposes (See the instructions)

Line No.	Explain how each activity for which income is reported in column (E) of Part VII contributed importantly to the accomplishment of the organization's exempt purposes (other than by providing funds for such purposes)
	See Statement 15

Part IX Information Regarding Taxable Subsidiaries and Disregarded Entities (See the instructions)

(A) Name, address, and EIN of corporation, partnership, or disregarded entity	(B) Percentage of ownership interest	(C) Nature of activities	(D) Total income	(E) End-of-year assets
Highwater, Inc. P.O. Box 29903 San Francisco, CA 94129 94-3214043	100.000 %	Real Estate Dvlpt	49,896.	5,874.

Part X Information Regarding Transfers Associated with Personal Benefit Contracts (See the instructions.)

- a Did the organization, during the year, receive any funds, directly or indirectly, to pay premiums on a personal benefit contract? Yes No
 - b Did the organization, during the year, pay premiums, directly or indirectly, on a personal benefit contract? Yes No
- Note: If 'Yes' to (b), file Form 8870 and Form 4720 (see instructions).

Please Sign Here

Under penalties of perjury, I declare that I have examined this return, including accompanying schedules and statements, and to the best of my knowledge and belief, it is true, correct, and complete. Declaration of preparer (other than officer) is based on all information of which preparer has any knowledge.

Signature of officer: Drummond Pike, CEO Date: 28 June '06

Paid Preparer's Use Only

Preparer's signature: Carol Duffield Date: 6/27/06 Check if self-employed: Preparer's SSN or PTIN (See General Instruction W): 550-66-3077

Firm's name (or yours if self-employed), address, and ZIP + 4: Fontanello, Duffield & Otake, LLP
44 Montgomery Street, Suite 2019
San Francisco, CA 94104 EIN: 37-1420474
 Phone no: (415) 983-0200

SCHEDULE A
(Form 990 or 990-EZ)

Department of the Treasury
Internal Revenue Service

**Organization Exempt Under
Section 501(c)(3)**

**(Except Private Foundation) and Section 501(e), 501(f), 501(k),
501(n), or 4947(a)(1) Nonexempt Charitable Trust**

Supplementary Information — (See separate instructions.)

▶ MUST be completed by the above organizations and attached to their Form 990 or 990-EZ.

OMB No 1545-0047

2005

Name of the organization

Tides Foundation

Employer identification number

51-0198509

Part I Compensation of the Five Highest Paid Employees Other Than Officers, Directors, and Trustees
(See instructions. List each one. If there are none, enter 'None'.)

(a) Name and address of each employee paid more than \$50,000	(b) Title and average hours per week devoted to position	(c) Compensation	(d) Contributions to employee benefit plans and deferred compensation	(e) Expense account and other allowances
See Statement 16		557,496.	58,335.	0.
Total number of other employees paid over \$50,000	▶ 14			

Part II - A Compensation of the Five Highest Paid Independent Contractors for Professional Services
(See instructions. List each one (whether individuals or firms). If there are none, enter 'None'.)

(a) Name and address of each independent contractor paid more than \$50,000	(b) Type of service	(c) Compensation
Boston Trust & Investment Management Co One Beacon Street, Boston, MA 02108	Investment Mgmt	402,431.
The William and Flora Hewlett Foundation 2121 Sand Hill Road, Menlo Park, CA 94025	Program Advisor	102,288.
PriceWaterhouseCoopers LLP P.O. Box 31001-0068 Pasadena, CA 91110-0068	Foundation Audit	84,673.
Lara L. Bergthold 100 N Crescent Dr, Ste 113, Beverly Hills, CA 90210	Program Advisor	74,750.
Moises Agosto c/o Tides NY, 55 Exchange Pl, NY, NY 10005	Program Advisor	73,860.
Total number of others receiving over \$50,000 for professional services	▶ 3	

Part II - B Compensation of the Five Highest Paid Independent Contractors for Other Services
(List each contractor who performed services other than professional services, whether individuals or firms. If there are none, enter 'None' See instructions.)

(a) Name and address of each independent contractor paid more than \$50,000	(b) Type of service	(c) Compensation
None		
Total number of other contractors receiving over \$50,000 for other services	▶ 0	

Part III Statements About Activities (See instructions.)

	Yes	No
<p>1 During the year, has the organization attempted to influence national, state, or local legislation, including any attempt to influence public opinion on a legislative matter or referendum? If 'Yes,' enter the total expenses paid or incurred in connection with the lobbying activities ▶ \$ <u>720,081.</u></p> <p>(Must equal amounts on line 38, Part VI-A, or line i of Part VI-B)</p> <p>Organizations that made an election under section 501(h) by filing Form 5768 must complete Part VI-A. Other organizations checking 'Yes' must complete Part VI-B AND attach a statement giving a detailed description of the lobbying activities.</p>	1	X
<p>2 During the year, has the organization, either directly or indirectly, engaged in any of the following acts with any substantial contributors, trustees, directors, officers, creators, key employees, or members of their families, or with any taxable organization with which any such person is affiliated as an officer, director, trustee, majority owner, or principal beneficiary? (If the answer to any question is 'Yes,' attach a detailed statement explaining the transactions.)</p>		
<p>a Sale, exchange, or leasing of property?</p>	2a	X
<p>b Lending of money or other extension of credit?</p>	2b	X
<p>c Furnishing of goods, services, or facilities?</p>	2c	X
<p>d Payment of compensation (or payment or reimbursement of expenses if more than \$1,000)?</p> <p align="center">See Form 990, Part V</p>	2d	X
<p>e Transfer of any part of its income or assets?</p>	2e	X
<p>3a Do you make grants for scholarships, fellowships, student loans, etc? (If 'Yes,' attach an explanation of how you determine that recipients qualify to receive payments.)</p>	3a	X
<p>b Do you have a section 403(b) annuity plan for your employees?</p>	3b	X
<p>c During the year, did the organization receive a contribution of qualified real property interest under section 170(h)?</p>	3c	X
<p>4a Did you maintain any separate account for participating donors where donors have the right to provide advice on the use or distribution of funds?</p>	4a	X
<p>b Do you provide credit counseling, debt management, credit repair, or debt negotiation services?</p>	4b	X

Part IV Reason for Non-Private Foundation Status (See instructions.)

The organization is not a private foundation because it is. (Please check only **ONE** applicable box.)

- 5 A church, convention of churches, or association of churches. Section 170(b)(1)(A)(i).
- 6 A school. Section 170(b)(1)(A)(ii). (Also complete Part V.)
- 7 A hospital or a cooperative hospital service organization. Section 170(b)(1)(A)(iii).
- 8 A Federal, state, or local government or governmental unit. Section 170(b)(1)(A)(v).
- 9 A medical research organization operated in conjunction with a hospital. Section 170(b)(1)(A)(iii). Enter the hospital's name, city, and state ▶ _____
- 10 An organization operated for the benefit of a college or university owned or operated by a governmental unit. Section 170(b)(1)(A)(v). (Also complete the **Support Schedule** in Part IV-A.)
- 11a An organization that normally receives a substantial part of its support from a governmental unit or from the general public. Section 170(b)(1)(A)(vi). (Also complete the **Support Schedule** in Part IV-A.)
- 11b A community trust. Section 170(b)(1)(A)(vi). (Also complete the **Support Schedule** in Part IV-A.)
- 12 An organization that normally receives (1) more than 33-1/3% of its support from contributions, membership fees, and gross receipts from activities related to its charitable, etc, functions — subject to certain exceptions, and (2) no more than 33-1/3% of its support from gross investment income and unrelated business taxable income (less section 511 tax) from businesses acquired by the organization after June 30, 1975. See section 509(a)(2). (Also complete the **Support Schedule** in Part IV-A.)
- 13 An organization that is not controlled by any disqualified persons (other than foundation managers) and supports organizations described in: (1) lines 5 through 12 above, or (2) section 501(c)(4), (5), or (6), if they meet the test of section 509(a)(2). Check the box that describes the type of supporting organization: Type 1 Type 2 Type 3

Provide the following information about the supported organizations. (See instructions.)

(a) Name(s) of supported organization(s)	(b) Line number from above

- 14 An organization organized and operated to test for public safety. Section 509(a)(4). (See instructions.)

Part IV-A Support Schedule (Complete only if you checked a box on line 10, 11, or 12.) *Use cash method of accounting.*

Note: You may use the worksheet in the instructions for converting from the accrual to the cash method of accounting

Calendar year (or fiscal year beginning in)	(a) 2004	(b) 2003	(c) 2002	(d) 2001	(e) Total
15 Gifts, grants, and contributions received. (Do not include unusual grants. See line 28.)	72,662,625.	52,229,972.	60,656,234.	78,105,646.	263,654,477.
16 Membership fees received					0.
17 Gross receipts from admissions, merchandise sold or services performed, or furnishing of facilities in any activity that is related to the organization's charitable, etc, purpose	741,553.	225,907.	622,921.	517,685.	2,108,066.
18 Gross income from interest, dividends, amounts received from payments on securities loans (section 512(a)(5)), rents, royalties, and unrelated business taxable income (less section 511 taxes) from businesses acquired by the organization after June 30, 1975	3,418,465.	3,215,067.	3,382,999.	5,384,141.	15,400,672.
19 Net income from unrelated business activities not included in line 18		67,646.	22,911.	30,689.	121,246.
20 Tax revenues levied for the organization's benefit and either paid to it or expended on its behalf					0.
21 The value of services or facilities furnished to the organization by a governmental unit without charge. Do not include the value of services or facilities generally furnished to the public without charge					0.
22 Other income. Attach a schedule. Do not include gain or (loss) from sale of capital assets					0.
23 Total of lines 15 through 22	76,822,643.	55,738,592.	64,685,065.	84,038,161.	281,284,461.
24 Line 23 minus line 17	76,081,090.	55,512,685.	64,062,144.	83,520,476.	279,176,395.
25 Enter 1% of line 23	768,226.	557,386.	646,851.	840,382.	
26 Organizations described on lines 10 or 11:					
a Enter 2% of amount in column (e), line 24					26a 5,583,528.
b Prepare a list for your records to show the name of and amount contributed by each person (other than a governmental unit or publicly supported organization) whose total gifts for 2001 through 2004 exceeded the amount shown in line 26a. Do not file this list with your return. Enter the total of all these excess amounts					26b 43,830,890.
c Total support for section 509(a)(1) test. Enter line 24, column (e)					26c 279,176,395.
d Add: Amounts from column (e) for lines:	18	15,400,672.	19	121,246.	
	22		26b	43,830,890.	26d 59,352,808.
e Public support (line 26c minus line 26d total)					26e 219,823,587.
f Public support percentage (line 26e (numerator) divided by line 26c (denominator))					26f 78.74 %
27 Organizations described on line 12: N/A					
a For amounts included in lines 15, 16, and 17 that were received from a 'disqualified person,' prepare a list for your records to show the name of, and total amounts received in each year from, each 'disqualified person.' Do not file this list with your return. Enter the sum of such amounts for each year.					
(2004) _____ (2003) _____ (2002) _____ (2001) _____					
b For any amount included in line 17 that was received from each person (other than 'disqualified persons'), prepare a list for your records to show the name of, and amount received for each year, that was more than the larger of (1) the amount on line 25 for the year or (2) \$5,000. (Include in the list organizations described in lines 5 through 11b, as well as individuals.) Do not file this list with your return. After computing the difference between the amount received and the larger amount described in (1) or (2), enter the sum of these differences (the excess amounts) for each year.					
(2004) _____ (2003) _____ (2002) _____ (2001) _____					
c Add: Amounts from column (e) for lines:	15		16		
	17		20		
				21	
d Add: Line 27a total _____ and line 27b total _____					27c _____
e Public support (line 27c total minus line 27d total)					27d _____
f Total support for section 509(a)(2) test: Enter amount from line 23, column (e) ...					27e _____
g Public support percentage (line 27e (numerator) divided by line 27f (denominator))					27f _____
h Investment income percentage (line 18, column (e) (numerator) divided by line 27f (denominator))					27g _____ %
					27h _____ %
28 Unusual Grants: For an organization described in line 10, 11, or 12 that received any unusual grants during 2001 through 2004, prepare a list for your records to show, for each year, the name of the contributor, the date and amount of the grant, and a brief description of the nature of the grant. Do not file this list with your return. Do not include these grants in line 15					

Part V Private School Questionnaire (See instructions.)
 (To be completed ONLY by schools that checked the box on line 6 in Part IV)

		N/A	
		Yes	No
29	Does the organization have a racially nondiscriminatory policy toward students by statement in its charter, bylaws, other governing instrument, or in a resolution of its governing body?		
30	Does the organization include a statement of its racially nondiscriminatory policy toward students in all its brochures, catalogues, and other written communications with the public dealing with student admissions, programs, and scholarships?		
31	Has the organization publicized its racially nondiscriminatory policy through newspaper or broadcast media during the period of solicitation for students, or during the registration period if it has no solicitation program, in a way that makes the policy known to all parts of the general community it serves? If 'Yes,' please describe, if 'No,' please explain. (If you need more space, attach a separate statement.) ----- ----- -----		
32	Does the organization maintain the following.		
a	Records indicating the racial composition of the student body, faculty, and administrative staff?		
b	Records documenting that scholarships and other financial assistance are awarded on a racially nondiscriminatory basis?		
c	Copies of all catalogues, brochures, announcements, and other written communications to the public dealing with student admissions, programs, and scholarships?		
d	Copies of all material used by the organization or on its behalf to solicit contributions? If you answered 'No' to any of the above, please explain (If you need more space, attach a separate statement.) ----- -----		
33	Does the organization discriminate by race in any way with respect to:		
a	Students' rights or privileges?		
b	Admissions policies?		
c	Employment of faculty or administrative staff?		
d	Scholarships or other financial assistance?		
e	Educational policies?		
f	Use of facilities?		
g	Athletic programs?		
h	Other extracurricular activities? If you answered 'Yes' to any of the above, please explain. (If you need more space, attach a separate statement.) ----- ----- -----		
34a	Does the organization receive any financial aid or assistance from a governmental agency?		
b	Has the organization's right to such aid ever been revoked or suspended? If you answered 'Yes' to either 34a or b, please explain using an attached statement.		
35	Does the organization certify that it has complied with the applicable requirements of sections 4.01 through 4.05 of Rev Proc 75-50, 1975-2 C.B. 587, covering racial nondiscrimination? If 'No,' attach an explanation.		

Part VI-A Lobbying Expenditures by Electing Public Charities (See instructions.)
(To be completed **ONLY** by an eligible organization that filed Form 5768)

Check **a** if the organization belongs to an affiliated group. Check **b** if you checked 'a' and 'limited control' provisions apply.

Limits on Lobbying Expenditures		(a) Affiliated group totals	(b) To be completed for ALL electing organizations
(The term 'expenditures' means amounts paid or incurred.)			
36 Total lobbying expenditures to influence public opinion (grassroots lobbying)	36		217,711.
37 Total lobbying expenditures to influence a legislative body (direct lobbying)	37		502,370.
38 Total lobbying expenditures (add lines 36 and 37)	38	0.	720,081.
39 Other exempt purpose expenditures	39		92,890,496.
40 Total exempt purpose expenditures (add lines 38 and 39)	40	0.	93,610,577.
41 Lobbying nontaxable amount Enter the amount from the following table --			
If the amount on line 40 is --	The lobbying nontaxable amount is --		
Not over \$500,000	20% of the amount on line 40		
Over \$500,000 but not over \$1,000,000	\$100,000 plus 15% of the excess over \$500,000		
Over \$1,000,000 but not over \$1,500,000	\$175,000 plus 10% of the excess over \$1,000,000	41	1,000,000.
Over \$1,500,000 but not over \$17,000,000	\$225,000 plus 5% of the excess over \$1,500,000		
Over \$17,000,000	\$1,000,000		
42 Grassroots nontaxable amount (enter 25% of line 41)	42	0.	250,000.
43 Subtract line 42 from line 36. Enter -0- if line 42 is more than line 36	43	0.	0.
44 Subtract line 41 from line 38. Enter -0- if line 41 is more than line 38	44	0.	0.

Caution: If there is an amount on either line 43 or line 44, you must file Form 4720.

4-Year Averaging Period Under Section 501(h)

(Some organizations that made a section 501(h) election do not have to complete all of the five columns below.
See the instructions for lines 45 through 50.)

Calendar year (or fiscal year beginning in) ▶	Lobbying Expenditures During 4-Year Averaging Period				
	(a) 2005	(b) 2004	(c) 2003	(d) 2002	(e) Total
45 Lobbying nontaxable amount	1,000,000.	1,000,000.	1,000,000.	1,000,000.	4,000,000.
46 Lobbying ceiling amount (150% of line 45(e))					6,000,000.
47 Total lobbying expenditures	720,081.	861,216.	721,362.	491,613.	2,794,272.
48 Grassroots nontaxable amount	250,000.	250,000.	250,000.	250,000.	1,000,000.
49 Grassroots ceiling amount (150% of line 48(e))					1,500,000.
50 Grassroots lobbying expenditures	217,711.	246,254.	249,749.	227,113.	940,827.

Part VI-B Lobbying Activity by Nonelecting Public Charities

(For reporting only by organizations that did not complete Part VI-A) (See instructions.)

N/A

During the year, did the organization attempt to influence national, state or local legislation, including any attempt to influence public opinion on a legislative matter or referendum, through the use of:

- a** Volunteers
- b** Paid staff or management (Include compensation in expenses reported on lines c through h.)
- c** Media advertisements
- d** Mailings to members, legislators, or the public
- e** Publications, or published or broadcast statements
- f** Grants to other organizations for lobbying purposes
- g** Direct contact with legislators, their staffs, government officials, or a legislative body
- h** Rallies, demonstrations, seminars, conventions, speeches, lectures, or any other means
- i** Total lobbying expenditures (add lines c through h.)

Yes	No	Amount

If 'Yes' to any of the above, also attach a statement giving a detailed description of the lobbying activities.

2005

Federal Statements

Tides Foundation

51-0198509

Statement 1
Form 990, Part I, Line 8
Net Gain (Loss) from Noninventory Sales

Publicly Traded Securities

Gross Sales Price: 157,397,476.
 Cost or Other Basis: 153,686,711.

Total Gain (Loss) Publicly Traded Securities \$ 3,710,765.

Other Assets

Description: Loss on Disposal of Equipment
 Date Acquired: Various
 How Acquired: Purchase
 Date Sold: Various
 To Whom Sold:
 Gross Sales Price: 225.
 Cost or Other Basis: 2,152.

Gain (Loss) -1,927.

Total Gain (Loss) Other Assets \$ -1,927.

Total Net Gain (Loss) From Noninventory Sales \$ 3,708,838.

Statement 2
Form 990, Part I, Line 20
Other Changes in Net Assets or Fund Balances

FMV Adj of Investments \$ -3,860,982.
 Net Income from Controlled Subsidiary 45,075.
 Total \$ -3,815,907.

Statement 3
Form 990, Part II, Line 22
Grants and Allocations

Cash Grants and Allocations

Class of Activity: Charitable
 Donee's Name: Statement Attached
 Donee's Address: c/o PO Box 29903
 San Francisco, CA 94129
 Relationship of Donee: N/A
 Amount Given: \$ 85,941,477.

Total Grants and Allocations \$ 85,941,477.

Tides Foundation
 Grants Awarded
 January 1, 2005 - December 31, 2005

Organization	\$
20/20 Vision Education Fund	300
651 ARTS	10,000
69 Parallel	7,500
826 Valencia / 826 Seattle	250
911 Media Arts Center	4,000
A Better Way Foundation	20,000
A Home Away from Homelessness	20,000
A Home Within	10,000
A SEED Europe	6,500
A Traveling Jewish Theater	3,600
A.J. Muste Memorial Institute	50,000
A.J. Muste Memorial Institute / School of the Americas Watch	1,000
A. J. Muste Memorial Institute / Syracuse Peace Council	1,000
Aanchal	1,600
Abraham Fund	22,540
Access Works	40,000
ACCSI - Accion Ciudadana Contra el SIDA	15,176
ACLU of New Jersey Foundation	20,000
ACORN institute	21,875
Acorn International	5,000
Acterra	10,000
Action for Children	5,000
Action on Disability and Development	53,672
ActionAid International USA	64,000
Adbusters Media Foundation	12,019
Adolescent Consultation Services, Inc	5,000
Advocates for Womyn's Action, Rights and Empowerment - Samar	5,000
Affordable Housing Associates	500
Afghan Women's Educational Center	2,721
Africa Action	22,000
African Services Committee, Inc	300
African Women's Development Fund	150,000
Agape Foundation / Heart and Hand Fund	1,000
Agape Foundation / International Human Rights Initiative	1,000
Agape Foundation / Religious Witness with Homeless People	1,000
Agape Foundation / The People's Grocery	3,500
Aid For AIDS	1,000
AIDS Action Committee of Massachusetts	100,000
AIDS Foundation of Chicago	100,000
AIDS Program	10,000
AIDS Project of Southern Vermont	2,423
AIDS Research Center of Chinese Academy of Medical Sciences	2,000
AIDS Resource Center of Wisconsin	17,929
AIDS Walk San Francisco	250
Airline Ambassadors International	10,000
Alabama Coalition on Black Civic Participation	54,375
Alameda County Community Food Bank	1,500
Albuquerque Health Care for the Homeless	58,500
Aideas Infantiles SOS de Ninos	5,000
ALEPH - Alliance for Jewish Renewal	2,008
Algebra Project	78,535
All India Movement Aim for Seva	1,350
All Seasons Chalice Church	18,540
All Ukrainian Network of PLWHA Nikolaev Regional Department	8,419
Alliance for Justice	2,000
Alliance for Justice Action Campaign	60,000
Alliance for Rural Community Health	50,000
Alliance for Sustainable Colorado	1,000
Alliance Medical Center	50,000
Allied Arts Foundation	1,000
Allied Jewish Federation of Colorado	1,080
ALSO for Gay Youth	5,000
Ama Foundation	35,000
AMAZONAS Images	75,000
AMD&ART	3,000
American Associates Ben-Gurion University of the Negev	1,000
American Cancer Society	10,000
American Cancer Society California Division Inc.	100
American Cancer Society Puget Sound Metro Market Division	2,926
American Civil Liberties Union of Tennessee	24,505
American Civil Liberties Union Florida	50,000
American Civil Liberties Union Foundation	189,950
American Civil Liberties Union Foundation of Northern California	3,000
American Civil Liberties Union Foundation of Texas	100,000
American Civil Liberties Union of Arizona Foundation	5,000
American Civil Liberties Union of Florida	177,202
American Civil Liberties Union of Florida / Brothers of the Same Mind	17,912
American Civil Liberties Union of Florida / Eleventh Episcopal District Lay Organization of the AME Church	24,896
American Civil Liberties Union of Mississippi	33,956
American Civil Liberties Union of Montana	2,800
American Civil Liberties Union of Texas	54,625
American Committee for the Weizmann Institute of Science	2,500
American Constitution Society for Law and Policy	20,000
American Documentary, Inc.	10,000
American Foundation for AIDS Research	100,000
American Friends of Bayit Chadash	10,004

American Friends of Old City Charities	3,600
American Friends of the Israel Democracy Institute	5,000
American Friends Service Committee	58,534
American Friends Service Committee / National Network Opposing Militarization of Youth	10,000
American Heart Association	100
American Himalayan Foundation	28,000
American Immigration Law Forum	16,423
American Indian Institute	6,000
American Institute for Social Justice	60,000
American Institute for Social Justice / ACORN Living Wage Resource Center	45,000
American Institute for Social Justice / Arizona ACORN	25,000
American Institute for Social Justice / Florida ACORN	30,000
American Institute for Social Justice / Miami ACORN	20,000
American Institute for Social Justice / New Mexico ACORN	25,000
American Institute for Social Justice / Pulaski County ACORN	20,000
American Jewish Committee	5,000
American Jewish Congress	500
American Jewish World Service	20,200
American Lands Alliance	10,000
American Progress Action Fund	40,000
American Refugee Committee International	50,000
American Rivers	29,424
American Society for Technion	500
American Society for the Prevention of Cruelty to Animals	1,800
Americans For Informed Democracy	40,000
Americans for Peace Now	24,418
Americans United for Separation of Church and State	250
America's Charities	5,000
America's Second Harvest	35,240
Amnesty International Chile / Comunidad Mapuche Juan Pallalef	4,500
Amnesty International USA	54,088
Amonsoquath Tribe of Cherokee	5,000
Ancient Forest International	5,000
Andean Information Network	17,000
Anderson Valley Health Center	325,000
Andhra Pradesh Griyana Sevak Sangh	2,500
Andre Salvage Foundation	2,500
Andrew Glover Youth Program	5,000
AnewAmerica Community Corporation	15,000
Animal Legal Defense Fund	1,800
Aniz, Inc	17,500
Antioch University	1,500
Appalachian Community Fund	15,000
Applied Research Center	35,000
Applied Research Center / Reentry Solutions	10,000
Arawaka, Inc	2,160
Arctic Indigenous Youth Alliance	5,000
Argentina Harm Reduction Association	17,000
Arizona Community Foundation	6,000
Arizona Friends of Tibet	1,500
Arizona State University Foundation	5,000
Arkansas Institute for Social Justice	198,125
Armenian National AIDS Fund	9,795
Arms Control Association	306,907
Arroyo Vista Family Health Foundation	50,000
Ars Publica	10,000
Art in General	50,000
Art Omi	5,000
Art Resources Transfer	5,000
Art, Research and Curriculum Associates / Youth Sounds	30,000
Artists Space	50,000
ASEER Foundation	2,999
Ashoka	48,891
Asia Pacific Forum on Women, Law and Development	5,000
Asia Society	10,000
Asian Americans for Community Involvement	45,000
Asian Americans/Pacific Islanders in Philanthropy	1,000
Asian Health Services	50,000
Asian Neighborhood Design	40,000
Asian Pacific Health Care Venture	50,000
Asian Pacific Islander Legal Outreach	3,188
Asian Pacific Network of People Living with HIV/AIDS	29,500
Asian Pacific Network of People Living with HIV/AIDS / Poz Home Centre	10,000
Asian Perinatal Advocates	3,188
Asian Women's Shelter	3,188
Asian Women's Shelter / Center for Special Problems	3,188
Asociacion Civil Lazos de Vida	14,565
Asociacion Civil M A N U.	6,640
Asociacion Civil Tashigar Norte	1,000
Asociacion de Familiares de Detenidos Desaparecidos	5,000
Asociacion Interamericana para la Defensa del Ambiente	20,000
Asociacion Lihuen-Antu	5,000
Asociacion Luchemos Por La Vida	6,250
Asociación Minga Peru	85,000
Asociacion Nacional de Mujeres Campesinas, Negras e Indigenas de Colomb	5,000
Asociacion Nacional Estudios de Mujeres	3,500
Asociacion Pro-Ninos Quemados de Nicaragua	10,000
Associaçao Brasileira de Organizações Não Governamentais	24,447
Associaçao Hihlullie	9,989
Associaçao Para a Reducao De Pobreza Absoluta	9,960
Associaçao Yolaka	10,000
Asociacion Amigos del Aprendizaje	20,000

Association Citoyenne Active de Lutte Contre les Pollutions	6,500
Association de Défense de l'Environnement de Bormes et du Lavandou	6,200
Association de Defense du Rizzanese et de son Environnement	4,000
Association de Soutien aux Projets et Projets et Activités Agricoles et Rurale	5,000
Association des Amis de l'Ortie	3,700
Association des Femmes Educatrices du Mall	15,550
Association for Awareness Development and Human Rights	8,127
Association for Support to Development and Population Activities	5,500
Association for the Promotion of Sustainable Community Development	34,882
Association Gabas Nature Patrimoine	7,000
Association Interdepartementale et Intercommunale Pour la Protection	8,000
Association Kokopelli	7,000
Association Nationale pour la Protection	6,000
Association of Enneagram Teachers	10,000
Association of India Trade Union	30,000
Association of War Affected Women	30,000
Association Pailions Environnement	3,250
Astrea Lesbian Foundation for Justice	25,000
Astrea Media, Inc.	10,000
Atlanta Harm Reduction Coalition	53,500
Attitudinal Healing Connection	1,750
Aurora Theatre Company	500
Australian Federation of AIDS Organisations	43,348
Avodah. The Jewish Service Corps	5,000
Axis Community Health	50,000
AXIS Dance Company	10,500
Babson College	5,000
Bainbridge Graduate Institute	500
Ballot Initiative Strategy Center	25,000
Bandhu Social Welfare Society	11,000
Bandhu Social Welfare Society / Ashar Alo Society	15,000
Bandhu Social Welfare Society / Mukto Akash Bangladesh	9,992
Bank Information Center	42,500
Baruch College	5,000
Bat Conservation Ireland	3,300
Bat Shalom-The Jerusalem Women's Action Center	5,000
Bay Area Center for Independent Culture	1,000
Bay Area Circus Center	250
Bay Area Coalition for Equitable Schools	33,333
Bay Area Legal Aid	3,188
Bay Area Outreach and Recreation Program	15,000
Bay Area Video Coalition	5,000
Bay Area Women Against Rape	2,000
Bay St. Lawrence Community Center	5,000
Bay View Elementary School	1,500
Bayou La Batre Rural Health Clinic	10,000
Bayview Hunter's Point Foundation for Community Improvement	20,000
Bayview Hunter's Point YMCA	50,000
Be Active Be Emancipated	5,000
Be Present	6,000
Behold the Lamb of God Ministries / The Ordinary People Society	50,000
Beijing Loving Source Information Consultation Center	9,900
Benedictine Fathers of the Priory	1,000
Bentley School	5,000
Bergwaldprojekt e.V	5,000
Berkeley Community Fund	2,000
Berkeley Food and Housing Project	750
Berkeley Repertory Theatre	24,200
Berkeley Richmond Jewish Community Center	2,000
Berkshire Health Systems	250
Berwick Research Institute	200
Bharosa / Network of Indian People with Alternate Sexualities Living with HIV/AIDS	11,720
BIBIJA Rroma Women's Center	4,930
Bibliothèque d'Echange de Documentation et d'Experiences	2,500
Big Dance Theater	20,000
Big Island Group	1,000
Bike Out	1,000
Biosphere Foundation	10,000
Birth Roots	2,000
Bisexual Resource Center / Rainbow Community Center	2,000
Blackfæt Community College	2,500
Blalock Foundation	6,000
Blue Diamond Society	15,000
Bluewater Network	78,289
Boat People SOS, Inc.	6,000
Bonneville Environmental Foundation	1,000
Border Action Network	20,000
Border Network for Human Rights	20,000
BOS USA	10,000
Boulder Community Broadcast Association	50,000
Boulder Jewish Community Foundation	540
Boys and Girls Clubs of King County Rotary Branch	8,000
Brady Campaign to Prevent Handgun Violence	2,000
Brady Center to Prevent Gun Violence	2,000
Brandywine Conservancy	5,000
Brava! for Women in the Arts	7,420
Breakthrough	20,000
Breakthrough Trust	25,000
Breast Cancer Action	250
Breast Cancer Coalition of Rochester	2,500
Brennan Center for Justice	674,150
Bridge	4,000

Bright Futures Group	10,000
Brightstone	2,700
Brooklyn Academy of Music	10,000
Brooklyn Arts Exchange	10,000
Brookside Community Health Center	50,000
Brothers Against Guns	50,000
Business Executives for National Security	10,000
Business Leaders for Sensible Priorities True Majority Campaign	7,500
Butte Environmental Council	3,500
California Alumni Association	2,500
California Center for Community Democracy / North Coast Action	3,000
California Community Foundation	7,500
California Environmental Law Project	35,000
California FarmLink	500
California Poets in the Schools	10,000
California Primary Care Association	250,000
California Rural Indian Health Board	167,016
California Youth Connection	25,000
Calling the Circle Foundation	2,000
Cambodian Land Mine Museum Relief Fund	6,047
Cambridge Historical Society	500
CamFed USA Foundation	25,000
Camp Isabella Freedman	3,000
Campaign for America's Future	27,500
Campaign for Community Change	50,000
Camptonville Community Partnership	3,000
Campus Action	1,000
Canadian Amateur Musicians	13,515
Canadian HIV/AIDS Legal Network	49,707
Canal Alliance	10,000
Capital Link	457,500
Capitol Land Trust	8,000
CARE USA	1,500
CARING for Children	4,000
Caring for People Living with HIV/AIDS	9,800
Cascade Land Conservancy	5,000
Cathe Foundation Pakistan	6,000
Catskill Center for Conservation and Development	10,000
CDD Colombia	5,000
CELLspace	1,500
Center for a New American Dream	25,000
Center for American Progress	530,000
Center for Anti-Violence Education / FIERCE	15,000
Center for Civic Participation	75,400
Center for Community and Corporate Ethics	297,500
Center for Community Change	129,546
Center for Constitutional Rights	22,725
Center for Democratic Renewal and Education	50
Center for Ecoliteracy	150,000
Center for Ecosystem Survival	5,250
Center for Energy Research	2,000
Center for Energy Research / Shundahal Network	5,000
Center for Environmental Health	14,000
Center for Health, Environment and Justice	655,000
Center for Healthy Aging	2,500
Center for Independent Documentary / Toxic Comedy Pictures, LLC	5,000
Center for Independent Living	15,000
Center for International Policy / Win Without War	1,008
Center for Investigative Reporting	2,500
Center for Justice and Accountability	4,000
Center for Law and Justice	2,000
Center for Media and Democracy	180
Center for Mind-Body Medicine	5,000
Center for New Creation / Jubilee USA Network	72,500
Center for Partnership Studies	50,000
Center for Poverty Solutions	21,181
Center for Poverty Solutions / Maryland Justice Coalition	35,000
Center for Public Interest Research / National Student Campaign Against Hunger And Homelessness	9,000
Center for Reproductive Rights	66,587
Center for ReSource Conservation	3,000
Center for Resource Economics	64,500
Center for Sacred Studies	2,000
Center for Spiritual Studies	19,004
Center for Strategic and International Studies	38,250
Center for Teaching Peace, Inc	250
Center for the Art of Translation	50,000
Center for the Arts, Religion, and Education	71,000
Center for the Study of Public Policy / Military Families Speak Out	5,000
Center for the Study of the Americas	500
Center for Third World Organizing	20,000
Center for Tobacco Control Research and Education, UCSF	20,000
Center for Traditional Music and Dance	3,000
Center for Victims of Torture	18,484
Center for Voting and Democracy	12,000
Center for Young Women's Development	55,000
Center on Budget and Policy Priorities	660,000
Center on Policy Initiatives	25,000
Central American Resource Center Los Angeles	20,000
Central and Eastern European Harm Reduction Network CEE-HRN / Positive Movement	9,982
Centre de Recherches sur les Ecosystemes d'Altitude	4,000
Centre for Development Initiatives	5,000
Centre for Social Assessment	27,000

Centro de Arte Textil Zapoteco Bii Dauu	5,000
Centro de Derechos Humanos de la Montaña Tlachinollan A.C	10,000
Centro de Derechos Humanos de la Montaña Tlachinollan A.C / Organización de Mujeres Ecologistas de la Sierra de Patatlán	7,500
Centro de Derechos Humanos Miguel Agustín Pro Juárez, A.C	10,000
Centro de Estudios Legales y Sociales	10,000
Centro de Investigación y Planificación de Medio Ambiente	2,000
Centro Independiente de Trabajadores Agrícolas	15,000
Centro Mujeres	65,334
Centro Parroquial Ecuemnico Rosa Blanca / Asociacion IMPACVIH	9,000
Centro Por La Justicia / Southwest Workers Union	5,000
Chabad Lubavitch of the West Side, Inc.	13,000
Chabad of Greater South Bay	50,000
Chabot Space and Science Center	12,816
Chadelsh Yamelnu	2,000
Challenge Day	1,000
Challenge Learning Center	250
Changemakers	75,500
Charitable Foundation for a Healthy Society	9,968
Charity Fund Bridge	9,923
Charles Darwin Foundation	500
Charlotte Maxwell Complementary Clinic	2,500
Cheshire Community Care Centre	10,000
Chi Heng Foundation	2,000
Chicago Recovery Alliance	18,500
Child Welfare League of America	93,000
Childcare Project / Cooperative Economics for Women	1,500
Children's Defense Fund	32,914
Children's Organ Transplant Association	3,400
Children's Rights	15,000
Children's Service Society of Wisconsin	48,500
China AIDS Info	10,100
China Labor Support Network	100,000
China Labour Bulletin	118,629
Chinatown Service Center - Family Health Center	50,000
Chinese Association of STD/AIDS Prevention and Control / Mangrove Support Group	2,000
Chochmat Halev	10,500
Choice USA	30,000
Chums of the Maxwellton Salmon Adventure	100
Church of St. Mary the Virgin	10,000
Church of the Holy Light of the Queen	92,000
Church World Service	1,000
Cincinnati Art Museum	5,500
Circle of Life	105,000
Circle Pines Center	8,000
Circumpolar Conservation Union	2,500
Citizen Alert	12,500
Citizens for Responsibility and Ethics in Washington	45,000
Citizens for Tax Justice	20,000
Citizens United for the Rehabilitation of Errants - Oklahoma, Inc	12,500
City of Hope	1,000
CLAL- The National Jewish Center for Learning and Leadership	1,008
Clarence Foundation	12,500
Classical Chinese Puzzle Foundation	10,000
Clean Elections Institute, Inc.	500
Clean Water Action	15,000
Clean Water Fund	68,000
Clinica Sierra Vista	50,000
Clinicas de Salud del Pueblo	55,000
Clinicas del Camino Real	50,000
Club Mouche Saumon Allier	4,000
Club of Mutual Support Life +	20,000
Coalition for Equality in New Mexico / Santa Fe Living Wage Network	20,000
Coalition for Humane Immigrant Rights of Los Angeles	50,000
Coalition for Quality Children's Media	15,000
Coalition for the Homeless	12,000
Coalition of Immokalee Workers	25,000
Coalition of Institutionalized Aged and Disabled	30,000
Coalition of Women for Peace	5,000
Coalition on Homelessness, San Francisco	2,500
Coalition to Abolish Slavery and Trafficking	30,000
Coalition to Stop Gun Violence	24,587
Coastal Health Alliance	52,000
Cobscook Community Learning Center / Nulankeyutmonen Nkihtaqmikon	2,000
Coleman Advocates for Children And Youth	2,000
Collaborative Urban Sculpture	10,000
Collectif Adour Eau Transparente	5,000
Collective Heritage Institute	35,000
Collective SPACE	25,000
Colorado Criminal Justice Reform Coalition	15,000
Columbia County Youth Project	4,000
Columbia University	2,500
Columbia University In the City of New York	120,000
Columbia University In the City of New York	250
Comfort for America's Uniformed Services Elite	2,500
Comision Nicaraguense de Ayuda al Nino con Cancer	5,000
Comite de Sauvegarde du site de Clarency-Valensole	8,000
Common Cause Education Fund	2,000
Common Counsel Foundation	92,000
CommuniCare Health Centers	50,000
Communities for a Better Environment	3,000
Community Access, Inc.	30,000
Community Action Resource	17,000

Community Aid and Development Corporation	18,750
Community Alliance for Special Education	100
Community Alliance with Family Farmers	1,500
Community Awareness and Treatment Services, Inc.	15,000
Community Change	2,000
Community Clinic Association of Los Angeles County	81,000
Community Council For The Homeless at Friendship Place	5,000
Community Development Pacific, Inc / Hul Malama O Mo'omomi	9,500
Community Educational Services	40,000
Community Foundation of the Ozarks	2,000
Community Futures Collective / Common Ground Collective	5,000
Community Futures Collective / Sevantn Native American Generation	4,500
Community Health Access Network	1,500
Community Health Awareness Group	20,000
Community Health Centers of the Central Coast	100,000
Community Health Clinic Ole	50,000
Community Health Partnership of Santa Clara County	59,000
Community Health Systems, Inc.	50,000
Community High School Foundation Inc / Summit Preparatory High School	500
Community IMPACT! Nashville	1,000
Community Medical Centers	50,000
Community Music Center	1,500
Community Music Center of Boston	55,000
Community Partners / Multi-Ethnic Immigrant Organizing Network	35,000
Community Partners / Nepal Sewa Center	25,600
Community Partners / Southern Californians for Youth	10,000
Community Partners / Sustainable Agriculture and Food Systems Funders	1,000
Community Resource Center	600
Community Resource Center, Inc. / BlueGiving	5,008
Community Resource Exchange	25,000
Community School of the East Bay	10,000
Community United Against Violence	3,188
Community Voices Heard	10,000
Compass Community Services	15,000
Comunicacion Indigena S. C.	10,000
Concern America	1,000
Congregation Beth El	2,000
Congregation B'nai Jeshurun	26,008
Congregation Emek Beracha	50,000
Congregation Mosdos Tash	9,000
Consejo Regional Indigena del Cauca	1,500
Conservacion Patagonica	25,000
Conservation International	34,500
Conservation Voters New Mexico	10,000
Consortium for Independent Journalism, Inc.	1,000
Consortium for Sustainable Village-Based Development / Indigenous Stewardship Model	5,000
Consultative Group on Biological Diversity	11,750
Convivencia y Espacio Publico A C	20,000
Cooper Union for the Advancement of Science and Art	2,000
Cooperativa Development Institute / Cape Ann Food Co-op	25,000
Coordenadora Ecumenica de Servicio	35,000
Coordinadora Nacional de Derechos Humano	4,500
Coordination des ONG et Associations Féminines du Niger	8,000
Copper Tower Family Medical Center	50,000
Coral Reef Alliance	1,000
Corporacion Casa De La Mujer	5,000
Corporacion Foro Joven	5,000
Corporation for Supportive Housing	15,689
Corporation for the Northern Rockies	1,500
Corpus Christi Church	25,000
Corpus Christi School	10,000
Correctional Association of New York	10,000
Council of State Governments	40,000
Council on Indigenous Nations	2,500
CounterPULSE	3,000
Court Appointed Special Advocates	5,000
Crabgrass	800
Creating Hope International	25,000
Creative Awareness Project	5,000
Crede	10,000
Crittenden County Workforce Alliance	35,000
Crude Accountability	10,000
Cumberland River Compact	500
Cystic Fibrosis Research	1,000
Dads and Daughters	26,000
Dalit Foundation	300,000
Dallas Peace Center	1,000
Dance Palace Community Center	5,000
Dance Theater Workshop	15,500
Darin M. Camarena Health Centers	50,000
DataCenter	10,000
Death with Dignity National Center	100
Defense of Iraqi Women's Rights / Organization of Women's Freedom in Iraq	5,000
Del Norte Clinics	250,000
Democracy Now!	15,000
Democracy Works	20,000
Demos	282,245
Deschutes Basin Land Trust	10,000
Destiny Arts Center	40,000
Development for Rural Oppressed Peoples Service Society	5,000
Development Group for Alternative Policies	10,000
Development Group for Alternative Policies / Alliance for Responsible Trade	18,056

Development of Humane Action Foundation	12,000
Dhammayletra Mongkol Borei	5,000
Dharma Foundation	250
Dine Citizens Against Ruining Our Environment	2,000
Disability Rights Advocates	14,791
Disaster Psychiatry Outreach	20,000
Doctors of the World	31,437
Doctors Without Borders USA	106,863
Dogwood Initiative	59,107
Domestic Workers Home Care Center	1,000
Donaldina Cameron House	3,188
Donors of Tirtagangga Foundation	28,000
Door Dog Music Productions	10,000
Doris Day Animal Foundation	1,800
DRCNet Foundation / Red Latinoamericana para la Reforma de las Politicas de Drogas	17,000
Drug Policy Alliance	68,975
Earth Care International	2,000
Earth Day Network	10,000
Earth Island Institute / Bay Area International Development Organizations	1,500
Earth Island Institute / Kids for the Bay	15,000
Earth Matters Tennessee	500
Earthjustice	54,750
EarthRights International	19,362
Earthville Network	6,008
East Bay Alliance for a Sustainable Economy	25,000
East Bay College Fund	2,000
East Bay Habitat for Humanity	500
East Valley Community Health Center	50,000
Easton Mountain	5,000
EastSide Arts Alliance	1,000
Eau et Rivieres de Bourgogne	7,000
Ebbetts Pass Forest Watch	4,000
Eckerd College	25,000
Eco-Ed / Sicangu Way of Life	9,000
EcoLogic Development Fund	5,000
Ecologistas en Accion	7,500
Ecology Action Centre	4,000
Ecology Center	100
Ecology Center / Bay Area Coalition for Headwaters	2,000
Economic Opportunity Institute	10,000
Ecumenical Association for Housing	2,604
Ecumenical Ministries of Oregon	12,000
Education Without Borders Foundation	10,493
Educators for Social Responsibility	20,587
Elsner Pediatric and Family Medical Center	50,000
El Proyecto Del Barrio	50,000
Elizabeth Glaser Pediatric AIDS Foundation	50,000
Ella Baker Center for Human Rights	51,668
Emerge - Women Leaders for a Democratic Future	11,000
Emery Education Foundation	33,000
Emma Willard School	100,000
Emory University	2,000,000
Enda Tiers Monde	25,000
Endangered Species Coalition	250
EngenderHealth	110,000
Enterprise Community Partners, Inc.	500,000
Enterprise Development International	1,500
Entre Todos	25,963
Environment In the Public Interest	3,500
Environmental Action Committee of West Marin	4,500
Environmental Defense	1,500
Environmental Defense Project of Sierra County	2,500
Environmental Support Center	25,000
Environmental Support Centre	72,889
Environmental Traveling Companions	1,000
Environmental Working Group	7,000
Episcopal Charities	50,000
Episcopal Coalition to Abolish Biblical Literalism	600
Eqbal Ahmad Foundation	6,000
Equal Ground	2,000
Equal Justice America	1,000
Equal Justice Initiative of Alabama / Family Members of Inmates	2,600
Equal Rights Advocates	24,954
Equality Now	30,000
Equilibres et Populations	130,000
Equip K.I.D.S International	28,600
Esalen Institute	5,000
Escuelas para la Vida	2,316
Estonian Network of HIV Positive People	9,892
Ethical Culture Fieldston Schools	100,000
Ethiopian Community Development Council	20,000
Eutox	5,000
Eva Leah Gunther Foundation	2,500
Evaoke Dance Theatre	5,000
Every Child Can Learn Foundation / Preparing the Ground	7,500
Everyday Zen Foundation	1,200
Exit Art	50,000
Eyak Preservation Council	5,000
Eye on Aceh	30,000
Fabrangen Havurah	2,000
Fahamu Trust	127,657
Fair Oaks Elementary School	500

Fairness and Accuracy in Reporting	2,500
Faith In Place	18,000
Family Restoration House	30,000
Family Support Center	5,000
Family Violence Prevention Fund	20,260
Far Brook School	5,000
Farm and Wilderness	125,000
Farm Sanctuary	1,800
Fauna & Flora International	3,000
Federation of Southern Cooperatives	74,600
Federation of State Conservation Voter Leagues	100,000
Feodosiya Initiative Group of All Ukranian Charitable Organization	10,000
FERUS Groupe Loup France Artus	1,500
FIERCE	48,334
Fifth Avenue Committee / Prison Moratorium Project	6,000
Film Arts Foundation / Disability Media Arts Project	25,000
Film Arts Foundation / Redbird Films	18,560
Firelight Foundation	160,000
First Amendment Foundation	1,000
First Church of Christ Scientist	5,000
First Church of Religious Science Oakland	500
First Hungarian Congregation Oshab Zedek	4,000
First Nations Development Institute	600,000
First People's Fund	45,552
First Place Fund for Youth	25,000
Fiscalia del Medio Ambiente	8,000
Fiscalia del Medio Ambiente / Ecosistemas	40,000
FJC / Generation Schools Network	4,088
Flyaway Productions	10,000
Flycasters Educational Foundation	11,500
FoodChange	110,000
Foolproof's American Voices	2,500
Forest Guardians	5,000
Forest Stewardship Council - Canada	18,879
ForestEthics	356,000
Foro Nacional de Pueblos Indigenas	15,000
Fortune Society	2,000
Forum-Asia	10,000
Foundation Fighting Blindness	7,000
Foundation for Art and Preservation in Embassies	100
Foundation for Christ Consciousness	10,000
Foundation for Co-existence	25,000
Foundation for Credit and Community Assistance Uganda	7,500
Foundation for Dance Promotion	6,600
Foundation for Human Enrichment	25,000
Foundation for Independent Video and Film	5,000
Foundation for National Progress	31,000
Foundation for Small Enterprise Economic Development	25,000
Foundation for the Chapel of Sacred Mirrors	10,000
Foundation for the Healing Force of the Amazon	35,750
Franciscan Hospital for Children	2,500
FRANSIDA	9,882
Free Press	3,000
Free Trade Zones and General Services Employees Union	30,000
Freedom from Hunger	15,000
Frente Autentico Del Trabajo	20,000
Friends and Foundation of the San Francisco Public Library	500
Friends for Street Children	23,000
Friends In Deed	7,704
Friends of Clayoquot Sound	1,500
Friends of Cortes Island Society	958
Friends of Discovery Park	250
Friends of Fiber Art International	500
Friends of Friends Medical Support Fund	500
Friends of Ganondagan / Indigenous Revitalization School	5,000
Friends of Guatemalan Children	540
Friends of Jerusalem College of Technology	5,000
Friends of Juniper Flats	3,000
Friends of Santa Cruz County Animals	2,500
Friends of Thailand	1,350
Friends of the Earth	142,811
Friends of the River Foundation	3,000
Friends of Victim Witness Assistance Program / Family Violence Project	3,188
Friends of Washoe	12,500
Friends Peace Teams	5,553
Friendship Adult Day Care Center	500
Friendship Bridge	2,500
Front Line	15,000
Fund for Global Awakening	1,847
Fund for Idaho	214
Fund for Independent Publishing	1,010,000
Fund for Indigenous Rights and the Environment	7,000
Fund for International Nonprofit Development	1,308,493
Fund for the City of New York / Women's eNews	28,708
Fundacao para o Desenvolvimento Sustentavel	60,000
Fundacion Apoyo y Solidaridad	120,583
Fundacion Apoyo y Solidaridad / RedLa+	23,367
Fundación Casa GAMl	15,000
Fundacion Chinandega 2001	10,000
Fundacion Cuero y Salado	2,000
Fundacion Cultural Rodolfo Morales	8,000
Fundacion Educacion Popular en Salud	11,747

Fundacion en Accion / Grupo Iberoamericano de Publicaciones sobre el VIH	24,890
Fundación Leer	77,125
Fundacion Myrna Mack	5,000
Fundación para el Desarrollo de la Democracia	3,500
Fundacion para el Desarrollo Integral de la Mujer Popular	5,000
Fundacion para el Desarrollo Integral de la Mujer Popular / Asociacion de Mujeres Afro La Paz	2,700
Fundacion Puedes	2,500
Fundacion Servicio Paz y Justicia / Dialogo 2000 - Jubileo Sur/Americas	60,000
Fundacion Sociedades Sustentables	20,500
Fundación Vida Silvestre Argentina	31,200
Funders for Lesbian and Gay Issues	250
Funders' Network For Smart Growth and Livable Communities	10,000
Future Generations	293,151
Fuyang AIDS Orphans Salvation Association	2,000
GABRIELA A National Alliance of Women's Organizations	3,000
Gainesville Wilderness Institute	1,500
Galería de la Raza	4,500
Gallano Conservancy Association	3,100
Gandhian Unit for Integrated Development Education	10,000
Gardner Family Health Network	250,000
Gay & Lesbian Advocates & Defenders	12,000
Gay And Lesbian Leadership Institute	10,000
Gay Men's Health Crisis	200
Gender Public Advocacy Coalition	2,500
Generation Five	1,250
George Washington University	40,000
Georgetown Day School	8,500
Gerber/Hart Library	4,000
GESTOS Soropositividade, Comunicacao e Genero	16,000
Girl Child Network	47,500
Girls 2000	50,000
Girls 2000 / Bayview Safe Haven	50,000
Girls Club of Alachua County, Inc.	2,500
Girls Incorporated of New York City	20,000
GirlSource	5,000
GirlVentures!	25,000
Give to Colombia / Fundacion Juan Felipe Gomez Escobar	12,817
Gilde Health Clinic	35,000
Global Democratic Citizens Union	3,000
Global Exchange	10,000
Global Exchange / Maya Traditions	1,000
Global Family	1,008
Global Fund for Children	5,000
Global Fund for Women	899,305
Global Fund for Women / Central American Women's Fund	1,000
Global Fund for Women / Women's Hope and Education and Training Trust	5,000
Global Greengrants Fund	656,175
Global Health Access Program	30,000
Global Nomads Group / Campaign for Innocent Victims in Conflict	2,800
Global Response	2,000
Global Security Institute	66,926
GLSEN	12,000
Golden Gate National Parks Conservancy	8,750
Golden Valley Health Center	40,000
Golos AntiAIDS	10,000
Gonzaga Preparatory School	38,772
Good Jobs First	30,000
Governor's Institutes of Vermont	2,500
Grand Canyon River Guides	1,000
Grantmakers In Health	5,000
Grassroots Institute for Fundraising Training	5,000
Grassroots International	12,913
Grassroots Leadership	25,050
Grassroots Policy Project	40,000
Grays Harbor County Public Health and Social Services	25,000
Great Basin Mine Watch	150,000
Greater Golden Hill CDC / Thirty-Second Street Canyon Task Force	3,000
Green Empowerment	20,000
Green Media Toolshed	65,000
Greenbelt Alliance	3,000
GreenBlue Institute	300,000
Greenpeace	43,526
Greenpeace Fund	3,800
Greensboro Justice Fund	250
Greenwich House	500
Grayston Foundation	2,000,000
GROOTS International	90,271
Groundswell Community Mural Project	5,000
Groupement des Femmes de Banifandou II	5,000
Grupo Primavera	20,000
Grupo Solidaridad Positiva	10,500
Gwich'in Steering Committee	7,500
Ha-Am	340,000
Habitat for Humanity International	27,177
Hampshire College	1,000
HandMade In America	25,000
Hands On Bay Area	1,500
Harm Reduction Center	18,500
Harm Reduction Coalition	50,000
Harm Reduction Coalition / North Carolina Harm Reduction Coalition	20,000
Harrow Development Trust	52,620
Harvard University	2,500

Harvard University Interfaculty Program for Health Systems	10,000
Harvest of Hope Foundation	1,500
Haven House	15,000
Hayward Community Schools District / Waadookodaading	5,000
Healing Journeys	500
Health Care Without Harm	225,000
Health Care Without Harm Europe	5,000
Health, Hope and HIV Network	13,000
HealthReach Network - Dayspring AIDS Support Services	25,000
Healthy Environment Alliance of Utah / Ohngo Guadadeh Devia	7,500
Heart of America Northwest	26,500
Heartland Alliance for Human Needs and Human Rights	20,000
Heffter Research Institute	5,000
Heffer International Foundation	800
Helping Hand Youth Foundation	8,810
Hesperian Foundation	2,000
High Country Foundation	1,500
High Sierra Volunteer Trail Crew	4,971
Hill Country Community Clinic	50,000
Himpunan Serikat Perempuan Indonesia	6,300
Historic Germantown Nashville	500
Historic Nashville	250
Hogar de Ninos Angeles	10,000
Homeless Action Committee	1,000
Homeless Children's Network	25,000
Homeless Prenatal Program	20,000
Homeward Bound	250
Homies Unidos / Comunidades de Ayuda Directa a El Salvador	10,402
HOPE-PALS Foundation	18,900
Horizons Foundation	2,500
Horses Helping People	1,500
House of Mercy	1,000
House of the Children	25,000
Housing Works, Inc.	1,000
Human Arts Association, Ltd	20,000
Human Kindness Foundation	10,000
Human Rights Campaign Foundation	1,000
Human Rights First	31,500
Human Rights Watch	300,061
Humanitarian Action	48,874
Hyacinth AIDS Foundation	100,000
Hygeia Foundation	3,000
I B. Tauris & Co Ltd.	10,000
Ibis Reproductive Health	30,000
Idaho Rivers United	2,500
Idaho Women's Network Research and Education Fund	30,000
Ideaprov	250
IEARN-USA	15,000
Iiff School of Theology	1,000
Impact Foundation of Sri Lanka	25,000
Imperial Beach Health Center	50,000
In Defense of Animals	1,800
In the Life Media, Inc.	1,000
Independent Feature Project / Green Green Water	2,500
Independent Media Institute	46,076
Independent Media Institute / SPIN Project	48,900
Independent Television Service	50,000
Indian Community Welfare Organization	23,884
Indian Health Center of Santa Clara Valley	50,000
Indian Health Council	50,000
Indian Law Resource Center	150
Indian Network for People Living with HIV/AIDS	40,040
Indian Network for People Living with HIV/AIDS / Delhi Network of Positive People	9,863
Indian Valley Housing Corporation	787
Indiana Youth Group	5,000
Indigenous Environmental Network	15,128
Indigenous Peoples Council on Biocolonialism	25,000
Indigenous Women's Network	11,000
Infact	5,000
Infinity Gospel Ministries / Parents Who Care	10,000
InfOGM	6,500
Information Clearinghouse for Chinese Gays and Lesbians	500
Informational Center at the Counsel of Nongovernmental Organizations	21,800
Ingwavuma Orphan Care	9,424
Iniciativa Latinoamericana	11,000
Inland Sea Society / Bad River Gitlganing Garden Project	2,500
Innerwheel Club of Kampala / Railway Children's Primary School	25,000
Innocence Project	18,383
Insight	5,000
Insight Prison Project	30,000
Institute for Agriculture and Trade Policy	45,000
Institute for America's Future	218,791
Institute for Child, Adolescent and Family Studies	7,500
Institute for Civil Society	50,000
Institute for Community Economics	100,075
Institute for Energy and Environmental Research	15,000
Institute for International Criminal Investigation	10,000
Institute for Jewish Spirituality	15,500
Institute for Labor & the Community	40,000
Institute for One World Health	5,000
Institute for Orkoneerel Pastoralists Advancement	50,000
Institute for Policy Studies	20,000

Institute for Public Affairs	2,500
Institute for Shipboard Education	1,000
Institute for Social and Cultural Communications	2,500
Institute for Social Policy and Understanding	40,000
Institute for Southern Studies	40,000
Institute for Traditional Medicine / Drepung Gomang Dratsang	25,000
Institute of Classical Homeopathy	13,582
Institute of Human Rights Communication Nepal	5,000
Institute of Noetic Sciences	20,000
Institute on Taxation and Economic Policy	2,500
Instituto Centro de Vida	5,000
Instituto de Artes Gráficas de Oaxaca	2,000
Instituto de Educacion Popular del Sur de California	25,000
Instituto de Estudos e Pesquisas em Aids de Santos	17,000
Instituto de Investigacion y Desarrollo	20,000
Instituto Guerrerense de Derechos Humanos A C / Red Guerrerense de Organismos Civiles de Derechos Humanos	25,000
Instituto Latinoamericano de Servicios Legales Alternativos	18,100
Instituto Terra	155,000
Intercambios Asociacion Civil	17,000
Interchurch Ministries of Nebraska	20,000
Interfaith Center on Corporate Responsibility	1,500
Interfaith House, Inc	7,500
Interior AIDS Association / Northern Exchange	20,000
Intermountain Harm Reduction Project	10,000
Intermountain Planned Parenthood, Inc	430
International Buddhist Center	2,800
International Center for Global Communications Foundation / Fund for Authentic Journalism	17,000
International Community of Women Living with HIV/AIDS	203,533
International Development Exchange	22,000
International Forum on Globalization / Oakland Institute	2,000
International Gay and Lesbian Human Rights Commission	27,464
International HIV/AIDS Alliance	68,615
International HIV/AIDS Alliance / Guangxi Nanning HongChouDai Health Information Counseling Service Company	9,000
International Humanities Center / Coalition Against Militarism in Our Schools	20,000
International Humanities Center / Voter Action	57,000
International Humanities Center / WildPlaces	3,700
International Indian Treaty Council	5,050
International Labor Rights Fund / Eye on Aceh	5,000
International Media Project	7,000
International Media Project / National Radio Project	2,000
International Midwife Assistance	1,000
International Museum of Women	300,000
International Planned Parenthood Federation/Western Hemisphere Region	5,000
International Relations Center	89,500
International Rescue Committee	1,000,000
International Rivers Network	767,500
International Sephardic Education Foundation	20,000
International Women's Health Coalition	20,000
Internews Network	13,484
Interns for Peace	5,000
Interracial Family Circle	250
Interreligious Foundation for Community Organization / Not in Our Name	2,000
Intersection for the Arts	1,000
Intersex Society of North America	5,000
Intervale Foundation	250
Inuit Circumpolar Conference Foundation	2,500
Iowa Department of Public Health	40,000
Iraqi Al-Amal Association	15,000
Irish Seed Savers	3,300
Isha L'Isha-Halfa Feminist Center	5,000
Island Conservation	25,000
Island Institute	150,000
Israel Policy Forum	27,000
Israel Venture Network	5,000
Istituto Thevanin	820
Jacksonville Area Sexual Minority Youth Network, Inc	38,000
Jamaican Network of Seropositives	14,000
Jamestown Community Center	40,000
Jane Addams Peace Association / Women's International League for Peace and Freedom	3,000
Jaringan Advokasi Tambang	13,000
Jaringan Perempuan Untuk Keadilan	3,000
Jazz at Lincoln Center	3,333
Jewish Board of Family & Children's Services, Inc	1,000
Jewish Community Center on the Palisades	4,000
Jewish Family and Children's Services	10,688
Jewish Federation of Greater Phoenix	1,000
Jewish Fund for Justice	6,040
Jewish Funders Network	5,250
Jewish Organizing Initiative	250
Jews for Racial and Economic Justice	2,500
Just Food	10,000
Justice Matters Institute	2,000
Juvenile Diabetes Research Foundation	15,000
Kadist Foundation	300,000
Kaleidoscope Youth Coalition	1,500
KALW 91.7 FM	250
Karuna Center for Peacebuilding	15,000
Katahdin Foundation	2,000
Kayan Feminist Organization / ASWAT - Palestinian Gay Women	3,600
Kehilla Community Synagogue / Jewish Youth For Community Action	2,000
Kids on Broadway of Santa Cruz County	500
Kids' Turn	5,000

Kivel Campus of Care	500
Klamath Forest Alliance	3,500
Klamath Siskiyou Wildlands Center / Red Buttes Wilderness Campaign	2,500
Koalisi Perempuan Indonesia	5,000
Korean Health Education Information Research Center	50,000
Korean Immigrant Workers Advocate	30,000
KQED	4,000
Kreitzberg Family Foundation	5,072,848
Kripa Foundation	8,744
KSER Foundation / KSER-FM Public Radio	50
KUOW Public Radio	100
KWMR - West Marin Community Radio	2,500
La Clinica De La Raza - Fruitvale Health Project	50,000
La Fundacion De La Candelaria	9,423
La Maestra Family Clinic	75,000
La Mujer Obrera	30,000
La Peña Cultural Center	500
Laguna Mountain Volunteer Association	4,200
Lakota Fund / Defenders of the Black Hills	10,000
Lakota Fund / Lakota Action Network	3,500
LAM Foundation	28,305
Lambda Legal Defense and Education Fund	73,220
Lambi Fund of Haiti	5,000
Landessportfischerverband Schleswig Holstein e.V.	7,000
Laos National Network of People Living with HIV/AIDS	10,000
Las Palomas de Taos	15,000
Latin America Working Group Education Fund	20,000
Latin School of Chicago	500
Latino Leadership	34,456
Laubach Literacy International / Cambodia World Family	5,000
Lawyers' Committee for Civil Rights of the San Francisco Bay Area	5,000
Lawyers Committee on Nuclear Policy	2,500
Lawyers for Children	500
Leadership Conference on Civil Rights Education Fund	500
Leadership Excellence	40,000
Leadership Institute for Ecology and the Economy	14,779
League of Conservation Voters	80,000
League of Conservation Voters Education Fund	105,791
League of Independent Voters	40,500
League of United Latin American Citizens	20,000
League of Women Voters of Nebraska Education Fund	16,535
League of Young Voters Education Fund	150,000
Leather Archives and Museum	2,500
Legal Advocates for Washington School	5,000
Legal Services for Children	38,000
Lensic Performing Arts Center	5,000
LEPRA Society	6,442
Les Amis de la Terre	12,000
Lexington Books	5,000
Liberty Hill Foundation	164,366
Life Frames	5,000
Lifeline Ministries / Life Goes On	17,500
LifeLong Medical Care	50,000
Lindsay Wildlife Museum	1,000
Linnaea Farm Society	1,780
Literacy for Environmental Justice	51,000
Living Compassion	2,000
Living In Hope Support Group	6,579
Living Rivers	2,500
Livingston Medical Group	50,000
LO*OP Center / The John Vasconcellos Legacy Project	5,000
Local Indians for Education / Native Youth Cultural Exchange	3,000
Loco Bloco Drum and Dance Ensemble	45,000
Lompico Watershed Conservancy	4,800
Long Valley Health Center	50,000
Los Alamos Study Group	3,000
Los Angeles Alliance for a New Economy	25,000
Los Angeles Free Clinic	50,000
Los Angeles Gay and Lesbian Center	2,500
Los Angeles Indigenous Peoples' Alliance / Union de Mujeres Oaxaqueñas	10,000
Los Angeles Mission Community Clinic	45,000
Los Padres Forest Watch	3,800
Louisiana Bucket Brigade	30,000
Louisiana Coalition Against Domestic Violence	2,750
Louisiana Environmental Action Network	45,000
Love In a Big World	500
Lowell School	1,000
Lower Eastside Girls Club of New York	25,000
Low-income Families' Empowerment through Education	1,000
Lummi Nation Service Organization	1,000
Lyon-Martin Women's Health Services	1,000
Maasai Girls Education Fund	15,000
Maasai Women Development Organization	50,000
MACT Health Board	50,000
MADRE	4,000
Magdalene Group Home	775
Mahila SEWA Trust	99,220
Main Stay Therapeutic Riding Program	5,000
Maine Native Prison Project	2,000
Make the Road by Walking	16,058
Make the Road by Walking / Bushwick Housing Independence Project	20,000
Malawian Youth In Development Activities	10,000

Mama Cash - Fund for Women	20,000
Mama Coca	17,000
Manaliva Violence Prevention Programs	3,188
Manhattan Day School	8,000
Manipur Network of Positive People	7,119
Marcus A. Foster Educational Institute / Oakland Technology Exchange West	25,000
Marijuana Policy Project Foundation	25,730
Marin Academy	5,000
Marin Agricultural Land Trust	7,500
Marin Arts Council	1,000
Marin General Hospital	5,000
Marine Conservation Biology Institute	2,625
Marine Conservation Biology Institute / Living Oceans Society	16,000
Marlboro College	1,000
Martha O'Bryan Center	200
Mary House	20,000
Massachusetts Institute of Technology	2,500
MassVOTE	45,000
Matrix	4,990
Matter of Trust, Inc. / Women's Global Green Action Network	500
Mattolie Restoration Council / Forest Practices Review Program	3,500
Maul Arts and Cultural Center	1,000
MAZON A Jewish Response to Hunger	1,040
MB Development Agency	8,800
McKelvey Educational Foundation	2,650,000
McKenzie River Gathering Foundation	20,000
Medecins Sans Frontieres Canada	1,000
Media Alliance	2,000
Media Matters Action Network	5,000
Media Matters for America	1,074,454
Mediators Foundation	3,600
Medica Mondiale	5,000
Medical Care Development Inc / Maine Community AIDS Partnership	100,000
Medical Students for Choice	21,000
Medical, Educational and Peace Organization	2,500
Medieval Japanese Studies Foundation	56,000
Mendocino Coast Clinics	50,000
Mendocino County AIDS Volunteer Network	10,000
Mental Health Association of Nassau County	12,500
Mercy Corps	110,000
Meretz USA	250
Metropolitan Community Foundation	15,000
Metropolitan Homelessness Project	5,000
Mexican American Legal Defense and Education Fund	5,000
Mexico Solidarity Network / Chiapas Media Project	13,000
Miami Workers' Center	20,000
Michigan Interfaith Power and Light	16,000
Mill Valley Philharmonic	1,000
Minnesota Council of Nonprofits	50,000
Minnesota Public Radio	2,181,800
Missao Sem Fronteiras	9,780
Mission Education Project	10,000
Mission Hill Middle School PTA	1,000
Mississippi Workers' Center for Human Rights	20,000
Moanalua Gardens Foundation	5,000
Mobile Medical Office	50,000
Molokal High and Intermediate School / Molokal Earth Preservation Organization	3,000
Montalvo Arts Center	6,500
Montefiore Medical Center	10,000
Monthly Review Foundation	2,000
Moore Community House	10,000
More Than Money	400
Morongo Basin Conservation Association	4,000
Mothers Acting Up / Mainstreet Moms Operation Blue	51,000
Mount Shasta Bio-Regional Ecology Center	5,000
Mount Sinai School of Medicine	36,000
Mountain Health and Community Services	50,000
Mountain Meadows Conservancy	5,000
Mountain Wilderness	10,000
Mountain Wilderness Switzerland	5,000
Mouvement pour les Droits et le respect des Générations Futures	7,500
Movement Research	10,000
Movement Strategy Center / Youth Media Council	2,000
Movimiento Sociocultural Para Los Trabajadores Haitianos	18,900
Moving Mountains The Donation Center	3,500
Moving on Center - School of Participatory Arts and Somatic Research	2,000
Moxie Firecracker Films	25,000
Ms Foundation for Women	894,381
MSM: No Political Agenda	18,900
Mt. Baker Planned Parenthood	1,157
Multidisciplinary Association for Psychedelic Studies	20,000
Musaniseke Support Group	7,230
Musella Foundation for Brain Tumor Research	229,549
Museum of Children's Art	40,000
Museum of Modern Art	19,500
Mystic Family Circus	500
NAACP Legal Defense and Educational Fund	198,675
NAACP National Voter Fund / National Coalition on Black Civic Participation	20,000
Nagarik Aawaz	31,000
Nanish Shontle	1,500
NARAL Pro-Choice America Foundation	17,120
Naropa University	5,000

Nashville Cares	1,000
National Accountability Group	112,298
National Advocates for Pregnant Women	40,000
National Alliance for Media Arts and Culture	20,000
National Anti-Vivisection Society	1,800
National Association for the Advancement of Colored People	45,000
National Association of Community Health Centers	15,000
National Association of Criminal Defense Lawyers	20,800
National Association of People Living with HIV in Nepal	20,000
National Association of Women and the Law	5,000
National Audubon Society	3,000
National Caravan Stage Company, Inc	4,000
National Center for Human Rights Education / INCITE! Women of Color Against Violence	5,000
National Center for Lesbian Rights	50,500
National Center for Policy Research for Women and Families	555,000
National Center for Science Education	17,648
National Child Research Center	5,000
National Coalition on Black Civic Participation	77,500
National College of Naturopathic Medicine	10,716
National Council of Churches	675,000
National Federation of Peasant Women	5,000
National Fisheries Solidarity	15,000
National Gallery of Art	1,000
National Gay and Lesbian Task Force Foundation	7,000
National Geographic Society	500
National Health Care for the Homeless Council	500
National Health Services, Inc	50,000
National Housing Law Project	1,000
National Jewish Outreach Program	2,500
National Latina Institute for Reproductive Health	37,500
National Latino Alliance for the Elimination of Domestic Violence	20,000
National Lawyers Guild	5,000
National Multiple Sclerosis Society of Northern California	250
National Network for Immigrant and Refugee Rights	5,000
National Network of Abortion Funds	30,000
National Network of Grantmakers	10,000
National Organization for Women Foundation	1,000
National Outdoor Leadership School	9,000
National Partnership for Women and Families	1,500
National Wildlife Federation	22,000
National Yiddish Book Center	5,000
National Youth Advocacy Coalition	10,000
Native Action	36,000
Native Animal Rescue	2,500
Natural Resources Defense Council	7,000
Nature Conservancy of California	21,500
Nature Conservancy of New York	10,000
Nava Kiran Plus	10,000
NDN, Inc	45,000
Neighborhoods Resource Center	250
Neng Guan Performing Arts Training Center of Rull	1,000
Network of African People Living with HIV/AIDS	112,768
Network of Entrepreneurship and Economic Development	32,500
Network of Self Support Groups In Ho Chi Minh City	10,000
NetWorks Productions, Inc	500
Nevai Kodesh, Jewish Renewal Community of Boulder	2,208
New England Forestry Foundation	125,000
New Israel Fund	16,800
New Jersey Association on Correction / New Jerseyans for Alternatives to the Death Penalty	35,000
New Jersey SEEDS	250
New Leaders for New Schools	1,000
New Light AIDS Control Society	7,485
New Marlborough Township Volunteer Emergency Services Fund Inc	300
New Mexico Association of Grantmakers	2,000
New Mexico Children's Foundation	1,000
New Mexico Community Foundation	6,200
New Mexico Community Foundation / Picuris Mine Relief Project	3,000
New Mexico Conference of Churches	10,000
New Mexico Conservation Education Fund	2,500
New Nonprofit Nexus / Code-Green	8,000
New Profile	5,000
New York City Lesbian, Gay, Bisexual and Transgender Community Center	500
New York Community Leadership Institute	250,000
New York Foundation for the Arts	5,000
New York Foundation for the Arts / Zula Pearl Films	100,000
New York Open Center	25,000
New York State Coalition Against Sexual Assault	1,000
New York Theatre Workshop	10,000
New York Women's Foundation	40,000
NGOs Coalition on Child Rights	6,000
Nhlangano AIDS Training Information and Counseling Centre	9,987
Nishmat	500
Nishtha	15,100
NMA Comprehensive Health Center	50,000
Nontraditional Employment for Women	12,000
Nonviolence International / East Timor Action Network	7,000
Nonviolent Peaceforce	15,000
North American Conference on Ethiopian Jewry	1,080
North American Syringe Exchange Network	100,000
North American Syringe Exchange Network / Harm Reduction Institute	10,000
North American Syringe Exchange Network / Points of Distribution	15,000
North American Wilderness Recovery, Inc	15,000

North Carolina Citizens for Justice	35,300
North Cascades Institute	10,000
North Cotabato Women Development Center, Inc.	5,000
North County Health Services	50,000
North Star Fund	5,000
Northeast Action	80,000
Northeast Action Campaigns	10,000
Northeast Valley Health Corporation	50,000
Northern Alaska Environmental Center	10,000
Northern California Regional Land Trust	4,320
Northern Plains Resource Council	10,000
Northern Rockies Conservation Cooperative	80,000
Northern Sierra Rural Health Network	75,000
Northwest Environment Watch	1,657
Northwest Labor and Employment Law Office	50,000
Northwest Women's Law Center	30,000
Northwestern University	5,000
NOW Legal Defense and Education Fund	13,648
Nuclear Age Peace Foundation	1,000
Oakland Leaf Foundation	2,500
Occidental Arts and Ecology Center	5,000
Occupational Knowledge International	10,000
Ocean Arks International / Water Stewards Network	250
Ocean Voyages Institute	25,000
Ocracoke Preservation Society	250
Odyssey Foundation	25,000
Odyssey Youth Center	2,500
Oesterreichischer Alpenverein	3,000
Office of the First Lady (Honduras)	15,000
Oglala Lakota College	100
Ohr Ha Torah	10,000
Oil and Gas Accountability Project	7,500
Oil Change International	87,500
Ojal Foundation	8,000
Old Growth Again Restoration Forestry	75,000
Olduvai Ontus	2,680
OMB Watch	5,000
One H.E.A R T	1,800
One River Foundation	1,360
One World Children's Fund	1,500
Open Door Community Health Centers	71,596
Openarms Youth Project Inc	2,000
Operation Blessing International	20,000
Operation Hope of Fairfield	2,000
Operation USA	30,000
Oral Lee Brown Foundation	500
Organic Farming Research Foundation	41,812
Organizacion de Medicos Indegenas del Estado de Chiapas A.C	2,000
Organizacion Feminina Popular	5,000
Organizatia obstetasca Interactiune	5,000
Orion Society	272,500
Orme School	500
OROT	2,500
Our Way	9,880
OUTKITSAP	5,000
Outright Vermont	3,000
Outside In	15,000
Overnight Productions	5,000
Oxfam America	68,800
P O C.O.V.I.	3,188
Pachamama Alliance	5,000
Pacific Center for Human Growth	6,250
Pacific Lutheran University / KPLU Public Radio	50
Pacifica Foundation	1,000
Pacifica Foundation / KPFA Radio	12,500
Pak Plus Society	8,500
Palestinian Working Woman Society for Development	5,000
Parent Encouragement Program	5,000
Parent Services Project	2,250
Parents for Public Schools	17,648
Parents, Families & Friends of Lesbians and Gays	6,000
Patmos Associates	1,000
Paul D Pickens II Research Foundation	3,000
Peace Action	19,199
Peace Action Education Fund	6,000
Peace and Development Institute	5,000
Peace Development Fund	51,050
Peace Development Fund / Class Action Network	16,000
Peacemaker Community USA	2,700
PEF Israel Endowment Funds / International Harp Contest In Israel	1,500
PEF Israel Endowment Funds / Kolot The Center for Jewish Women's and Gender Studies	10,000
Peggy Browning Fund	5,000
PEN/Faulkner Foundation	1,000
Peninsula Peace and Justice Center	2,000
Pennsylvania School for the Deaf	2,500
Penobscot East Resource Center	80,000
People and Planet	4,000
People for Educational Assistance and Community Enhancement	1,000
People for the American Way	50,434
People for the American Way Foundation	282,900
People for the Ethical Treatment of Animals	1,800
People of Faith Against the Death Penalty	25,000

People Organized to Win Employment Rights	25,000
Peoples Action for Development	25,000
People's Branch Theatre	1,000
People's Trust for Endangered Species	11,279
Peralta Parent Teacher Group	10,000
Performance Space 122	375
Performing Arts Workshop	12,000
Permacultura America Latina	1,000
Permaculture Association (Britain) / Earth Activist Training	5,000
Pesticide Action Network Germany	3,000
Pesticide Action Network North America	1,000
Peta Wakan Tipi	7,000
Petaluma Health Center	50,000
Peter Positive	9,822
Philadelphia Interfaith Action	5,000
Philharmonia Baroque Orchestra	500
Phipps Community Development Corporation	200
Phoenix Society for Burn Survivors	3,000
Physician's Committee for Responsible Medicine	1,800
Physicians for Human Rights	100,000
Physicians for Social Responsibility	27,138
Plegan Institute	5,000
Pilipino Workers' Center of Southern California	1,950
Pinoy Plus Association, Inc	17,000
Plan USA	20,000
Planetree	500
Planetwork	50,000
Planetwork / Current Innovations	15,000
Planned Parenthood Advocates of Kansas and Mid-Missouri	7,610
Planned Parenthood Affiliates of California	10,000
Planned Parenthood Association of Metropolitan Washington, DC	577
Planned Parenthood Association of Bucks County	286
Planned Parenthood Association of Southeastern Pennsylvania	480
Planned Parenthood Association of the Mercer Area	252
Planned Parenthood Association of Utah	318
Planned Parenthood Federation of America	15,558
Planned Parenthood Golden Gate	56,359
Planned Parenthood Health Services of Southwestern Oregon	1,462
Planned Parenthood Health Systems	164
Planned Parenthood Hudson Paconic	269
Planned Parenthood League of Massachusetts	2,838
Planned Parenthood Los Angeles	4,525
Planned Parenthood Mar Monte	51,604
Planned Parenthood Mohawk Hudson, Inc.	168
Planned Parenthood of Alabama	183
Planned Parenthood of Buffalo and Erie County	158
Planned Parenthood of Central And Northern Arizona	383
Planned Parenthood of Central New Jersey	187
Planned Parenthood of Central North Carolina	618
Planned Parenthood of Central Ohio, Inc.	274
Planned Parenthood of Chester County	224
Planned Parenthood of Connecticut	3,611
Planned Parenthood of East Central Iowa	170
Planned Parenthood of Georgia	803
Planned Parenthood of Greater Cleveland	100,351
Planned Parenthood of Greater Indiana	341
Planned Parenthood of Greater Iowa	158
Planned Parenthood of Greater Miami and the Florida Keys, Inc	187
Planned Parenthood of Greater Orlando	219
Planned Parenthood of Hawaii	285
Planned Parenthood of Houston and Southeast Texas, Inc	283
Planned Parenthood of Idaho	292
Planned Parenthood of Kansas and Mid-Missouri	246
Planned Parenthood of Louisiana and the Mississippi Delta	245
Planned Parenthood of Maryland	1,501
Planned Parenthood of Metropolitan New Jersey	382
Planned Parenthood of Middle and East Tennessee	385
Planned Parenthood of Mid-Michigan	382
Planned Parenthood of Minnesota/South Dakota	1,845
Planned Parenthood of Nassau County	1,282
Planned Parenthood of New Mexico	1,036
Planned Parenthood of New York City	1,447
Planned Parenthood of North Central Florida, Inc.	344
Planned Parenthood of North East Pennsylvania	283
Planned Parenthood of North Texas	197
Planned Parenthood of Northern New England	2,685
Planned Parenthood of Pasadena	936
Planned Parenthood of Rhode Island	293
Planned Parenthood of San Diego and Riverside Counties	250,883
Planned Parenthood of Santa Barbara, Ventura & San Luis Obispo Counties	251,236
Planned Parenthood of Southeast Michigan	271
Planned Parenthood of Southern Arizona, Inc	507
Planned Parenthood of the Blue Ridge	308
Planned Parenthood of the Columbia Willamette	2,420
Planned Parenthood of the Inland Northwest	221
Planned Parenthood of the Mid-Hudson Valley	383
Planned Parenthood of the Rochester Syracuse Region	208
Planned Parenthood of the Rocky Mountains	2,216
Planned Parenthood of the Southern Finger Lakes	224
Planned Parenthood of the Southwest Ohio Region	359
Planned Parenthood of the St. Louis Region	308
Planned Parenthood of the Susquehanna Valley	200

Planned Parenthood of the Texas Capital Region	508
Planned Parenthood of Western Pannsylvania, Inc.	329
Planned Parenthood of Western Washington	2,849
Planned Parenthood of Wisconsin, Inc.	1,369
Planned Parenthood Orange and San Bernardino Counties	563
Planned Parenthood Palm Beach Area, Inc.	352
Planned Parenthood Shasta-Diablo	3,899
Planned Parenthood/ Chicago Area	1,780
Ploughshares Fund	28,941
PLUS Development Foundation	4,990
Plymouth Meeting Friends School	7,500
Political Research Associates	35,000
Pomegranate Center	200
Ponca Tribe of Nebraska	5,000
Population Action International	1,000
Population Connection	2,000
Population Council	30,000
Portland Jewish Academy	540
Positive Initiative	10,000
Positive Muslims	9,953
Positive View	9,960
Potlatch Fund	2,000
Potter Valley Community Health Center	50,000
Pour la Terre	4,000
Powerful Schools	7,000
PowerPAC org	5,000
PR CoNCRA	79,740
Prajna Mountain Buddhist Order	360
Praxis Institute for Early Childhood Education	8,250
Praxis Project	20,000
Predator Conservation Alliance	2,500
Prep for Prep	36,000
Presidio Hill School	3,500
Press Connection Foundation, Inc. / Midwest Treaty Network	1,500
Prevention Point Philadelphia	25,000
Prevention Point Pittsburgh	68,500
Prevention Research Center	19,072
Pride Foundation	15,000
Program for Appropriate Technology in Health	155,000
Program for Torture Victims	25,000
Progress Unity Fund / International A.N.S.W.E.R. Coalition	2,000
Progress, Inc.	500
Progressive America Fund	100,000
Progressive Government Institute	15,000
Progressive Government Project	10,000
Progressive Maryland Education Fund	25,000
Progressive Media Project	5,000
Progressive Populist Education Fund	30,000
ProgressNow	5,000
Project Open Hand	7,500
Project Spera	7,500
Project Vote	202,000
proMONT-BLANC	6,000
ProPetén Foundation	8,389
Proteus Fund	5,000
ProTex. Network for a Progressive Texas / Ministry Advisory Council	40,000
ProTex: Network for a Progressive Texas / Texas Criminal Justice Coalition	215,375
Providence Foundation	35,000
Psicotropicus	17,000
Public Campaign	12,000
Public Campaign Action Fund	15,000
Public Conversations Project	2,500
Public Employees for Environmental Responsibility	19,934
Public Health Foundation Enterprises / Clean Needles Now/Harm Reduction Central	18,500
Public Health Foundation Enterprises / LifeWorks Mentoring	5,000
Public Health Institute, Inc	40,000
Public Interest Productions	7,500
Public Interest Projects	300,000
Public Media	2,500
Public Media Center	11,050
Qianxi Association for Women's Health	2,000
Quad Citlans Affirming Diversity	5,000
Queens College Foundation	23,000
Queenscare Family Clinics	50,000
Rabbis for Human Rights	1,500
RAD Educational Programs	6,000
Rainbow World Fund	500
Rainforest Action Network	126,800
Rainforest Alliance	5,000
RANS	9,868
Raphael House of San Francisco	20,300
Ravenswood Family Health Center	40,000
Rays of Light Ministries / Family Members of Inmates	3,500
Rcd. forgiven loan, TFR05-02376 Groundspring org	20,000
Reach Out Everglades and COPS, Inc	3,000
Reach the Children School	2,000
Realtors Relief Foundation	250
Reclaim Democracy	10,000
Red Cliff Band of Lake Superior Chippewas	2,000
Red de Ongs que Trabajan en VIH/SIDA Paraguay	13,000
Red Nacional de Accion Ecologica	37,000
Red Nacional de Casas de Refugio Para Mujeres y la Niñez Víctimas de Violencia	1,300

Red Nacional de Organismos Civiles de Derechos Humanos	10,000
Red Oaxaquena de Derechos Humanos	32,500
Redding Rancheria Indian Health Clinic	50,000
Rede Brasileira de Reducao de Danos	20,000
Redwire Native Youth Media Society	4,500
Redwood Community Health Coalition	60,000
Redwoods Rural Health Center	50,000
Reform Ohio Now	110,000
Refugee Women's Network	30,000
Regents of the University of California Berkeley Office of the President / Cal Performances at the University of California Berkeley	500
Regents of the University of California Berkeley Office of the President / Environmental Design Archives at the University of California Berk	1,000
Regents of the University of California Berkeley Office of the President / University of California Botanical Garden	10,000
Regents of the University of Michigan	15,000
Regional Social Organization with people living with HIV/AIDS - Centre Plus	10,000
Rekonstrukcija Zanski Fond	15,000
Relief International	2,500
Religious Coalition for Reproductive Choice	35,000
Religious Coalition for Reproductive Choice Education Fund	85,000
Renaissance Parents of Success	40,000
Reporters Without Borders	18,138
Reprolatina Solucoes Inovadoras em Saude Sexual e Reprodutiva	29,900
Reseau Camerounais des Associations de Personnes Vivant avec le VIH/SIDA	189,108
Resist	12,833
Resource Media	30,000
Re-Vivir	14,730
Revolving Museum	64,500
Rhode Island Family Life Center	30,000
Rhodes Charitable Trust / Center for Social Development	31,913
Richter Productions	2,500
Rights Action	2,000
Rising Tide International / Jerusalem Peacemakers	50,000
River Network	5,000
River of Words	5,200
Riverlink	1,000
Robert F. Wagner Graduate School of Public Service at NYU	29,614
Rock the Vote Education Fund	5,670
Rockefeller Family Fund / Environmental Grantmakers Association	20,000
Rockwood Leadership Program	4,087
Roman Catholic Diocese of Bridgeport	50,000
Romero Institute	35,000
Ronald McDonald House - Nashville	1,900
Ronald McDonald House of New York Inc	43,222
Room to Read	81,759
Rosen Institute	1,000
Rosenberg Fund for Children	2,500
ROTE NASEN Clowndoctors International	50,000
Royal High School	1,000
Rudolf Steiner Foundation Global Community Fund	4,500,000
Ruach Hamidbar	1,500
Rubicon Programs	600
Ruchika Social Service Organisation	75,000
Rudolf Steiner Foundation	20,000
Rudolf Steiner Foundation / Pie Ranch	2,000
Rulli Women and Children Development Centre	9,890
Running Strong For American Indian Youth / Brave Heart Society	1,500
Rural Coalition	85,000
Rural Development Foundation	15,000
Rural Education and Economic Enhancement Programme	16,000
Rural Reconstruction Society	10,000
Rural Women's Movement	53,180
Rutgers University Foundation	50,000
Sacramento Loaves and Fishes	20,000
Sacred Heart Canossian College	24,241
SA/AIDS	26,140
Safer Alternatives Through Networking and Education	48,500
Saint Paul's School	3,250
Salt Lake City Bicycle Collective	750
Salud Para La Gente	36,000
Samanvaya Ashram	6,350
San Benito Health Foundation	50,000
San Diego American Indian Health Center	50,000
San Diego Foundation for Change	2,500
San Francisco Bar Association Volunteer Legal Services Program	3,188
San Francisco Bar Association Volunteer Legal Services Program / Cooperative Restraining Order Clinic	3,188
San Francisco Child Abuse Prevention Center	35,000
San Francisco Cinematheque	1,000
San Francisco Community Clinic Consortium	70,000
San Francisco Foundation Community Initiative Funds / Arts Education Funders Collaborative	12,000
San Francisco Foundation Community Initiative Funds / California Commission on the Fair Administration of Justice	75,000
San Francisco Green Community	500
San Francisco Jazz Organization	500
San Francisco Jewish Film Festival	1,000
San Francisco Medical Center Outpatient Improvement Programs	250,000
San Francisco Museum of Modern Art	1,500
San Francisco State University / César E. Chávez Institute of San Francisco State University	48,500
San Francisco State University / Whirlwind Wheelchair International	15,000
San Francisco Study Center / Harm Reduction Coalition	18,500
San Francisco Unified School District / KALW 91.7 FM	500
San Francisco University High School	5,000
San Miguel - CASA Inc / Centro para los Adolescentes de San Miguel de Allende, A.C	25,730
San Ysidro Health Center	250,000
Sandglass Theater	5,000

Sangha Metta Project	20,459
Santa Barbara Neighborhood Clinics	50,000
Santa Clarita Organization for Planning and the Environment	2,500
Santa Cruz AIDS Project / Santa Cruz County Needle Exchange Program	10,000
Santa Cruz Women's Health Center	50,000
Santa Fe Film Festival	5,000
Saplentis	1,000
SAR Academy	9,000
Satellite Housing	500
Savanna Conservation Nigeria	6,130
Save San Francisco Bay Association	5,000
Save the Children Federation	17,900
Saviya Development Foundation	24,000
Sawed Trust - Centre for Social Action, Women's Education and Development	5,000
School of Hope	500
School Year Abroad	2,500
Schools Online	2,500
Schumacher College Foundation	13,400
Scottsdale Cultural Council	7,500
Sculpture Center	25,000
Seattle Jr Golf Foundation	2,500
Seattle Rotary Service Foundation	2,500
Securing America's Future Energy Foundation	5,000
Servicemembers Legal Defense Network	250
Servicio Paz y Justicia - Mexico	10,000
Servicios Y Asesoría Para La Paz, AC	20,000
Sevalaya	25,000
Seventh Generation Fund / Indigenous Youth Coalition of Pinon	4,500
Seventh Generation Fund / Sustainable Nations Development Project	3,000
Seventh Generation Fund / Western Shoshone Defense Project	3,000
Shakti Rising	1,300
Shared Interest	10,000
Shasta Community Health Center	55,000
Shasta Consortium of Community Health Centers	55,000
Shipyard Trust for the Arts	10,000
Shirkat Gah - Women's Resource Centre	12,027
Sichuan Xichang Centers for Disease Control	2,000
Sierra Club	20,000
Sierra Club Foundation	132,383
Silicon Valley Toxics Coalition	151,000
Simmons College / Gustavus Myers Center	1,000
SIN-DO	3,000
Siskiyou Family Healthcare Inc.	20,000
Sister Island Project	1,000
Sitka Center for Art and Ecology	13,000
Six Rivers Planned Parenthood	51,637
Siyath Foundation	20,000
Smack Mellon Studios	7,000
Smile Train	3,000
Smith College	5,000
Smith River Alliance	13,500
Smith River Alliance / Tolowa Dunes Stewards	4,000
SOAR Foundation	2,000
SOC Education Fund / Southern Organizing Committee for Economic and Social Justice	75
SOC International	10,000
Social Justice Center of Albany	5,000
Social Justice Fund Northwest	72,000
Social Venture Partners	15,000
Society for Education Village Action and Improvement	24,000
Society for Women Integrated Family Development	5,000
Society Free Culture	10,000
Society of Women of Azerbaijan for Peace and Democracy for Transcaucasus	2,320
Socrates Sculpture Park	10,000
Solano Community Foundation	250
Solar Cookers International	500
Solar Electric Light Fund	1,350
Solar Energy International	20,000
Solar Light for Africa, LLC	5,000
Solidaritas Perempuan	25,000
Sonoma Land Trust	1,000
Sonoma Valley Community Health Center	50,000
Sonoran Institute	1,235,000
South Asian Research and Development Initiative / Dr. J P Labour Welfare Education and Research Foundation	5,000
South Asian Research and Development Initiative / Orissa Kendupatra Karmachari Sangh	20,000
South Asian Research and Development Initiative / West Bengal Cha Mazdoor Sabha	20,000
South Bay Family Healthcare Center	50,000
South Central Family Health Center	50,000
South Dakota Peace and Justice Center	789
South India Positive Network	6,888
South Whidbey Commons	4,000
South Whidbey Youth Center	200
Southeast Alaska Conservation Council	5,000
Southern Environmental Law Center	2,000
Southern Exposure	15,000
Southern Indian Health Council, Inc	50,000
Southern Mutual Help Association, Inc.	20,000
Southern Partners Fund	28,881
Southern Trinity Health Services	36,000
Southwest Community Health Center	250,000
Southwest Cultural Preservation Project / SAGE Council	7,500
Southwest Research and Information Center	3,000
Southwest Research and Information Center / Eastern Navajo Dine Against Uranium Mining	5,000

Southwest Voter Registration Education Project	35,844
SPARSHA	8,860
Special Services for Groups / Satrang	28,500
Spirit in Action	62,500
St. Francis Health Care Services	10,107
St. John's Educational Thresholds Center	40,000
St. John's Well Child and Family Center	45,000
St. Luke's and Roosevelt Hospitals	2,500
St. Martin's Hospitality Center	1,500
St. Vladimir's Orthodox Theological Seminary	1,000
Stand for Children	7,500
Standing Rock Sioux Tribe	5,000
Stichting European Archive	154,000
Stichting Mamio Namen Project	12,600
Stichting Ontmoeting met Buitenlandse Vrouwen	15,500
Stichting VluchtelingenWerk Rijswijk	3,200
Stiftung Bergwaldprojekt	3,000
Stowarzyszenie Wspolpracy Kobiet, NEWW Polska	5,000
Students for a Sensible Drug Policy Foundation	20,000
Studio in a School Association	125,000
Sugar Bowl Ski Team Foundation	300
Sunrise Center	12,500
Support Center for Child Advocates	2,500
Surfrider Foundation Europe	10,000
Suriya Women's Development Centre	5,000
Survival International	2,000
Svecha	61,000
Swarthmore College	1,000
Sweatshop Watch	21,082
Swinomish Indian Tribal Community	3,000
Sylvia Rivera Law Project	2,500
Synergos Institute	39,000
Synergy School	12,500
Tall Timbers Research	13,500
Taller de Artes y Oficios Polvo de Agua, A C.	2,000
Tanzania Network of Organisations of People Living with HIV/AIDS	57,590
Tara Mandala	15,000
Tashi Choling	5,000
Taxpayers for Common Sense	20,000
Team-Up for Youth	500
Telos Project / Turtle Island Films	11,000
Tenants' and Workers' Support Committee	25,000
Tender Loving Care	15,000
Tennessee Parks and Greenways Foundation	250
Terrawatu	12,165
Texas Death Penalty Education and Resource Center / Texas Moratorium Network	4,000
Thai Community Development Center	200,000
Thai Community Development Center / Thai Health Network	26,000
The Academy for Jewish Religion, California	1,800
The Arc of King County	6,000
The Bay Institute of San Francisco	11,000
The Bell Policy Center	500
The Bravewell Collaborative	34,000
The Century Foundation	500
The Children's Clinic	50,000
The Chinese Working Women's Network	60,000
The Circle One Planet, One People, One Life	500
The Community Abortion Information and Resources Project	2,500
The Crowden School	50,000
The Defender Association	40,000
The Diversity Center	20,000
The Elephant Sanctuary	1,800
The Enterprise Center	25,000
The Field	80,000
The Hopl Foundation	100,000
The ICA Group	50,000
The Institute for Urban Family Health	15,000
The International Alliance for Women	2,880
The Jewish Community Center in Manhattan	78,900
The Just Media Fund	600,000
The Kids League Uganda	17,000
The Kitchen	8,750
The Koda Foundation / Dakota Thunder	2,500
The Land/an art site / Citizens for Alternatives to Radioactive Dumping	5,000
The Leukemia & Lymphoma Society	500
The Mass Media Project	50,000
The Moratorium Campaign / Maryland Citizens Against State Executions	30,000
The Mountain Institute	350,000
The Movements Platform	6,000
The National Academies	10,000
The Nature Conservancy of Hawaii	1,500
The New World Foundation	10,000
The New World Foundation / Alston/Bannerman Fellowship Program	10,000
The New World Foundation / Rye Collaborative	5,000
The New York Dzogchen Community	2,000
The Ordinary People Society	9,375
The Parenting Project	250
The Partnership Project	100,000
The Performance Project / Springfield User's Council	33,500
The Point Foundation	21,000
The Power of Hope	14,080
The Riley Center of St. Vincent de Paul Society	3,188

The Ruckus Society	20,000
The Sentencing Project	126,007
The Sentencing Project / Real Cost of Prisons Project	10,000
The Shefa Fund	11,008
The Siloe Project	2,500
The Tamarind Foundation	1,000
The Theater Offensive	21,000
The Virginia League for Planned Parenthood	189
The Washington Opera	125,000
The Wilderness Society	1,000
The Women's Building	9,000
The Z Space Studio	7,000
Third Sector New England / Resource Generation	20,000
Third Wave Foundation	25,500
This Land Is Mine Russian & Ethiopian Olim Fund	900
Thomas Berry Foundation / Center for Environment and Society	300,000
Thomas Berry Foundation / Renewal	156,953
Threshold Foundation	102,900
Tibetan Nuns Project	13,059
Tiburcio Vasquez Health Center	40,000
Tides Canada Foundation	140,400
Tides Center	1,500,000
Tides Center / Asia Pacific Environmental Exchange	1,500
Tides Center / Center for Genetics and Society	10,000
Tides Center / Center for Social Inclusion	70,000
Tides Center / Clean Production Action	300,000
Tides Center / CorpWatch	21,403
Tides Center / dropping knowledge	284,000
Tides Center / EMPower The Emerging Markets Foundation	1,500
Tides Center / Environmental Defender Law Center	15,000
Tides Center / Global Community Monitor	10,000
Tides Center / Grantmakers Without Borders	12,500
Tides Center / Greenaction	2,500
Tides Center / Hate Free Zone Campaign of Washington State	6,803
Tides Center / Husbandry Institute	2,500
Tides Center / Institute for Children's Environmental Health	1,000
Tides Center / Kuthal Institute	11,000
Tides Center / Lafayette School Mentoring Project	180,000
Tides Center / National Asian Pacific American Women's Forum	30,000
Tides Center / New Story Project	40,000
Tides Center / OASIS (Offering Arts to our Sisters In SOMA)	40,000
Tides Center / Opportunity Agenda	110,000
Tides Center / ORIGINS	10,000
Tides Center / Out of Site	15,000
Tides Center / Partners Ending Domestic Abuse	2,400
Tides Center / Peaceful Tomorrows	50,000
Tides Center / People to Protect the Constitution	497,475
Tides Center / Rockridge Institute	500
Tides Center / sf LEARNS	45,000
Tides Center / Shalom Bayit	3,188
Tides Center / Social Venture Network	1,600
Tides Center / The Beatitudes Society	75,000
Tides Center / The Regeneration Project	2,500
Tides Center / Verde Partnership Garden Coalition	6,500
Tides Center / Virtual March on Washington to Stop Global Warming	200,000
Tides Center / Visual Arts/Language Arts. A Project for Kids in the Public Schools	7,500
Tides Center / Women's Leadership Circles	82,918
Tides Center / Women's Rights International	30,000
Tides Center / Young Women United for Oakland	8,000
Tides, Inc.	157,760
Topeka AIDS Project	53,148
Town Hall Coalition	5,000
Townsville Diocese	20,000
Tracking Project	2,000
Traditional and Modern Health Practitioners Together Against AIDS	29,502
TransFair USA	1,000
Transgender Law Center	5,000
Transparency International USA	1,000
Transport Group / First Fig Productions	6,000
Treatment Action Campaign / Pan African Treatment Access Movement	27,000
Treatment Action Group	1,000
Treepeople, Inc.	10,000
Trees Foundation / California Wilderness Legacy Project	4,066
Trees Foundation / Mendocino Earth First!	2,500
Trees Foundation / North Coast Earth First! Media	2,500
Trevor Project	2,500
Tri-City Health Center	40,000
Trickle Up Program	30,000
Tri-Rivers Planned Parenthood	182
Truckee Tahoe Community Foundation	10,000
TrueMajority Action	5,000
Tulare County Hispanic Commission	30,000
Tvoi Vybor	9,613
Twenty First Century Foundation	25,000
Twin Streams Educational Center / North Carolina Peace and Justice Coalition	800
UAHC Camp Swig - Institute	500
Ubuntu Education Fund	25,000
UCLA Foundation / The Charles R. Williams Project on Sexual Orientation Law and Public Policy	1,000
UCLA School of Medicine	296,928
Udmurtia-AntiAIDS	10,000
Uganda Youth Development Link	15,607
Uganda Youth Empowerment Scheme	10,329

UMMA Community Clinic	50,000
Underdog Foundation	60,000
Unidad de Capacitación e Investigación Educativa para la Participación, A.C.	10,000
Union de Beneficios en Educacion y Colaboracion Internacional	7,025
Union of Concerned Scientists	17,750
United Church of Christ - First Congregational Church of San Rafael	4,300
United Development Programme Uzbekistan / Ishonch	10,000
United Farm Workers of America	2,500
United for a Fair Economy	92,525
United Health Centers of the San Joaquin Valley	40,000
United Indian Health Services	50,000
United Nations Association of the United States of America	1,000
United Nations Development Programme / Tals Plus	13,000
United Religions Initiative	25,000
United Tribes Technical College	5,000
United Way of the Bay Area	1,500
Unitus Inc.	49,939
University of New Mexico School of Medicine	5,000
University of North Carolina at Asheville Foundation	5,000
University of Utah	555,000
University of Washington Foundation / Seattle MESA	25,000
Univerzita Karlova v Praze	8,019
UNOPA	19,900
Upaya Zen Center	3,580
Upper Hudson Planned Parenthood, Inc	388
Upwardly Global	25,000
Urbana-Champaign Independent Media Center	2,544
Urgent Action Fund for Women's Human Rights	20,000
Urgent Action Fund for Women's Human Rights Africa	10,000
US Action Education Fund	125,000
USAction	77,500
Utah State University	5,000
Vacha Charitable Trust	19,820
Valhalla Wilderness Society	8,000
Valley Community Clinic	50,000
Vancouver Folk Music Festival	700
Vanderbilt University	650
Vanguard Public Foundation	32,500
Vanguard Public Foundation / Quality Public School Education as a Civil Right	30,000
Venice Family Clinic	22,751
Ventura County Rainbow Alliance	10,000
Vermont Harm Reduction Coalition	20,000
Vermont Law School	3,000
Vidhayak Sansad	20,000
Vietnam Community Mobilization Centre for HIV/AIDS Control	10,000
Vietnam Veterans of America Foundation	500
Vietnamese Youth Development Center	40,000
Virginia Organizing Project / Virginians for Alternatives to the Death Penalty	4,000
Vithey Chivit	10,000
Vithey Chivit / KANHNHA	10,000
Viva Rio	17,000
Volunteers for Development in Philippine Society Foundation, Inc	27,546
Volunteers in Asia	1,000
Waldorf School Association of Boulder	1,000
WAND Education Fund	20,000
Warehouse 21 Teen Arts Center	1,000
Washington Buddhist Vihara	500
Washington Conservation Voters	1,000
Washington Institute for Near East Policy	10,000
Washington Office on Latin America	40,000
Washington Physicians for Social Responsibility	250
Washington Wildlife and Recreation Foundation	150
Washington Women's Foundation	2,300
Waterkeeper Alliance	25,000
Welfare Law Center	5,000
Wellstone Action Fund	5,000
Wellstone Action Fund / Wellstone Memorial & Historical Site Foundation	5,000
West Africa Network for Peacebuilding	70,000
West Bluffs Conservancy	1,000
West County Health Centers	38,000
West Oakland Health Council	40,000
West Side Hatzolah	1,000
Western New York Peace Center	1,500
Western Organization of Resource Councils	15,000
Western Organization of Resource Councils Education Project	20,000
Western Resource Advocates	10,000
Western Resource Advocates / Rocky Mountain Energy Campaign	70,000
Western States Legal Foundation	2,500
Westmont College	15,000
Westside Family Health Center	50,000
WFUV 90.7 FM	6,000
Whidbey Camano Land Trust	100
Whidbey Institute	2,500
Whidbey Island Center for the Arts	100
White Earth Land Recovery Project	57,600
WildAid	26,244
Wildcat Service Corporation	2,500
Wilderness Watch	23,036
Wildlands Project	5,000
Wildlife Conservation Society / Lalkipia Predator Project	12,000
Willamette Valley Law Project / Pinaros y Campesinos Unidos del Noroeste	5,000
William J. Clinton Presidential Foundation / Bush-Clinton Katrina Fund	10,000

William James Association / San Lorenzo River Restoration Institute	3,000
Wilmington Community Clinic	10,000
Winter Center For Indigenous Traditions	3,000
Witness	23,811
Witness for Peace	17,000
WNYC Radio	7,500
Wolakota Foundation	6,000
WOMANKIND Worldwide	80,000
Women and Philanthropy	2,500
Women Donors Network	96,400
Women for Women International	11,000
Women in Black	6,470
Women Living Under Muslim Laws	19,000
Women Make Movies / Exhibit A Films	250,000
Women of Color Resource Center	2,000
Women on Waves	50,000
Women Organized To Make Abuse Nonexistent	3,188
Women's Edge Coalition	10,000
Women's Education for Advancement and Empowerment	25,000
Women's Education, Development Productivity Research & Advocacy Org	5,000
Women's Educational Media	2,500
Women's Empowerment Network	5,000
Women's Foundation of California	10,000
Women's Funding Alliance	30,000
Women's Funding Network	175,000
Women's Initiative for Self Employment	17,500
Women's Leadership Fund	500
Women's Learning Partnership for Rights Development and Peace	100,000
Women's Legal Bureau, Inc.	5,000
Women's Link Worldwide	5,000
Women's Network for Unity	10,000
Women's Voices. Women's Vote	250,000
Women's Voices. Women's Vote Action Fund	10,000
Women's Way	2,500
Women's Wellness Center	5,000
Working Films	620,000
Working for Good Jobs in America Fund	250,000
World Education	37,560
World Education / Cambodian Living Arts	10,000
World Neighbors	35,000
World Organization for Human Rights USA	3,000
World Security Institute	500
World Trust Educational Services, Inc.	10,000
Worldwatch Institute	5,000
Wounded Knee District School / Owe Aku	4,000
Wyck	5,000
Xa Ko S C.	13,000
Xinjiang Uyghur Autonomous Region Red Cross Branch	10,000
Yale University	318,575
Yayasan Harapan Permata Hati Kita	12,500
Yayasan Indonesian Development of Education and Permaculture Foundation	138,859
Yayasan Kesehatan Burnet Indonesia	20,000
Yayasan Pelita Ilmu	10,000
Yerba Buena Center for the Arts	10,000
YIVO Institute for Jewish Research	2,000
YMCA Youth and Government	2,500
Young Community Developers	45,000
Young Men's and Young Women's Hebrew Association	10,000
Young Scholars Program	35,000
Youth Arts Collective	5,000
Youth at Risk	5,000
Youth Expressions, Inc. / Not Just Hype	1,500
Youth for Environmental Sanity	2,000
Youth for Environmental Sanity / Native Movement	6,500
Youth In Focus	10,000
Youth Speaks	30,000
Youth Tennis Advantage / East Palo Alto Tennis and Tutoring	1,000
Yukon Conservation Society	4,000
Yunnan Daytop Center for Drug Abuse Treatment and Rehabilitation	10,000
Zaccho Dance Theater	10,000
Zentrum fur Umwelt and Kultur	5,000
Zing Foundation	25,000
Grand Total	<u>86,230,568</u>
Prior Year Cancelled Grants	(485,722)
Honoraria	196,631
Adjusted Grants Awarded	<u>85,941,477</u>

2005

Federal Statements

Tides Foundation

51-0198509

Statement 4
Form 990, Part II, Line 43
Other Expenses

	(A) Total	(B) Program Services	(C) Management & General	(D) Fundraising
Allocated overhead	624,121.	542,254.	73,377.	8,490.
Bank charges	201,703.		201,703.	
Board of Directors expenses	11,632.		11,632.	
Consultants	1,531,095.	1,330,258.	198,212.	2,625.
Insurance	28,390.		28,390.	
Investment fees	267,749.		267,749.	
License & fees	8,244.		8,244.	
Membership and dues	47,056.		47,056.	
Office expense	151,798.	131,886.	19,912.	
Other expenses	65,557.	56,958.	8,599.	
Promotion	98,557.	85,629.	12,928.	
Taxes	2,207.		2,207.	
Total	\$ 3,038,109.	\$ 2,146,985.	\$ 880,009.	\$ 11,115.

Statement 5
Form 990, Part IV, Line 57
Land, Buildings, and Equipment

Category	Basis	Accum. Deprec.	Book Value
Furniture and Equipment	\$ 639,169.	\$ 534,903.	\$ 104,266.
Buildings	94,385.	19,766.	74,619.
Improvements	575,041.	167,628.	407,413.
Land	1,153,171.		1,153,171.
Total	\$ 2,461,766.	\$ 722,297.	\$ 1,739,469.

Statement 6
Form 990, Part IV, Line 58
Other Assets

NPV Guarantee Fee Receivable			\$ 571,144.
		Total	\$ 571,144.

Statement 7
Form 990, Part IV, Line 65
Other Liabilities

Guarantee of Indebtedness of Others.			\$ 571,144.
		Total	\$ 571,144.

2005

Federal Statements

Tides Foundation

51-0198509

Statement 8
Form 990, Part IV-A, Line b(4)
Other Amounts

Revenue of Controlled Subsidiary	\$ 49,896.
Revenue of Supporting Organization	718,512.
Total	<u>\$ 768,408.</u>

Statement 9
Form 990, Part IV-B, Line b(4)
Other Amounts

Expenses of Controlled Subsidiary	\$ 4,820.
Expenses of Supporting Organization	374,118.
Total	<u>\$ 378,938.</u>

Statement 10
Form 990, Part V-A
List of Officers, Directors, Trustees, and Key Employees

Name and Address	Title and Average Hours Per Week Devoted	Compen- sation	Contri- bution to EBP & DC	Expense Account/ Other
* Idelisse Malave P.O. Box 29903 San Francisco, CA 94129-0903	COO 40	\$ 159,056.	\$ 12,000.	\$ 0.
Ellen Friedman P.O. Box 29903 San Francisco, CA 94129-0903	Vice President 4	0.	0.	0.
* Lauren Webster P.O. Box 29903 San Francisco, CA 94129-0903	CFO/Ass't Tres 40	126,557.	18,646.	0.
Drummond Pike P.O. Box 29903 San Francisco, CA 94129-0903	President/Dir 18	0.	0.	0.
Melissa Bradley P.O. Box 29903 San Francisco, CA 94129-0903	Secretary/Dir 2	0.	0.	0.
Robin Wolaner P.O. Box 29903 San Francisco, CA 94129-0903	Treasurer/Dir 2	0.	0.	0.
Joseph Perez P.O. Box 29903 San Francisco, CA 94129-0903	Ass't Sec'tary 18	0.	0.	0.

* Compensation as Key Employee,
not as Board Member

2005

Federal Statements

Tides Foundation

51-0198509

Statement 10 (continued)
 Form 990, Part V-A
 List of Officers, Directors, Trustees, and Key Employees

<u>Name and Address</u>	<u>Title and Average Hours Per Week Devoted</u>	<u>Compen- sation</u>	<u>Contri- bution to EBP & DC</u>	<u>Expense Account/ Other</u>
Charles Savitt P.O. Box 29903 San Francisco, CA 94129-0903	Director 2	\$ 0.	\$ 0.	\$ 0.
Wade Rathke P.O. Box 29903 San Francisco, CA 94129-0903	Director 2	0.	0.	0.
Joel Solomon P.O. Box 29903 San Francisco, CA 94129-0903	Director 2	0.	0.	0.
Joanie Bronfman P.O. Box 29903 San Francisco, CA 94129-0903	Director 2	0.	0.	0.
Elouise Cobell P.O. Box 29903 San Francisco, CA 94129-0903	Director 2	0.	0.	0.
john powell (sic) P.O. Box 29903 San Francisco, CA 94129-0903	Director 2	0.	0.	0.
Quinn Delaney P.O. Box 29903 San Francisco, CA 94129-0903	Chair/Director 2	0.	0.	0.
		Total \$ 285,613.	\$ 30,646.	\$ 0.

Statement 11
Form 990, Part V-A, Line 75b
Compensation Paid to Related Individuals

Name and Relationship

Drummond Pike

See the attached Board chart.

Ellen Friedman

See the attached Board chart.

Joseph Perez

See the attached Board chart.

Robin Wolaner

See the attached Board chart.

Wade Rathke

See the attached Board chart.

Joel Solomon

See the attached Board chart.

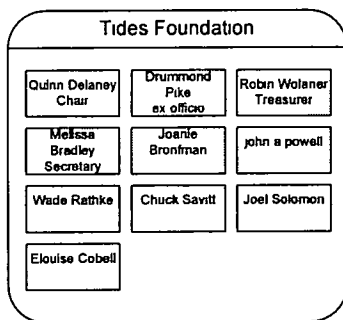
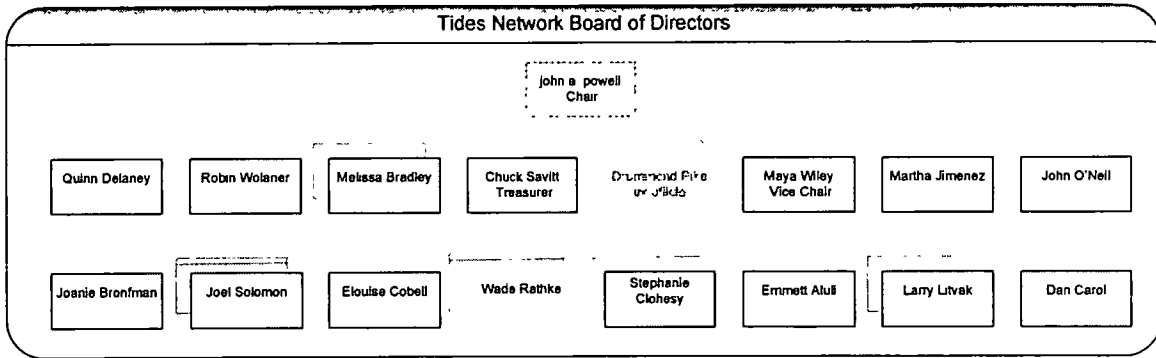
Charles Savitt

See the attached Board chart.

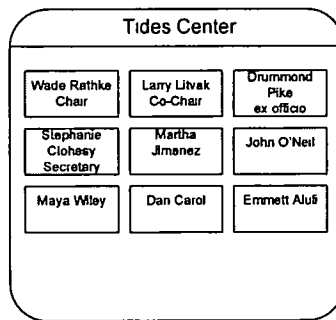
Attached is a Board chart for the various organizations of the Tides Network. Besides the Board overlap among the participants in the Tides Network two of the Board Members of the Tides Foundation (Drummond Pike and Robin Wolaner) are also Board Members of Working Assets Funding Service, Inc. Other Board Members and Officers of the Tides Foundation also serve as Directors of the various supporting organizations listed in the attached statement as assigned by the Foundation in furtherance of their duties to the Foundation. A list of the Boards on which Drummond Pike sits is also attached to this Statement. No other business relationships (other than the compensation matters disclosed in Statement 12) among the Directors, Officers, Key Employees or independent contractors have been disclosed to the Foundation.

Tides Governance Structure

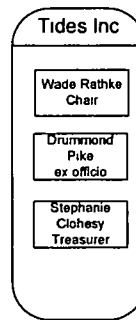
Effective 1/1/2006



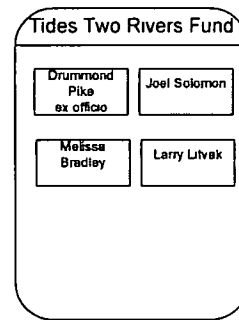
**Philanthropic Services
& Strategies**



Project Services



**Internal Operations &
West Coast Real Estate**



East Coast Real Estate

2005			51-0198509
Tides Foundation			
Organizations where Drummond Pike is an Officer or Member of the Board:			
NAME	ORGANIZATION	DIRECTOR	OFFICER
Drummond Pike	Endswell Foundation (Canada)	Director	
	Farallons Fund		President
	Island Press	Director	
	Nathan M. Ohrbach Foundation	Director	CEO
	Network for Good	Director	
	Sage Center (Canada)	Director	
	Threshold	Director	
	Tides Advocacy Fund	Director	
	Tides Canada	Director	
	Tides Center	Director	CEO
	Tides Center PA	Director	
	Tides Network		CEO
	Tides Two Rivers Fund		CEO
	Tides, Inc.		CEO
	Working Assets Funding Service	Director	

2005		51-0198509
Tides Foundation		
Supporting organizations where other members of the Tides Foundation's Board serve:		
SUPPORTING ORGANIZATION	BOARD OF DIRECTORS	
Ginungagap	Joel Solomon	
Goldman-Sonnenfeldt Foundation	Idelisse Malave	
Heart of America	Drummond Pike	
Heller Family Foundation	Drummond Pike	
Livingry Foundation	Drummond Pike	
New Field Foundation	Ellen Freidman	
Schott Center for Public and Early Education	Idelisse Malave	
Three Guineas	Ellen Freidman	
Tides Two Rivers Fund	Joel Solomon, Drummond Pike, Ellen Friedman	
Underdog Foundation	Drummond Pike, Joel Solomon	
Weithorn-Ehrmann Families Foundation	Drummond Pike	

Statement 12
Form 990, Part V-A, Line 75c
Individuals Compensation By Related Organizations

Drummond Pike

Related Organization:	Tides, Inc
FEIN:	57-113809
Relationship Explanation:	Tides, Inc is a supporting organization to Tides Foundation.
Compensation Paid:	\$ 170,000.
Benefit Plan Contributions:	\$ 31,891.
Expense Account:	\$ 0.
Compensation Arrangement:	Compensation paid by Tides, Inc.
Related Organization:	Working Assets Funding Service
FEIN:	94-2987585
Relationship Explanation:	Member of both Boards.
Compensation Paid:	\$ 7,500.
Benefit Plan Contributions:	\$ 0.
Expense Account:	\$ 0.
Compensation Arrangement:	Compensation paid by Working Assets Funding Service, Inc.

Ellen Friedman

Related Organization:	The Tides Center
FEIN:	94-3213100
Relationship Explanation:	There is Board overlap between Tides Foundation and The Tides Center.
Compensation Paid:	\$ 153,542.
Benefit Plan Contributions:	\$ 22,654.
Expense Account:	\$ 0.
Compensation Arrangement:	Compensation paid entirely by The Tides Center.

Joseph Perez

Related Organization:	Tides, Inc
FEIN:	57-113809
Relationship Explanation:	Tides, Inc is a supporting organization to Tides Foundation.
Compensation Paid:	\$ 51,000.
Benefit Plan Contributions:	\$ 3,455.
Expense Account:	\$ 0.
Compensation Arrangement:	Compensation paid entirely by Tides, Inc.

Robin Wolaner

Related Organization:	Working Assets Funding Service
FEIN:	94-2897578
Relationship Explanation:	Member of both Boards.
Compensation Paid:	\$ 9,000.
Benefit Plan Contributions:	\$ 0.
Expense Account:	\$ 0.
Compensation Arrangement:	Compensation paid by Working Assets Funding Service, Inc.

Wade Rathke

Statement 12 (continued)
Form 990, Part V-A, Line 75c
Individuals Compensation By Related Organizations

Related Organization: Chief Organizer Fund
FEIN:
Relationship Explanation:
Compensation Paid:
Benefit Plan Contributions: Not Provided
Expense Account:
Compensation Arrangement:

Joel Solomon

Related Organization: Village Realty
FEIN:
Relationship Explanation:
Compensation Paid:
Benefit Plan Contributions: Not Provided
Expense Account:
Compensation Arrangement:

Charles Savitt

Related Organization: Island Press
FEIN:
Relationship Explanation:
Compensation Paid:
Benefit Plan Contributions: Not Provided
Expense Account:
Compensation Arrangement:

2005

Federal Statements

Tides Foundation

51-0198509

Statement 13
Form 990, Part VI, Line 80b
Related Organizations

<u>Name of Organization</u>	<u>Exempt</u>	<u>Nonexempt</u>
Driscoll Family Foundation	X	
Ehrmann & Weithorn Families Foundation	X	
Farallons Fund	X	
Ginungagap	X	
Goldman-Sonnenfeldt Foundation	X	
groundspring.org	X	
Heller Family Foundation	X	
Highwater, Inc.		X
Kreitzberg Family Foundation	X	
Livingry Foundation	X	
New Field Foundation	X	
Ozymandias Foundation	X	
Rouhana Family Foundation	X	
Schott Ctr for Public & Early Education	X	
The Tides Center	X	
Three Guineas Fund	X	
Tides Two Rivers Fund	X	
Tides, Inc.	X	
Tsunami Fund	X	
Underdog Foundation	X	

2005

Federal Statements

Tides Foundation

51-0198509

Statement 14
Form 990, Part VII, Line 103
Other Revenue

Other Revenue	(A) Busi- ness Code	(B) Unrelated Business Amount	(C) Exclu- sion Code	(D) Excluded Amount	(E) Related or Exempt Function
Bond Guarantee					\$ 61,992.
Conference Fees					67,423.
Inc PRI			14	\$ 14,043.	
Membership Fees					151,031.
Miscellaneous					10,142.
Total		\$ 0.		\$ 14,043.	\$ 290,588.

Statement 15
Form 990, Part VIII
Relationship of Activities to the Accomplishment of Exempt Purposes

Line #	Explanation of Activities
93(a)	Management administration fees from charitable advisories and other related services.
103	\$61,992: Reimbursement of Bond Guarantee Fee paid on behalf of a related not-for-profit organization.
	\$67,423: Revenue generated by Conference Fees.
	\$14,043: Partnership income from a Mission Related Investment.
	\$151,031: Annual fees for foundations sharing information on technology ideas and solutions.
	\$10,142: Miscellaneous administration fees.

Statement 16
Schedule A, Part I
Compensation of Five Highest Paid Employees

Name and Address	Title & Average Hours Worked	Compen- sation	Contributio EBP & DC	Expense Account
Gary Schwartz, 40 Exchange Pl Director of New York Office New York, NY 10005	See Column a 40	126,651.	16,164.	0.
Tod Hill, PO Box 29903 Director of Philanthropic Svcs San Francisco, CA 94129	See Column a 40	121,556.	9,113.	0.

2005

Federal Statements

Tides Foundation

51-0198509

Statement 16 (continued)
 Schedule A, Part I
 Compensation of Five Highest Paid Employees

Name and Address	Title & Average Hours Worked	Compensation	Contribution EBP & DC	Expense Account
Sarah Hobson, PO Box 29903 Program Director San Francisco, CA 94129	See Column a 40	108,675.	17,107.	0.
Chris Herrera, PO Box 29903 Director of Communications San Francisco, CA 94129	See Column a 40	101,557.	11,357.	0.
Randall Miller, PO Box Assoc Director of Philanthropic Svc San Francisco, CA 94129	See Column a 40	99,057.	4,594.	0.
		Total \$ 557,496.	\$ 58,335.	\$ 0.

Statement 17
 Schedule A, Part VII, Line 51d
 Transaction/Relationships with Noncharitable Exempt Organizations

(a) Line No.	(b) Amount Involved	(c) Name of Noncharitable Exempt Organization	(d) Description of Transfers, Transactions, and Sharing Arrangements
a(i)	10,000.	Conservation Voters - NM	Program Grants*
a(i)	10,000.	Northeast Action Campgn	Program Grants*
a(i)	10,000.	Planned Parenthd of CA	Program Grants*
a(i)	10,000.	Progressive Gov't Project	Program Grants*
a(i)	10,000.	Women's Voices-Votes Act	Program Grants*
a(i)	100,000.	Fed of St Cons Vt Leags	Program Grants*
a(i)	110,000.	Reform Ohio Now	Program Grants*
a(i)	15,000.	Clean Water Action	Program Grants*
a(i)	15,000.	Public Campn Act Fd	Program Grants*
a(i)	15,000.	Western Org of Resource C	Program Grants*
a(i)	20,000.	Alabama Coalition on BCP	Program Grants*
a(i)	20,000.	Citizens for Tax Justice	Program Grants*
a(i)	20,000.	Sierra Club	Program Grants*
a(i)	20,800.	Nat'l Assn Crim Def Law	Program Grants*
a(i)	25,000.	Ballot Init Stgy Ctr	Program Grants*
a(i)	25,000.	Ctr Reproductive Rgts	Program Grants*
a(i)	27,500.	Cmpn for America's Future	Program Grants*
a(i)	35,000.	Religious Coal for Repr	Program Grants*
a(i)	35,300.	NC Citizens for Justice	Program Grants*
a(i)	36,500.	League of Ind Voters	Program Grants*
a(i)	38,000.	Am Progress Act Fd	Program Grants*
a(i)	45,000.	New Democratic Network	Program Grants*
a(i)	5,000.	ACLU of Montana	Program Grants*
a(i)	5,000.	Media Matters Act Network	Program Grants*
a(i)	5,000.	PowerPAC.org	Program Grants*
a(i)	5,000.	TrueMajority Action	Program Grants*
a(i)	50,000.	ACLU of FL	Program Grants*
a(i)	50,000.	Campgn for Community Chg	Program Grants*
a(i)	50,434.	People for the Amer Way	Program Grants*
a(i)	54,625.	ACLU of Texas	Program Grants*
a(i)	60,000.	Alliance for Justice Act	Program Grants*

2005

Federal Statements

Tides Foundation

51-0198509

Statement 17 (continued)
 Schedule A, Part VII, Line 51d
 Transaction/Relationships with Noncharitable Exempt Organizations

(a) Line No.	(b) Amount Involved	(c) Name of Noncharitable Exempt Organization	(d) Description of Transfers, Transactions, and Sharing Arrangements
a(i)	7,500.	Stand for Children	Program Grants*
a(i)	7,610.	Planned Parenthood KS-MO	Program Grants*
a(i)	80,000.	League of Consvn Vtr	Program Grants*
a(i)	80,000.	US Action	Program Grants*
Total	1,113,269		

* Some of these transactions are lobbying grants that are also included in the amount reported on Form 990, Schedule A, Part III, Line 1.

Total grants made to exempt non-501(c)(3) organizations were \$1,113,269 . Of this amount \$720,081 were grants made for lobbying and \$393,188 were grants made for charitable, education, environmental and social justice purposes.

Tides Foundation

Statement 18**Form 990, Part IV Other Information, Question 90a****States Where Filed**

Alabama
Alaska
Arizona
Arkansas
California
Connecticut
DC
Florida
Georgia
Illinois
Kansas
Kentucky
Maine
Maryland
Massachusetts
Michigan
Minnesota
Mississippi
New Hampshire
New Jersey
New Mexico
New York
N. Carolina
N. Dakota
Ohio
Oklahoma
Oregon
Pennsylvania
Rhode Island
S. Carolina
Tennessee
Utah
Virginia
W. Virginia
Washington
Wisconsin

2005

Federal Supporting Detail

Tides Foundation

51-0198509

Balance Sheet - Beginning of Year
Other notes and loans receivable

Statement 19

American Consumer Insurance Agency	\$ 12,000.
PPEP/Micro	20,000.
Arkansas Institute for Social Justice	20,056.
Groundspring.org	20,000.
Dads and Daughters	200,000.
New York Leadership	250,000.
Pura Vida Coffee, LLC	200,000.
Total	<u>\$ 722,056.</u>

Balance Sheet - Beginning of Year
Securities

Statement 20

Equity Securities	\$ 44,755,409.
Money Market and Fixed Income Securities	91,359,139.
Global Environment Fund & Other Equities	1,866,140.
Non-Market Traded Securities	39,605.
Total	<u>\$ 138,020,293.</u>

Balance Sheet - Beginning of Year
Other

Statement 21

Mission Related Investments	\$ 228,067.
-- Less Allowance for Doubtful Accts	-220,803.
Interest Receivable	500,504.
Artwork	375,000.
Artwork	8,660.
Investment in Highwater	1,954.
Total	<u>\$ 893,382.</u>

Balance Sheet - Beginning of Year
Mortgages and other notes payable

Statement 22

Moffitt	\$ 250,000.
Total	<u>\$ 250,000.</u>

Balance Sheet - End of Year
Other notes and loans receivable

Statement 23

American Consumer Insurance Agency	\$ 12,000.
PPEP/Micro	20,000.
Arkansas Institute for Social Justice	17,756.
Dads and Daughters	200,000.
Tides Two Rivers	12,400,000.
Total	<u>\$ 12,649,756.</u>

2005

Federal Supporting Detail

Tides Foundation

51-0198509

Balance Sheet - End of Year
Securities

Statement 24

Equity Securities	\$ 43,033,839.
Money Market and Fixed Income Securities	97,019,744.
Global Environment Fund & Other Equities	1,335,904.
Non-Market Traded Securities	39,605.
Total	<u>\$ 141,429,092.</u>

Balance Sheet - End of Year
Other

Statement 25

Interest Receivable	\$ 706,777.
Mission Related investments	939,585.
-- Less Allowance for Doubtful Accts	-220,094.
Artwork	375,000.
Artwork	8,660.
Goldman Sachs Real Estate Fd	244,411.
Goldman Family LP	673,670.
Total	<u>\$ 2,728,009.</u>

Balance Sheet - End of Year
Mortgages and other notes payable

Statement 26

Moffitt	\$ 250,000.
Wells Fargo	10,800,000.
Total	<u>\$ 11,050,000.</u>

Application for Extension of Time to File an Exempt Organization Return

Department of the Treasury
Internal Revenue Service

▶ File a separate application for each return

- If you are filing for an **Automatic 3-Month Extension**, complete only **Part I** and check this box
- If you are filing for an **Additional (not automatic) 3-Month Extension**, complete only **Part II** (on page 2 of this form).

Do not complete Part II unless you have already been granted an automatic 3-month extension on a previously filed Form 8868.

Part I Automatic 3-Month Extension of Time – Only submit original (no copies needed)

Form 990-T corporations requesting an automatic 6-month extension – check this box and complete Part I only

All other corporations (including Form 990-C filers) must use Form 7004 to request an extension of time to file income tax returns. Partnerships, REMICs and trusts must use Form 8736 to request an extension of time to file Form 1065, 1066, or 1041

Electronic Filing (e-file). Form 8868 can be filed electronically if you want a 3-month automatic extension of time to file one of the returns noted below (6-months for corporate Form 990-T filers). However, you cannot file it electronically if you want the additional (not automatic) 3-month extension, instead you must submit the fully completed signed page 2 (Part II) of Form 8868. For more details on the electronic filing of this form, visit www.irs.gov/efile.

Type or print File by the due date for filing your return. See instructions.	Name of Exempt Organization Tides Foundation	Employer identification number 51-0198509
	Number, street, and room or suite number. If a P O box, see instructions PO Box 29903	
	City, town or post office. For a foreign address, see instructions San Francisco, CA 94129-0903	state ZIP code

Check type of return to be filed (file a separate application for each return).

<input checked="" type="checkbox"/> Form 990	<input type="checkbox"/> Form 990-T (corporation)	<input type="checkbox"/> Form 4720
<input type="checkbox"/> Form 990-BL	<input type="checkbox"/> Form 990-T (section 401(a) or 408(a) trust)	<input type="checkbox"/> Form 5227
<input type="checkbox"/> Form 990-EZ	<input type="checkbox"/> Form 990-T (trust other than above)	<input type="checkbox"/> Form 6069
<input type="checkbox"/> Form 990-PF	<input type="checkbox"/> Form 1041-A	<input type="checkbox"/> Form 8870

• The books are in the care of ▶ Drummond Pike

Telephone No ▶ (415) 561-6400 FAX No. ▶ _____

- If the organization does **not** have an office or place of business in the United States, check this box
- If this is for a **Group Return**, enter the organization's four digit Group Exemption Number (GEN) _____. If this is for the **whole** group, check this box . If it is for part of the group, check this box and attach a list with the names and EINs of all members the extension will cover.

1 I request an automatic 3-month (6-months for a **Form 990-T corporation**) extension of time until 8/15, 2006, to file the exempt organization return for the organization named above. The extension is for the organization's return for

▶ calendar year 2005 or

▶ tax year beginning _____, 20____, and ending _____, 20____.

2 If this tax year is for less than 12 months, check reason. Initial return Final return Change in accounting period

3a If this application is for Form 990-BL, 990-PF, 990-T, 4720, or 6069, enter the tentative tax, less any nonrefundable credits. See instructions \$ _____ 0.

b If this application is for Form 990-PF or 990-T, enter any refundable credits and estimated tax payments made. Include any prior year overpayment allowed as a credit \$ _____ 0.

c **Balance Due.** Subtract line 3b from line 3a. Include your payment with this form, or, if required, deposit with FTD coupon or, if required, by using EFTPS (Electronic Federal Tax Payment System). See instructions \$ _____ 0.

Caution. If you are going to make an electronic fund withdrawal with this Form 8868, see Form 8453-EO and Form 8879-EO for payment instructions.

BAA For Privacy Act and Paperwork Reduction Act Notice, see instructions.

Form **8868** (Rev 12-2004)