

Return of Organization Exempt From Income Tax

2006

Under section 501(c), 527, or 4947(a)(1) of the Internal Revenue Code (except black lung benefit trust or private foundation)

Open to Public Inspection

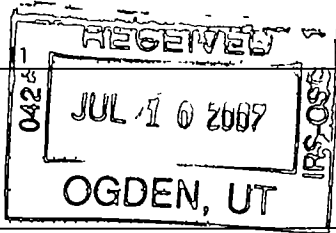
Department of the Treasury Internal Revenue Service

The organization may have to use a copy of this return to satisfy state reporting requirements.

Header section containing organization name (Tides Foundation), address, EIN (51-0198509), and telephone number (415-561-6400).

Part I Revenue, Expenses, and Changes in Net Assets or Fund Balances (See the instructions.)

Main table with 21 rows detailing revenue (Total: 77,823,787) and expenses (Total: 76,109,517), resulting in a net asset increase of 1,714,270.



SCANNED AUG 3 2007

Handwritten number 91710

**Part II Statement of Functional Expenses** All organizations must complete column (A) Columns (B), (C), and (D) are required for section 501(c)(3) and (4) organizations and section 4947(a)(1) nonexempt charitable trusts but optional for others.

Do not include amounts reported on line 6b, 8b, 9b, 10b, or 16 of Part I.	(A) Total	(B) Program services	(C) Management and general	(D) Fundraising
<b>22a</b> Grants paid from donor advised funds (attach sch) See Stmt 3 (cash \$ 46121608. non-cash \$ _____) If this amount includes foreign grants, check here <input checked="" type="checkbox"/>	<b>22a</b> 46,121,608.	46,121,608.		
<b>22b</b> Other grants and allocations (att sch) See Stmt 4 (cash \$ 21198016. non-cash \$ _____) If this amount includes foreign grants, check here <input checked="" type="checkbox"/>	<b>22b</b> 21,198,016.	21,198,016.		
<b>23</b> Specific assistance to individuals (attach schedule)	<b>23</b>			
<b>24</b> Benefits paid to or for members (attach schedule)	<b>24</b>			
<b>25a</b> Compensation of current officers, directors, key employees, etc listed in Part V-A (attach sch)	<b>25a</b> 283,124.	226,499.	56,625.	0.
<b>b</b> Compensation of former officers, directors, key employees, etc listed in Part V-B (attach sch)	<b>25b</b> 0.	0.	0.	0.
<b>c</b> Compensation and other distributions, not included above, to disqualified persons (as defined under section 4958(f)(1)) and persons described in section 4958(c)(3)(B) (attach schedule)	<b>25c</b> 0.	0.	0.	0.
<b>26</b> Salaries and wages of employees not included on lines 25a, b, and c	<b>26</b> 2,294,102.	2,013,706.	273,903.	6,493.
<b>27</b> Pension plan contributions not included on lines 25a, b, and c	<b>27</b> 77,434.	67,970.	9,464.	
<b>28</b> Employee benefits not included on lines 25a - 27	<b>28</b> 370,205.	324,957.	43,690.	1,558.
<b>29</b> Payroll taxes	<b>29</b> 194,289.	170,542.	23,747.	
<b>30</b> Professional fundraising fees	<b>30</b>			
<b>31</b> Accounting fees	<b>31</b> 86,390.		86,390.	
<b>32</b> Legal fees	<b>32</b> 149,881.	131,562.	18,319.	
<b>33</b> Supplies	<b>33</b> 65,679.	57,651.	8,028.	
<b>34</b> Telephone	<b>34</b> 59,827.	52,515.	7,312.	
<b>35</b> Postage and shipping	<b>35</b> 30,289.	26,587.	3,702.	
<b>36</b> Occupancy	<b>36</b> 193,568.	169,909.	23,659.	
<b>37</b> Equipment rental and maintenance	<b>37</b> 52,158.	45,783.	6,375.	
<b>38</b> Printing and publications	<b>38</b> 131,568.	115,487.	16,081.	
<b>39</b> Travel	<b>39</b> 394,285.	346,094.	48,191.	
<b>40</b> Conferences, conventions, and meetings	<b>40</b> 231,750.	203,424.	28,326.	
<b>41</b> Interest	<b>41</b> 794,519.		794,519.	
<b>42</b> Depreciation, depletion, etc (attach schedule)	<b>42</b> 107,144.	94,048.	13,096.	
<b>43</b> Other expenses not covered above (itemize) a See Statement 5	<b>43a</b> 3,273,681.	2,395,760.	874,131.	3,790.
b -----	<b>43b</b>			
c -----	<b>43c</b>			
d -----	<b>43d</b>			
e -----	<b>43e</b>			
f -----	<b>43f</b>			
g -----	<b>43g</b>			
<b>44</b> Total functional expenses. Add lines 22a through 43g (Organizations completing columns (B) - (D), carry these totals to lines 13 - 15)	<b>44</b> 76,109,517.	73,762,118.	2,335,558.	11,841.

Joint Costs. Check  if you are following SOP 98-2.

Are any joint costs from a combined educational campaign and fundraising solicitation reported in (B) Program services?  Yes  No

If 'Yes,' enter (i) the aggregate amount of these joint costs \$ \_\_\_\_\_; (ii) the amount allocated to Program services \$ \_\_\_\_\_, (iii) the amount allocated to Management and general \$ \_\_\_\_\_; and (iv) the amount allocated to Fundraising \$ \_\_\_\_\_

Part III Statement of Program Service Accomplishments

Form 990 is available for public inspection and, for some people, serves as the primary or sole source of information about a particular organization. How the public perceives an organization in such cases may be determined by the information presented on its return. Therefore, please make sure the return is complete and accurate and fully describes, in Part III, the organization's programs and accomplishments

What is the organization's primary exempt purpose? ▶ <u>Grantmaking</u> All organizations must describe their exempt purpose achievements in a clear and concise manner. State the number of clients served, publications issued, etc. Discuss achievements that are not measurable. (Section 501(c)(3) and (4) organizations and 4947(a)(1) nonexempt charitable trusts must also enter the amount of grants and allocations to others.)	Program Service Expenses (Required for 501(c)(3) and (4) organizations and 4947(a)(1) trusts, but optional for others)
a <u>Grants program: The principal purpose of the Tides Foundation is grantmaking. A complete list of the grantees for the calendar year is provided in Statements 3 and 4.</u> ----- ----- (Grants and allocations \$ 67,319,624. ) If this amount includes foreign grants, check here ▶ <input checked="" type="checkbox"/>	73,762,118.
b ----- ----- ----- (Grants and allocations \$ ) If this amount includes foreign grants, check here ▶ <input type="checkbox"/>	
c ----- ----- ----- (Grants and allocations \$ ) If this amount includes foreign grants, check here ▶ <input type="checkbox"/>	
d ----- ----- ----- (Grants and allocations \$ ) If this amount includes foreign grants, check here ▶ <input type="checkbox"/>	
e Other program services (Grants and allocations \$ ) If this amount includes foreign grants, check here ▶ <input type="checkbox"/>	
<b>f Total of Program Service Expenses</b> (should equal line 44, column (B), Program services) ▶	<b>73,762,118.</b>

BAA

**Part IV Balance Sheets** (See the instructions.)

**Note:** Where required, attached schedules and amounts within the description column should be for end-of-year amounts only.

		(A) Beginning of year		(B) End of year	
ASSETS	45	Cash — non-interest-bearing	1,000.	45	1,000.
	46	Savings and temporary cash investments	3,573,860.	46	3,195,480.
	47a	Accounts receivable	133,619.		
	47b	Less allowance for doubtful accounts		47c	133,619.
	48a	Pledges receivable	1,829,423.		
	48b	Less allowance for doubtful accounts		48c	1,829,423.
	49	Grants receivable		49	
	50a	Receivables from current and former officers, directors, trustees, and key employees (attach schedule)		50a	
	50b	Receivables from other disqualified persons (as defined under section 4958(f)(1)) and persons described in section 4958(c)(3)(B) (attach schedule)		50b	
	51a	Other notes and loans receivable (attach schedule)	14,066,689.		
	51b	Less allowance for doubtful accounts		51c	14,066,689.
	52	Inventories for sale or use		52	
	53	Prepaid expenses and deferred charges	68,105.	53	319,285.
	54a	Investments — publicly-traded securities Stmt 6 <input type="checkbox"/> Cost <input checked="" type="checkbox"/> FMV	141,389,487.	54a	139,947,115.
	54b	Investments — other securities (attach sch) Stmt 7 <input type="checkbox"/> Cost <input checked="" type="checkbox"/> FMV	39,605.	54b	39,605.
	55a	Investments — land, buildings, & equipment basis			
	55b	Less accumulated depreciation (attach schedule)		55c	
	56	Investments — other (attach schedule)	2,728,009.	56	4,557,862.
	57a	Land, buildings, and equipment basis	1,965,190.		
57b	Less accumulated depreciation (attach schedule) Statement 8	603,342.	57c	1,361,848.	
58	Other assets, including program-related investments (describe ▶ See Statement 9 )	571,144.	58	577,741.	
59	<b>Total assets</b> (must equal line 74). Add lines 45 through 58	163,559,005.	59	166,029,667.	
LIABILITIES	60	Accounts payable and accrued expenses	891,144.	60	925,863.
	61	Grants payable	14,003,589.	61	10,359,097.
	62	Deferred revenue		62	
	63	Loans from officers, directors, trustees, and key employees (attach schedule)		63	
	64a	Tax-exempt bond liabilities (attach schedule)		64a	
	64b	Mortgages and other notes payable (attach schedule) Stmts 28 & 31	11,050,000.	64b	12,200,000.
	65	Other liabilities (describe ▶ See Statement 10 )	571,144.	65	537,351.
66	<b>Total liabilities.</b> Add lines 60 through 65	26,515,877.	66	24,022,311.	
NET ASSETS OR FUND BALANCES	Organizations that follow SFAS 117, check here <input checked="" type="checkbox"/> and complete lines 67 through 69 and lines 73 and 74.				
	67	Unrestricted	134,216,350.	67	141,297,302.
	68	Temporarily restricted	2,826,778.	68	710,054.
	69	Permanently restricted		69	
	Organizations that do not follow SFAS 117, check here <input type="checkbox"/> and complete lines 70 through 74.				
	70	Capital stock, trust principal, or current funds		70	
	71	Paid-in or capital surplus, or land, building, and equipment fund		71	
	72	Retained earnings, endowment, accumulated income, or other funds		72	
73	<b>Total net assets or fund balances.</b> Add lines 67 through 69 or lines 70 through 72. (Column (A) must equal line 19 and column (B) must equal line 21)	137,043,128.	73	142,007,356.	
74	<b>Total liabilities and net assets/fund balances.</b> Add lines 66 and 73	163,559,005.	74	166,029,667.	

**Part IV-A Reconciliation of Revenue per Audited Financial Statements with Revenue per Return** (See the instructions.)

<b>a</b>	Total revenue, gains, and other support per audited financial statements.		<b>a</b>	81,546,327.
<b>b</b>	Amounts included on line a but not on Part I, line 12.			
	1 Net unrealized gains on investments	<b>b1</b>		3,158,026.
	2 Donated services and use of facilities	<b>b2</b>		
	3 Recoveries of prior year grants	<b>b3</b>		
	4 Other (specify) _____ <u>See Stmt 11</u>	<b>b4</b>		682,514.
	Add lines <b>b1</b> through <b>b4</b>		<b>b</b>	3,840,540.
<b>c</b>	Subtract line <b>b</b> from line <b>a</b>		<b>c</b>	77,705,787.
<b>d</b>	Amounts included on Part I, line 12, but not on line a:			
	1 Investment expenses not included on Part I, line 6b	<b>d1</b>		
	2 Other (specify) _____ <u>See Stmt 12</u>	<b>d2</b>		118,000.
	Add lines <b>d1</b> and <b>d2</b>		<b>d</b>	118,000.
<b>e</b>	<b>Total revenue</b> (Part I, line 12). Add lines <b>c</b> and <b>d</b>		<b>e</b>	77,823,787.

**Part IV-B Reconciliation of Expenses per Audited Financial Statements with Expenses per Return**

<b>a</b>	Total expenses and losses per audited financial statements		<b>a</b>	76,708,755.
<b>b</b>	Amounts included on line a but not on Part I, line 17.			
	1 Donated services and use of facilities	<b>b1</b>		
	2 Prior year adjustments reported on Part I, line 20	<b>b2</b>		
	3 Losses reported on Part I, line 20	<b>b3</b>		
	4 Other (specify) _____ <u>See Stmt 13</u>	<b>b4</b>		717,238.
	Add lines <b>b1</b> through <b>b4</b>		<b>b</b>	717,238.
<b>c</b>	Subtract line <b>b</b> from line <b>a</b>		<b>c</b>	75,991,517.
<b>d</b>	Amounts included on Part I, line 17, but not on line a:			
	1 Investment expenses not included on Part I, line 6b	<b>d1</b>		
	2 Other (specify) _____ <u>See Stmt 14</u>	<b>d2</b>		118,000.
	Add lines <b>d1</b> and <b>d2</b>		<b>d</b>	118,000.
<b>e</b>	<b>Total expenses</b> (Part I, line 17). Add lines <b>c</b> and <b>d</b>		<b>e</b>	76,109,517.

**Part V-A Current Officers, Directors, Trustees, and Key Employees** (List each person who was an officer, director, trustee, or key employee at any time during the year even if they were not compensated.) (See the instructions.)

(A) Name and address	(B) Title and average hours per week devoted to position	(C) Compensation (if not paid, enter -0-)	(D) Contributions to employee benefit plans and deferred compensation plans	(E) Expense account and other allowances
See Statement 15		283,124.	45,336.	0.

**Part V-A Current Officers, Directors, Trustees, and Key Employees (continued)**

	Yes	No
<b>75a</b> Enter the total number of officers, directors, and trustees permitted to vote on organization business as board meetings <b>▶ 8</b>		
<b>b</b> Are any officers, directors, trustees, or key employees listed in Form 990, Part V-A, or highest compensated employees listed in Schedule A, Part I, or highest compensated professional and other independent contractors listed in Schedule A, Part II-A or II-B, related to each other through family or business relationships? If 'Yes,' attach a statement that identifies the individuals and explains the relationship(s) <b>See Statement 16</b>	X	
<b>c</b> Do any officers, directors, trustees, or key employees listed in form 990, Part V-A, or highest compensated employees listed in Schedule A, Part I, or highest compensated professional and other independent contractors listed in Schedule A, Part II-A or II-B, receive compensation from any other organizations, whether tax exempt or taxable, that are related to the organization? See the instructions for the definition of 'related organization' If 'Yes,' attach a statement that includes the information described in the instructions <b>See Statement 17</b>	X	
<b>d</b> Does the organization have a written conflict of interest policy?	X	

**Part V-B Former Officers, Directors, Trustees, and Key Employees That Received Compensation or Other Benefits** (If any former officer, director, trustee, or key employee received compensation or other benefits (described below) during the year, list that person below and enter the amount of compensation or other benefits in the appropriate column. See the instructions.)

(A) Name and address	(B) Loans and Advances	(C) Compensation (if not paid, enter -0-)	(D) Contributions to employee benefit plans and deferred compensation plans	(E) Expense account and other allowances
None				
-----				
-----				
-----				
-----				
-----				
-----				
-----				
-----				
-----				

**Part VI Other Information (See the instructions.)**

	Yes	No
<b>76</b> Did the organization make a change in its activities or methods of conducting activities? If 'Yes,' attach a detailed statement of each change		X
<b>77</b> Were any changes made in the organizing or governing documents but not reported to the IRS? If 'Yes,' attach a conformed copy of the changes		X
<b>78a</b> Did the organization have unrelated business gross income of \$1,000 or more during the year covered by this return?		X
<b>b</b> If 'Yes,' has it filed a tax return on Form 990-T for this year?	N/A	
<b>79</b> Was there a liquidation, dissolution, termination, or substantial contraction during the year? If 'Yes,' attach a statement		X
<b>80a</b> Is the organization related (other than by association with a statewide or nationwide organization) through common membership, governing bodies, trustees, officers, etc, to any other exempt or nonexempt organization?	X	
<b>b</b> If 'Yes,' enter the name of the organization <b>▶ See Statement 18</b>		
_____ and check whether it is <input checked="" type="checkbox"/> exempt or <input checked="" type="checkbox"/> nonexempt		
<b>81a</b> Enter direct and indirect political expenditures. (See line 81 instructions)		0.
<b>b</b> Did the organization file Form 1120-POL for this year?		X

**Part VI Other Information** (continued)

		Yes	No
<b>82 a</b>	Did the organization receive donated services or the use of materials, equipment, or facilities at no charge or at substantially less than fair rental value?	X	
<b>b</b>	If 'Yes,' you may indicate the value of these items here. Do not include this amount as revenue in Part I or as an expense in Part II (See instructions in Part III.)	<b>82 b</b> Not Valued	
<b>83 a</b>	Did the organization comply with the public inspection requirements for returns and exemption applications?	X	
<b>b</b>	Did the organization comply with the disclosure requirements relating to <i>quid pro quo</i> contributions?	X	
<b>84 a</b>	Did the organization solicit any contributions or gifts that were not tax deductible?		X
<b>b</b>	If 'Yes,' did the organization include with every solicitation an express statement that such contributions or gifts were not tax deductible?	N/A	
<b>85</b>	<b>501(c)(4), (5), or (6) organizations.</b> <b>a</b> Were substantially all dues nondeductible by members?	N/A	
<b>b</b>	Did the organization make only in-house lobbying expenditures of \$2,000 or less? If 'Yes' was answered to either 85a or 85b, <b>do not</b> complete 85c through 85h below unless the organization received a waiver for proxy tax owed for the prior year.	N/A	
<b>c</b>	Dues, assessments, and similar amounts from members	<b>85 c</b>	N/A
<b>d</b>	Section 162(e) lobbying and political expenditures	<b>85 d</b>	N/A
<b>e</b>	Aggregate nondeductible amount of section 6033(e)(1)(A) dues notices	<b>85 e</b>	N/A
<b>f</b>	Taxable amount of lobbying and political expenditures (line 85d less 85e)	<b>85 f</b>	N/A
<b>g</b>	Does the organization elect to pay the section 6033(e) tax on the amount on line 85f?	<b>85 g</b>	N/A
<b>h</b>	If section 6033(e)(1)(A) dues notices were sent, does the organization agree to add the amount on line 85f to its reasonable estimate of dues allocable to nondeductible lobbying and political expenditures for the following tax year?	<b>85 h</b>	N/A
<b>86</b>	<b>501(c)(7) organizations</b> Enter <b>a</b> Initiation fees and capital contributions included on line 12	<b>86 a</b>	N/A
<b>b</b>	Gross receipts, included on line 12, for public use of club facilities	<b>86 b</b>	N/A
<b>87</b>	<b>501(c)(12) organizations</b> Enter <b>a</b> Gross income from members or shareholders	<b>87 a</b>	N/A
<b>b</b>	Gross income from other sources. (Do not net amounts due or paid to other sources against amounts due or received from them)	<b>87 b</b>	N/A
<b>88 a</b>	At any time during the year, did the organization own a 50% or greater interest in a taxable corporation or partnership, or an entity disregarded as separate from the organization under Regulations sections 301.7701-2 and 301.7701-3? If 'Yes,' complete Part IX	X	
<b>b</b>	At any time during the year, did the organization, directly or indirectly, own a controlled entity within the meaning of section 512(b)(13)? If 'Yes,' complete Part XI		X
<b>89 a</b>	<b>501(c)(3) organizations.</b> Enter. Amount of tax imposed on the organization during the year under section 4911 <u>0.</u> , section 4912 <u>0.</u> , section 4955 <u>0.</u>		
<b>b</b>	<b>501(c)(3) and 501(c)(4) organizations.</b> Did the organization engage in any section 4958 excess benefit transaction during the year or did it become aware of an excess benefit transaction from a prior year? If 'Yes,' attach a statement explaining each transaction		X
<b>c</b>	Enter. Amount of tax imposed on the organization managers or disqualified persons during the year under sections 4912, 4955, and 4958		0.
<b>d</b>	Enter. Amount of tax on line 89c, above, reimbursed by the organization		0.
<b>e</b>	<b>All organizations</b> At any time during the tax year, was the organization a party to a prohibited tax shelter transaction?		X
<b>f</b>	<b>All organizations</b> Did the organization acquire a direct or indirect interest in any applicable insurance contract?		X
<b>g</b>	<b>For supporting organizations and sponsoring organizations maintaining donor advised funds.</b> Did the supporting organization, or a fund maintained by a sponsoring organization, have excess business holdings at any time during the year?		X
<b>90 a</b>	List the states with which a copy of this return is filed <b>See Statement 19</b>		
<b>b</b>	Number of employees employed in the pay period that includes March 12, 2006 (See instructions.)	<b>90 b</b>	38
<b>91 a</b>	The books are in care of <b>Drummond Pike</b> Telephone number <b>(415) 561-6400</b> Located at <b>PO Box 29903, San Francisco, CA,</b> ZIP + 4 <b>94129-0903</b>		
<b>b</b>	At any time during the calendar year, did the organization have an interest in or a signature or other authority over a financial account in a foreign country (such as a bank account, securities account, or other financial account)? If 'Yes,' enter the name of the foreign country	<b>91 b</b>	X

See the instructions for exceptions and filing requirements for **Form TD F 90-22.1**, Report of Foreign Bank and Financial Accounts.

**Part VI Other Information (continued)**

c At any time during the calendar year, did the organization maintain an office outside of the United States?

	Yes	No
91 c		X

If 'Yes,' enter the name of the foreign country

92 Section 4947(a)(1) nonexempt charitable trusts filing Form 990 in lieu of Form 1041 - Check here

N/A

and enter the amount of tax-exempt interest received or accrued during the tax year

92 N/A

**Part VII Analysis of Income-Producing Activities (See the instructions.)**

Note: Enter gross amounts unless otherwise indicated.

	Unrelated business income		Excluded by section 512, 513, or 514		(E) Related or exempt function income
	(A) Business code	(B) Amount	(C) Exclusion code	(D) Amount	
93 Program service revenue					
a Program Fees Revenue					798,281.
b					
c					
d					
e					
f Medicare/Medicaid payments					
g Fees & contracts from government agencies					
94 Membership dues and assessments					
95 Interest on savings & temporary cash invmnts			14	65,701.	
96 Dividends & interest from securities			14	5,637,951.	
97 Net rental income or (loss) from real estate.					
a debt-financed property					
b not debt-financed property					
98 Net rental income or (loss) from pers prop					
99 Other investment income					
100 Gain or (loss) from sales of assets other than inventory			18	2,270,378.	
101 Net income or (loss) from special events					
102 Gross profit or (loss) from sales of inventory					
103 Other revenue. a					
b See Statement 20					325,919.
c					
d					
e					
104 Subtotal (add columns (B), (D), and (E))				7,974,030.	1,124,200.
105 Total (add line 104, columns (B), (D), and (E))					9,098,230.

Note: Line 105 plus line 1d, Part I, should equal the amount on line 12, Part I

**Part VIII Relationship of Activities to the Accomplishment of Exempt Purposes (See the instructions.)**

Line No.	Explain how each activity for which income is reported in column (E) of Part VII contributed importantly to the accomplishment of the organization's exempt purposes (other than by providing funds for such purposes)
21	See Statement 21

**Part IX Information Regarding Taxable Subsidiaries and Disregarded Entities (See the instructions.)**

(A) Name, address, and EIN of corporation, partnership, or disregarded entity	(B) Percentage of ownership interest	(C) Nature of activities	(D) Total income	(E) End-of-year assets
Highwater, Inc. P.O. Box 29903 San Francisco, CA 94129 94-3214043	100.000 %	Real Estate Dvlpt	0.	0.
	%		Dissolved 12/31/06	

**Part X Information Regarding Transfers Associated with Personal Benefit Contracts (See the instructions.)**

a Did the organization, during the year, receive any funds, directly or indirectly, to pay premiums on a personal benefit contract?

Yes  No

b Did the organization, during the year, pay premiums, directly or indirectly, on a personal benefit contract?

Yes  No

Note: If 'Yes' to (b), file Form 8870 and Form 4720 (see instructions)



**Part XI Information Regarding Transfers To and From Controlled Entities.** Complete only if the organization is a controlling organization as defined in section 512(b)(13).

**106** Did the reporting organization **make** any transfers to a controlled entity as defined in section 512(b)(13) of the Code? If 'Yes,' complete the schedule below for each controlled entity

Yes	No
	X

	(A) Name, address, of each controlled entity	(B) Employer Identification Number	(C) Description of transfer	(D) Amount of transfer
a	-----			
b	-----			
c	-----			
<b>Totals</b>				

**107** Did the reporting organization **receive** any transfers from a controlled entity as defined in section 512(b)(13) of the Code? If 'Yes,' complete the schedule below for each controlled entity

Yes	No
	X

	(A) Name, address, of each controlled entity	(B) Employer Identification Number	(C) Description of transfer	(D) Amount of transfer
a	-----			
b	-----			
c	-----			
<b>Totals</b>				

**108** Did the organization have a binding written contract in effect on August 17, 2006, covering the interest, rents, royalties, and annuities described in question 107 above?

Yes	No
	X

**Please Sign Here**

Under penalties of perjury, I declare that I have examined this return, including accompanying schedules and statements, and to the best of my knowledge and belief, it is true, correct, and complete. Declaration of preparer (other than officer) is based on all information of which preparer has any knowledge.

▶ Lauren Webster Signature of officer Date 6/22/2007

▶ Lauren Webster, CFO Type or print name and title

**Paid Preparer's Use Only**

Preparer's signature ▶ Carol Duffield Date 6/21/07 Check if self employed  Preparer's SSN or PTIN (See General Instruction W) N/A

Firm's name (or yours if self employed), address, and ZIP + 4 ▶ Fontanello, Duffield & Otake, LLP EIN ▶ N/A

44 Montgomery Street, Suite 2019 Phone no ▶ (415) 983-0200

San Francisco, CA 94104

**SCHEDULE A**  
**(Form 990 or 990-EZ)**

**Organization Exempt Under**  
**Section 501(c)(3)**

OMB No 1545 0047

**(Except Private Foundation) and Section 501(e), 501(f), 501(k),**  
**501(n), or 4947(a)(1) Nonexempt Charitable Trust**

**2006**

**Supplementary Information — (See separate instructions.)**

Department of the Treasury  
Internal Revenue Service

▶ **MUST be completed by the above organizations and attached to their Form 990 or 990-EZ.**

Name of the organization

Employer identification number

Tides Foundation

51-0198509

**Part I Compensation of the Five Highest Paid Employees Other Than Officers, Directors, and Trustees**  
(See instructions. List each one. If there are none, enter 'None.')

(a) Name and address of each employee paid more than \$50,000	(b) Title and average hours per week devoted to position	(c) Compensation	(d) Contributions to employee benefit plans and deferred compensation	(e) Expense account and other allowances
See Statement 22		578,365.	68,457.	0.
Total number of other employees paid over \$50,000	▶ 16			

**Part II — A Compensation of the Five Highest Paid Independent Contractors for Professional Services**  
(See instructions. List each one (whether individuals or firms). If there are none, enter 'None.')

(a) Name and address of each independent contractor paid more than \$50,000	(b) Type of service	(c) Compensation
See Statement 23		811,697.
Total number of others receiving over \$50,000 for professional services	▶ 1	

**Part II — B Compensation of the Five Highest Paid Independent Contractors for Other Services**  
(List each contractor who performed services other than professional services, whether individuals or firms. If there are none, enter 'None.' See instructions.)

(a) Name and address of each independent contractor paid more than \$50,000	(b) Type of service	(c) Compensation
None		
Total number of other contractors receiving over \$50,000 for other services	▶ 0	

**Part III** Statements About Activities (See instructions.)

	Yes	No
<p><b>1</b> During the year, has the organization attempted to influence national, state, or local legislation, including any attempt to influence public opinion on a legislative matter or referendum? If 'Yes,' enter the total expenses paid or incurred in connection with the lobbying activities <b>▶ \$ 1,425,251.</b></p> <p>(Must equal amounts on line 38, Part VI-A, or line i of Part VI-B.)</p> <p>Organizations that made an election under section 501(h) by filing Form 5768 must complete Part VI-A. Other organizations checking 'Yes' must complete Part VI-B AND attach a statement giving a detailed description of the lobbying activities</p>	X	
<p><b>2</b> During the year, has the organization, either directly or indirectly, engaged in any of the following acts with any substantial contributors, trustees, directors, officers, creators, key employees, or members of their families, or with any taxable organization with which any such person is affiliated as an officer, director, trustee, majority owner, or principal beneficiary? (If the answer to any question is 'Yes,' attach a detailed statement explaining the transactions.)</p>		
<p><b>a</b> Sale, exchange, or leasing of property?</p>		X
<p><b>b</b> Lending of money or other extension of credit?</p>		X
<p><b>c</b> Furnishing of goods, services, or facilities?</p>		X
<p><b>d</b> Payment of compensation (or payment or reimbursement of expenses if more than \$1,000)?</p>	X	
<p><b>e</b> Transfer of any part of its income or assets?</p>		X
<p><b>3a</b> Did the organization make grants for scholarships, fellowships, student loans, etc? (If 'Yes,' attach an explanation of how the organization determines that recipients qualify to receive payments )</p>		X
<p><b>b</b> Did the organization have a section 403(b) annuity plan for its employees?</p>	X	
<p><b>c</b> Did the organization receive or hold an easement for conservation purposes, including easements to preserve open space, the environment, historic land areas or historic structures? If 'Yes,' attach a detailed statement</p>		X
<p><b>d</b> Did the organization provide credit counseling, debt management, credit repair, or debt negotiation services?</p>		X
<p><b>4a</b> Did the organization maintain any donor advised funds? If 'Yes,' complete lines 4b through 4g If 'No,' complete lines 4f and 4g</p>	X	
<p><b>b</b> Did the organization make any taxable distributions under section 4966?</p>		X
<p><b>c</b> Did the organization make a distribution to a donor, donor advisor, or related person?</p>		X
<p><b>d</b> Enter the total number of donor advised funds owned at the end of the tax year <b>▶ 271</b></p>		
<p><b>e</b> Enter the aggregate value of assets held in all donor advised funds owned at the end of the tax year <b>▶ 132,153,692.</b></p>		
<p><b>f</b> Enter the total number of separate funds or accounts owned at the end of the tax year (excluding donor advised funds included on line 4d) where donors have the right to provide advice on the distribution or investment of amounts in such funds or accounts <b>▶</b></p>		
<p><b>g</b> Enter the aggregate value of assets held in all funds or accounts included on line 4f at the end of the tax year <b>▶</b></p>		

**Part IV Reason for Non-Private Foundation Status** (See instructions.)

I certify that the organization is not a private foundation because it is. (Please check only **ONE** applicable box.)

- 5  A church, convention of churches, or association of churches Section 170(b)(1)(A)(i).
- 6  A school Section 170(b)(1)(A)(ii). (Also complete Part V.)
- 7  A hospital or a cooperative hospital service organization. Section 170(b)(1)(A)(iii)
- 8  A federal, state, or local government or governmental unit Section 170(b)(1)(A)(v)
- 9  A medical research organization operated in conjunction with a hospital. Section 170(b)(1)(A)(iii). **Enter the hospital's name, city, and state** ▶ \_\_\_\_\_
- 10  An organization operated for the benefit of a college or university owned or operated by a governmental unit Section 170(b)(1)(A)(iv). (Also complete the **Support Schedule** in Part IV-A.)
- 11a  An organization that normally receives a substantial part of its support from a governmental unit or from the general public. Section 170(b)(1)(A)(vi). (Also complete the **Support Schedule** in Part IV-A.)
- 11b  A community trust. Section 170(b)(1)(A)(vi). (Also complete the **Support Schedule** in Part IV-A.)
- 12  An organization that normally receives **(1) more than 33-1/3%** of its support from contributions, membership fees, and gross receipts from activities related to its charitable, etc, functions — subject to certain exceptions, and **(2) no more than 33-1/3%** of its support from gross investment income and unrelated business taxable income (less section 511 tax) from businesses acquired by the organization after June 30, 1975 See section 509(a)(2) (Also complete the **Support Schedule** in Part IV-A.)
- 13  An organization that is not controlled by any disqualified persons (other than foundation managers) and otherwise meets the requirements of section 509(a)(3). Check the box that describes the type of supporting organization ▶  
 Type I     Type II     Type III-Functionally Integrated     Type III-Other

**Provide the following information about the supported organizations.** (See instructions.)

(a) Name(s) of supported organization(s)	(b) Employer identification number (EIN)	(c) Type of organization (described in lines 5 through 12 above or IRC section)	(d) Is the supported organization listed in the supporting organization's governing documents?		(e) Amount of support
			Yes	No	
<b>Total</b> ▶					0.

- 14  An organization organized and operated to test for public safety. Section 509(a)(4) (See instructions.)

**Part IV-A Support Schedule** (Complete only if you checked a box on line 10, 11, or 12.) *Use cash method of accounting.*

**Note:** You may use the worksheet in the instructions for converting from the accrual to the cash method of accounting.

Calendar year (or fiscal year beginning in)	(a) 2005	(b) 2004	(c) 2003	(d) 2002	(e) Total
<b>15</b> Gifts, grants, and contributions received. (Do not include unusual grants. See line 28.)	81,706,286.	72,662,625.	52,229,972.	60,656,234.	267,255,117.
<b>16</b> Membership fees received					0.
<b>17</b> Gross receipts from admissions, merchandise sold or services performed, or furnishing of facilities in any activity that is related to the organization's charitable, etc, purpose	750,315.	741,553.	225,907.	622,921.	2,340,696.
<b>18</b> Gross income from interest, dividends, amounts received from payments on securities loans (section 512(a)(5)), rents, royalties, and unrelated business taxable income (less section 511 taxes) from businesses acquired by the organization after June 30, 1975	4,525,402.	3,418,465.	3,215,067.	3,382,999.	14,541,933.
<b>19</b> Net income from unrelated business activities not included in line 18			67,646.	22,911.	90,557.
<b>20</b> Tax revenues levied for the organization's benefit and either paid to it or expended on its behalf					0.
<b>21</b> The value of services or facilities furnished to the organization by a governmental unit without charge. Do not include the value of services or facilities generally furnished to the public without charge.					0.
<b>22</b> Other income. Attach a schedule. Do not include gain or (loss) from sale of capital assets					0.
<b>23</b> Total of lines 15 through 22	86,982,003.	76,822,643.	55,738,592.	64,685,065.	284,228,303.
<b>24</b> Line 23 minus line 17	86,231,688.	76,081,090.	55,512,685.	64,062,144.	281,887,607.
<b>25</b> Enter 1% of line 23	869,820.	768,226.	557,386.	646,851.	
<b>26 Organizations described on lines 10 or 11:</b>					
<b>a</b> Enter 2% of amount in column (e), line 24					<b>26a</b> 5,637,752.
<b>b</b> Prepare a list for your records to show the name of and amount contributed by each person (other than a governmental unit or publicly supported organization) whose total gifts for 2002 through 2005 exceeded the amount shown in line 26a. Do not file this list with your return. Enter the total of all these excess amounts					<b>26b</b> 36,432,756.
<b>c</b> Total support for section 509(a)(1) test. Enter line 24, column (e)					<b>26c</b> 281,887,607.
<b>d</b> Add. Amounts from column (e) for lines:	<b>18</b> 14,541,933.	<b>19</b> 90,557.	<b>26b</b> 36,432,756.		
	<b>22</b>			<b>26d</b> 51,065,246.	
<b>e</b> Public support (line 26c minus line 26d total)					<b>26e</b> 230,822,361.
<b>f</b> Public support percentage (line 26e (numerator) divided by line 26c (denominator))					<b>26f</b> 81.88 %
<b>27 Organizations described on line 12:</b>	N/A				
<b>a</b> For amounts included in lines 15, 16, and 17 that were received from a 'disqualified person,' prepare a list for your records to show the name of, and total amounts received in each year from, each 'disqualified person.' Do not file this list with your return. Enter the sum of such amounts for each year					
(2005) _____ (2004) _____ (2003) _____ (2002) _____					
<b>b</b> For any amount included in line 17 that was received from each person (other than 'disqualified persons'), prepare a list for your records to show the name of, and amount received for each year, that was more than the larger of (1) the amount on line 25 for the year or (2) \$5,000. (Include in the list organizations described in lines 5 through 11b, as well as individuals.) Do not file this list with your return. After computing the difference between the amount received and the larger amount described in (1) or (2), enter the sum of these differences (the excess amounts) for each year:					
(2005) _____ (2004) _____ (2003) _____ (2002) _____					
<b>c</b> Add. Amounts from column (e) for lines:	<b>15</b> _____	<b>16</b> _____			
	<b>17</b> _____	<b>20</b> _____	<b>21</b> _____		
<b>d</b> Add. Line 27a total _____ and line 27b total _____					<b>27c</b> _____
<b>e</b> Public support (line 27c total minus line 27d total)					<b>27d</b> _____
<b>f</b> Total support for section 509(a)(2) test. Enter amount from line 23, column (e)					<b>27e</b> _____
<b>g</b> Public support percentage (line 27e (numerator) divided by line 27f (denominator))					<b>27f</b> _____
<b>h</b> Investment income percentage (line 18, column (e) (numerator) divided by line 27f (denominator))					<b>27g</b> _____ %
					<b>27h</b> _____ %

**28 Unusual Grants:** For an organization described in line 10, 11, or 12 that received any unusual grants during 2002 through 2005, prepare a list for your records to show, for each year, the name of the contributor, the date and amount of the grant, and a brief description of the nature of the grant. Do not file this list with your return. Do not include these grants in line 15

**Part V Private School Questionnaire** (See instructions.)  
 (To be completed ONLY by schools that checked the box on line 6 in Part IV)

N/A

	Yes	No
<b>29</b> Does the organization have a racially nondiscriminatory policy toward students by statement in its charter, bylaws, other governing instrument, or in a resolution of its governing body?		
<b>30</b> Does the organization include a statement of its racially nondiscriminatory policy toward students in all its brochures, catalogues, and other written communications with the public dealing with student admissions, programs, and scholarships?		
<b>31</b> Has the organization publicized its racially nondiscriminatory policy through newspaper or broadcast media during the period of solicitation for students, or during the registration period if it has no solicitation program, in a way that makes the policy known to all parts of the general community it serves? If 'Yes,' please describe, if 'No,' please explain (If you need more space, attach a separate statement.) ----- ----- -----		
<b>32</b> Does the organization maintain the following		
<b>a</b> Records indicating the racial composition of the student body, faculty, and administrative staff?		
<b>b</b> Records documenting that scholarships and other financial assistance are awarded on a racially nondiscriminatory basis?		
<b>c</b> Copies of all catalogues, brochures, announcements, and other written communications to the public dealing with student admissions, programs, and scholarships?		
<b>d</b> Copies of all material used by the organization or on its behalf to solicit contributions?  If you answered 'No' to any of the above, please explain. (If you need more space, attach a separate statement ) ----- -----		
<b>33</b> Does the organization discriminate by race in any way with respect to.		
<b>a</b> Students' rights or privileges?		
<b>b</b> Admissions policies?		
<b>c</b> Employment of faculty or administrative staff?		
<b>d</b> Scholarships or other financial assistance?		
<b>e</b> Educational policies?		
<b>f</b> Use of facilities?		
<b>g</b> Athletic programs?		
<b>h</b> Other extracurricular activities?  If you answered 'Yes' to any of the above, please explain. (If you need more space, attach a separate statement ) ----- -----		
<b>34a</b> Does the organization receive any financial aid or assistance from a governmental agency?		
<b>b</b> Has the organization's right to such aid ever been revoked or suspended? If you answered 'Yes' to either 34a or b, please explain using an attached statement.		
<b>35</b> Does the organization certify that it has complied with the applicable requirements of sections 4 01 through 4 05 of Rev Proc 75-50, 1975-2 C.B. 587, covering racial nondiscrimination? If 'No,' attach an explanation.		

**Part VI-A Lobbying Expenditures by Electing Public Charities** (See instructions.)  
(To be completed **ONLY** by an eligible organization that filed Form 5768)

N/A

Check  **a** if the organization belongs to an affiliated group Check  **b** if you checked 'a' and 'limited control' provisions apply.

**Limits on Lobbying Expenditures**

(The term 'expenditures' means amounts paid or incurred.)

	(a) Affiliated group totals	(b) To be completed for all electing organizations
<b>36</b> Total lobbying expenditures to influence public opinion (grassroots lobbying)	<b>36</b>	
<b>37</b> Total lobbying expenditures to influence a legislative body (direct lobbying)	<b>37</b>	
<b>38</b> Total lobbying expenditures (add lines 36 and 37)	<b>38</b>	
<b>39</b> Other exempt purpose expenditures	<b>39</b>	
<b>40</b> Total exempt purpose expenditures (add lines 38 and 39)	<b>40</b>	
<b>41</b> Lobbying nontaxable amount Enter the amount from the following table –		
<b>If the amount on line 40 is –</b>		
Not over \$500,000		
Over \$500,000 but not over \$1,000,000		
Over \$1,000,000 but not over \$1,500,000		
Over \$1,500,000 but not over \$17,000,000		
Over \$17,000,000		
<b>The lobbying nontaxable amount is –</b>		
20% of the amount on line 40		
\$100,000 plus 15% of the excess over \$500,000		
\$175,000 plus 10% of the excess over \$1,000,000	<b>41</b>	
\$225,000 plus 5% of the excess over \$1,500,000		
\$1,000,000		
<b>42</b> Grassroots nontaxable amount (enter 25% of line 41)	<b>42</b>	
<b>43</b> Subtract line 42 from line 36. Enter -0- if line 42 is more than line 36	<b>43</b>	
<b>44</b> Subtract line 41 from line 38. Enter -0- if line 41 is more than line 38	<b>44</b>	

**Caution:** If there is an amount on either line 43 or line 44, you must file Form 4720.

**4-Year Averaging Period Under Section 501(h)**

(Some organizations that made a section 501(h) election do not have to complete all of the five columns below. See the instructions for lines 45 through 50)

**Lobbying Expenditures During 4-Year Averaging Period**

Calendar year (or fiscal year beginning in) ▶	Lobbying Expenditures During 4-Year Averaging Period				
	(a) 2006	(b) 2005	(c) 2004	(d) 2003	(e) Total
<b>45</b> Lobbying nontaxable amount					
<b>46</b> Lobbying ceiling amount (150% of line 45(e))					
<b>47</b> Total lobbying expenditures					
<b>48</b> Grassroots non-taxable amount					
<b>49</b> Grassroots ceiling amount (150% of line 48(e))					
<b>50</b> Grassroots lobbying expenditures					

**Part VI-B Lobbying Activity by Nonelecting Public Charities**

(For reporting only by organizations that did not complete Part VI-A) (See instructions.)

During the year, did the organization attempt to influence national, state or local legislation, including any attempt to influence public opinion on a legislative matter or referendum, through the use of.

- a** Volunteers
- b** Paid staff or management (Include compensation in expenses reported on lines c through h.)
- c** Media advertisements
- d** Mailings to members, legislators, or the public
- e** Publications, or published or broadcast statements
- f** Grants to other organizations for lobbying purposes **See Statement 32**
- g** Direct contact with legislators, their staffs, government officials, or a legislative body
- h** Rallies, demonstrations, seminars, conventions, speeches, lectures, or any other means
- i** Total lobbying expenditures (add lines c through h.)

Yes	No	Amount
	X	
	X	
	X	
	X	
	X	
X		1,425,251.
	X	
	X	
		1,425,251.

If 'Yes' to any of the above, also attach a statement giving a detailed description of the lobbying activities.

**Part VII Information Regarding Transfers To and Transactions and Relationships With Noncharitable Exempt Organizations** (See instructions)

**51** Did the reporting organization directly or indirectly engage in any of the following with any other organization described in section 501(c) of the Code (other than section 501(c)(3) organizations) or in section 527, relating to political organizations?

**a** Transfers from the reporting organization to a noncharitable exempt organization of:

	Yes	No
<b>51 a (i)</b>	X	
<b>a (ii)</b>		X
<b>b (i)</b>		X
<b>b (ii)</b>		X
<b>b (iii)</b>		X
<b>b (iv)</b>		X
<b>b (v)</b>		X
<b>b (vi)</b>		X
<b>c</b>		X

(i) Cash

(ii) Other assets

**b** Other transactions:

(i) Sales or exchanges of assets with a noncharitable exempt organization

(ii) Purchases of assets from a noncharitable exempt organization

(iii) Rental of facilities, equipment, or other assets

(iv) Reimbursement arrangements

(v) Loans or loan guarantees

(vi) Performance of services or membership or fundraising solicitations

**c** Sharing of facilities, equipment, mailing lists, other assets, or paid employees

**d** If the answer to any of the above is 'Yes,' complete the following schedule. Column (b) should always show the fair market value of the goods, other assets, or services given by the reporting organization. If the organization received less than fair market value in any transaction or sharing arrangement, show in column (d) the value of the goods, other assets, or services received

(a) Line no	(b) Amount involved	(c) Name of noncharitable exempt organization	(d) Description of transfers, transactions, and sharing arrangements
See Statement 24			

**52a** Is the organization directly or indirectly affiliated with, or related to, one or more tax-exempt organizations described in section 501(c) of the Code (other than section 501(c)(3)) or in section 527?

Yes  No

**b** If 'Yes,' complete the following schedule.

(a) Name of organization	(b) Type of organization	(c) Description of relationship
Tides Advocacy Fund	501(c)(4)	Tides Advocacy Fund is a Social Welfare Organization whose operations are intended to complement the goals of the Foundation.



2006

Federal Statements

Tides Foundation

51-0198509

Statement 1  
Form 990, Part I, Line 8  
Net Gain (Loss) from Noninventory Sales

Publicly Traded Securities

Gross Sales Price: 103,243,824.  
Cost or Other Basis: 100,972,918.

Total Gain (Loss) Publicly Traded Securities \$ 2,270,906.

Other Assets

Description: Gain on Disposal of Equipment  
Date Acquired: Various  
How Acquired: Purchase  
Date Sold: Various  
To Whom Sold:  
Gross Sales Price: 480.  
Cost or Other Basis: 1,008.

Gain (Loss) -528.

Total Gain (Loss) Other Assets \$ -528.

Total Net Gain (Loss) From Noninventory Sales \$ 2,270,378.

Statement 2  
Form 990, Part I, Line 20  
Other Changes in Net Assets or Fund Balances

FMV Adj of Investments \$ 3,158,026.  
Net Income from Controlled Subsidiary 91,932.  
Total \$ 3,249,958.

Statement 3  
Form 990, Part II, Line 22a  
Grants and Allocations from Donor Advised Funds

Cash Grants and Allocations

Class of Activity: Charitable  
Donee's Name: Statement Attached  
Donee's Address: c/o PO Box 29903  
San Francisco, CA 94129  
Relationship of Donee: N/A  
Amount Given: \$ 46,121,608.

Total Grants and Allocations \$ 46,121,608.

**TIDES FOUNDATION  
FEDERAL STATEMENTS**

**Tides Foundation  
Grants Awarded  
From Donor Advised Funds**

1+1+1=ONE	7,000
3rd EyE Youth Empowerment	500
42nd Street Moon	100
651 ARTS	40,000
826 Seattle	250
A Home Within	5,000
A Traveling Jewish Theater	1,600
A.J. Muste Memorial Institute / International Peace Bureau	2,000
A.J. Muste Memorial Institute / School of the Americas Watch	1,000
A.J. Muste Memorial Institute / War Resisters League	1,000
Abortion Rights Fund of Western Massachusetts	2,500
Abraham Fund	13,480
Academy For Educational Development	10,000
ACORN Institute	106,000
Acorn International	20,000
Acterra	10,000
Action for Children	10,000
Action on Disability and Development	24,426
Adaptive Design Association	25,000
Added Value & Herban Solutions Inc	20,000
Advocates for Environmental Human Rights	30,000
Affordable Housing Associates	500
Affordable Housing Resources, Inc.	3,500
African Film Festival, Inc.	10,000
African Services Committee, Inc.	6,000
African Women's Millennium Initiative on Poverty and Human Rights	100,000
African Women's Development Fund	116,250
Agape Foundation / Military Out of Our Schools - Bay Area	2,000
Agape Foundation / The People's Grocery	16,000
Aid For AIDS	1,000
Aidmatrix Foundation	10,000
AIDS Emergency Fund	5,000
Alameda County Community Food Bank	6,000
Alamos Wildlands Alliance	3,000
Alaska Conservation Foundation	61,000
Albany Education Foundation	5,000
ALEPH - Alliance for Jewish Renewal	500
Algebra Project	52,000
ALIAS Chamber Ensemble	500
All Congregations Together	2,500
All Seasons Chalice Church	20,800
Alliance for Excellent Education	10,000
Alliance for Quality Education	50,000
Alliance for Sustainable Colorado	1,000
Alliance for the Wild Rockies	4,000
Allied Arts Foundation	1,000
Allied Jewish Federation of Colorado	2,700
ALSO for Gay Youth	5,000
Alta Bates Summit Foundation	250
Alvarado Elementary School	1,500
Amazon Conservation Team	20,000
Amazon Watch	300
American Associates Ben-Gurion University of the Negev	1,000
American Cancer Society, Great West Division, Inc.	525
American Chemical Society / Green Chemistry Institute	250,000

**Statement 3**

**Form 990, Part II, Line 22a**

**Grants and Allocations from Donor Advised Funds**

**TIDES FOUNDATION  
FEDERAL STATEMENTS**

American Civil Liberties Union	24,000
American Civil Liberties Union of Tennessee	29,020
American Civil Liberties Union Florida	44,000
American Civil Liberties Union Foundation	13,250
American Civil Liberties Union Foundation of Northern California	31,000
American Civil Liberties Union of Florida	126,000
American Civil Liberties Union of Mississippi	10,700
American Civil Liberties Union of North Carolina Legal Foundation	10,000
American Committee for the Weizmann Institute of Science	2,500
American Concert Ballet	13,763
American Documentary	40,000
American Foundation for AIDS Research	100,000
American Friends of Old City Charities	3,600
American Friends Service Committee	3,700
American Heart Association	100
American Institute for Social Justice	450,000
American Institute for Social Justice / ACORN	202,500
American Institute for Social Justice / Massachusetts ACORN	2,500
American Jewish Committee	12,500
American Jewish Congress	500
American Jewish Joint Distribution Committee	1,000
American Jewish World Service	59,600
American Lands Alliance	500
American Medical Student Association Foundation / National Physicians Alliance	1,000
American Museum of Natural History	4,000
American Progress Action Fund	25,000
American Red Cross	5,000
American Refugee Committee International	30,000
American Repertory Theatre	50,000
American Society for Technion	500
American Task Force on Palestine	10,000
Americans for Peace Now	250
Americans for UNFPA	15,000
Americans United	30,000
Americans United for Separation of Church and State	35,250
Amherst Writers & Artists Press	5,000
Amnesty International USA	6,324
AMVETS	250
Andrew Glover Youth Program	5,000
Andrew Jackson Police Youth Camp	250
Animal Place	2,000
Antioch University -- Seattle Branch	800
Aperture Foundation	500
Appalachian Community Fund	10,000
Applied Research Center	210,000
Applied Research Center / Tierra Madre Fund	5,000
Appui a l'Autoformation des Adultes Applique a l'Action par Alternance	7,500
APREMAVI - Associação de Preservação do Meio Ambiente do Alto Vale do Itajaí	5,000
Arawaka, Inc.	1,740
ARC International	100,000
ARDEAR Midi-Pyrenees	1,500
Arizona Community Foundation	6,000
Arizona Recreation Center for the Handicapped	1,000
Arizona State University Foundation / Arizona State University	5,000
Arkansas Institute for Social Justice	25,000
Art in General	100,000
Arthur Aviles Typical Theatre	10,000
Artists for Humanity	15,623
Artists Space	100,000
Arts in Progress	347
ArtShip Foundation	95,000

Statement 3

Form 990, Part II, Line 22a

Grants and Allocations from Donor Advised Funds

**TIDES FOUNDATION  
FEDERAL STATEMENTS**

ArtSpan	5,000
Ashoka	201,220
Asian & Pacific Islander Coalition on HIV/AIDS, Inc.	1,000
Asian Americans/Pacific Islanders in Philanthropy	25,000
Asian Art Museum Foundation of San Francisco	3,250
Asian Communities for Reproductive Justice	10,000
Asian Neighborhood Design	40,000
Asian Pacific Islander Legal Outreach	4,500
Asian Perinatal Advocates	4,500
Asian Women's Shelter	9,500
Asian Women's Shelter / Center for Special Problems	4,500
Asociacion de Pequeños y Medianos Productores Campesinos del Oriente	20,000
Asociacion Lihuen-Antu	15,000
Association Clean Shaper	5,000
Association d'Appui a la Promotion du Developpement Durable des Communautés	53,414
Association des Femmes de Gourcy	3,000
Association des Jeunesses Agricoles de Casamance	28,061
Association for International Solidarity in Asia, Inc.	10,000
Association for the Creative Endeavor	2,000
Association for the Development and Enhancement of Women	10,000
Association Georges Cooper-Les Jardiniers de la Mar	7,000
Association Guinéenne pour l'Allègement des Charges Féminines AGACFEM	35,734
Association Kokopelli	5,000
Association of Enneagram Teachers	10,000
Association of Women's Rights in Development	5,000
Association pour la Défense des Droits des Enfants et des Femmes en Guinée	19,914
Association Pour la Terre	4,000
Association pour le Reseau Babels	3,894
Association pour le Respect du Site du Mont Blanc	7,000
Association Protectrice du Saumon Axe Loire-Allier	1,500
Astraea Lesbian Foundation for Justice	39,000
Astrea Media, Inc.	13,250
Attitudinal Healing Connection	4,500
Aurora Theatre Company	1,000
Avodah: The Jewish Service Corps	3,500
AXIS Dance Company	10,000
Babson College	5,000
Bainbridge Graduate Institute	4,842
Ballot Initiative Strategy Center	140,000
Ballot Initiative Strategy Center Foundation	53,000
Baruch College	5,000
Bay Area Center for Independent Culture	1,000
Bay Area Legal Aid	4,500
Bay Area Outreach and Recreation Program	15,000
Bay Area Video Coalition	5,000
Bay Area Women's and Children's Center	1,000
Bay St. Lawrence Community Center	8,800
Baykeeper	1,000
Bayview Hunters Point Center for Arts and Technology	25,000
Bayview Hunter's Point Foundation for Community Improvement / Bayview Learns	30,000
Bayview Hunter's Point YMCA	40,000
Belmont-Hillsboro Neighbors	14,550
Bentley School	5,000
Bergwalkdprojekt e.V.	5,000
Berkeley Community Fund	7,000
Berkeley Food and Housing Project	3,500
Berkeley High School Development Group	3,000
Berkeley Public Education Foundation	3,250
Berkeley Repertory Theatre	36,200
Berkeley Society for the Preservation of Traditional Music	1,000
Big Brothers Big Sisters of Northern New Mexico	1,000

Statement 3

Form 990, Part II, Line 22a

Grants and Allocations from Donor Advised Funds

**TIDES FOUNDATION  
FEDERAL STATEMENTS**

Big Sky Institute for the Advancement of Nonprofits	2,000
Biosphere Foundation	1,000
Bisexual Resource Center / Rainbow Community Center, Inc.	500
Bishop of North American Region of Sukyo Mahikari	2,500
Bluewater Network	135,000
Bonneville Environmental Foundation	2,000
Boston Arts Academy	13,073
Boston Children's Chorus	8,144
Boston University	5,000
Boston Women's Fund	15,000
Boulder Community Broadcast Association	10,000
Boulder County Arts Alliance / Moving Ideas - EcoArts	2,000
Boulder Institute for Nature and the Human Spirit	5,040
Boys and Girls Clubs of King County Rotary Branch	5,000
Boys Town Jerusalem Foundation of America	5,000
Brady Center to Prevent Gun Violence	3,000
Braval for Women in the Arts	5,000
Bread And Roses	3,000
Breakthrough	200,000
Breakthrough Collaborative	1,600
Breast Cancer Action	250
Breast Cancer Emergency Fund	5,000
Breast Cancer Fund	3,000
Brennan Center for Justice	311,191
Bridgeport Child Advocacy Coalition	5,000
Brit Tzedek V'Shalom	10,000
Brookline High School 21st Century Fund	500
Brothers Against Guns	50,000
Business Leaders for Sensible Priorities True Majority Campaign	8,508
California Academy of Sciences	10,250
California Alumni Association	5,000
California Center for Community Democracy / North Coast Action	3,000
California Clean Money Campaign	2,000
California Community Foundation	3,000
California Environmental Law Project	40,000
California Wilderness Coalition	2,000
Calvert Social Investment Foundation	116,844
Cambiando Vidas	2,000
Camden Area Health Education Center	15,000
Camp Isabella Freedman	3,000
Campaign for America's Future	10,000
Camptonville Community Partnership	2,000
Canadian Parks and Wilderness Society	15,000
Cancer Research and Prevention Foundation / Tracy's Kids	3,500
Canyon Land Conservation Fund	4,000
Capitol Land Trust	5,000
Carbonfund.org	500
Caring for Children	1,500
Carmel Clay Public Library Foundation	100
Carrillo Counseling Services Inc.	12,000
Casa Amiga Centro de Crisis A.C.	5,000
Casa Latina	1,000
CASA NYC	7,500
Cascade Land Conservancy	5,000
Catalyst For Youth, Inc.	1,500
Catholic Alliance For the Common Good	40,000
Catholic Charities CYO	6,000
CELLspace / Big Tadoo Puppet Crew	2,000
Center for American Progress	125,000
Center for American Progress / Faith and Public Life Resource Center	75,000
Center for Arms Control and Non-Proliferation	500

Statement 3

Form 990, Part II, Line 22a

Grants and Allocations from Donor Advised Funds

**TIDES FOUNDATION  
FEDERAL STATEMENTS**

Center for Biological Diversity	2,000
Center for Civic Participation	150,000
Center for Common Concerns	250
Center for Community Advocacy	1,000
Center for Community Change	433,000
Center for Constitutional Rights	30,500
Center for Courage and Renewal	1,200
Center for Democratic Renewal and Education	75
Center for Ecoliteracy	150,000
Center for Egyptian Women's Legal Assistance	20,000
Center for Environmental Health	11,000
Center for Health, Environment and Justice	100,000
Center for Healthy Aging	2,500
Center for Independent Documentary	200,000
Center for Independent Documentary / Renewal	750,000
Center for Independent Living	15,000
Center for Investigative Reporting	1,500
Center for Justice and Accountability	15,000
Center for Mind-Body Medicine	3,000
Center for New Creation / Daughters of Mumbi Global Resource Center	15,000
Center for Nonprofit Management	5,000
Center for Policy Reform / The Ordinary People Society	46,680
Center for Progressive Leadership	40,000
Center for Reproductive Rights	15,000
Center for Sacred Studies	2,500
Center for SCREEN-TIME Awareness	1,000
Center for Spiritual Studies	11,000
Center for the Arts, Religion, and Education	50,000
Center for Third World Organizing	17,000
Center for Tobacco Control Research and Education, UCSF	20,000
Center for Victims of Torture	7,500
Center for Voting and Democracy	15,000
Center for Young Women's Development	45,000
Center on Budget and Policy Priorities	55,000
Central District Forum for Arts and Ideas	800
Centro de Derechos Humanos de la Montaña Tlachinollan A.C.	29,500
Centro Ecoceanos	50,000
Centro Independiente de Trabajadores Agrícolas	15,000
Centro Integral de Atención a las Mujeres	10,000
Centro Mexicano de Derecho Ambiental	50,000
Centro Mujeres	15,000
Ceres, Inc.	17,500
Chabot Space and Science Center	1,000
Chadeish Yameinu	2,000
Challenge New Mexico	7,500
Changemakers	72,400
Charlotte Maxwell Complementary Clinic	7,000
Chester River Association	20,000
Child Protection Society	15,000
Child Soldiers Coalition Educational and Research Trust	140,000
Children/Youth as Peacebuilders	65,000
Children's Action Alliance	250
Children's Organ Transplant Association	150
Children's Rights, Inc.	15,000
Children's Service Society of Wisconsin	50,000
China Labor Support Network	30,000
Chinook Fund	5,000
Chochmat HaLev	5,000
Chums of the Maxwellton Salmon Adventure	100
Church of the Holy Light of the Queen	39,000
CIF of The San Francisco Foundation / Youth Philanthropy Worldwide	70,000

Statement 3

Form 990, Part II, Line 22a

Grants and Allocations from Donor Advised Funds

**TIDES FOUNDATION  
FEDERAL STATEMENTS**

Circle of Life	10,000
Circle Pines Center	11,000
Circumpolar Conservation Union	1,200
Citizen Alert	8,000
Citizens for Responsibility and Ethics in Washington	30,000
City Fields Foundation	150,000
City of Hope	1,000
City Stage Company	9,877
CLAL- The National Jewish Center for Learning and Leadership	1,800
Class Action Network	16,000
Classical Chinese Puzzle Foundation	20,000
Clean Water Action	110,000
Clean Water Fund	120,000
Clergy and Laity United for Economic Justice of California	8,000
Climate Solutions	2,000
Coalition for the Homeless	20,000
Coalition of Institutionalized Aged and Disabled	1,000
COLAGE	1,500
Collaborative Urban Sculpture	40,000
Collective Eye	2,000
Collective Heritage Institute	38,000
College of Santa Fe / Star Axis	2,500
College Preparatory School	3,000
Colorado Music Festival	500
Colorado Progressive Coalition	65,000
Columbia County Youth Project	4,000
Columbia University	4,450
Columbia University In the City of New York	120,000
Comision Mexicana de Defensa y Promocion de los Derechos Humanos, A.C.	10,000
Comitato Per Il Parco A. Cederna	6,000
Comité Nacional Pro Defensa de la Flora y Fauna	50,000
Comité Régional de Solidarité des Femmes pour la Paix en Casamance	21,952
Common Assets Defense Fund	76,382
Common Counsel Foundation	92,000
Common Fire Foundation / 7th Empire Media	10,000
Commonwealth Club of California	100
Commonwealth Foundation, Inc. / Massachusetts Climate Action Network	5,000
Commonwealth School	70,000
Communications Consortium Media Center	175,000
Communities for Quality Education Research and Education Fund	100,000
Community Access, Inc.	1,000
Community Action Board of Santa Cruz County	25,000
Community Action New Mexico	1,500
Community Art Center	2,600
Community Change	2,000
Community Charter School of Cambridge / Options for Cambridge Students	7,000
Community Foundation for Monterey County	1,500
Community High School Foundation Inc. / Summit Preparatory High School	1,000
Community Housing Partnership	5,000
Community Music Center	5,000
Community Music Center of Boston	12,442
Community MusicWorks	500
Community Resource Exchange	50,000
Community School of the East Bay	10,000
Community United Against Violence	4,500
Community Voices Heard	30,000
Community Works	3,500
Community Youth Services	15,000
Computer Professionals for Social Responsibility	500
Comunicacion Indigena S. C.	13,500
Conard House	250

Statement 3

Form 990, Part II, Line 22a

Grants and Allocations from Donor Advised Funds

**TIDES FOUNDATION  
FEDERAL STATEMENTS**

Congregation Beth El	500
Congregation B'nai Jeshurun	60,000
Congregation Emanu-El	2,500
Conscious Learning Community of Boulder	20,000
Consejo de Pueblos Indígenas de Lalana, A.C.	5,000
Conservation International	5,000
Conservation Northwest	1,000
Conservation Society of Pohnpei	74,895
Conservation Voters New Mexico	15,000
Conservation Voters New Mexico Education	10,000
Consultative Group on Biological Diversity	5,250
Consultative Group on Biological Diversity / Health and Environmental Funders Network	5,000
Convivencia y Espacio Público A.C.	5,000
Co-op America	51,000
Coordenadora Ecumenica de Servicio	41,000
Coordination des ONG et Associations Féminines du Niger	5,853
Corporacion Proteje tu Playa	10,700
Corporate Accountability International	6,200
Corpus Christi Church	11,000
Corpus Christi School	5,000
Correctional Association of New York	150,250
Court Appointed Special Advocates	500
Crabgrass	500
Cross City Campaign for Urban School Reform	2,000
Cross Cultural Environmental Leadership Academy	50,000
CrossWalk America	24,000
Crude Accountability	10,000
Cumberland River Compact	550
Cystic Fibrosis Research	1,000
Dads and Daughters	1,000
Dance Theater Workshop	100,000
Danspace Project	100,000
Death Penalty Focus	2,000
Deep Democracy	2,500
Deep South Center for Environmental Justice	5,000
Defenders of Wildlife	1,000
Defenders of Wildlife Action Fund	20,000
Democracy Now!	15,000
Demos	15,000
Deschutes Basin Land Trust	5,100
Destiny Arts Center	30,000
Development Aid from People to People Children's Town	30,000
Development Alternatives with Women For a New Era	100,000
Dhamma Moli Vihar	23,455
Dharma Foundation	200
Disaster Tracking Recovery Assistance Center	5,445
Dispute Resolution Center of Thurston County	5,000
Doctors Without Borders USA	18,650
Donaldina Cameron House	4,500
Door Dog Music Productions	5,000
Dorchester Community Center for the Visual Arts	4,588
Downtown Community Television Center, Inc.	30,000
Downtown Little School	1,000
DrawBridge an Arts Program for Homeless Children	8,500
DreamCatchers	7,480
Dreams of Hope	1,000
Dreamweather Foundation	20,000
DreamYard	1,000
Drug Policy Alliance	5,000
Each One Reach One	5,000
Eakin Elementary Parent Teacher Organization	1,250

Statement 3

Form 990, Part II, Line 22a

Grants and Allocations from Donor Advised Funds



**TIDES FOUNDATION  
FEDERAL STATEMENTS**

Earth Care International	12,000
Earth Island Institute	500
Earth Island Institute / Bay Area Wilderness Training	10,000
Earth Island Institute / Campaign to Safeguard America's Waters	2,171
Earth Island Institute / Kids for the Bay	15,000
Earth Island Institute / Women's Global Green Action Network	5,100
Earth Matters Tennessee	500
Earthdance Creative Living Project, Inc.	2,000
Earthjustice	15,250
Earthlife Canada Foundation	5,000
Earthville Network	10,440
EarthWays Foundation / Amazon Wakani	450
EarthWays Foundation / Just Vision	7,500
Earthworks	42,000
East Bay College Fund	2,000
East Harlem Tutorial Program	10,000
Easton Mountain	5,000
Ebbetts Pass Forest Watch	4,000
Eckerd College	25,000
EcoLogic Development Fund	1,000,000
Ecology Center	100
Ecology Center / Bay Area Coalition for Headwaters	3,500
Economic Opportunity Institute	10,500
EcoPravo-Kyiv Environmental Law NGO	31,000
Ecosite La borie	1,500
Ecotrust	5,000
Ecotrust Canada	10,000
Educacion para la Paz, A.C.	2,500
Educational Video Center	5,000
Educators for Social Responsibility Metropolitan Area	5,000
El Pajaro Community Development Corporation	16,000
Elat Chayyim Jewish Retreat Center	5,400
Eldorado National Forest Interpretive Association	4,935
Ella Baker Center for Human Rights	35,500
Empire State Pride Agenda	25,000
Enchantment Theatre Company	5,000
Enterprise Corporation of the Delta	35,000
Enterprise Development International	1,500
Environmental Action Committee of West Marin	10,000
Environmental Defense	13,000
Environmental Justice Coalition for Water / Winnemem Wintu Tribe	5,000
Environmental Rights Center Bellona	10,094
Environmental Rights International	65,000
Environmental Support Center	17,000
Environmental Working Group	1,500
Environmentalism Through Inspiration an Non Violent Action / Code Pink	3,000
Episcopal Community Services of San Francisco	5,000
Equal Justice America	1,000
Equal Rights Advocates	165,000
Equality Now	112,020
Equilibres et Populations	100,000
Essential Information	400
Ethical Culture Fieldston Schools	100,000
Eutox	7,500
Eva Leah Gunther Foundation	5,000
Evangelicals for Social Action / Evangelical Environmental Network	1,000
Eveoke Dance Theatre	5,000
Exchange Club Family Center	1,000
Exit Art	100,000
Facing History and Ourselves National Foundation	4,000
Fahamu Trust	100,000

Statement 3

Form 990, Part II, Line 22a

Grants and Allocations from Donor Advised Funds

**TIDES FOUNDATION  
FEDERAL STATEMENTS**

Fair Economy Action Fund	2,500
Fairfax County Department of Family Services	500
Fairmount Park Conservancy	5,000
Fairness and Accuracy in Reporting	500
Families United for Racial and Economic Equality	20,000
Family and Children's Service	2,000
Family Caregiver Alliance	200
Family Restoration House	50,000
Family Support Center	5,000
Family Support Services of the Bay Area	3,000
Family Violence Prevention Fund	4,500
Far Brook School	5,000
Farm Aid	10,000
Fauna & Flora International	2,000
Feather River Resource Conservation District	2,650
Federación de Organizaciones de la Nacionalidad Kichwa del Napo	4,000
Federation of Alberta Naturalists	4,000
Fifth Avenue Committee	50,000
Fifth Avenue Committee / Prison Moratorium Project	5,000
Film Arts Foundation / Redbird Films	14,000
FilmAid International	15,000
Findhorn Foundation	28,202
Firefighters United for Safety, Ethics, and Ecology	2,000
Firelight Foundation	15,000
FIRST	25,000
First Nations Development Institute	20,000
First Place Fund for Youth	5,000
Fiscalia del Medio Ambiente / Ecosistemas	273,000
Flagstaff Activist Network	2,500
Flycasters Educational Foundation	12,000
FoodChange	25,000
Foolproof's American Voices	22,500
Forest Guardians	3,500
Forest Guild	5,000
Forest Hills Community House - Queens	10,000
Forest Service Employees for Environmental Ethics	3,000
ForestEthics	195,250
Fortune Society	2,000
Foundation for Dance Promotion	50,000
Foundation for International Dignity	15,000
Foundation for Monte del Sol Charter School	5,000
Foundation for National Progress	10,000
Foundation for Small Enterprise Economic Development	25,000
Foundation for Taxpayer and Consumer Rights	130,000
Foundation for the Chapel of Sacred Mirrors	28,000
Foundation for the Healing Force of the Amazon	59,000
Foundation for the Solidarity and Development of Women	2,000
FRAPNA Haute-Savoie	4,000
Free Library of Philadelphia Foundation	7,500
Free Press	11,000
Freedom from Hunger	75,000
Frente Nacional de Pueblos Indigenas	19,000
Friends and Foundation of the San Francisco Public Library	5,000
Friends of Clayoquot Sound	7,000
Friends of Del Norte	4,700
Friends of Friends Medical Support Fund	3,000
Friends of Guatemalan Children	1,000
Friends of Jerusalem College of Technology	5,000
Friends of the Clearwater	1,500
Friends of the Earth	8,000
Friends of the River Foundation	250

Statement 3

Form 990, Part II, Line 22a

Grants and Allocations from Donor Advised Funds

**TIDES FOUNDATION  
FEDERAL STATEMENTS**

Friends of the River Foundation / California Wild Heritage Campaign	1,500
Friends of the Swainson's Hawk	4,000
Friends of the United Nations	2,500
Friends of Washoe	10,000
Friendship Adult Day Services	1,000
Friendship Bridge	2,500
Friendship Community Outreach Center	500
From the Top	43,969
FSH Society, Inc.	30,000
Fund for the City of New York	5,000
Fund for the City of New York / Women's eNews	13,500
Fund for Indigenous Rights & the Environment	5,000
Fund for Wild Nature	7,500
Fundación ChasquiNet	21,000
Fundacion Ibera	10,000
Fundación para la Conservación y Desarrollo Amazónico-CODEAMA	2,000
Fundacion Servicio Paz y Justicia / Dialogo 2000 - Jubileo Sur/Americas	60,000
Funders for Lesbian and Gay Issues	500
Fusion Partnerships / Justice Maryland	36,367
Gainesville Area Rowing	500
Galiano Conservancy Association	14,935
Galiano Museum Society	9,500
Gamaliel Foundation	30,000
Gateway High School	4,000
Gay & Lesbian Advocates & Defenders	5,000
Gay Associated Youth	2,500
Gay Men's Health Crisis	200
Gender Public Advocacy Coalition	3,500
Georgians for Choice	10,000
Gerber/Hart Library	4,500
Germinal	6,000
Gill Operating Foundation	25,000
Giraffe Project	2,000
Girl Child Network	37,500
Girl Scouts of Housatonic Council	1,500
GirlSource	3,000
Give and Learn	10,000
Giving Open Access to Learning	10,000
Glide Memorial United Methodist Church	2,850
Global Exchange	12,567
Global Fund for Women	531,750
Global Greengrants Fund	372,000
Global Health Access Program	5,000
Global Policy Forum	750
Global Reporting Initiative	2,500
Global Response	3,000
Global Witness Foundation / Global Witness	500
GLSEN	14,500
God's Love We Deliver	1,500
Government Accountability Project	3,000
Grameen Foundation USA	27,500
Grassroots Alliance for Community Education - GRACE	40,000
Grassroots Leadership	52,050
Great Basin Mine Watch	150,000
Great Old Broads for Wilderness	2,000
Greater Boston Youth Symphony Orchestras	32,072
Greater Philadelphia Urban Affairs Coalition / Philadelphia Forward	2,500
Green Building Institute	550
Green Corps	250
Green Worker Cooperatives	10,000
Greenbelt Alliance	1,000

Statement 3

Form 990, Part II, Line 22a

Grants and Allocations from Donor Advised Funds

**TIDES FOUNDATION  
FEDERAL STATEMENTS**

Greenpeace Fund	1,000
Greensboro Justice Fund	250
Greenways for Nashville	3,250
Greenwich House	500
Grist Magazine	5,000
GROOTS International	7,500
Groundswell Community Mural Project	60,000
Grupo Mesofilo, A.C.	10,000
Habitat for Humanity - San Francisco	1,000
Habitat for Humanity International	500
Hale House Center, Inc.	10,000
Hampshire College	9,500
Hands On Nashville	3,500
Hartley Film Foundation	4,500
Harvard College	27,500
Harvard University	100
Hate Free Zone Campaign of Washington State	3,000
Hawken School	75,000
Haymarket People's Fund	1,000
Hazelden Foundation	3,000
Heart of America Northwest	75,000
Heifer International Foundation	4,000
Hells Canyon Preservation Council	1,000
Henry Street Settlement	2,500
Hesperian Foundation	52,000
Hidden Villa	250
High Country News	2,000
High Sierra Volunteer Trail Crew	4,963
Historic Edgefield	750
Historic Germantown Nashville	500
Historic Nashville	1,000
Hoffman Institute	900
Holding Our Own / Women's Building	7,000
Homeless Prenatal Program	20,000
Homeward Bound	250
Hong Kong Workers' Health Centre	45,000
Hopalong Animal Rescue	2,500
Horizons Foundation	1,000
House of the Children	25,000
Human Rights Campaign	1,500
Human Rights Watch	5,950
Humane Farming Association	3,000
Humane Society of the United States	8,000
Humboldt Area Foundation	1,000
Hunger and Poverty Reduction Foundation	40,050
Hunters Point Family	90,000
Hybrid Vigor Institute	1,000
Hygeia Foundation	2,000
ICPPC - International Coalition to Protect the Polish Countryside	5,750
Idaho Conservation League	1,500
Idaho Women's Network Research and Education Fund	10,000
iEARN-USA	5,000
Ikamva Labantu	26,600
Immaterial Incorporated	20,000
Impact Bay Area	10,000
In the Life Media, Inc.	5,750
Indian Law Resource Center	150
Indian Valley Housing Corporation	1,000
Indigenous Environmental Network	10,000
Indigenous Peoples Council on Biocolonialism	20,000
Indigenous Women's Network	12,000

**Statement 3**

**Form 990, Part II, Line 22a**

**Grants and Allocations from Donor Advised Funds**

**TIDES FOUNDATION  
FEDERAL STATEMENTS**

Infinity Gospel Ministries / Parents Who Care	10,000
InfOGM	7,500
Institute for Community Economics	10,075
Institute for Energy and Environmental Research	5,000
Institute for Food and Development Policy/Food First	1,500
Institute for Information Freedom Development	20,000
Institute for Jewish Spirituality	5,000
Institute for Local Self-Reliance	307,283
Institute for Unpopular Culture	1,500
Institute of Ecotechnics	2,500
Institute of Noetic Sciences	20,000
Inst. Guerrerense de Derechos Humanos A.C./ Red Guerrerense de Organ. Civiles de Derechos Humanos	25,000
Interfaith Center on Corporate Responsibility	2,000
Interfaze Educational Productions, Inc. / ZDfilms	10,000
INTERIGHTS	100,000
International Development Exchange	42,000
International Documentary Association / Mister Jones, LLC	2,500
International Forum on Globalization / Oakland Institute	8,000
International Funders for Indigenous People	10,000
International Gay and Lesbian Human Rights Commission	4,500
International Honors Program	10,000
International Humanities Center / Healing the Roots Foundation	2,500
International Humanities Center / Voter Action	275,000
International Humanities Center / WildPlaces	4,790
International Indian Treaty Council	1,000
International Media Project / National Radio Project	12,000
International Museum of Women	400,000
International Relations Center	75,000
International Rescue Committee	1,000,250
International Rescue Committee / Women's Commission for Refugee Women and Children	1,000
International Rivers Network	100
International Women's Health Coalition	1,000
Internews Interactive	10,000
Interns for Peace	5,000
Intersection for the Arts	1,000
Intersex Society of North America	6,000
Into Afrika, Inc. / Shea Yeleen International, Inc.	10,000
Iowa Citizen Action Network	25,000
Iowa Citizen Action Network Education Foundation	35,000
Iraq and Afghanistan Veterans of America	4,000
Irish Peatland Conservation Council	4,000
Island Conservation	50,000
Island Hospice and Bereavement Service	14,700
Israel Policy Forum	26,000
Israel Venture Network	6,000
Jamestown Community Center	25,000
Jananeethi	10,000
Jane Addams Peace Association / Women's International League for Peace and Freedom	1,000
JATAM (Mining Advocacy Network)	8,000
Jazz at Lincoln Center	3,333
Jazzschool	200
Jewish Community Center on the Palisades	7,000
Jewish Community Foundation of Colorado	5,000
Jewish Council for Public Affairs / Coalition on the Environment and Jewish Life	16,090
Jewish Day School	500
Jewish Family and Children's Services	12,000
Jewish Federation of Greater Phoenix	1,000
Jewish Funders Network	5,500
Jewish Funds for Justice	9,500
Jewish Organizing Initiative	250
Jewish Peace Lobby	250

Statement 3

Form 990, Part II, Line 22a

Grants and Allocations from Donor Advised Funds

**TIDES FOUNDATION  
FEDERAL STATEMENTS**

Jewish Voice for Peace	6,500
Joe Goode Performance Group	250
Joy of Sports Foundation	2,500
Just Food	20,000
Just Transition Alliance	10,000
Justice Matters Institute	6,000
Justice Now / Critical Resistance	2,000
Justice Through Music Project	60,000
Juvenile Diabetes Research Foundation	15,000
Juvenile Justice Project of Louisiana	80,000
KALW 91.7 FM	250
Kartemquin Educational Films	3,000
Karuna Center for Peacebuilding	15,000
Kearny Street Workshop	5,000
Kehillah Community Synagogue / Jewish Youth For Community Action	1,000
Kentucky Environmental Foundation / Coming Clean	5,000
Kid Serve Youth Murals	18,000
KID smART	5,000
Kidpower Teenpower Fullpower International	15,000
Kids on Broadway of Santa Cruz County	3,500
Kids' Turn	500
Kivel Campus of Care	500
Klamath Forest Alliance	5,000
Klamath Siskiyou Wildlands Center	2,000
Kono District Women's Multi-Purpose Cooperative	12,997
KQED	10,500
Kronos Performing Arts Association	10,000
KSER Foundation	75
KUOW Public Radio	100
KWMR - West Marin Community Radio	1,000
La Casa de las Madres	5,000
La Jollans for Clean Government	24,000
La Mujer Obrera	45,000
La Peña Cultural Center	500
Lambda Legal Defense and Education Fund	2,500
Lambi Fund of Haiti	2,000
Lamplighters Opera West Foundation	100
Land Trust for Tennessee	250
Land Trust of Santa Cruz County	15,000
Landessportfischerverband Schleswig Holstein e.V.	7,000
Larkin Street Services	5,000
Las Palomas de Taos	2,500
Latin School of Chicago	500
Lawyers for Children	500
Leadership Conference on Civil Rights Education Fund	49,000
League of Conservation Voters	101,000
League of Conservation Voters Education Fund	371,000
League of Education Voters of America	50,000
League of Independent Voters	10,000
League of Young Voters Education Fund	195,750
League to Save Lake Tahoe	500
Leather Archives and Museum	3,000
Legal Action Center of the City of New York	15,000
Legal Services for Prisoners with Children / Prison Activist Resource Center	2,500
Legs on the Wall, Inc.	1,000
Leo Baeck Temple	5,000
Les Amis de la Terre	7,500
Les Amis Du Vent	5,000
Les Blongios, la nature en chantiers	1,500
Lewis and Clark College	41,500
Liberty Hill Foundation	159,250

Statement 3

Form 990, Part II, Line 22a

Grants and Allocations from Donor Advised Funds

**TIDES FOUNDATION  
FEDERAL STATEMENTS**

Lindsay Wildlife Museum	500
Link Media	25,000
Link to the Environment	10,000
Linnaea Farm Society	200
Live Oak Institute	5,400
Live Out Loud	750
Living Archives, Inc.	15,000
Living Rivers	2,000
Loco Bloco Drum and Dance Ensemble	30,000
Lorian Association	7,500
Los Angeles Gay and Lesbian Center	3,600
Los Cimientos Alliance	1,000
Los Padres ForestWatch	4,700
Louisiana Bucket Brigade	5,000
Louisiana Environmental Action Network	25,000
Lowell School	4,500
Lower Manhattan Cultural Council	60,000
Lutheran Episcopal Services in Mississippi	5,000
Lynn University	200,000
Ma'agal Hakshavah Amuta	15,000
Maasai Environmental Resource Coalition	10,000
Maasai Girls Education Fund	15,000
MADRE	3,000
Magdalene	1,500
Magnolia Community Club	2,000
Mahila SEWA Trust	1,000
Main Stay Therapeutic Riding Program	5,000
Maine Initiatives	75,000
Mainland Enhancement of Salmonid Species Society	10,000
Manalive Violence Prevention Programs	4,500
Marcus A. Foster Educational Institute	50,000
Maret School, Inc.	10,000
Marin Agricultural Land Trust	2,000
Marin Charitable Association	10,000
Marin Interfaith Task Force on the Americas / Prevention International: No Cervical Cancer	1,500
Marine Conservation Biology Institute	5,000
Marion Institute	9,000
Marlboro College	2,000
Marmot Recovery Foundation	250
Martha O'Bryan Center	2,500
Matthew S. Hisigere Film Foundation	1,000
Massachusetts Institute of Technology	2,500
Maternity Care Coalition of Greater Philadelphia	2,500
Mattole Restoration Council	5,250
Maui Tomorrow	20,000
Max Warburg Courage Curriculum	5,429
MAZON: A Jewish Response to Hunger	500
McKelvey Educational Foundation	1,575,000
McKenzie River Gathering Foundation	30,000
Media Alliance	2,000
Media Matters for America	30,000
Medieval Japanese Studies Foundation	35,000
Mental Health Association of Nassau County	12,500
Mercy Corps	26,000
Meretz USA	500
MerTerre	5,000
Metropolitan Museum of Art	500
Metropolitan Opera Association	8,500
Midwest Academy	2,000
Midwest States Center	40,000
Milwaukee Art Museum	15,000

Statement 3

Form 990, Part II, Line 22a

Grants and Allocations from Donor Advised Funds

**TIDES FOUNDATION  
FEDERAL STATEMENTS**

Mindset Network	65,000
Minnesota Council of Nonprofits	40,000
Miracle Kids	1,000
Mission Cultural Center	2,000
Mississippi State Conference NAACP	18,550
Missouri Citizen Education Fund	65,000
Missouri Progressive Vote Coalition	5,000
Mith Samlanh	15,000
Mobilization Against AIDS International	500
Montana Conservation Voters	60,000
Montana Environmental Information Center	2,000
Montana Land Reliance	1,500
Montana Smart Growth Coalition	1,500
Montana Wilderness Association	5,200
Montana Wilderness Association / Friends of the Rocky Mountain Front	500
Monthly Review Foundation	3,000
Mothers Acting Up / Mainstreet Moms Organize or Bust	2,000
Mount Shasta Bioregional Ecology Center	4,000
Mountain Meadows Conservancy	5,000
Mountain Riders	4,300
Mountain Wilderness International	5,000
Mountainfilm	2,000
Mouvement pour les Droits et le respect des Générations Futures	7,500
Movement Research	50,000
Moving Traditions	1,080
Ms. Foundation for Women	623,000
Mujeres Unidas y Activas	2,400
Mujeres Unidas y Activas	2,400
Muloma Women's Development Association	29,576
Multnomah County School District #1	10,000
Museum of Children's Art	38,000
Museum of Modern Art	125
Musicians United for Superior Education	15,000
Musico a Musico	500
Mystic Learning Center, Inc.	1,347
Na Lei Hulu I Ka Wekiu	10,000
NAACP Legal Defense and Educational Fund	350
NAACP National Voter Fund	22,000
Nagarik Aawaz	15,000
Nanish Shontie	3,000
NARAL Pro-Choice America	5,000
NARAL Pro-Choice America Foundation	3,000
NARAL Pro-Choice New Mexico Foundation	1,700
Naropa University	4,500
Nashville Civic Design Center	3,025
Nashville Homeless Power Project	1,000
Nashville Peace and Justice Center	1,000
Nashville Rescue Mission	100
Nashville Shakespeare Festival	1,000
Nashville Symphony	1,000
National Accountability Group	30,753
National Advocates for Pregnant Women	25,000
National Alliance on Mental Illness	2,500
National Association for the Advancement of Colored People	100
National Association of People With AIDS	2,000
National Audubon Society	20,000
National Center for Conservation Science and Policy	2,000
National Center for Law and Economic Justice	5,000
National Center for Lesbian Rights	4,000
National Center for Policy Research for Women and Families	380,000
National Child Research Center	4,000
National Coalition to Abolish the Death Penalty	55,000

Statement 3

Form 990, Part II, Line 22a

Grants and Allocations from Donor Advised Funds



**TIDES FOUNDATION  
FEDERAL STATEMENTS**

National College of Natural Medicine	40,000
National Committee for Responsive Philanthropy	2,675
National Gallery of Art	1,000
National Gay and Lesbian Task Force Foundation	8,000
National Housing Law Project	1,000
National Immigration Project of the National Lawyers Guild	2,000
National Latina Institute for Reproductive Health	2,500
National Multiple Sclerosis Society of Northern California	250
National Network for Immigrant and Refugee Rights	20,000
National Organization for Women Foundation	1,000
National Organizers Alliance	6,000
National Outdoor Leadership School	4,000
National Partnership for Women and Families	1,500
National Wildlife Federation	199,000
National Wildlife Refuge Association	20,000
National Youth Advocacy Coalition	5,000
Native Action	12,000
Natural Resources Defense Council	93,500
Nature Conservancy of Arkansas	2,000
Nature Conservancy of New York	10,000
Nautilus Institute	1,000
Nevei Kodesh: Jewish Renewal Community of Boulder	13,076
New Democracy Project	10,000
New England Forestry Foundation	100,000
New Israel Fund	39,500
New Jersey SEEDS	250
New Langton Arts / Perquin School of Art and Open Studio	10,000
New Leaf: Services for Our Community	10,000
New Mexico Community Foundation	60,000
New Mexico Recycling Coalition	2,000
New Mexico Wilderness Alliance	2,000
New York City AIDS Housing Network	20,000
New York City Ballet	1,500
New York City Center	500
New York City Lesbian, Gay, Bisexual and Transgender Community Center	750
New York Foundation for the Arts	60,000
New York Foundation for the Arts / Zula Pearl Films	55,882
New York Immigration Coalition	35,000
New York Jobs with Justice	15,000
New York Women's Foundation	200,000
Nonviolence International	20,000
Nonviolence International	20,000
Nonviolent Peaceforce	17,000
NORML Foundation	24,000
North Shore Community Land Trust	15,000
North Star Fund	300,000
Northern Rockies Conservation Cooperative	62,400
Northside Common Ministries	250
Northwest Institute for Bioregional Research	15,000
Northwest Labor and Employment Law Office	50,000
Norwegian Refugee Council	300,000
Oak Hill School	5,000
Oasis Center	1,000
Oasis Worship Centre / Camp Great Escape	500
Oberlin Dance Collective	1,000
Occidental Arts and Ecology Center	5,000
Ocean Awareness Project, Inc	6,000
Odyssey Youth Center	2,500
Oglala Lakota College	100
Ohio Citizen Action	30,000
Ohio State University Foundation / Kirwan Institute for the Study of Race and Ethnicity	349

Statement 3

Form 990, Part II, Line 22a

Grants and Allocations from Donor Advised Funds

**TIDES FOUNDATION  
FEDERAL STATEMENTS**

Oil and Gas Accountability Project	8,000
Ojai Foundation	2,300
On The Move	37,000
One Fire Development Corporation	100,000
One River Foundation	540
One World Children's Fund	3,000
ONG Rayouwan Mata	12,490
Open Field Foundation / Fertile Ground	1,000
Openarms Youth Project Inc.	4,000
Operation Hope of Fairfield	3,000
Oral Lee Brown Foundation	500
Oregon Jewish Community Foundation	5,000
Oregon Natural Desert Association	1,000
Oregon Natural Resources Council	2,000
Orenda Institute	9,500
Organe de Sauvetage Ecologique	6,000
Organize! Training Center / San Francisco Freedom School	13,000
Oriki Theater	2,000
Orme School	500
Osjecki Zeleni	2,000
OUTKITSAP	5,000
Outright Vermont	3,000
Overnight Productions	5,000
Oxbow School	1,500
Oxfam America	1,800
P.O.C.O.V.I.	4,500
Pachamama Alliance	6,080
Pacific Forest Trust	1,500
Pacific Lutheran University / KPLU Public Radio	75
Pacifica Foundation	5,000
PACOS Trust	20,000
Palo Alto Downtown Streets Team	5,000
Pan African Arts Society	1,000
Parents, Families & Friends of Lesbians and Gays	5,000
Parkinson's Council	7,500
Partners In Health	1,000
Partnership Action for Community Empowerment	42,495
Partnership for Immigrant Leadership and Action / Mobilize the Immigrant Vote California Collab.	300,500
PassageWays Institute	10,000
Pathfinder Charter High School	1,500
Paul Taylor Dance Foundation	1,000
Peace Action Education Fund	5,000
Peace Action Education Fund / National Religious Campaign Against Torture	1,000
Peace Brigades International USA	1,000
Peace Development Fund	51,600
Peace Development Fund / Class Action Network	1,500
PeaceJam Foundation / Nobel Women's Initiative	15,000
Peggy Browning Fund	5,000
PEN/Faulkner Foundation	2,400
Penobscot East Resource Center	100,000
People for the American Way	110,000
People for the American Way Foundation	237,000
People's Trust for Endangered Species	5,000
Peralta Parent Teacher Group	5,000
Performance Space 122	100,000
Performing Arts Workshop	17,000
Permacultura America Latina	2,500
Pesticide Action Network Germany	7,500
Pesticide Action Network North America	26,000
Pesticide Action Network Regional Centers	1,000
Philadelphia Museum of Art	2,500

**Statement 3**

**Form 990, Part II, Line 22a**

**Grants and Allocations from Donor Advised Funds**

**TIDES FOUNDATION  
FEDERAL STATEMENTS**

Phipps Community Development Corporation	200
Physicians for Human Rights -- Israel	18,000
Physicians for Social Responsibility Los Angeles / Dynamic Workers, LLC	15,000
Picas y Platicas, A.C.	5,000
PICO LIFT	2,500
Planetnetwork	71,750
Planned Parenthood Federation of America	22,000
Planned Parenthood Golden Gate	5,000
Planned Parenthood of Arkansas and Eastern Oklahoma	25,000
Planned Parenthood of Connecticut	3,000
Planned Parenthood of Western Washington	200
Planned Parenthood Shasta-Diablo	3,000
Ploughshares Fund	11,500
Point Lobos Association	100
Political Research Associates	61,000
Population Connection	2,000
Positive Futures Network	250
Potlatch Fund	15,000
Powerful Schools	13,000
Praxis Institute for Early Childhood Education	10,000
Precita Eyes Muralists	12,000
Predator Conservation Alliance	1,000
Presidio Community YMCA	5,000
Presidio Hill School	5,000
pro MONT-BLANC	4,000
Progress Foundation	5,000
Progress Unity Fund / International A.N.S.W.E.R. Coalition	2,000
Progress, Inc.	250
Progressive America Fund	100,000
Progressive America Fund / New York Community Leadership Institute	20,000
Progressive Maryland	10,000
Progressive Maryland Education Fund	25,000
ProgressNow	105,000
ProgressNow Action	30,000
Project Open Hand	7,000
Project Vote	230,000
Project Vote Smart	500
ProLiteracy Worldwide / Cambodia World Family	5,000
Promotion et Appui aux Initiatives Feminine	2,500
Pronatura, A.C.	17,000
Protection et Defense de L'Environnement de Bourge-Fidele	4,000
Providence Foundation of San Francisco	30,000
Provisions Learning Project	20,000
Proyecto de Derechos Economicos Sociales y Culturales, AC	10,000
Public Art Fund, Inc	100,000
Public Campaign	6,000
Public Conversations Project / The Faith Quilts Project	11,470
Public Education Network	5,000
Public Health Foundation Enterprises / National Conference for Community and Justice	1,000
Public Health Institute, Inc	50,000
Public Interest Pictures	20,000
Public Interest Projects / VoterPunch	25,000
Public Policy and Education Fund of New York	90,000
Public Radio Capital	25,000
Quad Citians Affirming Diversity	5,000
Rabbis for Human Rights	5,000
Rachel's Network, Inc. / WELL Network	1,000
Radiance Healing Institute	1,000
Raincoast Conservation Society	10,000
Rainforest Action Network	32,400
Raphael House of San Francisco	300

Statement 3

Form 990, Part II, Line 22a

Grants and Allocations from Donor Advised Funds

**TIDES FOUNDATION  
FEDERAL STATEMENTS**

Raw Art Works	30,498
Reach the Children School	1,500
Red Bull Theater	2,000
Red de Accion sobre Plaguicidas y Alternatives en Mexico, A.C.	10,000
Red Oaxaquena de Derechos Humanos	35,000
Reed College	12,000
Refugee Women's Network	41,000
Regents of the U C Berkeley Office of the President / Cal Performances at the U C Berkeley	2,500
Relief International	1,000
Renaissance Parents of Success	30,000
Rescue Mission Zambia - RMZ	11,000
Research to Prevent Blindness	250
Réseau des Femmes de la Région du Fleuve Mano	35,198
Resist	10,000
Resource Media	30,000
Restaurateurs Sans Frontieres	50,000
Rete Donne Brianza	6,000
Rethinking Schools	17,000
Revolving Museum	19,061
Rhode Island Family Life Center	42,401
Richard Hugo House	5,000
Richmond Area Multi-Services	10,000
Rights Action	3,000
River Gallery School	25,000
River of Words	200
Riverkeeper	5,000
Robert F. Kennedy Memorial	20,000
Robert F. Wagner Graduate School of Public Service at NYU	19,500
Rockefeller Family Fund / Environmental Grantmakers Association	1,500
Rockefeller Philanthropy Advisors	150,000
Rockwood Leadership Program	7,500
Rocky Mountain Institute	2,750
Romero Institute	82,500
Room to Read	2,000
Rose Foundation for Communities and the Environment	10,000
Rosenberg Fund for Children	10,000
Rotary Foundation of Rotary Internationa	5,838
Rudolf Steiner Foundation	1,581,000
Rudolf Steiner Foundation / Small Planet Fund	1,000
Rural Health Education Alliance	2,000
Rural Quality Coalition Foundation	5,000
Rural Women's Movement	36,171
Sacramento Loaves and Fishes	1,400
Sacred Birthing Foundation	5,000
Saint Paul's School	15,500
Salama Urban Ministries, Inc.	2,500
Salt Lake City Bicycle Collective	1,000
San Bruno Mountain Watch	3,000
San Diego Foundation for Change	1,200
San Diego Tracking Team	3,750
San Francisco AIDS Foundation	250
San Francisco Ballet Association	3,620
San Francisco Bar Association Volunteer Legal Services Program	4,500
San Francisco Bar Association Volunteer Legal Services Program / Coop. Restraining Order Clinic	4,500
San Francisco Child Abuse Prevention Center	35,000
San Francisco Children's Art Center	1,500
San Francisco Day School	10,000
San Francisco Early Music Society	5,000
San Francisco Education Fund	3,100
San Francisco Food Bank	15,000
San Francisco Jewish Film Festival	2,000

Statement 3

Form 990, Part II, Line 22a

Grants and Allocations from Donor Advised Funds

**TIDES FOUNDATION  
FEDERAL STATEMENTS**

San Francisco Museum of Modern Art	100
San Francisco Nature Education	1,500
San Francisco Network Ministries Housing Corporation	2,000
San Francisco Parks Trust	55,000
San Francisco Performances	2,500
San Francisco Performing Arts Library and Museum	100
San Francisco Women Against Rape	3,000
San Francisco Zen Center	250
San Mateo County Community College KCSM-FM Radio Station	500
Santa Cruz Ethnic Arts Network / Cayuga Vault	15,000
Santa Cruz Ethnic Arts Network / Mir & A Company	3,000
Santa Fe Mountain Center, Inc	10,000
Satellite Housing	500
Save Darfur Coalition	3,530,000
Save The River	5,150
School of Unity and Liberation	7,000
School Year Abroad	500
Schools Online	1,000
Scottsdale Cultural Council	7,500
Sculpture Center	25,000
Seattle Young People's Project	3,000
Securing America's Future Energy Foundation	25,000
Seeds of Peace	6,750
Servicemembers Legal Defense Network	250
Servicio Paz y Justicia - Mexico	10,000
Servicio Paz y Justicia en America Latina	12,000
Servicios Para Una Educación Alternativa	15,000
Servicios Y Asesoría Para La Paz, AC	20,000
Seventh Generation Fund	10,000
Shang Shung Institute Austria for Tibetan Studies	2,500
Shaping New Worlds, Inc.	3,000
Shared Interest	10,500
Shasta Cascade Educational Foundation	3,800
Sheridan School	40,000
Shipyard Trust for the Arts	10,000
Shirkat Gah - Women's Resource Centre	3,200
Shotgun Players	2,000
Sierra Club	126,500
Sierra Club Foundation	78,000
Sierra Club Foundation / Sierra Club-San Francisco Bay Chapter	500
Sierra Club of British Columbia Foundation	8,000
Sierra Madre Alliance	20,000
Sierra Nevada Alliance	1,000
Silicon Valley Toxics Coalition	295,000
Simmons College / Gustavus Myers Center	1,000
Sin Fronteras I.A.P.	10,000
Sinergia No'j	180,000
Sister Island Project	75
Sitka Conservation Society	42,000
Smack Mellon Studios	10,000
Small World Action Projects Ltd.	5,000
Smile Train	1,000
Smith College	500
Smith River Alliance	15,000
SOAR Foundation	2,000
SOC Education Fund / Southern Organizing Committee for Economic and Social Justice	75
SOC International	10,000
Social Justice Fund Northwest	66,000
Social Venture Partners	20,000
Society for Safe and Caring Schools and Communities / Out Is In Project	2,400
Socrates Sculpture Park	10,000

Statement 3

Form 990, Part II, Line 22a

Grants and Allocations from Donor Advised Funds

**TIDES FOUNDATION  
FEDERAL STATEMENTS**

Soho Partnership	2,000
Soi Dog Foundation	3,000
Soil Association	7,701
Sojourners	60,000
Solar Electric Light Fund	1,000
Solar Outdoor Lighting, Inc.	25,000
SomArts / United Playaz Violence Prevention and Leadership Development Program	25,000
Sonoma County Center for Peace and Justice / Gandhi Peace Brigade	1,000
Sophia Project	2,500
SOS Loire Vivante	3,000
Sources et Rivieres du Limousin	7,500
South Africa Partners	5,000
South Jersey AIDS Alliance	15,000
South Whidbey Children's Center	500
South Whidbey Youth Center	250
Southeast Alaska Conservation Council	51,000
Southeast Regional Economic Justice Network	15,000
Southern Environmental Law Center	2,000
Southwest Research and Information Center	20,000
Southwest Research and Information Center / Canyon Neighborhood Association Legal Fund	1,000
Southwest Research and Information Center / Eastern Navajo Dine Against Uranium Mining	2,500
Southwestern College	2,500
Spirit in Action	55,000
St. Anthony Foundation	5,000
St. James Infirmary	2,000
St. John's Educational Thresholds Center	30,000
St. Nicholas Children's Hospice	30,000
Starr King School	5,468
Stichting European Archive	50,000
Stichting ter Bevordering van Consultatie aan Sociale Systemen	25,000
Stichting Women's Initiatives for Gender Justice	100,000
Stone Soup	2,000
Stonewall Community Foundation	750
Stop AIDS Project	5,000
Stop Fessenheim	5,000
Summer on the Hill	5,000
Summerbridge of Greater Philadelphia	3,500
Surfers Against Sewage	2,500
Susila Dharma International Association / American Overseas Medical Aid Association	5,000
Sustainable South Bronx	50,000
Swarthmore College	3,000
SweatFree Communities	10,000
Swords to Plowshares Veterans Rights Organization	5,000
Sylvia Rivera Law Project	2,500
Synergos Institute	50,000
Synergy Dance And Healing Arts Center	10,000
TakeBackCA.org	2,000
Taxpayers for Common Sense	25,000
Teach for America Phoenix	2,500
Teaching for Change	10,000
Technology Access Foundation	5,000
Telos Project	2,500
Temple Beth Shalom	2,500
Tennessee Environmental Council	1,100
Tennessee Parks and Greenways Foundation	500
Tennessee Volunteer Lawyers for the Arts	1,000
TEWA for Support	40,000
Texas Criminal Justice Coalition	15,000
Thailand Burma Border Consortium	10,000
The Arnold P. Gold Foundation	55,000
The Bay Institute of San Francisco	17,500

Statement 3

Form 990, Part II, Line 22a

Grants and Allocations from Donor Advised Funds

**TIDES FOUNDATION  
FEDERAL STATEMENTS**

The Big Sur Land Trust	5,000
The Cedars of Marin	3,000
The Century Foundation	500
The Children's Museum for the Arts	2,500
The Church of the Virgin Mother	24,000
The Crowden School	3,000
The Diversity Center	20,000
The Enterprise Center	25,000
The Eureka International Film Festival	2,500
The Field	57,900
The Gaia Foundation	1,000
The Galiano Club	9,479
The Garden Project	5,000
The Humanity Initiative	15,000
The Humsafar Trust	2,000
The ICA Group	50,000
The Interfaith Alliance Foundation	200
The Jewish Community Center in Manhattan	300,000
The Jewish Foundation for the Righteous	5,000
The Kitchen	100,000
The Land/an art site / Citizens for Alternatives to Radioactive Dumping	5,000
The Lands Council	2,000
The Life Link / Santa Fe Clubhouse	1,000
The Nature Conservancy International	4,500
The Nature Conservancy of California	22,500
The New World Foundation	15,000
The Ordinary People Society	60,620
The Parenting Project	250
The Pendulum Project	2,100
The People's Grocery	10,000
The Pew Charitable Trusts / Canadian Boreal Initiative	1,000
The Point Foundation	15,000
The Power of Hope	19,000
The Putney School	1,500
The Riley Center of St. Vincent de Paul Society	4,500
The Ruckus Society	39,500
The Samdhana Institute Indonesia / Sawit Watch Indonesia	6,000
The Schott Foundation for Public Education	200,000
The Sentencing Project / Real Cost of Prisons Project	25,000
The Shefa Fund	2,500
The Siloe Project	2,500
The Storydancer Project	2,500
The Tamarind Foundation	500
The Tomás Rivera Policy Institute	1,000
The United Jewish Appeal-Federation of Jewish Philanthropies of New York	5,000
The Wilderness Society	2,000
The Women's Building	16,000
Think New Mexico	10,000
Third Sector New England / Resource Generation	17,500
Third Wave Foundation	57,500
Threshold Foundation	157,100
Tibet Fund	50,000
Tibet Humanitarian Project	10,000
Tides Canada Foundation	5,500
Tides Center / Bay View Hunters Point Community Fund	50,000
Tides Center / Center for Independent Media	1,000
Tides Center / Center for Small Business and the Environment	25,000
Tides Center / Center for Social Inclusion	110,000
Tides Center / Clean Production Action	135,000
Tides Center / Collaborative Fund for HIV Treatment Preparedness	100,000
Tides Center / Color of Democracy	20,000

Statement 3

Form 990, Part II, Line 22a

Grants and Allocations from Donor Advised Funds

**TIDES FOUNDATION  
FEDERAL STATEMENTS**

Tides Center / dropping knowledge international	400,000
Tides Center / Environmental Defender Law Center	20,000
Tides Center / First Peoples Worldwide	400,000
Tides Center / Giving on the T	12,000
Tides Center / Global Community Monitor	10,000
Tides Center / Grantmakers Without Borders	5,500
Tides Center / HA15: A Gathering of Hearts Illuminating Compassion	10,000
Tides Center / Human Impact Partners	15,000
Tides Center / Lafayette School Mentoring Project	100,000
Tides Center / Mailman Institute	335,500
Tides Center / Millennium Project	1,500
Tides Center / New Majority Education Fund	20,000
Tides Center / New Story Project	35,008
Tides Center / OASIS (Offering Arts to our Sisters in SOMA)	15,000
Tides Center / Organizer's Forum	5,000
Tides Center / Peaceful Tomorrows	60,000
Tides Center / Rockridge Institute	6,000
Tides Center / Shalom Bayit	4,500
Tides Center / Social Venture Network	3,000
Tides Center / Stop Global Warming Virtual March on Washington	213,000
Tides Center / The Beatitudes Society	52,000
Tides Center / The Opportunity Agenda	1,000
Tides Center / Third Way Institute	50,000
Tides Center / Tule Elk Park	3,000
Tides Center / Visual Arts/Language Arts: A Project for Kids in the Public Schools	7,500
Tides Center / Women's Community Clinic	5,000
Tides Center / Women's Rights International	20,000
Tides, Inc.	50,000
Tides, Inc. / The NonprofitCenters Network	20,000
Today's Women International Network	60,000
Topf Center for Dance Education	11,263
Touchable Stories	5,000
Town Hall Coalition	5,000
Townhouse Gallery of contemporary art	20,000
Tracking Project	2,500
Transgender Law Center	5,000
Transparency International USA	2,500
Transportation and Land Use Coalition / Friends of Coyote Hills and Fremont	5,000
Treatment Action Group	1,600
Treepeople, Inc.	1,000
Trees for Life	1,000
Trevor Project	2,500
Trickle Up Program	25,000
Tricycle Foundation	300
Trilogy: An Opera Company	5,000
Tri-Valley CAREs (Communities Against a Radioactive Environment)	2,500
Troubadour	4,053
Trout Unlimited	9,000
Trust for Indigenous Culture and Health	15,000
Tsadik Foundation	40,531
Tulane University	30,000
Tuolumne River Preservation Trust	500
Twenty First Century Foundation	5,000
Two Rivers Sangha	36,000
UAHC Camp Swig - Institute	500
UCLA Foundation / The Williams Institute on Sexual Orientation Law and Public Policy	1,000
Union of Concerned Scientists	22,500
United Farm Workers of America	2,000
United for a Fair Economy	53,000
United Houma Nation	2,500
United South End Settlements	11,263

Statement 3

Form 990, Part II, Line 22a

Grants and Allocations from Donor Advised Funds



**TIDES FOUNDATION  
FEDERAL STATEMENTS**

United States Squash Racquets Association	8,333
University of California San Francisco	250
University of California, Berkeley Foundation	5,000
University of Hawaii Foundation	10,000
University of Massachusetts Lowell	151,705
University of New Mexico	8,000
University of New Mexico Foundation	5,000
University of New Mexico School of Medicine	15,000
University of Oregon Foundation	250
University of Washington Foundation	8,500
University of Washington Foundation / Seattle MESA	20,000
Urban Improv	33,271
Urban Justice Center	40,000
Urban Justice Center / Families for Freedom	20,000
Urban Resource Systems, Inc.	7,500
Urban Services YMCA of S.F. / Bayview Hunters Pt. Mobilization for Adolescent Growth in Our Communities	25,000
Urgent Action Fund Africa	20,000
Urgent Action Fund for Women's Human Rights	40,000
US Fund for UNICEF	20,000
US Green Council Building - Middle Tennessee Chapter	500
USAction	50,000
USAction Education Fund	353,000
Utah Pride Center	70,000
Utah State University	25,000
Utah Wetlands Foundation / Utah Linking Communities	2,000
UW World Series	2,500
UWM Foundation / 371 Productions	50,000
Valhalla Wilderness Society	7,000
Vallecitos Mountain Refuge	1,000
Vanderbilt University	750
Vanguard Public Foundation	42,000
Vanguard Public Foundation / Quality Public School Education as a Civil Right	20,000
Venus Rising	24,000
Victim Witness Assistance Program	4,500
Vietnam Veterans of America Foundation	500
Vietnamese Youth Development Center	35,000
Virginia Organizing Project	60,000
Visual Aid	1,000
ViviendasLeón	6,000
Vrouwenopvang Amsterdam	25,000
WAFRICA	14,957
Wahana Lingkungan Hidup Indonesia Foundation	12,000
Waldorf School Association of Boulder	2,008
War Child	215,000
Washington Area Women's Foundation	5,550
Washington Buddhist Vihara	500
Washington Conservation Voters	11,000
Washington Environmental Council	500
Washington Institute for Near East Policy	10,000
Washington Opera	25,000
Washington Physicians for Social Responsibility	1,000
Weber State University	1,000
Wellstone Action Fund	100,000
West Coast Environmental Law Research Foundation	7,000
West Coast Feminist Health Project	500
West County Toxics Coalition	5,000
West Mt. Airy Neighbors	1,500
West Valley Child Crisis Center	1,000
Western Lands Project	15,000
Western Organization of Resource Councils	15,000
Western Resource Advocates	10,000

Statement 3

Form 990, Part II, Line 22a

Grants and Allocations from Donor Advised Funds

**TIDES FOUNDATION  
FEDERAL STATEMENTS**

Western Resource Advocates / Rocky Mountain Energy Campaign	10,000
Western States Center	95,000
Westside Community Services	35,000
Whidbey Camano Land Trust	1,100
Whidbey Institute	2,500
Whidbey Island Center for the Arts	400
White Columns	100,000
White Earth Land Recovery Project	42,100
Wild Mountains Trust	5,000
WildCare Terwilliger Nature Education and Wildlife Rehabilitation	4,000
Wildlife Forever	18,000
Wildsight	7,000
Wildwood Conservation Foundation	5,000
Willamette Valley Law Project / Pineros y Campesinos Unidos del Noroeste	16,000
Williams College	200
Wilma Theater	7,500
Wisconsin Conservation Voters Institute	88,000
Wise Fool New Mexico	2,000
Witness	4,000
Witness for Peace	4,000
WNYC Radio	1,000
Women Donors Network	89,285
Women for Women International	15,000
Women for Women's Human Rights - New Ways	50,000
Women Make Movies	20,000
Women of Color Resource Center	3,500
Women Organized To Make Abuse Nonexistent	4,500
Women Organized to Respond to Life-threatening Diseases	2,000
Women Organizing for Change in Agriculture and Natural Resource Mangage	20,000
Women's Educational Media	3,500
Women's Empowerment Network	500
Women's Foundation of California	10,000
Women's Funding Alliance	30,000
Women's Funding Network	25,000
Women's Learning Partnership for Rights Development and Peace	80,000
Women's Voices. Women Vote	530,000
Womens Way	3,500
Women's World Summit Foundation	18,000
Woodbine Community Organization	450
Working Films	27,000
Working for Good Jobs in America Fund	165,000
Workplace Fairness	10,000
World Aid Inc.	10,000
World Carfree Network Europe o.s.	2,000
World Education	64,854
World Education / Cambodian Living Arts	20,000
World Learning	6,000
World Neighbors	51,285
World Savvy	7,000
World Security Institute	5,500
World Stewardship Institute	47,259
World Trust Educational Services, Inc.	10,000
WV Free	10,000
Wyoming Outdoor Council	1,000
Yale University	20,000
Yayasan Indonesian Development of Education and Permaculture Foundation	5,000
Yerba Buena Center for the Arts	10,000
Yesod Foundation	11,100
YMCA of Nashville and Middle Tennessee / The Bridge Program of the YMCA	3,000
Young Audiences of Massachusetts	24,143
Young Men's and Young Women's Hebrew Association	5,000

**Statement 3**

**Form 990, Part II, Line 22a**

**Grants and Allocations from Donor Advised Funds**

**TIDES FOUNDATION  
FEDERAL STATEMENTS**

Young People's Project	25,000
Young Scholars Program	20,000
Young Women United	10,000
Youth About Business	1,000
Youth Action International, Inc.	1,000
Youth Emergency Assistance Hostels	10,000
Youth for Environmental Sanity	9,900
Youth for Environmental Sanity / Native Movement	4,000
Youth Ministries for Peace and Justice	10,000
Youth Shelters and Family Services	500
Youth Speaks	25,000
Yukon Conservation Society	5,000
YWCA of Nashville and Middle Tennessee	500
Zaccho Dance Theater	45,000
Zentrum fur Umwelt und Kultur	2,500
Zing Foundation	7,000
ZUMIX, Inc.	6,500
Grand Total	<u>46,127,608</u>
Prior Year Cancelled Grants	(6,000)
Adjusted Donor Advised Grants Awarded	<u><u>46,121,608</u></u>

2006

Federal Statements

Tides Foundation

51-0198509

Statement 4  
Form 990, Part II, Line 22b  
Other Grants and Allocations

Cash Grants and Allocations

Class of Activity: Charitable  
Donee's Name: Statement Attached  
Donee's Address: c/o PO Box 29903  
San Francisco, CA 94129

Amount Given: \$ 21,198,016.

Total Grants and Allocations \$ 21,198,016.

**TIDES FOUNDATION  
FEDERAL STATEMENTS**

**Tides Foundation  
2006 List of Non-DAF Grants**

<b>69 Parallel</b>	9,000
<b>A.J. Muste Memorial Institute / United for Peace and Justice</b>	7,069
<b>Access Works</b>	20,000
<b>ACORN Institute</b>	306,250
<b>Act Together: Women's Action in Iraq</b>	5,000
<b>Africa Action</b>	52,143
<b>African Food and Peace Foundation</b>	1,416
<b>After Hours Project</b>	30,000
<b>Agape Foundation</b>	5,000
<b>Agrupacion de Salud Vida Nueva 2000</b>	4,966
<b>AIDS Alliance Nepal</b>	4,958
<b>AIDS Alliance Nigeria</b>	10,000
<b>AIDS and Rights Alliance for Southern Africa</b>	77,000
<b>AIDS Foundation of Chicago</b>	50,000
<b>AIDS Information Centre</b>	10,000
<b>AIDS Prevention Action Network, Inc.</b>	25,000
<b>AIDS Project Hartford, Inc.</b>	45,000
<b>Alaska Community Action on Toxics</b>	20,000
<b>Alianza Solidaria Para la Lucha Contra el VIH/SIDA</b>	20,000
<b>Alliance for Healthy Homes / Moving Forward Gulf Coast</b>	10,000
<b>AMAZONAS images</b>	250,000
<b>American Chemical Society / Green Chemistry Institute</b>	500,000
<b>American Civil Liberties Union Foundation</b>	55,344
<b>American Civil Liberties Union of Mississippi</b>	15,000
<b>American Constitution Society for Law and Policy</b>	21,297
<b>American Democracy Institute</b>	25,000
<b>American Friends Service Committee</b>	38,131
<b>American Institute for Social Justice / ACORN Living Wage Resource Center</b>	40,000
<b>American Institute for Social Justice / Arizona ACORN</b>	12,500
<b>American Institute for Social Justice / Florida ACORN</b>	42,500
<b>American Institute for Social Justice / Missouri ACORN</b>	40,000
<b>American Institute for Social Justice / Ohio ACORN</b>	40,000
<b>American Institute for Social Justice / Pulaski County ACORN</b>	70,000
<b>American Library Association</b>	30,986
<b>American Progress Action Fund</b>	40,756
<b>American Society for the Prevention of Cruelty to Animals</b>	1,942
<b>Americans United for Separation of Church and State</b>	41,325
<b>Amnesty International USA</b>	3,260
<b>Anderson Valley Health Center</b>	50,000
<b>Arizona Minimum Wage Coalition</b>	25,000
<b>Arkansas Institute for Social Justice</b>	60,481
<b>Armenian National AIDS Fund</b>	8,939
<b>Arms Control Association</b>	83,626

**TIDES FOUNDATION  
FEDERAL STATEMENTS**

<b>Arus Pelangi</b>	4,200
<b>Asian Communities for Reproductive Justice</b>	45,000
<b>Asian Pacific Network of People Living with HIV/AIDS</b>	169,717
<b>Asociacion Amigos del Aprendizaje</b>	28,575
<b>Asociacion Civil Manantial de Vida Pro Defensa De Los Derechos Humanos</b>	
<b>Amavida</b>	2,710
<b>Asociacion de Ayuda al Sero Positivo</b>	5,500
<b>Asociacion de Familiares de Detenidos Desaparecidos</b>	5,000
<b>Asociación de Mujeres de Petén Ixqik</b>	5,000
<b>Asociacion de Mujeres para la Integracion de la Familia en Nicaragua</b>	5,000
<b>Asociación Instituto Vida</b>	5,000
<b>Asociacion Kukulcan</b>	5,000
<b>Asociacion Luchemos Por La Vida</b>	2,675
<b>Asociacion para la Promocion Social Alternativa - Minga</b>	5,000
<b>Assistance Conseil</b>	9,933
<b>Association African Solidarite</b>	10,000
<b>Association Bethesaida</b>	10,000
<b>Association des femmes vivant avec le VIH/SIDA</b>	10,000
<b>Association Marc Gentilini pour Temperer la Douleur du Monde</b>	10,000
<b>Association of Women Committees for Social Work</b>	4,850
<b>Association Twizere</b>	10,000
<b>Association Vivre Plus Congo</b>	10,000
<b>Association Zahana</b>	15,000
<b>Atlanta 9to5 / Georgia Living Wage Coalition</b>	20,000
<b>Austin Harm Reduction Coalition</b>	15,000
<b>Australian Federation of AIDS Organisations</b>	26,812
<b>Australian Tropical Research Foundation</b>	8,876
<b>Bainbridge Graduate Institute</b>	839
<b>Beijing Loving Source Information Consultation Center</b>	4,000
<b>Beijing ZHIAIXING Information and Counseling Center / Enjoying Sunshine Together</b>	7,750
<b>Beijing ZHIAIXING Information and Counseling Center / Friend Love Home</b>	8,000
<b>Beijing ZHIAIXING Information and Counseling Center / Shanxi Family of Love</b>	6,500
<b>Beijing ZHIAIXING Information and Counseling Center / Shuang Miao Village</b>	
<b>PLWHA Group</b>	7,400
<b>Bienestar Human Services</b>	20,000
<b>Black Mesa Trust</b>	2,000
<b>Black Mesa Weavers for Life and Land</b>	1,500
<b>Boat People SOS, Inc.</b>	5,000
<b>Bomme Isago Association</b>	9,503
<b>Brandywine Counseling Inc</b>	15,000
<b>Brennan Center for Justice</b>	40,000
<b>Burundians Network of People Living with HIV/AIDS</b>	10,000
<b>CAB Health and Recovery Services, Inc.</b>	15,000
<b>California Black Women's Health Project</b>	15,000

Statement 4

Form 990, Part II, Line 22b

Other Grants and Allocations

**TIDES FOUNDATION  
FEDERAL STATEMENTS**

<b>California Indian Basketweavers Association</b>	2,500
<b>California Primary Care Association</b>	15,000
<b>California Rural Indian Health Board</b>	10,000
<b>Cambodian Land Mine Museum Relief Fund</b>	140,000
<b>Camden Area Health Education Center</b>	35,000
<b>Campaign for America's Future</b>	25,000
<b>Canadian Amateur Musicians</b>	13,600
<b>Canadian Council for Refugees</b>	5,000
<b>Caribbean Harm Reduction Coalition</b>	12,168
<b>Casa de la Mujer Juana Ramirez</b>	9,440
<b>Casa De Pessoas Vivendo e Convivendo com HIV/AIDS</b>	5,000
<b>Casa Latina</b>	20,000
<b>Catholic AIDS Action Trust</b>	6,500
<b>Catholic Alliance For the Common Good</b>	10,000
<b>Center for Alternatives for Victimized Women and Children</b>	9,960
<b>Center for American Progress / Faith and Public Life Resource Center</b>	100,000
<b>Center for Civic Participation</b>	25,000
<b>Center for Community and Corporate Ethics</b>	4,950
<b>Center for Community Change</b>	50,000
<b>Center for Constitutional Rights</b>	32,318
<b>Center for Media and Democracy</b>	10,000
<b>Center for Policy Alternatives</b>	21,947
<b>Center on Budget and Policy Priorities</b>	22,867
<b>Centre for the Development of Liangshan Yi Women and Children</b>	3,000
<b>Centre for the Right to Health / Communal Care Centre</b>	10,000
<b>Centro das Mulheres de Joaquim Nabuco</b>	5,000
<b>Centro De Servicios Agropecuarios Tecnicos de Chuquisaca (CESATCH)</b>	8,861
<b>Centro Mujeres</b>	48,221
<b>Centro Parroquial Ecumenico Rosa Blanca / Asociacion IMPACVIH</b>	6,720
<b>Centro Por La Justicia / Southwest Workers' Union</b>	20,000
<b>Charitable Fund Kama Plus</b>	10,000
<b>Cherkasy Regional Branch of All Ukranian Charitable Organization of All-Ukranian</b>	8,880
<b>Chicago Recovery Alliance</b>	50,000
<b>Chickaloon Village Traditional Council</b>	5,000
<b>Childhood for All</b>	10,000
<b>China Labour Bulletin</b>	118,820
<b>Chinese Association of STD/AIDS Prevention and Control / Caring Group</b>	7,350
<b>Chinese Association of STD/AIDS Prevention and Control / Dawn of Life</b>	6,200
<b>Chinese Association of STD/AIDS Prevention and Control / Farmer Health Group</b>	7,400
<b>Chinese Association of STD/AIDS Prevention and Control / Home of Love</b>	8,000
<b>Chinese Association of STD/AIDS Prevention and Control / Nibaqiang</b>	7,700
<b>Chinese Association of STD/AIDS Prevention and Control / Xin Yang Green</b>	
<b>Bamboo PLWHA Self Help Group</b>	6,700
<b>CHOICE Humanitarian</b>	9,135

**TIDES FOUNDATION  
FEDERAL STATEMENTS**

<b>Churches Center for Theology and Public Policy / Greater Washington Interfaith Power and Light</b>	27,000
<b>CIDA Foundation</b>	59,308
<b>Circle Foundation, Inc.</b>	25,000
<b>Circle of Life</b>	92,730
<b>Citizen Action of Wisconsin</b>	15,000
<b>Citizens for Global Solutions Education Fund</b>	25,000
<b>Citizens for Responsibility and Ethics in Washington</b>	20,000
<b>City of Portland Maine</b>	15,000
<b>Clean Water Action</b>	50,000
<b>Clinica Sierra Vista</b>	175,000
<b>Coalicion Ecuatoriana de Personas Que Viven con VIH/SIDA</b>	6,500
<b>Coalition for the Homeless</b>	7,069
<b>Coalition of Immokalee Workers</b>	30,000
<b>Coalition of People Fighting HIV/AIDS in Migori</b>	10,000
<b>Coalition of Women for Peace</b>	4,750
<b>Coalition to Abolish Slavery and Trafficking</b>	26,000
<b>Coast People Living with HIV/AIDS</b>	5,840
<b>Collective for Research and Training on Development - Action</b>	5,000
<b>Colorado Progressive Action</b>	25,000
<b>Comite Humanitario De Esfuerzo Compartido Contra El SIDA A.C.</b>	5,137
<b>Common Cause</b>	20,000
<b>Common Ground - Westside HIV Community Center</b>	20,000
<b>CommuniCare Health Centers</b>	250,000
<b>Community Clinic Association of Los Angeles County</b>	50,000
<b>Community Clinics Health Network</b>	50,000
<b>Community Futures Collective / Seventh Native American Generation</b>	5,000
<b>Community Health Action of Staten Island</b>	40,000
<b>Community Health Center Network</b>	141,688
<b>Community In-Power and Development Association</b>	10,000
<b>Community Life Project</b>	10,000
<b>Community Partners / California Latinas for Reproductive Justice</b>	60,000
<b>Community Partners / InnerCity Struggle</b>	10,000
<b>Community Partners / Khmer Girls in Action</b>	30,000
<b>Community Partners / Multi-Ethnic Immigrant Organizing Network</b>	35,000
<b>Community Partners / Nepal Sewa Center</b>	7,425
<b>Community Partners / Southern Californians for Youth</b>	30,000
<b>Consortio para el Dialogo Parlamentario y la Equidad Oaxaca A.C.</b>	5,000
<b>Continuum HIV Day Services</b>	30,000
<b>Continuum HIV Day Services / Homeless Youth Alliance</b>	25,000
<b>Cooperativa de Produccion de Servicios Educativos Instituto de Formacion Sexolo</b>	6,300
<b>Coral Reef Alliance</b>	29,525
<b>Corporacion Casa De La Mujer</b>	5,000
<b>Corporacion Contigo Mujer</b>	2,000
<b>Corporacion Promover Ciudadania / Grupo Interdisciplinario de Trabajo en VIH/SIDA</b>	7,350



**TIDES FOUNDATION  
FEDERAL STATEMENTS**

<b>Cortes Ecoforestry Society</b>	1,170
<b>Council of Community Clinics</b>	10,000
<b>Credinta</b>	8,500
<b>Dakota Rural Action</b>	750
<b>Dandora Community AIDS Support Association</b>	18,027
<b>Data Warehouse</b>	1,025,000
<b>Daughters of the Earth</b>	1,000
<b>Dawn of Hope Ethiopia</b>	10,000
<b>Death Penalty Focus</b>	45,000
<b>Deep South Center for Environmental Justice</b>	15,000
<b>Defenders of Wildlife</b>	1,942
<b>Defenders of Wildlife Action Fund</b>	50,000
<b>Democracy Now!</b>	39,809
<b>Democracy South</b>	25,000
<b>Democracy: A Journal of Ideas</b>	25,000
<b>Development and Education Programme for Daughters and Communities</b>	12,500
<b>DIA+LOGS</b>	8,900
<b>Diamond Willow Ministries / Ring Thunder Ranch</b>	1,000
<b>Different Avenues</b>	5,000
<b>Dignitas International</b>	170,242
<b>Dogwood Initiative</b>	28,019
<b>Douglas County AIDS Council</b>	20,000
<b>Downtown Community Television Center, Inc.</b>	15,000
<b>Drug Policy Alliance</b>	24,112
<b>Drum Major Institute for Public Policy</b>	25,000
<b>Earthjustice</b>	38,023
<b>Earthwild International</b>	950
<b>East Bay Alliance for a Sustainable Economy</b>	30,000
<b>Eastern Africa Environmental Network</b>	750
<b>Eastern Maine AIDS Network</b>	10,000
<b>Ecumenical Ministries of Oregon</b>	10,000
<b>Education Without Borders Foundation</b>	8,602
<b>El Paso Community Foundation</b>	10,000
<b>Ella Baker Center for Human Rights</b>	4,000
<b>EMpower</b>	353,491
<b>Empowerment and Rights Institute</b>	5,000
<b>Environmental Support Centre</b>	201,337
<b>Equal Ground</b>	1,000
<b>Equip K.I.D.S International</b>	42,500
<b>Espoir Vie Togo</b>	10,000
<b>Everyday Zen Foundation</b>	4,742
<b>Ewe Masenze</b>	35,500
<b>Faith In Place</b>	10,000
<b>Families USA Foundation</b>	22,705
<b>Family AIDS Care Trust</b>	22,000
<b>Family Health Centers of San Diego</b>	250,000
<b>Family Planning Association WuChang District</b>	1,000

**TIDES FOUNDATION  
FEDERAL STATEMENTS**

<b>Family Support and Orphan Care for People Living and Affected with HIV/AIDS</b>	9,432
<b>Family Violence Prevention Fund</b>	5,000
<b>Feminist Majority Foundation</b>	24,491
<b>Feodosiya Initiative Group of All Ukrainian Charitable Organization</b>	10,000
<b>Fondation Pour La Sante Reproductrice Et Leducation Familiale</b>	19,900
<b>ForestEthics</b>	69,474
<b>Forum Komunikasi Perempuan Lorosae</b>	5,000
<b>Foundation for Christ Consciousness</b>	20,000
<b>Foundation for Taxpayer and Consumer Rights</b>	12,500
<b>Foundation for the People of Burma</b>	32,500
<b>Foundation of Women and Children</b>	7,000
<b>Free Medical Clinic of Greater Cleveland</b>	10,000
<b>Free Press Action Fund</b>	24,870
<b>Friends In Deed</b>	5,000
<b>Friends of Clayoquot Sound</b>	7,579
<b>Friends of Orphans</b>	8,000
<b>Friends of the River Foundation</b>	500
<b>Friends Peace Teams</b>	3,887
<b>Friends Without A Border</b>	13,315
<b>Front Inter-Scolaire et Universitaire pour la sensibilization sur le MST/SIDA</b>	10,000
<b>Front Inter-Scolaire et Universitaire pour la sensibilization sur le MST/SIDA / TBTV Studio 2</b>	10,000
<b>Front Inter-Scolaire et Universitaire pour la sensibilization sur le MST/SIDA / W&amp;C Coalition of Adv.&amp;Treatments Access Movement</b>	20,000
<b>Fundacion Apoyo y Solidaridad</b>	38,704
<b>Fundacion Desafio</b>	5,000
<b>Fundacion Educacion Popular en Salud</b>	18,276
<b>Fundacion Instituto Para La Investigacio Del Medicamento En Los Sistemas De Salud</b>	7,500
<b>Fundación Leer</b>	847
<b>Fundacion Red Argentina de Mujeres Viviendo con VIH-SIDA</b>	6,750
<b>Fundacion Red Crucena de Apoyo Integral a Personas que Viven con el VIH de Santa</b>	5,000
<b>Fundacion Solar</b>	25,000
<b>Fundacion Vencer</b>	5,165
<b>FUNDASIDA / Entre Amigos</b>	7,500
<b>Future Generations</b>	690,000
<b>Fuyang AIDS Orphans Salvation Association</b>	2,000
<b>Gabriela Mindanao</b>	2,100
<b>Gamaliel Foundation</b>	10,000
<b>Gandhian Unit for Integrated Development Education</b>	5,181
<b>Genocide Intervention Network</b>	13,142
<b>George Washington University</b>	50,000
<b>Georgians for Choice</b>	50,000
<b>Giramatsiko Post Test Club</b>	9,862

Statement 4

Form 990, Part II, Line 22b

Other Grants and Allocations

**TIDES FOUNDATION  
FEDERAL STATEMENTS**

<b>Give Missourians A Raise</b>	50,000
<b>Global Aids Alliance / Stop HIV/AIDS in India Initiative</b>	25,000
<b>Global Fund for Children</b>	33,151
<b>Global Fund for Women</b>	45,200
<b>Global Greengrants Fund</b>	24,816
<b>Global Security Institute</b>	5,000
<b>GLSEN</b>	30,174
<b>Golos AntiSPID</b>	9,973
<b>Gonzaga Preparatory School</b>	184,662
<b>Goodwill AID</b>	10,000
<b>Grantmakers In Health</b>	5,000
<b>Greater New Orleans Fair Housing Action Center</b>	10,000
<b>Greater Richmond Interfaith Program / Community Health Empowerment</b>	40,000
<b>Green Media Toolshed</b>	99,480
<b>Groundwork Books and Community Resource Center / Youth Action Network</b>	30,000
<b>Grupo de Apoio a Vida</b>	4,900
<b>Guangxi Nanning Hong Chou Dai Health Information Counseling Service Company</b>	94,797
<b>Guangxi Nanning Hong Chou Dai Health Information Counseling Srvc Co / AIDS Care Guangxi</b>	8,000
<b>Guangxi Nanning Hong Chou Dai Health Information Counseling Srvc Co / Civilian AIDS Prevention Ctr</b>	7,000
<b>Guangxi Nanning Hong Chou Dai Health Information Counseling Srvc Co / Colourful Sky</b>	8,000
<b>Guangxi Nanning Hong Chou Dai Health Information Counseling Srvc Co / Hu Sha Township PLWHA Gr</b>	7,000
<b>Guangxi Nanning Hong Chou Dai Health Information Counseling Srvc Co / Ruili Bamboo Group</b>	6,900
<b>Guangxi Nanning Hong Chou Dai Health Information Counseling Srvc Co / Sunflower Garden</b>	8,000
<b>Guangxi Nanning Hong Chou Dai Health Information Counseling Srvc Co / Yunnan Police College</b>	16,000
<b>Guli Surkh</b>	19,834
<b>Guyanese Living with and Affected by HIV AIDS</b>	19,900
<b>Habitat for Humanity International</b>	1,180
<b>Hakiafya Tanzania Trust</b>	9,863
<b>Harm Reduction Center</b>	30,000
<b>Harmony Home Association Taiwan / Harmony Home Association Henan</b>	8,000
<b>Haskell Indian Nation University</b>	5,000
<b>Health Improvement Partnership of Santa Cruz County</b>	50,000
<b>Health Rights Action Group</b>	5,456
<b>Hera Women's Club</b>	4,300
<b>Hill Country Community Clinic</b>	250,000
<b>HIV Education and Prevention Project of Alameda County</b>	45,000
<b>Holden Village</b>	1,810
<b>Home Based Care HIV/AIDS Programme</b>	14,669
<b>Homeless Health Care Los Angeles</b>	15,000

**TIDES FOUNDATION  
FEDERAL STATEMENTS**

Hope is Rising Association	10,000
Horse Owners Society, Inc. / Owe Aku	2,000
Human Rights Action Center / US Campaign for Burma	20,000
Human Rights Campaign Foundation	31,149
Human Rights Watch	224,415
Humane Farming Association	1,942
Humanitarian Action	81,690
Idaho Women's Network Research and Education Fund	43,000
Igorot Tribal Assistance Group - IWMAAI	4,500
IHIRWE	8,000
Illinois Caucus for Adolescent Health	25,000
In Defense of Animals	1,942
Independent Filmmakers Coalition of Kansas City / Ironwood Films	1,500
Independent Press Association	24,112
Independent World Television	5,182
Indian Network for People Living with HIV/AIDS	42,105
Indians for Collective Action	222
Indigenous Environmental Network	11,541
Indo-Pacific Conservation Alliance / Yayasan Tanimbar Mandiri Indonesia	1,355
Information Clearinghouse for Chinese Gays and Lesbians	1,000
Iniciativa Comunitaria de Investigacion	25,000
InPeace Mindinao, Inc.	5,000
Institut Perempuan	5,000
Institute for Agriculture and Trade Policy	25,000
Institute for Jewish Spirituality	360
Institute for Philanthropy	320,000
Institute for the Study of Natural and Cultural Resources	9,800
Instituto Latinoamericano de Servicios Legales Alternativos	20,000
Instituto Terra	85,000
Integrated Community Based Initiatives / Integrated Community Based Post Test Club	8,209
Integrated Community Based Post Test Club	8,000
Interfaithfamily.com	20,000
Intermountain Harm Reduction Project	20,000
International Gay and Lesbian Human Rights Commission	2,000
International Medical Corps	26,656
International Primate Protection League	50,000
International Relations Center	10,000
International Rivers Network	26,006
Internews Network	27,500
Interreligious Eco-Justice Network	15,000
Iowans Against the Death Penalty	20,000
Ipas	22,705
Iraqi Society for Change	4,000
Isha L'isha-Haifa Feminist Center	5,000
Jamaica AIDS Support for Life	19,900
Kampania Przeciw Homofobii	4,000

**TIDES FOUNDATION  
FEDERAL STATEMENTS**

<b>Kamuli Young Positives</b>	9,961
<b>Katahdin Institute</b>	10,000
<b>Katakwi Egangakinos PLWA</b>	5,061
<b>Kayan Feminist Organization</b>	3,500
<b>Kazkh Union of People Living with HIV/AIDS</b>	10,000
<b>Kenya Network of HIV Positive Teachers</b>	9,257
<b>Kibaale District Network of People Living with HIV/AIDS</b>	8,231
<b>KickStart International</b>	1,067
<b>Korean Immigrant Workers Advocates</b>	50,000
<b>La Fundacion De La Candelaria</b>	32,006
<b>Lady Mermaid's Bureau</b>	6,745
<b>Lakota Fund / Lakota Action Network</b>	1,000
<b>LAM Foundation</b>	40,000
<b>Latin America Working Group Education Fund</b>	20,000
<b>Lawyers' Committee for Civil Rights Under Law</b>	35,000
<b>Lawyers' Committee on Nuclear Policy</b>	15,000
<b>Leadership Conference on Civil Rights</b>	25,000
<b>League of Conservation Voters</b>	30,000
<b>League of Independent Voters</b>	70,000
<b>League of United Latin American Citizens</b>	5,000
<b>League of Young Voters Education Fund</b>	25,000
<b>Lifeguard Harm Reduction Services</b>	15,000
<b>Longchuan County Center for Disease Control</b>	2,000
<b>Los Alamos Study Group</b>	8,000
<b>Los Angeles Free Clinic</b>	250,000
<b>Los Angeles Indigenous Peoples' Alliance / Union de Mujeres Oaxaquenas</b>	15,000
<b>Louisiana Bucket Brigade</b>	16,482
<b>Love In Action</b>	8,900
<b>Loving Hand</b>	9,300
<b>Lusapila Women Support Group</b>	8,593
<b>Lutheran Coalition for Public Policy in Minnesota</b>	25,000
<b>Lwak Girls High School</b>	16,284
<b>MADRE / Feminist International Radio Endeavor (FIRE)</b>	5,000
<b>Mahut Center Information, Guidance and Employment for Women</b>	3,949
<b>Maine Interfaith Power and Light</b>	10,000
<b>Make the Road by Walking</b>	7,069
<b>Makerere University Institute of Public Health</b>	7,858
<b>Mama Cash - Fund for Women</b>	9,805
<b>Mama Cash - Fund for Women / Lesbian, Bisexual and Female to Male (FtM)</b>	
<b>Transgender Initiative Group</b>	3,300
<b>Maryknoll Fathers and Brothers</b>	10,146
<b>Maryland Citizens Against State Executions</b>	2,500
<b>Massachusetts Interfaith Power and Light</b>	10,000
<b>Maui Economic Opportunity, Inc.</b>	5,000
<b>Media Matters for America</b>	26,223
<b>Medica Mondiale</b>	3,740
<b>Medical Care Development Inputs</b>	10,000

**TIDES FOUNDATION  
FEDERAL STATEMENTS**

<b>Mendocino County AIDS Volunteer Network</b>	15,000
<b>Metro TeenAIDS</b>	30,000
<b>METSA Foundation, Inc.</b>	5,000
<b>Miami Workers' Center</b>	30,000
<b>Michigan AIDS Fund</b>	40,000
<b>Michigan Interfaith Power and Light</b>	15,000
<b>Migrant Assistance Program</b>	2,500
<b>Minnesotans For An Energy-Efficient Economy / Justice Seekers</b>	2,500
<b>Mississippi Workers' Center for Human Rights</b>	5,000
<b>Missouri Progressive Vote Coalition</b>	75,000
<b>Missouri Religious Coalition for Reproductive Choice</b>	20,000
<b>Mongolian Women's Fund</b>	5,000
<b>Mothers Acting Up / Mainstreet Moms Organize or Bust</b>	5,000
<b>MSM: No Political Agenda</b>	18,900
<b>MtwarA Women Living Positively With HIV/AIDS</b>	3,955
<b>Municipal Network of People Living with HIV/AIDS</b>	5,890
<b>Murmansk Regional Public Organization Learning to Live</b>	10,000
<b>NAACP Legal Defense and Educational Fund</b>	50,000
<b>Nagarik Aawaz</b>	5,000
<b>NARAL Pro-Choice America Foundation</b>	38,673
<b>National Advocates for Pregnant Women</b>	55,000
<b>National Anti-Vivisection Society</b>	1,942
<b>National Association for the Advancement of Colored People</b>	26,482
<b>National Association of Positive Women Ethiopians</b>	9,000
<b>National Catholic Rural Life Conference</b>	15,000
<b>National Center for Science Education</b>	27,360
<b>National Coalition Against Censorship</b>	22,975
<b>National Coalition for the Homeless</b>	32,123
<b>National Council of People Living with HIV/AIDS / Leseli Ka Bophelo</b>	10,000
<b>National Council of People Living with HIV/AIDS / Phelisanang Bophelong</b>	8,888
<b>National Council of People Living with HIV/AIDS / Retla Hlola</b>	10,000
<b>National Council of People Living with HIV/AIDS / Thetsane Youth Against AIDS</b>	10,000
<b>National Employment Law Project</b>	21,730
<b>National Employment Law Project / New Orleans Worker Justice Coalition</b>	5,000
<b>National Federation of Peasant Women</b>	4,920
<b>National Iranian American Council</b>	25,000
<b>National Latina Institute for Reproductive Health</b>	30,000
<b>National Lawyers Guild</b>	2,500
<b>National Network for Immigrant and Refugee Rights</b>	50,000
<b>National Network of Tanzanian Women with HIV/AIDS</b>	10,000
<b>Native American Community Board</b>	32,500
<b>Native Community Action Council</b>	3,000
<b>Near North Health Service Corporation / Alliance of Chicago Community Health Services</b>	60,000
<b>Network of Children, Youth &amp; Women Infected/Affected by AIDS</b>	10,000

**TIDES FOUNDATION  
FEDERAL STATEMENTS**

<b>Network of Children, Youth &amp; Women Infected/Affected by AIDS / Support Women Families Affected by AIDS</b>	10,000
<b>Network of Men Living with HIV/AIDS</b>	10,000
<b>New America Alliance Institute</b>	5,000
<b>New America Foundation</b>	20,000
<b>New Mexico Religious Coalition for Reproductive Choice</b>	10,000
<b>New Sudan Treatment Access Movement</b>	10,000
<b>New Sudanese Indigenous NGOs Network / Sudanese Women HIV/AIDS Awareness Providers</b>	10,000
<b>New York Interfaith Power and Light</b>	5,000
<b>Niswa Association, Inc.</b>	25,000
<b>Nomadic Integrated Development and Research Agency</b>	7,497
<b>North Carolina Council of Churches</b>	10,000
<b>Northern Sierra Rural Health Network</b>	12,000
<b>Northwest Federation of Community Organizations / New Alliance Organizing Project</b>	26,000
<b>NRDC Action Fund</b>	55,664
<b>Nuclear Age Peace Foundation</b>	10,000
<b>Ohio State University Foundation / Kirwan Institute for the Study of Race and Ethnicity</b>	50,000
<b>Oil and Gas Accountability Project</b>	28,550
<b>Ong De Espoir De La Famille</b>	9,928
<b>Operation Smile</b>	2,500
<b>Organic Consumers Association</b>	35,750
<b>Organización en California de Lideres Campesinas</b>	40,000
<b>Organizacion Feminina Popular</b>	6,000
<b>Organizacion Fraternal Negra Hondurena, OFRANEH</b>	5,000
<b>Otvoreni Centar Bona Fide</b>	5,000
<b>Oxfam America</b>	40,784
<b>Pagkakaisa Ng Kababaihan Para Sa Inang Bayan</b>	10,000
<b>Partnership for Immigrant Leadership and Action / Mobilize the Immigrant Vote CA Collaborative</b>	50,000
<b>Pathfinder International</b>	9,051
<b>Pennsylvania Abolitionists United Against the Death Penalty</b>	45,000
<b>People for the American Way Foundation</b>	25,000
<b>People for the Ethical Treatment of Animals</b>	1,942
<b>Persatuan Perempuan Sama</b>	8,150
<b>Phoenix Plus</b>	10,000
<b>PICO National Network</b>	50,000
<b>Planned Parenthood Action Fund</b>	55,831
<b>Planned Parenthood Affiliates of California</b>	8,985
<b>Planned Parenthood Los Angeles</b>	50,000
<b>Ploughshares Fund</b>	25,736
<b>Point Defiance AIDS Project</b>	50,000
<b>Point Defiance AIDS Project / Needle Exchange Emergency Distribution</b>	15,000
<b>Point Defiance AIDS Project / Sonoma County Hepatitis / AIDS Risk Reduction Program</b>	25,000

**TIDES FOUNDATION  
FEDERAL STATEMENTS**

<b>Polish Federation of Women and Family Planning</b>	1,260
<b>Political Economy Research Institute</b>	15,000
<b>Pono Kaulike, Inc.</b>	3,000
<b>Positive Action for Treatment Access</b>	9,985
<b>Positive Initiative</b>	9,978
<b>Positive View</b>	9,970
<b>Positive Women Group</b>	9,200
<b>PR CoNCRA</b>	77,300
<b>Presidio Hill School</b>	1,000
<b>Prevention Point Philadelphia</b>	25,000
<b>PreventionWorks</b>	50,000
<b>Program for Torture Victims</b>	25,060
<b>Progressive Maryland Education Fund</b>	30,000
<b>Progressive States Network</b>	25,000
<b>ProgressNow</b>	200,000
<b>Project On Government Oversight</b>	24,058
<b>Project Vote</b>	161,991
<b>ProPetén Foundation</b>	25,000
<b>Proyecto Justicia y Vida / Asociacion Nacional Saberes Mujeres y Diversidades</b>	
<b>Las Musas</b>	1,600
<b>Public Campaign</b>	41,893
<b>Public Citizen Foundation</b>	20,000
<b>Public Education Network</b>	26,494
<b>Public Health Foundation Enterprises / Clean Needles Now/Harm Reduction</b>	
<b>Central</b>	45,000
<b>Public Interest Pictures</b>	25,000
<b>Public Justice Foundation of Texas</b>	20,000
<b>Public Organization Against AIDS</b>	9,400
<b>Public Organization Vera</b>	9,456
<b>Queens College Foundation</b>	9,500
<b>Rainforest Action Network</b>	39,118
<b>Reach Out Mbuya HIV/AIDS Initiative</b>	82,000
<b>Rebuilding Together San Francisco</b>	238
<b>Redefining Progress</b>	7,000
<b>Redwood Community Health Coalition</b>	401,523
<b>Religious Coalition for Reproductive Choice Education Fund</b>	30,000
<b>Reseau Camerounais des Associations de Personnes Vivant avec le VIH/SIDA</b>	59,950
<b>Reseau National Tchadien des Association des PVVIH</b>	10,000
<b>Resources for Organizing and Social Change / Nulankeyutomonen</b>	
<b>Nkihtahkomikumon</b>	2,000
<b>Rex Foundation</b>	1,000
<b>Rockefeller Family Fund / Environmental Grantmakers Association</b>	5,000
<b>Rockwood Leadership Program</b>	1,000
<b>Rocky Mountain Institute</b>	26,981
<b>Room to Read</b>	76,592
<b>Rukungiri District Network for People Living with HIV/AIDS</b>	5,593

Statement 4

Form 990, Part II, Line 22b

Other Grants and Allocations



**TIDES FOUNDATION  
FEDERAL STATEMENTS**

Rural Advancement Foundation International-USA	5,000
Safer Alternatives Through Networking and Education	20,000
SAJE	20,000
Samanvaya Ashram	10,200
San Francisco AIDS Foundation	50,000
Sangha Metta Project	8,492
Santa Cruz AIDS Project	40,000
Sarilaya Inc.	4,890
Schumacher College Foundation	3,755
Seventh Generation Fund	15,254
Seventh Generation Fund / Indigenous Youth Coalition of Pinon	5,000
Seventh Generation Fund / Sustainable Nations Development Project	5,000
Seventh Generation Fund / Traditional Native American Farmers Association	2,500
Seventh Generation Fund / Western Shoshone Defense Project	4,000
Shasta Community Health Center	250,000
Shenyang Ai Shi Yan Zhu Center for Health and Education	4,500
Sicangu Way of Life	23,000
Sierra Club of British Columbia Foundation / Cassiar Watch	30,000
Sightline Institute	30,000
Simon's Club for AIDS Awareness	3,900
Sindicato de Trabajadores de Industrias Textiles	5,000
Sinza Youth Peer Educators	8,000
Sisters' Association in Mindanao / Karapatan Task Force on Women and Children	4,300
Social and Environmental Entrepreneurs / Truman Security Forum	50,000
Society Free Culture	12,000
Society of Women of Azerbaijan for Peace and Democracy for Transcaucasus	5,000
Sojourners	12,106
Solidarity for AIDS Organization	5,890
South Brooklyn Legal Services, Inc.	21,715
South Sudan Change Agent Association / New Sudan Treatment Access Movement	10,000
Southern Alliance for Clean Energy / Georgia Interfaith Power and Light	11,000
Southern Mutual Help Association, Inc.	10,000
Special Services for Groups / Satrang	26,000
Springs of Hope Support Group	8,100
SR Trust	1,262
St. Anthony Foundation	250,000
St. James Infirmary	10,000
St. John's Well Child and Family Center	50,000
Stichting Mamio Namen Project	38,300
Strategic Concepts in Organizing and Policy Education	50,000
SunAids Association	10,000
Sunrise Library	10,500
Support Group for Antiretroviral Users	5,000

**TIDES FOUNDATION  
FEDERAL STATEMENTS**

Swaziland Breast Cancer Network	19,607
Swinomish Indian Tribal Community	3,150
Tanzania Development and AIDS Prevention	5,802
Tanzania Network of Women Living with HIV/AIDS	8,530
TeAda Productions	26,000
Teleosis Institute	3,000
Terrawatu	4,832
Texas Impact Education Fund	5,000
Thai Community Development Center / Thai Health Network	26,000
The Children's Clinic	250,000
The Crowden School	20,000
The Kids League Uganda	5,000
The Maple Street School	7,069
The Nature Conservancy of Hawaii	1,500
The Public Theater	1,000
The Rebuilding Alliance	1,000
The Ruckus Society	4,000
The Ruckus Society / Indigenous Training Resource Council	3,000
The Small-Scale Sustainable Infrastructure Development Fund, Inc.	30,000
The Wild Animal Orphanage	1,942
Third Wave Foundation	21,000
Threshold Foundation	1,200
Tibetan Nuns Project	11,523
Tides Center	1,712,500
Tides Center / Connect US	150,000
Tides Center / National Asian Pacific American Women's Forum	15,000
Tides Center / Social Venture Network	500
Tides Center / The Opportunity Agenda	20,000
Tides Center / Women's Leadership Circles	12,802
Tides, Inc.	92,412
Tides, Inc. / The NonprofitCenters Network	6,000
Tilla Association of Women Living with HIV	10,000
Together Against AIDS Positive Association	8,324
Total Health Awareness Team	15,000
Trust for Indigenous Culture and Health	183,951
Trusteeship Institute / CitizenSpeak	5,000
Try Again, Inc. / Youth Justice Coalition	10,000
Tulane University	15,000
Twenty First Century Foundation	25,000
Twikatane Support Group	5,700
Uganda Young Positives	19,877
Union de Femeninas / VIDA-Integracion-Desarrollo-Amor-VIDA	1,140
Union of Concerned Scientists	35,317
United Belize Advocacy Movement	19,600
United Development Programme Uzbekistan / Ishonch va Hayet	10,000
United States Student Association	15,000
Unitus Inc.	6,527

**TIDES FOUNDATION  
FEDERAL STATEMENTS**

Unity Shoppe	2,018
University of California San Francisco	174,941
USAction Education Fund	140,000
Vanguard Public Foundation	3,263
Verein LEFO	5,000
Vermont Ecumenical Council and Bible Society	5,000
Virginia Organizing Project / Virginians for Alternatives to the Death Penalty	20,000
Vista Community Clinic	498
Volunteers for Development in Philippine Society Foundation, Inc.	17,720
Vuka Tanzania	4,756
Washington Conservation Voters Education	30,000
Welfare Fund the Addict Rehabilitation Chistay zizn	9,973
Wellstone Action Fund	78,801
Western States Center	60,000
Western States Legal Foundation	10,000
Widow Orphan Support Initiative Agenda	10,000
WildAid	1,942
Wildlands Project	1,961
Winrock International Institute for Agricultural Development	20,000
Winter Center For Indigenous Traditions / Gedakina	2,500
Wisconsin Coalition Against the Death Penalty	50,000
Women and AIDS Support Network	7,500
Women and Children of Hope Foundation	10,000
Women and Media Collective	2,500
Women Donors Network	629
Women Fighting AIDS in Kenya	9,445
Women Fighting AIDS in Tanzania	10,000
Women for Women International	28,442
Women Initiative and Social Problems Solution	5,000
Women Together Support Organisation	10,000
Women Ummah Support Group	10,000
Women's Alliance for a Democratic Iraq	5,000
Women's Environment and Development Organization	20,000
Women's League of Burma	5,000
Women's Network for Unity	5,000
Women's Research and Advocacy Collective Against Violence Against Women	4,105
Women's Resource Center of Cebu	5,000
Women's Voices for the Earth	30,000
Women's Voices. Women Vote	50,000
Women's Voices. Women Vote Action Fund	50,000
World Resources Institute	80,000
WV Free	30,000
Young Women Fighting AIDS in Kenya	8,700
Young Women United	20,000
Youth for Environmental Sanity / Native Movement	8,000
Youth In Focus / Escuelas Si! Pintas No!	30,000

Statement 4

Form 990, Part II, Line 22b

Other Grants and Allocations

**TIDES FOUNDATION  
FEDERAL STATEMENTS**

<b>ZAPHA+</b>	7,746
<b>Zen Community of Oregon</b>	<u>21,842</u>
	21,204,169
<b>Prior Year Cancelled Grants</b>	<u>(6,153)</u>
<b>Non-DAF Grants Awarded</b>	<u><u>\$ 21,198,016</u></u>

2006

## Federal Statements

Tides Foundation

51-0198509

Statement 5  
Form 990, Part II, Line 43  
Other Expenses

	(A) Total	(B) Program Services	(C) Management & General	(D) Fundraising
Admin, IT, HR costs	700,432.	614,821.	83,021.	2,590.
Bank charges	197,258.		197,258.	
Board of Directors expenses	14,831.		14,831.	
Consultants	1,794,673.	1,594,814.	198,659.	1,200.
Insurance	18,544.		18,544.	
Investment fees	260,255.		260,255.	
License & fees	6,668.		6,668.	
Membership and dues	67,228.		67,228.	
Office expense	131,141.	115,112.	16,029.	
Other expenses	80,901.	71,013.	9,888.	
Taxes	1,750.		1,750.	
Total	<u>\$ 3,273,681.</u>	<u>\$ 2,395,760.</u>	<u>\$ 874,131.</u>	<u>\$ 3,790.</u>

Statement 6  
Form 990, Part IV, Line 54a  
Investments - Publicly Traded Securities

Publicly Traded Securities \$ 139947115.

Statement 7  
Form 990, Part IV, Line 54b  
Investments - Other Securities

Other Securities	Valuation Method	Amount
Telesaurus WPC LLC	Market Value	\$ 39,585.
Acueity, Inc.	Market Value	20.
Total		<u>\$ 39,605.</u>

2006

## Federal Statements

Tides Foundation

51-0198509

**Statement 8**  
**Form 990, Part IV, Line 57**  
**Land, Buildings, and Equipment**

Category	Basis	Accum. Deprec.	Book Value
Furniture and Fixtures	\$ 598,536.	\$ 522,543.	\$ 75,993.
Buildings	94,385.	22,254.	72,131.
Improvements	119,098.	58,545.	60,553.
Land	1,153,171.		1,153,171.
Total	<u>\$ 1,965,190.</u>	<u>\$ 603,342.</u>	<u>\$ 1,361,848.</u>

**Statement 9**  
**Form 990, Part IV, Line 58**  
**Other Assets**

Deposits	\$ 40,390.
NPV Guarantee Fee Receivable	537,351.
Total	<u>\$ 577,741.</u>

**Statement 10**  
**Form 990, Part IV, Line 65**  
**Other Liabilities**

Guarantee of Indebtedness of Others	\$ 537,351.
Total	<u>\$ 537,351.</u>

**Statement 11**  
**Form 990, Part IV-A, Line b(4)**  
**Other Amounts**

Revenue of Controlled Subsidiary	\$ 97,807.
Revenue of Supporting Organization	584,707.
Total	<u>\$ 682,514.</u>

**Statement 12**  
**Form 990, Part IV-A, Line d(2)**  
**Other Amounts**

Inter-organizational Contributions	\$ 118,000.
Total	<u>\$ 118,000.</u>

2006

## Federal Statements

Tides Foundation

51-0198509

Statement 13  
Form 990, Part IV-B, Line b(4)  
Other Amounts

Expenses of Controlled Subsidiary	\$ 5,874.
Expenses of Supporting Organization	711,364.
Total	<u>\$ 717,238.</u>

Statement 14  
Form 990, Part IV-B, Line d(2)  
Other Amounts

Inter-organizational Grants	\$ 118,000.
Total	<u>\$ 118,000.</u>

Statement 15  
Form 990, Part V-A  
List of Officers, Directors, Trustees, and Key Employees

Name and Address	Title and Average Hours Per Week Devoted	Compen- sation	Contri- bution to EBP & DC	Expense Account/ Other
* Idelisse Malave P.O. Box 29903 San Francisco, CA 94129-0903	COO 40	\$ 162,500.	\$ 19,092.	\$ 0.
Ellen Friedman P.O. Box 29903 San Francisco, CA 94129-0903	Vice President 4	0.	0.	0.
* Lauren Webster P.O. Box 29903 San Francisco, CA 94129-0903	CFO/Ass't Tres 40	120,624.	26,244.	0.
Drummond Pike P.O. Box 29903 San Francisco, CA 94129-0903	Director/CEO 18	0.	0.	0.
Melissa Bradley P.O. Box 29903 San Francisco, CA 94129-0903	Secretary/Dir 2	0.	0.	0.
Robin Wolaner P.O. Box 29903 San Francisco, CA 94129-0903	Treasurer/Dir 2	0.	0.	0.
Joseph Perez P.O. Box 29903 San Francisco, CA 94129-0903	Ass't Sec'tary 18	0.	0.	0.

\*Compensation as key employee,  
not as Board Member.

Statement 15 (continued)  
Form 990, Part V-A  
List of Officers, Directors, Trustees, and Key Employees

<u>Name and Address</u>	<u>Title and Average Hours Per Week Devoted</u>	<u>Compen- sation</u>	<u>Contri- bution to EBP &amp; DC</u>	<u>Expense Account/ Other</u>
Charles Savitt P.O. Box 29903 San Francisco, CA 94129-0903	Director 2	\$ 0.	\$ 0.	\$ 0.
Wade Rathke P.O. Box 29903 San Francisco, CA 94129-0903	Director 2	0.	0.	0.
Joel Solomon P.O. Box 29903 San Francisco, CA 94129-0903	Director 2	0.	0.	0.
Joanie Bronfman P.O. Box 29903 San Francisco, CA 94129-0903	Director 2	0.	0.	0.
john powell (sic) P.O. Box 29903 San Francisco, CA 94129-0903	Director 2	0.	0.	0.
Quinn Delaney P.O. Box 29903 San Francisco, CA 94129-0903	Chair/Director 2	0.	0.	0.
	Total	\$ 283,124.	\$ 45,336.	\$ 0.



**Statement 16**  
**Form 990, Part V-A, Line 75b**  
**Compensation Paid to Related Individuals**

Name and Relationship

---

Drummond Pike

See the attached Board chart.

Ellen Friedman

See the attached Board chart.

Robin Wolaner

See the attached Board chart.

Wade Rathke

See the attached Board chart.

Joel Solomon

See the attached Board chart.

Charles Savitt

See the attached Board chart.

Melissa Bradley

See the attached Board Chart.

Joanie Bronfman

See the attached Board chart.

john powell (sic)

See the attached Board chart.

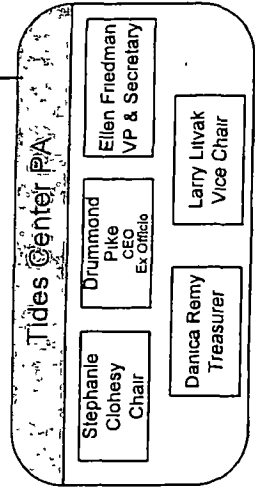
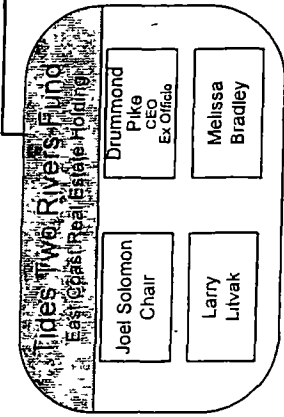
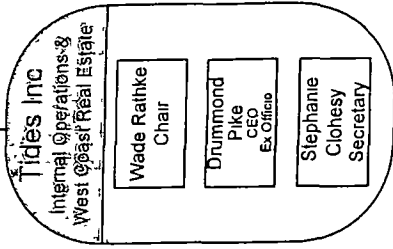
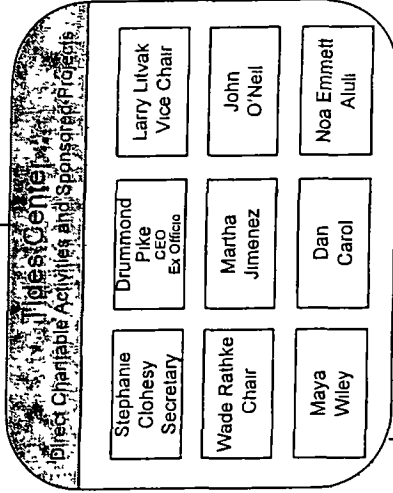
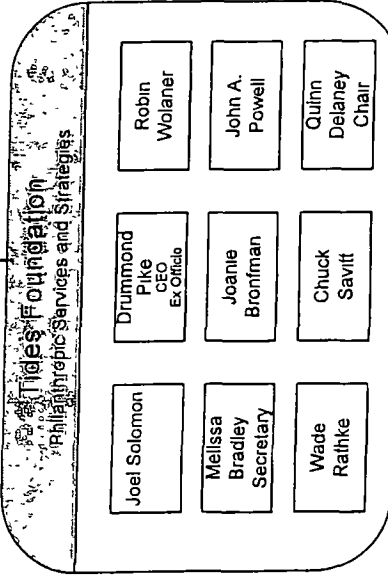
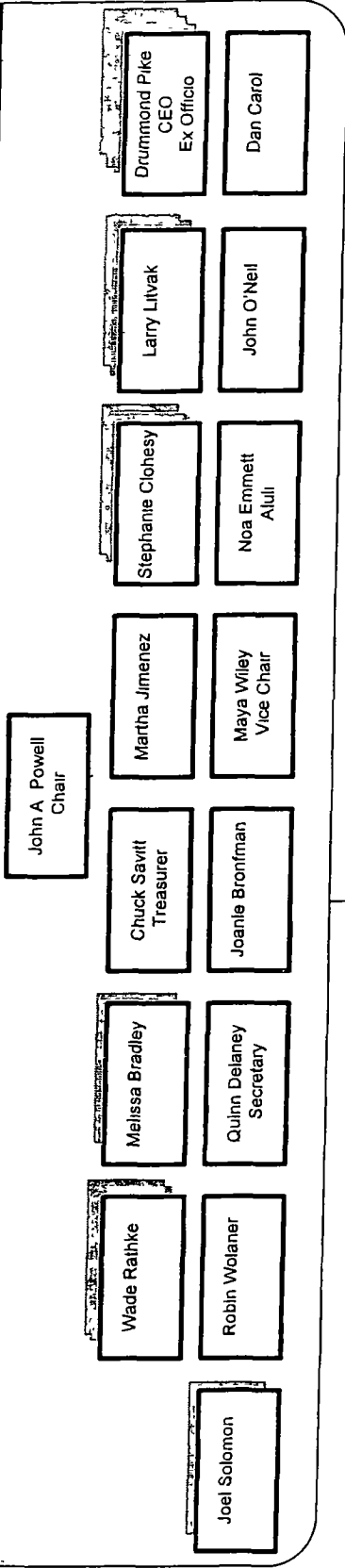
Quinn Delaney

See the attached Board chart.

Attached is a Board chart for the various organizations of the Tides Network. Also attached is a chart of Board affiliations of the various exempt organizations. No other business relationships (other than the compensation matters disclosed in Statement 17) among the Directors, Officers, Key Employees or independent contractors have been disclosed to the Foundation.

# Tides Network Governance Structure

## Tides Network Board of Directors



**BOARD MEMBER AFFILIATIONS ENDING DECEMBER 31, 2006**

ENTITY	BOARD TITLE	BOARD OFFICER TITLE	RELATED TO TIDES
--------	-------------	---------------------	------------------

**CHUCK SAVITT**

Island Press	Director	President	Yes
Tides Foundation	Director		Yes
Tides Network	Director	Treasurer	Yes

**DRUMMOND PIKE**

Endswell Foundation	Director		Yes
Farallon Fund	Director	President	Yes
Groundspring	Director	President	Yes
Heller Family Foundation	Director		Yes
Island Press	Director	Treasurer	Yes
Livingry	Director		Yes
Network for Good	Director		Yes
Sage Center	Director	President	Yes
Threshold	Director		Yes
Tides Advocacy Fund (TAF)	Director	CEO	Yes
Tides Canada Foundation	Director	Founding Chair	Yes
Tides Center	Director	CEO	Yes
Tides Center (PA)	Director	CEO	Yes
Tides Foundation	Director	CEO	Yes
Tides Network	Director	CEO	Yes
Tides Two Rivers Fund (TTRF)	Director	CEO	Yes
Tides, Inc.	Director	CEO	Yes
Underdog Foundation	Director		Yes
Weighorn and Erhmann Families Foundations	Director		Yes
Working Assets	Director		Yes

**BOARD MEMBER AFFILIATIONS ENDING DECEMBER 31, 2006**

ENTITY	BOARD TITLE	BOARD OFFICER TITLE	RELATED TO TIDES
--------	-------------	---------------------	------------------

**Ellen Friedman**

New Field Foundation	Director		Yes
Three Guineas Fund	Director		Yes
Tides Center		Executive Director	Yes
Tides Center ((PA)	Director	Vice-President/ Secretary	Yes

**IDELISSE MALAVE**

Tides Foundation		Executive Director	Yes
Schott Center for Public and Early Education	Director		Yes
Heller Family Foundation	Director		Yes
Goldman-Sonnenfeldt Foundation	Director		Yes

**JOANIE BRONFMAN**

Tides Foundation	Director		Yes
Tides Network	Director		Yes
Working Assets Funding Service			investor

**JOEL SOLOMON**

Tides Canada Foundation	Director	Vice-Chair	Yes
Tides Foundation	Director		Yes
Tides Network	Director		Yes
Tides Two Rivers Fund (TTRF)	Director	Chair	Yes
Endswell Foundation		Executive Director	Yes
Ginungagap			Yes
Underdog Foundation			Yes
Village People, LLC	Director	Chair	Receives director fees
Village Real Estate	Director		10% owner

**BOARD MEMBER AFFILIATIONS ENDING DECEMBER 31, 2006**

ENTITY	BOARD TITLE	BOARD OFFICER TITLE	RELATED TO TIDES
--------	-------------	---------------------	------------------

**john a. powell**

Tides Foundation	Director		Yes
Tides Network	Director	Chair	Yes

**JOSEPH "JOSE" PEREZ**

Tides Advocacy Fund (TAF)		Assistant Secretary	Yes
Tides Center		Assistant Secretary	Yes
Tides Center (PA)		Assistant Secretary	Yes
Tides Foundation		Assistant Secretary	Yes
Tides Network		Assistant Secretary	Yes
Tides Two Rivers Fund (TTRF)		Assistant Secretary	Yes
Tides, Inc.		Assistant Secretary	Yes

**LAUREN WEBSTER**

Tides Foundation		CFO	Yes
------------------	--	-----	-----

**MELISSA BRADLEY**

Tides Foundation	Director		Yes
Tides Network	Director		Yes
Tides Two Rivers Fund (TTRF)	Director		Yes

**QUINN DELANEY**

Tides Foundation	Director	Chair	Yes
Tides Network	Director	Secretary	Yes

**BOARD MEMBER AFFILIATIONS ENDING DECEMBER 31, 2006**

ENTITY	BOARD TITLE	BOARD OFFICER TITLE	RELATED TO TIDES
--------	-------------	---------------------	------------------

**ROBIN WOLANER**

Tides Foundation	Director	Treasurer	Yes
Tides Network	Director		Yes
Working Assets	Director		
Working Assets Funding Services	Director		

**WADE RATHKE**

Tides Advocacy Fund- (TAF)	Director	Chair	Yes
Tides Center	Director	Chair	Yes
Tides Foundation	Director		Yes
Tides Network	Director		Yes
Tides, Inc.	Director	Chair	Yes
Chief Organizer Fund of Acorn			Receives money

**Statement 17**  
**Form 990, Part V-A, Line 75c**  
**Individuals Compensation By Related Organizations**

Drummond Pike

Related Organization: Tides, Inc  
 FEIN: 57-113809  
 Relationship Explanation: There is Board overlap between Tides, Inc and Tides Foundation.  
 Compensation Paid: \$ 200,000.  
 Benefit Plan Contributions: \$ 31,507.  
 Expense Account: \$ 0.  
 Compensation Arrangement: Compensation paid by Tides, Inc.

Ellen Friedman

Related Organization: The Tides Center  
 FEIN: 94-3213100  
 Relationship Explanation: There is Board overlap between Tides Foundation and The Tides Center.  
 Compensation Paid: \$ 165,833.  
 Benefit Plan Contributions: \$ 24,930.  
 Expense Account: \$ 0.  
 Compensation Arrangement: Compensation paid entirely by The Tides Center.

Joseph Perez

Related Organization: Tides, Inc  
 FEIN: 57-113809  
 Relationship Explanation: There is Board overlap between Tides, Inc and Tides Foundation.  
 Compensation Paid: \$ 52,642.  
 Benefit Plan Contributions: \$ 3,530.  
 Expense Account: \$ 0.  
 Compensation Arrangement: Compensation paid entirely by Tides, Inc.

Robin Wolaner

Related Organization: Working Assets Funding Service  
 FEIN: 94-2897578  
 Relationship Explanation: Member of both Boards.  
 Compensation Paid: Solicited, not provided  
 Benefit Plan Contributions:  
 Expense Account:  
 Compensation Arrangement:

Wade Rathke

Related Organization: Chief Organizer Fund  
 FEIN:  
 Relationship Explanation:  
 Compensation Paid: Solicited, but not provided  
 Benefit Plan Contributions:  
 Expense Account:  
 Compensation Arrangement:

2006

Federal Statements

Tides Foundation

51-0198509

Statement 17 (continued)  
Form 990, Part V-A, Line 75c  
Individuals Compensation By Related Organizations

Joel Solomon

Related Organization: Village Realty  
FEIN:  
Relationship Explanation:  
Compensation Paid:  
Benefit Plan Contributions:  
Expense Account: Solicited, but not provided  
Compensation Arrangement:

Charles Savitt

Related Organization: Island Press  
FEIN:  
Relationship Explanation:  
Compensation Paid:  
Benefit Plan Contributions:  
Expense Account: Solicited, but not provided  
Compensation Arrangement:



**Statement 18**  
**Form 990, Part VI, Line 80b**  
**Related Organizations**

<u>Name of Organization</u>	<u>Exempt</u>	<u>Nonexempt</u>
Driscoll Family Foundation	X	
Farallons Fund	X	
Ginungagap	X	
Goldman-Sonnenfeldt Foundation	X	
Heller Family Foundation	X	
Highwater, Inc.		X
Kreitzberg Family Foundation	X	
Livingry Foundation	X	
New Field Foundation	X	
Ozymandias Foundation	X	
Rouhana Family Foundation	X	
Schott Ctr for Public & Early Education	X	
The Tides Center	X	
Three Guineas Fund	X	
Tides Advocacy Fund	X	
Tides Two Rivers Fund	X	
Tides, Inc.	X	
Underdog Foundation	X	
Weithorn & Ehrmann Families Fdn	X	

**Statement 19**  
**Form 990, Part VI, Line 90a**  
**List of States which this Return is Filed**

CA AL AK AZ AR CT DC FL GA IL KS KY ME MD MA MI MN MS NH NJ NM NY NC ND OH OK OR  
 PA RI SC TN UT VA WV WA WI

**Statement 20**  
**Form 990, Part VII, Line 103**  
**Other Revenue**

<u>Other Revenue</u>	<u>(A) Busi- ness Code</u>	<u>(B) Unrelated Business Amount</u>	<u>(C) Exclu- sion Code</u>	<u>(D) Excluded Amount</u>	<u>(E) Related or Exempt Function</u>
Membership Fees					\$ 132,498.
Miscellaneous					7,329.
Private Investment Income					33,109.
Registration Fees					69,452.
Related Entities Fees					83,531.
Total		\$ 0.		\$ 0.	\$ 325,919.

2006

## Federal Statements

Tides Foundation

51-0198509

**Statement 21**  
**Form 990, Part VIII**  
**Relationship of Activities to the Accomplishment of Exempt Purposes**

Line #	Explanation of Activities
93(a)	Management administration fees from charitable advisories and other related services.
103	\$132,498; Annual fees from members sharing information on technology ideas and solutions.
	\$7,329; Miscellaneous administration fees.
	\$33,109; Income from private investments.
	\$69,452; Income from registration fees.
	\$83,532; Income from related entities fees.

**Statement 22**  
**Schedule A, Part I**  
**Compensation of Five Highest Paid Employees**

Name and Address	Title & Average Hours Worked	Compensation	Contribut. EBP & DC	Expense Account
Gary Schwartz, 55 Exchange Pl Director of New York Office New York, NY 10005	See Column a 40	133,727.	11,550.	0.
Todd Hill, PO Box 29903 Director of Philanthropic Services San Francisco, CA 94129	See Column a 40	132,083.	9,973.	0.
Sarah Hobson, PO Box 29903 Program Director San Francisco, CA 94129	See Column a 40	114,109.	19,898.	0.
Chris Herrera, PO Box 29903 Director of Communications San Francisco, CA	See Column a 40	98,718.	15,079.	0.
Catherine Lerza, PO Box 29903 Sr. Philanthropic Services Advisor San Francisco, CA 94129	See Column a 40	99,728.	11,957.	0.
Total		\$ 578,365.	\$ 68,457.	\$ 0.

2006

## Federal Statements

Tides Foundation

51-0198509

**Statement 23**  
**Schedule A, Part II-A**  
**Compensation of Five Highest Paid Professional Service Contractors**

<u>Name and Address</u>	<u>Type of Service</u>	<u>Compensation</u>
Boston Trust & Investment Management Co One Beacon Street, Boston, MA 02108	Investment Mgmt	395,424.
Colbentz, Patch, Duffy & Bass, LLP One Ferry Building, Suite 200 San Francisco, CA 94111	Legal Services	162,527.
PriceWaterhouseCoopers LLP P.O. Box 31001-0068 Pasadena, CA 91110-0068	Foundation Audit	67,700.
Terra Strategies 222 East Marcy Street, Suite 9 Santa Fe, NM 87501	Program Mgmt	115,350.
Lisa Pool Consulting, LLC 23 Briar Road Wayne, PA 19087	Program Mgmt	70,696.
Total		<u>\$ 811,697.</u>

**Statement 24**  
**Schedule A, Part VII, Line 51d**  
**Transaction/Relationships with Noncharitable Exempt Organizations**

<u>(a)</u> <u>Line</u> <u>No.</u>	<u>(b)</u> <u>Amount</u> <u>Involved</u>	<u>(c)</u> <u>Name of Noncharitable</u> <u>Exempt Organization</u>	<u>(d)</u> <u>Description of</u> <u>Transfers, Transactions,</u> <u>and Sharing Arrangements</u>
a(i)	10,000.	Emerge Wmn Ldrs Demo Futr	Program Grants*
a(i)	10,000.	Progressive Maryland	Program Grants*
a(i)	11,000.	WA Conservation Voters	Program Grants*
a(i)	110,000.	People for the Am Way	Program Grants*
a(i)	126,500.	Sierra Club	Program Grants*
a(i)	131,000.	League of Conservtn Vtrs	Program Grants*
a(i)	140,000.	Ballot Init Stategy Ctr	Program Grants*
a(i)	1,500.	Human Rights Campaign	Program Grants*
a(i)	15,000.	Citizen Action of WI	Program Grants*
a(i)	15,000.	Conservation Voters NM	Program Grants*
a(i)	160,000.	Clean Water Action	Program Grants*
a(i)	18,550.	MS St Conference NAACP	Program Grants*
a(i)	2,000.	Magnolia Community Club	Program Grants*
a(i)	2,000.	United Farm Workers of Am	Program Grants*
a(i)	20,000.	Common Cause	Program Grants*
a(i)	20,000.	VA for Alt to Dth Penalty	Program Grants*
a(i)	22,000.	NAACP Natn'l Voter Fund	Program Grants*
a(i)	24,000.	Am Civil Liberties Union	Program Grants*
a(i)	24,870.	Free Press Action Fund	Program Grants*
a(i)	250.	AMVETS	Program Grants*
a(i)	250.	Jewish Peace Lobby	Program Grants*
a(i)	2,500.	Fair Econ Action Fund	Program Grants*
a(i)	2,500.	National Lawyers Guild	Program Grants*
a(i)	25,000.	AZ Minimum Wage Coalition	Program Grants*
a(i)	25,000.	CO Progressive Action	Program Grants*
a(i)	25,000.	Empire State Pride Agenda	Program Grants*
a(i)	25,000.	Iowa Citizen Actn Network	Program Grants*

Statement 24 (continued)  
 Schedule A, Part VII, Line 51d  
 Transaction/Relationships with Noncharitable Exempt Organizations

(a) Line No.	(b) Amount Involved	(c) Name of Noncharitable Exempt Organization	(d) Description of Transfers, Transactions, and Sharing Arrangements
a(i)	25,000.	Ldrshp Conf on Civil Rts	Program Grants*
a(i)	30,000.	Americans United	Program Grants*
a(i)	30,000.	Ohio Citizen Action	Program Grants*
a(i)	30,000.	ProgressNow Action	Program Grants*
a(i)	35,000.	Campaign for Am's Future	Program Grants*
a(i)	4,700.	Friends of Del Norte	Program Grants*
a(i)	5,000.	NARAL Pro-Choice America	Program Grants*
a(i)	50,000.	Alliance for Quality Edu	Program Grants*
a(i)	50,000.	Give MO-ans A Raise	Program Grants*
a(i)	50,000.	League of Edu Voter of Am	Program Grants*
a(i)	50,000.	US Action	Program Grants*
a(i)	50,000.	WI Colitn Agnst Dth Pnlty	Program Grants*
a(i)	50,000.	Wmn Voice Wmn Vte Actn Fd	Program Grants*
a(i)	55,664.	NRDC Action Fund	Program Grants*
a(i)	55,831.	Planned Prnthd Actn Fund	Program Grants*
a(i)	60,000.	MT Conservation Voters	Program Grants*
a(i)	65,756.	Am Progress Action Fund	Program Grants*
a(i)	70,000.	Dfndrs of Wldlife Actn Fd	Program Grants*
a(i)	75,000.	Heart of Am Northwest	Program Grants*
a(i)	80,000.	League of Indpndt Votrs	Program Grants*
a(i)	80,000.	MO Progress Vote Coalitn	Program Grants*
a(i)	8,985.	Planned Prnthd Aff of CA	Program Grants*
(ii)	15,000.	Wstrn Org of Rsource Cncl	Program Grants*
(ii)	44,000.	Am Civil Librtie Union FL	Program Grants*
<b>Total</b>	<b>2,038,856</b>		

\* Some of these transactions are lobbying grants that are also included in the amount reported on Form 990, Schedule A, Part III, Line 1.

Total grants made to exempt non-501(c)(3) organizations were \$2,038,856 Of this amount \$1,425,251 were grants made for lobbying and \$613,605 were grants made for charitable, education, environmental and social justice purposes.

**TIDES FOUNDATION  
FEDERAL STATEMENTS**

<b>Fund #</b>	<b>Account #</b>	<b>Account Description</b>	<b>Current Year Depreciation</b>
0001	5841	Depreciation-Computer Hardware	16,191.51
0001	5842	Depreciation-Int U Software	1,494.90
0001	5843	Depreciation-Equipment	9,810.07
0001	5844	Depreciation-Furniture	15,044.91
0001	5845	Depreciation-Leasehold Improvement	52,113.94
1063	5841	Depreciation-Computer Hardware	1,863.06
1063	5842	Depreciation-Int U Software	4,839.38
1063	5844	Depreciation-Furniture	58.77
1166	5841	Depreciation-Computer Hardware	887.10
1292	5840	Depreciation-Structure	2,487.36
1479	5843	Depreciation-Equipment	464.39
1479	5843	Depreciation-Equipment	135.45
1479	5844	Depreciation-Furniture	103.18
1601	5842	Depreciation-Int U Software	1,649.88
			<b>\$ 107,143.90</b>

2006

## Federal Supporting Detail

Tides Foundation

51-0198509

## Balance Sheet

Statement 26

## Other notes and loans receivable

American Consumer Insurance Agency	\$	12,000.
PPEP/Micro		20,000.
Arkansas Institute for Social Justice		17,756.
Dads and Daughters		200,000.
Tides Two Rivers		12,400,000.
Total	\$	<u>12,649,756.</u>

## Balance Sheet - Beginning of Year

Statement 27

## Other investments

Interest Receivable	\$	706,777.
Mission Related Investments		939,585.
-- Less Allowance for Doubtful Accts		-220,094.
Artwork		375,000.
Artwork		8,660.
Goldman Sachs Real Estate Fd		244,411.
Goldman Family LP		673,670.
Total	\$	<u>2,728,009.</u>

Balance Sheet - Beginning of Year  
Mortgages and other notes payable

Statement 28

Moffitt	\$	250,000.
Wells Fargo		10,800,000.
Total	\$	<u>11,050,000.</u>

Balance Sheet - End of Year  
Other notes and loans receivable

Statement 29

American Consumer Insurance Agency	\$	5,600.
PPEP/Micro		20,000.
Arkansas Institute for Social Justice		17,756.
Dads and Daughters		200,000.
MicroCredit Enterprises, LLC		300,000.
Center for Resource Economics		100,000.
Cooperativa dos Professores de Macae		23,333.
Tides Two Rivers		13,400,000.
Total	\$	<u>14,066,689.</u>

Balance Sheet - End of Year  
Other investments

Statement 30

Interest Receivable	\$	663,343.
Mission Related investments		508,870.
Artwork		725,000.
Artwork		8,660.
Goldman Sachs Real Estate Fd		253,252.
Goldman Family LP		748,737.
AltruShare Opportunity Investment		1,650,000.
Total	\$	<u>4,557,862.</u>

2006

Federal Supporting Detail

Tides Foundation

51-0198509

Balance Sheet - End of Year  
Mortgages and other notes payable

Statement 31

Moffitt	\$ 400,000.
Wells Fargo	10,300,000.
Calvert	1,500,000.
Total	<u>\$ 12,200,000.</u>

**TIDES FOUNDATION  
FEDERAL STATEMENTS**

**DIRECT LOBBYING GRANTS**

Organization's Name	Date	Amount
Alliance for Quality Education	6/13/2006	50,000.00
American Civil Liberties Union	3/1/2006	24,000 00
American Civil Liberties Union Florida	3/7/2006	44,000.00
American Progress Action Fund	5/17/2006	20,000 00
Arizona Minimum Wage Coalition	6/21/2006	25,000.00
Asian Communities for Reproductive Justice	11/1/2006	5,000.00
Ballot Initiative Strategy Center	7/12/2006	25,000.00
Ballot Initiative Strategy Center	10/17/2006	60,000.00
Ballot Initiative Strategy Center	10/17/2006	55,000.00
California Black Women's Health Project	10/25/2006	15,000.00
California Latinas for Reproductive Justice	10/25/2006	5,000.00
Campaign to Safeguard America's Waters	1/25/2006	2,171.22
Center for Constitutional Rights	11/1/2006	20,000.00
Citizen Action of Wisconsin	12/20/2006	15,000.00
Colorado Progressive Action	6/28/2006	25,000.00
Common Cause	10/25/2006	20,000.00
Conservation Voters New Mexico	6/21/2006	15,000.00
Free Press Action Fund	3/1/2006	24,870.00
Friends of Coyote Hills and Fremont	11/7/2006	5,000.00
Give Missourians A Raise	10/5/2006	50,000.00
Heart of America Northwest	1/31/2006	40,000.00
Heart of America Northwest	4/25/2006	35,000.00
League of Conservation Voters	9/27/2006	30,000.00
Mississippi State Conference NAACP	3/29/2006	18,550 00
Missouri Progressive Vote Coalition	6/14/2006	5,000.00
Missouri Progressive Vote Coalition	6/14/2006	25,000.00
Missouri Progressive Vote Coalition	10/5/2006	50,000.00
Montana Conservation Voters	6/27/2006	30,000 00
Montana Conservation Voters	8/9/2006	30,000.00
NAACP National Voter Fund	3/22/2006	22,000.00
The Ordinary People Society	12/6/2006	46,680 00
People for the American Way	10/31/2006	50,000.00
Planned Parenthood Action Fund	3/14/2006	55,831.00
Planned Parenthood Affiliates of California	10/25/2006	8,985 00
Wisconsin Coalition Against the Death Penalty	11/28/2006	50,000.00
Empire State Pride Agenda	8/15/2006	10,000.00
Iowa Citizen Action Network	6/21/2006	5,000.00
Leadership Conference on Civil Rights	5/17/2006	12,500.00
NRDC Action Fund	3/7/2006	50,664.00
Ohio Citizen Action	6/27/2006	15,000 00
		<b>\$ 1,095,251.22</b>

**GRASSROOTS LOBBYING GRANTS**

Organization's Name	Date	Amount
Americans United	7/25/2006	30,000.00
Fair Economy Action Fund	2/8/2006	2,500.00



**TIDES FOUNDATION  
FEDERAL STATEMENTS**

League of Independent Voters	8/9/2006	5,000.00
League of Independent Voters	12/6/2006	5,000.00
People for the American Way	10/17/2006	60,000.00
Progressive Maryland	7/5/2006	10,000.00
Sierra Club	7/11/2006	50,000 00
Sierra Club	8/8/2006	75,000 00
Women's Voices. Women Vote Action Fund	6/6/2006	50,000.00
Empire State Pride Agenda	8/15/2006	15,000.00
Iowa Citizen Action Network	6/21/2006	5,000.00
Leadership Conference on Civil Rights	5/17/2006	12,500.00
NRDC Action Fund	3/7/2006	5,000.00
Ohio Citizen Action	6/27/2006	5,000.00
		<u>\$ 330,000.00</u>
<b>TOTAL LOBBYING GRANTS</b>		<u><u>\$ 1,425,251.22</u></u>

## Application for Extension of Time To File an Exempt Organization Return

Department of the Treasury  
Internal Revenue Service

▶ File a separate application for each return.

- If you are filing for an **Automatic 3-Month Extension**, complete only **Part I** and check this box.
  - If you are filing for an **Additional (not automatic) 3-Month Extension**, complete only **Part II** (on page 2 of this form).
- Do not complete Part II unless** you have already been granted an automatic 3-month extension on a previously filed Form 8868.

**Part I Automatic 3-Month Extension of Time.** Only submit original (no copies needed).

Section 501(c)(3) corporations required to file Form 990-T and requesting an automatic 6-month extension – check this box and complete Part I only

*All other corporations (including 1120-C filers), partnerships, REMICS, and trusts must use Form 7004 to request an extension of time to file income tax returns.*

**Electronic Filing (e-file).** Generally, you can electronically file Form 8868 if you want a 3-month automatic extension of time to file one of the returns noted below (6 months for section 501(c)(3) corporations required to file Form 990-T). However, you cannot file Form 8868 electronically if (1) you want the additional (not automatic) 3-month extension or (2) you file Forms 990-BL, 6069, or 8870, group returns, or a composite or consolidated Form 990-T. Instead, you must submit the fully completed and signed page 2 (Part II) of Form 8868. For more details on the electronic filing of this form, visit [www.irs.gov/efile](http://www.irs.gov/efile) and click on *e-file for Charities & Nonprofits*.

<b>Type or print</b> File by the due date for filing your return. See instructions	Name of Exempt Organization <b>Tides Foundation</b>	Employer identification number <b>51-0198509</b>
	Number, street, and room or suite number If a P O box, see instructions <b>PO Box 29903</b>	
	City, town or post office For a foreign address, see instructions <b>San Francisco, CA 94129-0903</b>	
	state	ZIP code

**Check type of return to be filed** (file a separate application for each return).

<input checked="" type="checkbox"/> Form 990	<input type="checkbox"/> Form 990-T (corporation)	<input type="checkbox"/> Form 4720
<input type="checkbox"/> Form 990-BL	<input type="checkbox"/> Form 990-T (section 401(a) or 408(a) trust)	<input type="checkbox"/> Form 5227
<input type="checkbox"/> Form 990-EZ	<input type="checkbox"/> Form 990-T (trust other than above)	<input type="checkbox"/> Form 6069
<input type="checkbox"/> Form 990-PF	<input type="checkbox"/> Form 1041-A	<input type="checkbox"/> Form 8870

• The books are in the care of ▶ Drummond Pike

Telephone No. ▶ (415) 561-6400 FAX No. ▶ \_\_\_\_\_

- If the organization does not have an office or place of business in the United States, check this box
- If this is for a Group Return, enter the organization's four digit Group Exemption Number (GEN) \_\_\_\_\_. If this is for the whole group, check this box  If it is for part of the group, check this box  and attach a list with the names and EINs of all members the extension will cover.

**1** I request an automatic 3-month (6 months for a section 501(c)(3) corporation required to file Form 990-T) extension of time until 8/15, 2007, to file the exempt organization return for the organization named above.  
The extension is for the organization's return for:

- ▶  calendar year 2006 or
- ▶  tax year beginning \_\_\_\_\_, 20\_\_\_\_, and ending \_\_\_\_\_, 20\_\_\_\_\_.

**2** If this tax year is for less than 12 months, check reason.  Initial return  Final return  Change in accounting period

<b>3a</b> If this application is for Form 990-BL, 990-PF, 990-T, 4720, or 6069, enter the tentative tax, less any nonrefundable credits. See instructions	<b>3a</b>	\$ 0.
<b>b</b> If this application is for Form 990-PF or 990-T, enter any refundable credits and estimated tax payments made Include any prior year overpayment allowed as a credit	<b>3b</b>	\$ 0.
<b>c Balance Due.</b> Subtract line 3b from line 3a Include your payment with this form, or, if required, deposit with FTD coupon or, if required, by using EFTPS (Electronic Federal Tax Payment System). See instructions	<b>3c</b>	\$ 0.

**Caution.** If you are going to make an electronic fund withdrawal with this Form 8868, see Form 8453-EO and Form 8879-EO for payment instructions.

**BAA For Privacy Act and Paperwork Reduction Act Notice, see instructions.**