

1 C.D. Michel – SBN 144258
Sean A. Brady – SBN 262007
2 Matthew D. Cubeiro – SBN 291519
MICHEL & ASSOCIATES, P.C.
3 180 E. Ocean Blvd., Suite 200
Long Beach, CA 90802
4 Telephone: (562) 216-4444
Facsimile: (562) 216-4445
5 Email: cmichel@michellawyers.com

6 Attorneys for Petitioners-Plaintiffs

7
8 **IN THE SUPERIOR COURT OF THE STATE OF CALIFORNIA**
9 **FOR THE COUNTY OF LOS ANGELES**
10 **CENTRAL DISTRICT**

11 TURNER’S OPERATIONS, INC., a
12 California corporation; TRADERS LOAN
AND JEWELRY, INC., a California
13 corporation; FFLGuard, LLC, a Delaware
limited liability company; and CALIFORNIA
14 RIFLE & PISTOL ASSOCIATION,
INCORPORATED, a California corporation,

15 Petitioners-Plaintiffs,

16 v.

17 ERIC GARCETTI, in his official capacity as
18 Mayor of the City of Los Angeles;
MICHAEL N. FEUER, in his official
19 capacity as City Attorney of the City of Los
Angeles; MICHAEL MOORE, in his official
20 capacity as Chief of the Los Angeles Police
Department; CITY OF LOS ANGELES; and
21 DOES 1-25,

22 Respondents-Defendants.

Case No.: 20STCP01258

**REQUEST FOR JUDICIAL NOTICE IN
SUPPORT OF PETITIONER TURNER’S
OPERATIONS, INC.’S EX PARTE
APPLICATION FOR TEMPORARY
RESTRAINING ORDER AND ORDER TO
SHOW CAUSE**

Hearing Date: April 28, 2020
Hearing Time: 8:30 a.m.
Department: 1

Action Filed: April 3, 2020

1 **REQUEST FOR JUDICIAL NOTICE**

2 Please take notice that, under California Evidence Code Rule 452(d) and California
3 Rules of Court, rules 3.1113(l) and 3.1306(c), Petitioner Turner’s Operations, Inc.
4 respectfully requests that this Court take judicial notice of the following adjudicative facts
5 and documents in connection with its Ex Parte Application for Temporary Restraining Order
6 and Order to Show Cause in this matter:

7 <u>Exhibit</u>	<u>Document Description</u>
8 Exhibit A	Governor Gavin Newsom’s Proclamation of a State of Emergency, dated 9 March 4, 2020.
10 Exhibit B	Governor Gavin Newsom’s Executive Order N-33-20, dated March 19, 2020.
11 Exhibit C	Cybersecurity and Infrastructure Security Agency’s (“CISA”) 16 critical 12 infrastructure sectors.
13 Exhibit D	Advisory Memorandum on Identification of Essential Critical Infrastructure 14 Workers During Covid-19 Response by Christopher C. Kreps, Director of CISA, dated March 28, 2020.
15 Exhibit E	City of Los Angeles’s Declaration of Local Emergency signed by Mayor Eric 16 Garcetti, dated March 4, 2020.
17 Exhibit F	City of Los Angeles’s Public Order Under City of Los Angeles Emergency 18 Authority regarding New City Measures to Address COVID-19, dated March 15, 2020.
19 Exhibit G	City of Los Angeles’s Public Order Under City of Los Angeles Emergency 20 Authority regarding Safer at Home, dated March 19, 2020.
21 Exhibit H	Joint Statement by Mayor Garcetti and Los Angeles City Attorney Michael 22 Feuer stating that the City would ensure “strong enforcement” of the its “Safer at Home” order, dated March 24, 2020.
23 Exhibit I	Statement by Los Angeles County Sheriff Alex Villanueva declaring gun and 24 ammunition stores non-essential.
25 Exhibit J	Statement by Los Angeles County Sheriff Alex Villanueva clarifying his previous statement regarding firearm retailers.
26 Exhibit K	Culver City Order regarding City Measures to Address COVID-19 - Firearms 27 Retailers, issued April 1, 2020.
28 Exhibit L	Public Order Under City of Los Angeles Emergency Authority regarding

1
2
3
4
5
6
7
8
9
10
11
12
13
14
15
16
17
18
19
20
21
22
23
24
25
26
27
28

Safer at Home, revised April 1, 2020.

Exhibit M *LAPD Equipment*, http://www.lapdonline.org/lapd_equipment (April 27, 2020).

Exhibit N *Handguns Certified for Sale, California Department of Justice, Bureau of Firearms*, <https://oag.ca.gov/firearms/certified-handguns/search> (April 27, 2020).

Exhibit O *Information Bulletin No. 2018-BOF-03: Evidence and Crime Guns Automated Firearms System*, California Department of Justice, Division of Law Enforcement (Aug. 23, 2018).

Exhibit P *Automated Firearms System Personal Information Update*, California Department of Justice, Bureau of Firearms, <https://oag.ca.gov/firearms/afspi> (April 27, 2020).

Exhibit Q Public Order Under City of Los Angeles Emergency Authority regarding Safer at Home, revised April 10, 2020.

Dated: April 27, 2020

MICHEL & ASSOCIATES, P.C.



Sean A. Brady
Attorneys for Petitioners/Plaintiffs

EXHIBIT A

**EXECUTIVE DEPARTMENT
STATE OF CALIFORNIA**

PROCLAMATION OF A STATE OF EMERGENCY

WHEREAS in December 2019, an outbreak of respiratory illness due to a novel coronavirus (a disease now known as COVID-19), was first identified in Wuhan City, Hubei Province, China, and has spread outside of China, impacting more than 75 countries, including the United States; and

WHEREAS the State of California has been working in close collaboration with the national Centers for Disease Control and Prevention (CDC), with the United States Health and Human Services Agency, and with local health departments since December 2019 to monitor and plan for the potential spread of COVID-19 to the United States; and

WHEREAS on January 23, 2020, the CDC activated its Emergency Response System to provide ongoing support for the response to COVID-19 across the country; and

WHEREAS on January 24, 2020, the California Department of Public Health activated its Medical and Health Coordination Center and on March 2, 2020, the Office of Emergency Services activated the State Operations Center to support and guide state and local actions to preserve public health; and

WHEREAS the California Department of Public Health has been in regular communication with hospitals, clinics and other health providers and has provided guidance to health facilities and providers regarding COVID-19; and

WHEREAS as of March 4, 2020, across the globe, there are more than 94,000 confirmed cases of COVID-19, tragically resulting in more than 3,000 deaths worldwide; and

WHEREAS as of March 4, 2020, there are 129 confirmed cases of COVID-19 in the United States, including 53 in California, and more than 9,400 Californians across 49 counties are in home monitoring based on possible travel-based exposure to the virus, and officials expect the number of cases in California, the United States, and worldwide to increase; and

WHEREAS for more than a decade California has had a robust pandemic influenza plan, supported local governments in the development of local plans, and required that state and local plans be regularly updated and exercised; and

WHEREAS California has a strong federal, state and local public health and health care delivery system that has effectively responded to prior events including the H1N1 influenza virus in 2009, and most recently Ebola; and

WHEREAS experts anticipate that while a high percentage of individuals affected by COVID-19 will experience mild flu-like symptoms, some will have more serious symptoms and require hospitalization, particularly individuals who are elderly or already have underlying chronic health conditions; and

WHEREAS it is imperative to prepare for and respond to suspected or confirmed COVID-19 cases in California, to implement measures to mitigate the spread of COVID-19, and to prepare to respond to an increasing number of individuals requiring medical care and hospitalization; and

WHEREAS if COVID-19 spreads in California at a rate comparable to the rate of spread in other countries, the number of persons requiring medical care may exceed locally available resources, and controlling outbreaks minimizes the risk to the public, maintains the health and safety of the people of California, and limits the spread of infection in our communities and within the healthcare delivery system; and

WHEREAS personal protective equipment (PPE) is not necessary for use by the general population but appropriate PPE is one of the most effective ways to preserve and protect California's healthcare workforce at this critical time and to prevent the spread of COVID-19 broadly; and

WHEREAS state and local health departments must use all available preventative measures to combat the spread of COVID-19, which will require access to services, personnel, equipment, facilities, and other resources, potentially including resources beyond those currently available, to prepare for and respond to any potential cases and the spread of the virus; and

WHEREAS I find that conditions of Government Code section 8558(b), relating to the declaration of a State of Emergency, have been met; and

WHEREAS I find that the conditions caused by COVID-19 are likely to require the combined forces of a mutual aid region or regions to appropriately respond; and

WHEREAS under the provisions of Government Code section 8625(c), I find that local authority is inadequate to cope with the threat posed by COVID-19; and

WHEREAS under the provisions of Government Code section 8571, I find that strict compliance with various statutes and regulations specified in this order would prevent, hinder, or delay appropriate actions to prevent and mitigate the effects of the COVID-19.

NOW, THEREFORE, I, GAVIN NEWSOM, Governor of the State of California, in accordance with the authority vested in me by the State Constitution and statutes, including the California Emergency Services Act, and in particular, Government Code section 8625, **HEREBY PROCLAIM A STATE OF EMERGENCY** to exist in California.

IT IS HEREBY ORDERED THAT:

1. In preparing for and responding to COVID-19, all agencies of the state government use and employ state personnel, equipment, and facilities or perform any and all activities consistent with the direction of the Office of Emergency Services and the State Emergency Plan, as well as the California Department of Public Health and the Emergency Medical Services Authority. Also, all residents are to heed the advice of emergency officials with regard to this emergency in order to protect their safety.
2. As necessary to assist local governments and for the protection of public health, state agencies shall enter into contracts to arrange for the procurement of materials, goods, and services needed to assist in preparing for, containing, responding to, mitigating the effects of, and recovering from the spread of COVID-19. Applicable provisions of the Government Code and the Public Contract Code, including but not limited to travel, advertising, and competitive bidding requirements, are suspended to the extent necessary to address the effects of COVID-19.
3. Any out-of-state personnel, including, but not limited to, medical personnel, entering California to assist in preparing for, responding to, mitigating the effects of, and recovering from COVID-19 shall be permitted to provide services in the same manner as prescribed in Government Code section 179.5, with respect to licensing and certification. Permission for any such individual rendering service is subject to the approval of the Director of the Emergency Medical Services Authority for medical personnel and the Director of the Office of Emergency Services for non-medical personnel and shall be in effect for a period of time not to exceed the duration of this emergency.
4. The time limitation set forth in Penal Code section 396, subdivision (b), prohibiting price gouging in time of emergency is hereby waived as it relates to emergency supplies and medical supplies. These price gouging protections shall be in effect through September 4, 2020.
5. Any state-owned properties that the Office of Emergency Services determines are suitable for use to assist in preparing for, responding to, mitigating the effects of, or recovering from COVID-19 shall be made available to the Office of Emergency Services for this purpose, notwithstanding any state or local law that would restrict, delay, or otherwise inhibit such use.
6. Any fairgrounds that the Office of Emergency Services determines are suitable to assist in preparing for, responding to, mitigating the effects of, or recovering from COVID-19 shall be made available to the Office of Emergency Services pursuant to the Emergency Services Act, Government Code section 8589. The Office of Emergency Services shall notify the fairgrounds of the intended use and can immediately use the fairgrounds without the fairground board of directors' approval, and

notwithstanding any state or local law that would restrict, delay, or otherwise inhibit such use.

7. The 30-day time period in Health and Safety Code section 101080, within which a local governing authority must renew a local health emergency, is hereby waived for the duration of this statewide emergency. Any such local health emergency will remain in effect until each local governing authority terminates its respective local health emergency.
8. The 60-day time period in Government Code section 8630, within which local government authorities must renew a local emergency, is hereby waived for the duration of this statewide emergency. Any local emergency proclaimed will remain in effect until each local governing authority terminates its respective local emergency.
9. The Office of Emergency Services shall provide assistance to local governments that have demonstrated extraordinary or disproportionate impacts from COVID-19, if appropriate and necessary, under the authority of the California Disaster Assistance Act, Government Code section 8680 et seq., and California Code of Regulations, Title 19, section 2900 et seq.
10. To ensure hospitals and other health facilities are able to adequately treat patients legally isolated as a result of COVID-19, the Director of the California Department of Public Health may waive any of the licensing requirements of Chapter 2 of Division 2 of the Health and Safety Code and accompanying regulations with respect to any hospital or health facility identified in Health and Safety Code section 1250. Any waiver shall include alternative measures that, under the circumstances, will allow the facilities to treat legally isolated patients while protecting public health and safety. Any facilities being granted a waiver shall be established and operated in accordance with the facility's required disaster and mass casualty plan. Any waivers granted pursuant to this paragraph shall be posted on the Department's website.
11. To support consistent practices across California, state departments, in coordination with the Office of Emergency Services, shall provide updated and specific guidance relating to preventing and mitigating COVID-19 to schools, employers, employees, first responders and community care facilities by no later than March 10, 2020.
12. To promptly respond for the protection of public health, state entities are, notwithstanding any other state or local law, authorized to share relevant medical information, limited to the patient's underlying health conditions, age, current condition, date of exposure, and possible contact tracing, as necessary to address the effect of the COVID-19 outbreak with state, local, federal, and nongovernmental partners, with such information to be used for the limited purposes of monitoring, investigation and control, and treatment and coordination of care. The

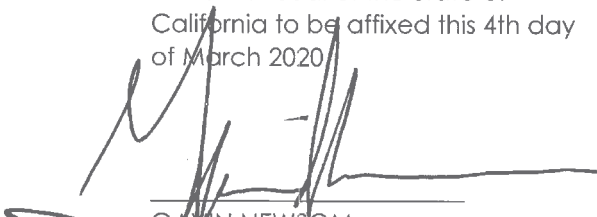
notification requirement of Civil Code section 1798.24, subdivision (i), is suspended.

13. Notwithstanding Health and Safety Code sections 1797.52 and 1797.218, during the course of this emergency, any EMT-P licensees shall have the authority to transport patients to medical facilities other than acute care hospitals when approved by the California EMS Authority. In order to carry out this order, to the extent that the provisions of Health and Safety Code sections 1797.52 and 1797.218 may prohibit EMT-P licensees from transporting patients to facilities other than acute care hospitals, those statutes are hereby suspended until the termination of this State of Emergency.

14. The Department of Social Services may, to the extent the Department deems necessary to respond to the threat of COVID-19, waive any provisions of the Health and Safety Code or Welfare and Institutions Code, and accompanying regulations, interim licensing standards, or other written policies or procedures with respect to the use, licensing, or approval of facilities or homes within the Department's jurisdiction set forth in the California Community Care Facilities Act (Health and Safety Code section 1500 et seq.), the California Child Day Care Facilities Act (Health and Safety Code section 1596.70 et seq.), and the California Residential Care Facilities for the Elderly Act (Health and Safety Code section 1569 et seq.). Any waivers granted pursuant to this paragraph shall be posted on the Department's website.

I FURTHER DIRECT that as soon as hereafter possible, this proclamation be filed in the Office of the Secretary of State and that widespread publicity and notice be given of this proclamation.

IN WITNESS WHEREOF I have hereunto set my hand and caused the Great Seal of the State of California to be affixed this 4th day of March 2020.



GAVIN NEWSOM
Governor of California

ATTEST:

ALEX PADILLA
Secretary of State

EXHIBIT B

EXECUTIVE DEPARTMENT
STATE OF CALIFORNIA

EXECUTIVE ORDER N-33-20

WHEREAS on March 4, 2020, I proclaimed a State of Emergency to exist in California as a result of the threat of COVID-19; and

WHEREAS in a short period of time, COVID-19 has rapidly spread throughout California, necessitating updated and more stringent guidance from federal, state, and local public health officials; and

WHEREAS for the preservation of public health and safety throughout the entire State of California, I find it necessary for all Californians to heed the State public health directives from the Department of Public Health.

NOW, THEREFORE, I, GAVIN NEWSOM, Governor of the State of California, in accordance with the authority vested in me by the State Constitution and statutes of the State of California, and in particular, Government Code sections 8567, 8627, and 8665 do hereby issue the following Order to become effective immediately:

IT IS HEREBY ORDERED THAT:

- 1) To preserve the public health and safety, and to ensure the healthcare delivery system is capable of serving all, and prioritizing those at the highest risk and vulnerability, all residents are directed to immediately heed the current State public health directives, which I ordered the Department of Public Health to develop for the current statewide status of COVID-19. Those directives are consistent with the March 19, 2020, Memorandum on Identification of Essential Critical Infrastructure Workers During COVID-19 Response, found at: <https://covid19.ca.gov/>. Those directives follow:

ORDER OF THE STATE PUBLIC HEALTH OFFICER
March 19, 2020

To protect public health, I as State Public Health Officer and Director of the California Department of Public Health order all individuals living in the State of California to stay home or at their place of residence except as needed to maintain continuity of operations of the federal critical infrastructure sectors, as outlined at <https://www.cisa.gov/identifying-critical-infrastructure-during-covid-19>. In addition, and in consultation with the Director of the Governor's Office of Emergency Services, I may designate additional sectors as critical in order to protect the health and well-being of all Californians.

Pursuant to the authority under the Health and Safety Code 120125, 120140, 131080, 120130(c), 120135, 120145, 120175 and 120150, this order is to go into effect immediately and shall stay in effect until further notice.

The federal government has identified 16 critical infrastructure sectors whose assets, systems, and networks, whether physical or virtual, are considered so vital to the United States that their incapacitation or

destruction would have a debilitating effect on security, economic security, public health or safety, or any combination thereof. I order that Californians working in these 16 critical infrastructure sectors may continue their work because of the importance of these sectors to Californians' health and well-being.

This Order is being issued to protect the public health of Californians. The California Department of Public Health looks to establish consistency across the state in order to ensure that we mitigate the impact of COVID-19. Our goal is simple, we want to bend the curve, and disrupt the spread of the virus.

The supply chain must continue, and Californians must have access to such necessities as food, prescriptions, and health care. When people need to leave their homes or places of residence, whether to obtain or perform the functions above, or to otherwise facilitate authorized necessary activities, they should at all times practice social distancing.

- 2) The healthcare delivery system shall prioritize services to serving those who are the sickest and shall prioritize resources, including personal protective equipment, for the providers providing direct care to them.
- 3) The Office of Emergency Services is directed to take necessary steps to ensure compliance with this Order.
- 4) This Order shall be enforceable pursuant to California law, including, but not limited to, Government Code section 8665.

IT IS FURTHER ORDERED that as soon as hereafter possible, this Order be filed in the Office of the Secretary of State and that widespread publicity and notice be given of this Order.

This Order is not intended to, and does not, create any rights or benefits, substantive or procedural, enforceable at law or in equity, against the State of California, its agencies, departments, entities, officers, employees, or any other person.

IN WITNESS WHEREOF I have hereunto set my hand and caused the Great Seal of the State of California to be affixed this 19th day of March 2020.



GAVIN NEWSOM
Governor of California

ATTEST:

ALEX PADILLA
Secretary of State

EXHIBIT C



IDENTIFYING CRITICAL INFRASTRUCTURE DURING COVID-19



NOTE: This information was originally posted on March 19 and was updated on March 28.

Expand All Sections

Guidance on the Essential Critical Infrastructure Workforce
16 Critical Infrastructure Sectors

Frequently Asked Questions

EXHIBIT D



March 28, 2020

ADVISORY MEMORANDUM ON IDENTIFICATION OF ESSENTIAL CRITICAL INFRASTRUCTURE WORKERS DURING COVID-19 RESPONSE

FROM: Christopher C. Krebs
Director
Cybersecurity and Infrastructure Security Agency (CISA)

A handwritten signature in black ink, appearing to read "Chris Krebs", written over the printed name and title.

As the Nation comes together to slow the spread of COVID-19, on March 16th the President issued updated Coronavirus Guidance for America that highlighted the importance of the critical infrastructure workforce.

The Cybersecurity and Infrastructure Security Agency (CISA) executes the Secretary of Homeland Security's authorities to secure critical infrastructure. Consistent with these authorities, CISA has developed, in collaboration with other federal agencies, State and local governments, and the private sector, an "Essential Critical Infrastructure Workforce" advisory list. This list is intended to help State, local, tribal and territorial officials as they work to protect their communities, while ensuring continuity of functions critical to public health and safety, as well as economic and national security. Decisions informed by this list should also take into consideration additional public health considerations based on the specific COVID-19-related concerns of particular jurisdictions.

This list is advisory in nature. It is not, nor should it be considered, a federal directive or standard. Additionally, this advisory list is not intended to be the exclusive list of critical infrastructure sectors, workers, and functions that should continue during the COVID-19 response across all jurisdictions. Individual jurisdictions should add or subtract essential workforce categories based on their own requirements and discretion.

The advisory list identifies workers who conduct a range of operations and services that are typically essential to continued critical infrastructure viability, including staffing operations centers, maintaining and repairing critical infrastructure, operating call centers, working construction, and performing operational functions, among others. It also includes workers who support crucial supply chains and enable functions for critical infrastructure. The industries they support represent, but are not limited to, medical and healthcare, telecommunications, information technology systems, defense, food and agriculture, transportation and logistics, energy, water and wastewater, law enforcement,

and public works.

State, local, tribal, and territorial governments are responsible for implementing and executing response activities, including decisions about access and reentry, in their communities, while the Federal Government is in a supporting role. Officials should use their own judgment in issuing implementation directives and guidance. Similarly, while adhering to relevant public health guidance, critical infrastructure owners and operators are expected to use their own judgement on issues of the prioritization of business processes and workforce allocation to best ensure continuity of the essential goods and services they support. All decisions should appropriately balance public safety, the health and safety of the workforce, and the continued delivery of essential critical infrastructure services and functions. While this advisory list is meant to help public officials and employers identify essential work functions, it allows for the reality that some workers engaged in activity determined to be essential may be unable to perform those functions because of health-related concerns.

CISA will continue to work with our partners in the critical infrastructure community to update this advisory list if necessary as the Nation's response to COVID-19 evolves.

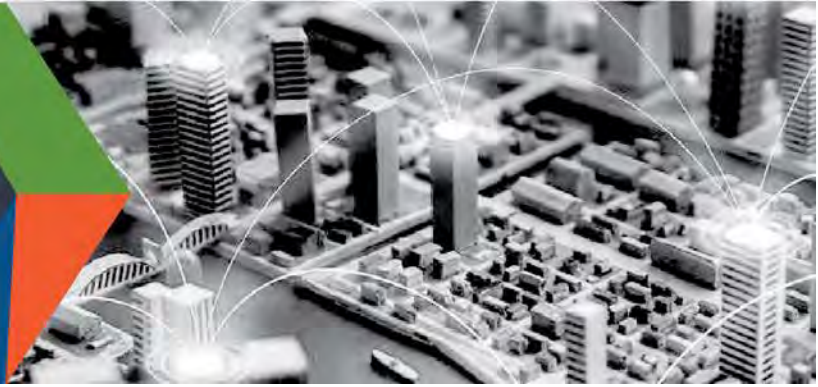
Should you have questions about this list, please contact CISA at CISA.CAT@cisa.dhs.gov.

Attachment: “Guidance on the Essential Critical Infrastructure Workforce: Ensuring Community and National Resilience in COVID-19 Response Version 2.0”



CISA
CYBER+INFRASTRUCTURE

DEFEND TODAY, SECURE TOMORROW



Guidance on the Essential Critical Infrastructure Workforce: Ensuring Community and National Resilience in COVID-19 Response

Version 2.0 (March 28, 2020)

THE IMPORTANCE OF ESSENTIAL CRITICAL INFRASTRUCTURE WORKERS

Functioning critical infrastructure is imperative during the response to the COVID-19 emergency for both public health and safety as well as community well-being. Certain critical infrastructure industries have a special responsibility in these times to continue operations.

This advisory guidance and accompanying list are intended to support state, local, tribal, territorial and industry partners in identifying the critical infrastructure sectors and the essential workers needed to maintain the services and functions Americans depend on daily and that need to be able to operate resiliently during the COVID-19 pandemic response.

This document gives advisory guidance on defining essential critical infrastructure workers. Promoting the ability of such workers to continue to work during periods of community restriction, access management, social distancing, or closure orders/directives is crucial to community resilience and continuity of essential functions.

CISA will continually solicit and accept feedback on the list and will evolve the list in response to stakeholder feedback. We will also use our various stakeholder engagement mechanisms to work with partners on how they are using this list and share those lessons learned and best practices broadly. Feedback can be sent to CISA.CAT@CISA.DHS.GOV.

CONSIDERATIONS FOR GOVERNMENT AND BUSINESS

This list was developed in consultation with federal agency partners, industry experts, and State and local officials, and is based on several key principles:

1. Response efforts to the COVID-19 pandemic are locally executed, state managed, and federally supported.
2. Everyone should follow guidance from the CDC, as well as State and local government officials, regarding strategies to limit disease spread.
3. Workers should be encouraged to work remotely when possible and focus on core business activities. In-person, non-mandatory activities should be delayed until the resumption of normal operations.
4. When continuous remote work is not possible, businesses should enlist strategies to reduce the likelihood of spreading the disease. This includes, but is not necessarily limited to, separating staff by off-setting shift hours or days and/or social distancing. These steps can preserve the workforce and allow operations to continue.
5. All organizations should implement their business continuity and pandemic plans or put plans in place if they do not exist. Delaying implementation is not advised and puts at risk the viability of the business and the

CONNECT WITH US
www.cisa.gov

For more information,
email CISA.CAT@cisa.dhs.gov



[Linkedin.com/company/cybersecurity-and-infrastructure-security-agency](https://www.linkedin.com/company/cybersecurity-and-infrastructure-security-agency)



@CISAgov | @cyber | @uscert_gov



[Facebook.com/CISA](https://www.facebook.com/CISA)

health and safety of the employees.

6. Reliance on technology and just-in-time supply chains means that certain workers must be able to access certain sites, facilities, and assets to ensure continuity of functions.
7. Government employees, such as emergency managers, and the business community need to establish and maintain lines of communication.
8. When government and businesses engage in discussions about essential critical infrastructure workers, they need to consider the implications of business operations beyond the jurisdiction where the asset or facility is located. Businesses can have sizeable economic and societal impacts as well as supply chain dependencies that are geographically distributed.
9. Whenever possible, jurisdictions should align access and movement control policies related to critical infrastructure workers to lower the burden of workers crossing jurisdictional boundaries.

IDENTIFYING ESSENTIAL CRITICAL INFRASTRUCTURE WORKERS

The following list of identified essential critical infrastructure workers is intended to be overly inclusive reflecting the diversity of industries across the United States.



CONNECT WITH US
www.cisa.gov

For more information,
 email CISA.CAT@cisa.dhs.gov

 [Linkedin.com/company/cybersecurity-and-infrastructure-security-agency](https://www.linkedin.com/company/cybersecurity-and-infrastructure-security-agency)

 @CISAgov | @cyber | @uscert_gov

 [Facebook.com/CISA](https://www.facebook.com/CISA)

HEALTHCARE / PUBLIC HEALTH

- Workers who perform critical clinical research, development, and testing needed for COVID-19 response.
- Healthcare providers and Caregivers including physicians, dentists, psychologists, mid-level practitioners, nurses and assistants, infection control and quality assurance personnel, pharmacists, physical and occupational therapists and assistants, social workers, optometrists, speech pathologists, chiropractors, and diagnostic and therapeutic technicians and technologists.
- Hospital and laboratory personnel (including accounting, administrative, admitting and discharge, engineering, epidemiological, source plasma and blood donation, food service, housekeeping, medical records, information technology and operational technology, nutritionists, sanitarians, respiratory therapists, etc.).
- Workers in other medical and biomedical facilities (including Ambulatory Health and Surgical, Blood Banks, Clinics, Community Mental Health, Comprehensive Outpatient rehabilitation, End Stage Renal Disease, Health Departments, Home Health care, Hospices, Hospitals, Long Term Care, Nursing Care Facilities, Organ Pharmacies, Procurement Organizations, Psychiatric Residential, Rural Health Clinics and Federally Qualified Health Centers, and retail facilities specializing in medical good and supplies).
- Manufacturer workers for health manufacturing (including biotechnology companies), materials and parts suppliers, logistics and warehouse operators, distributors of medical equipment (including those who test and repair), personal protective equipment (PPE), isolation barriers, medical gases, pharmaceuticals (including materials used in radioactive drugs), dietary supplements, blood and blood products, vaccines, testing materials, laboratory supplies, cleaning, sanitizing, disinfecting or sterilization supplies, and tissue and paper towel products.
- Public health / community health workers, including those who compile, model, analyze and communicate public health information.
- Blood and plasma donors and the employees of the organizations that operate and manage related activities.
- Workers who manage health plans, billing, and health information, who cannot practically work remotely.
- Workers who conduct community-based public health functions, conducting epidemiologic surveillance, compiling, analyzing and communicating public health information, who cannot practically work remotely.
- Workers performing information technology and cybersecurity functions at healthcare and public health facilities, who cannot practically work remotely.
- Workers performing security, incident management, and emergency operations functions at or on behalf of healthcare entities including healthcare coalitions, who cannot practically work remotely.
- Pharmacy employees necessary to maintain uninterrupted prescription filling.
- Workers performing mortuary funeral, cremation, burial, cemetery, and related services, including funeral homes, crematoriums, cemetery workers, and coffin makers.
- Workers who coordinate with other organizations to ensure the proper recovery, handling, identification, transportation, tracking, storage, and disposal of human remains and personal effects; certify cause of death; and facilitate access to mental/behavioral health services to the family members, responders, and survivors of an incident.

CONNECT WITH US
www.clsa.gov

For more information,
 email CISA.CAT@clsa.dhs.gov



[Linkedin.com/company/cybersecurity-and-infrastructure-security-agency](https://www.linkedin.com/company/cybersecurity-and-infrastructure-security-agency)



[@CISAgov](https://twitter.com/CISAgov) | [@cyber](https://twitter.com/cyber) | [@uscert_gov](https://twitter.com/uscert_gov)



[Facebook.com/CISA](https://www.facebook.com/CISA)

LAW ENFORCEMENT, PUBLIC SAFETY, AND OTHER FIRST RESPONDERS

- Public, private, and voluntary personnel (front line and management) in emergency management, law enforcement, fire and rescue services, emergency medical services, and private security, to include public and private hazardous material responders, air medical service providers (pilots and supporting technicians), corrections, and search and rescue personnel.
- 911 call center employees and Public Safety Answering Points who can't perform their duties remotely.
- Fusion Center employees.
- Workers – including contracted vendors – who maintain, manufacture, or supply equipment and services supporting law enforcement emergency service and response operations (to include electronic security and life safety security personnel).
- Workers supporting the manufacturing of safety equipment and uniforms for law enforcement, public safety personnel, and first responder.
- Workers supporting the operation of firearm or ammunition product manufacturers, retailers, importers, distributors, and shooting ranges.
- Public agency workers responding to abuse and neglect of children, elders, and dependent adults.
- Workers who support weather disaster / natural hazard mitigation and prevention activities.
- Security staff to maintain building access control and physical security measures.

FOOD AND AGRICULTURE

- Workers supporting groceries, pharmacies, convenience stores, and other retail (including unattended and vending) that sells human food, animal/pet food and pet supply, and beverage products, including retail customer support service and information technology support staff necessary for online orders, pickup and delivery.
- Restaurant carry-out and quick serve food operations, including dark kitchen and food prep centers, and carry-out and delivery food employees.
- Food manufacturer employees and their supplier employees—to include those employed in food ingredient production and processing facilities; livestock, poultry, seafood slaughter facilities; pet and animal feed processing facilities; human food facilities producing by-products for animal food; beverage production facilities; and the production of food packaging.
- Farmers, farm workers, and agribusiness support services to include those employed in auction and sales: grain and oilseed handling, processing and distribution; animal food, feed, and ingredient production, packaging, and distribution; manufacturing, packaging, and distribution of veterinary drugs; truck delivery and transport; farm and fishery labor needed to produce our food supply domestically and for export.
- Farmers, farm workers, support service workers, and their supplier employees to include those engaged in producing and harvesting field crops; commodity inspection; fuel ethanol facilities; biodiesel and renewable diesel facilities; storage facilities; and other agricultural inputs.
- Employees and firms supporting the distribution of food, feed, and beverage and ingredients used in these products, including warehouse workers, vendor- managed inventory controllers and blockchain managers.
- Workers supporting the sanitation and pest control of all food manufacturing processes and operations from wholesale to retail.
- Employees in cafeterias used to feed employees, particularly employee populations sheltered against COVID-19.
- Workers in animal diagnostic and food testing laboratories in private industries and in institutions of higher education.

CONNECT WITH US
www.clsa.gov

For more information,
email CISA.CAT@clsa.dhs.gov



[Linkedin.com/company/cybersecurity-and-infrastructure-security-agency](https://www.linkedin.com/company/cybersecurity-and-infrastructure-security-agency)



@CISAgov | @cyber | @uscert_gov



[Facebook.com/CISA](https://www.facebook.com/CISA)

- Government, private, and non-governmental organizations' workers essential for food assistance programs (including school lunch programs) and government payments.
- Employees of companies engaged in the production, storage, transport, and distribution of chemicals, medicines, vaccines, and other substances used by the food and agriculture industry, including seeds, pesticides, herbicides, fertilizers, minerals, enrichments, and other agricultural production aids.
- Animal agriculture workers to include those employed in veterinary health (including those involved in supporting emergency veterinary or livestock services); raising of animals for food; animal production operations; livestock markets; slaughter and packing plants, manufacturers, renderers, and associated regulatory and government workforce.
- Transportation supporting animal agricultural industries, including movement of animal medical and reproductive supplies and materials, animal vaccines, animal drugs, feed ingredients, feed, and bedding, live animals, animal by-products, and deceased animals for disposal.
- Workers who support sawmills and the manufacture and distribution of fiber and forest products, including, but not limited to timber, paper, and other wood and fiber products.
- Employees engaged in the manufacture and maintenance of equipment and other infrastructure necessary for agricultural production and distribution.

ENERGY

- Workers supporting the energy sector, regardless of the energy source (including but not limited to nuclear, fossil, hydroelectric, or renewable), segment of the system, or infrastructure the worker is involved in, or who are needed to monitor, operate, engineer, and maintain the reliability, safety, environmental health, and physical and cyber security of the energy system.
- Energy/commodity trading/scheduling/marketing functions, who can't perform their duties remotely.
- IT and OT technology for essential energy sector operations including support workers, customer service operations; energy management systems, control systems, and Supervisory Control and Data Acquisition SCADA systems, and energy sector entity data centers; cybersecurity engineers; and cybersecurity risk management.
- Workers supporting the energy sector through renewable energy infrastructure (including, but not limited to wind, solar, biomass, hydrogen, ocean, geothermal, and/or hydroelectric), including those supporting construction, manufacturing, transportation, permitting, operation/maintenance, monitoring, and logistics.
- Workers and security staff involved in nuclear re-fueling operations.
- Providing services related to energy sector fuels (including, but not limited, petroleum (crude oil), natural gas, propane, natural gas liquids, other liquid fuels, nuclear, and coal), supporting the mining, processing, manufacturing, construction, logistics, transportation, permitting, operation/maintenance, security, waste disposal and storage, and monitoring of support for resources.
- Environmental remediation/monitoring, limited to immediate critical needs technicians.
- Manufacturing and distribution of equipment, supplies, and parts necessary to maintain production, maintenance, restoration, and service at energy sector facilities (across all energy sector segments).

Electricity industry:

- Workers who maintain, ensure, or restore, or are involved in the development, transportation, fuel procurement, expansion, or operation of the generation, transmission, and distribution of electric power, including call centers, utility workers, engineers, retail electricity, constraint maintenance, and fleet maintenance technicians who cannot perform their duties remotely.
- Workers at coal mines, production facilities, and those involved in manufacturing, transportation, permitting, operation/maintenance and monitoring at coal sites which is critical to ensuring the reliability of the electrical system.

CONNECT WITH US
www.clsa.gov

For more information,
email CISA.CAT@clsa.dhs.gov



[Linkedin.com/company/cybersecurity-and-infrastructure-security-agency](https://www.linkedin.com/company/cybersecurity-and-infrastructure-security-agency)



@CISAgov | @cyber | @uscert_gov



[Facebook.com/CISA](https://www.facebook.com/CISA)

- Workers who produce, process, ship and handle coal used for power generation and manufacturing.
- Workers needed for safe and secure operations at nuclear generation to include but not limited to, the broader nuclear supply chain, parts to maintain nuclear equipment, fuel manufacturers and fuel components used in the manufacturing of fuel.
- Workers at renewable energy infrastructure (including, but not limited to wind, solar, biomass, hydrogen, geothermal, and/or hydroelectric), including those supporting construction, manufacturing, transportation, permitting, operation/maintenance, monitoring, and logistics.
- Workers at generation, transmission, and electric black start facilities.
- Workers at Reliability Coordinator, Balancing Authorities, and primary and backup Control Centers, including but not limited to independent system operators, regional transmission organizations, and local distribution control centers.
- Mutual assistance personnel which may include workers from outside of the state or local jurisdiction.
- Vegetation management and traffic control for supporting those crews.
- Environmental remediation/monitoring workers limited to immediate critical need technicians.
- Instrumentation, protection, and control technicians.
- Essential support personnel for electricity operations.
- Generator set support workers such as diesel engineers used in power generation including those providing fuel.

Petroleum industry:

- Workers for onshore and offshore petroleum drilling operations; platform and drilling construction and maintenance; transportation (including helicopter operations), maritime transportation, supply, and dredging operations; maritime navigation; well stimulation, intervention, monitoring, automation and control, extraction, production; processing; waste disposal, and maintenance, construction, and operations.
- Workers for crude oil, petroleum and petroleum product storage and transportation, including pipeline, marine transport, terminals, rail transport, storage facilities and racks and road transport for use as end-use fuels such as gasoline, diesel fuel, jet fuel, and heating fuels or feedstocks for chemical manufacturing.
- Petroleum and petroleum product security operations center employees and workers who support maintenance and emergency response services.
- Petroleum and petroleum product operations control rooms/centers and refinery facilities.
- Retail fuel centers such as gas stations and truck stops, and the distribution systems that support them.
- Supporting new and existing construction projects, including, but not limited to, pipeline construction.

Natural Gas, Natural Gas Liquids (NGL), Propane, and other liquid fuels

- Workers who support onshore and offshore drilling operations, platform and drilling construction and maintenance; transportation (including helicopter operations); maritime transportation, supply, and dredging operations; maritime navigation; natural gas and natural gas liquid production, processing, extraction, storage and transportation; well intervention, monitoring, automation and control; waste disposal, and maintenance, construction, and operations.
- Transmission and distribution pipeline workers, including compressor stations and any other required, operations maintenance, construction, and support for natural gas, natural gas liquid, propane, and other liquid fuels.
- Natural gas, propane, natural gas liquids, and other liquid fuel processing plants, including construction, maintenance, and support operations.
- Natural gas processing plants workers, and those that deal with natural gas liquids.
- Workers who staff natural gas, propane, natural gas liquids, and other liquid fuel security operations centers, operations dispatch and control rooms/centers, and emergency response and customer emergencies (including leak calls) operations.
- Drilling, production, processing, refining, and transporting natural gas for use as end-use fuels, feedstocks for

CONNECT WITH US
www.clsa.gov

For more information,
email CISA.CAT@clsa.dhs.gov



[Linkedin.com/company/cybersecurity-and-infrastructure-security-agency](https://www.linkedin.com/company/cybersecurity-and-infrastructure-security-agency)



@CISAgov | @cyber | @uscert_gov



[Facebook.com/CISA](https://www.facebook.com/CISA)

chemical manufacturing, or use in electricity generation.

- Dispatch and control rooms and emergency response and customer emergencies, including propane leak calls.
- Propane gas service maintenance and restoration, including call centers.
- Propane, natural gas liquids, and other liquid fuel distribution centers.
- Propane gas storage, transmission, and distribution centers.
- Supporting new and existing construction projects, including, but not limited to, pipeline construction.
- Ethanol and biofuel production, refining, and distribution.
- Workers in fuel sectors (including, but not limited to nuclear, coal, and gas types and liquid fuels) supporting the mining, manufacturing, logistics, transportation, permitting, operation/maintenance, and monitoring of support for resources.

WATER AND WASTEWATER

Employees needed to operate and maintain drinking water and wastewater/drainage infrastructure, including:

- Operational staff at water authorities.
- Operational staff at community water systems.
- Operational staff at wastewater treatment facilities.
- Workers repairing water and wastewater conveyances and performing required sampling or monitoring, including field staff.
- Operational staff for water distribution and testing.
- Operational staff at wastewater collection facilities.
- Operational staff and technical support for SCADA Control systems.
- Chemical and equipment suppliers to water and wastewater systems and personnel protection.
- Workers who maintain digital systems infrastructure supporting water and wastewater operations.

TRANSPORTATION AND LOGISTICS

- Employees supporting or enabling transportation functions, including truck drivers, bus drivers, dispatchers, maintenance and repair technicians, warehouse workers, truck stop and rest area workers, Department of Motor Vehicle (DMV) employees, towing/recovery services, roadside assistance workers, intermodal transportation personnel, and workers who maintain and inspect infrastructure (including those that require cross-jurisdiction travel).
- Workers supporting the distribution of food, pharmaceuticals (including materials used in radioactive drugs) and other medical materials, fuels, chemicals needed for water or water treatment and energy Maintenance and operation of essential highway infrastructure, including roads, bridges, and tunnels (e.g., traffic operations centers and moveable bridge operators).
- Employees of firms providing services, supplies, and equipment that enable warehouse and operations, including cooling, storing, packaging, and distributing products for wholesale or retail sale or use. Includes cold- and frozen-chain logistics for food and critical biologic products.
- Mass transit workers and providing critical transit services and/or performing critical or routine maintenance to mass transit infrastructure or equipment.
- Employees supporting personal and commercial transportation services – including taxis, delivery services, vehicle rental services, bicycle maintenance and car-sharing services, and transportation network providers.
- Workers responsible for operating and dispatching passenger, commuter and freight trains and maintaining rail infrastructure and equipment.
- Maritime transportation workers, including dredgers, port workers, mariners, ship crewmembers, ship pilots and tug boat operators, equipment operators (to include maintenance and repair, and maritime-specific medical

CONNECT WITH US
www.clsa.gov

For more information,
email CISA.CAT@clsa.dhs.gov



[Linkedin.com/company/cybersecurity-and-infrastructure-security-agency](https://www.linkedin.com/company/cybersecurity-and-infrastructure-security-agency)



@CISAgov | @cyber | @uscert_gov



[Facebook.com/CISA](https://www.facebook.com/CISA)

providers), ship supply, chandler, and repair companies.

- Workers including truck drivers, railroad employees and contractors, maintenance crew, and cleaners supporting transportation of chemicals, hazardous, medical, and waste materials to support critical infrastructure, capabilities, functions, and services, including specialized carriers, crane and rigging industry workers.
- Bus drivers and workers who provide or support intercity, commuter and charter bus service in support of other essential services or functions.
- Automotive repair, maintenance, and transportation equipment manufacturing and distribution facilities (including those who repair and maintain electric vehicle charging stations).
- Transportation safety inspectors, including hazardous material inspectors and accident investigator inspectors.
- Manufacturers and distributors (to include service centers and related operations) of packaging materials, pallets, crates, containers, and other supplies needed to support manufacturing, packaging staging and distribution operations.
- Postal, parcel, courier, last-mile delivery, and shipping and related workers, to include private companies.
- Employees who repair and maintain vehicles, aircraft, rail equipment, marine vessels, bicycles, and the equipment and infrastructure that enables operations that encompass movement of cargo and passengers.
- Air transportation employees, including air traffic controllers and maintenance personnel, ramp workers, aviation and aerospace safety, security, and operations personnel and accident investigations.
- Workers who support the operation, distribution, maintenance, and sanitation, of air transportation for cargo and passengers, including flight crews, maintenance, airport operations, those responsible for cleaning and disinfection, and other on- and off- airport facilities workers.
- Workers supporting transportation via inland waterways such as barge crew, dredging, river port workers for essential goods.
- Workers critical to rental and leasing of vehicles and equipment that facilitate continuity of operations for essential workforces and other essential travel.
- Warehouse operators, including vendors and support personnel critical for business continuity (including HVAC & electrical engineers; security personnel; and janitorial staff) and customer service for essential functions.

PUBLIC WORKS AND INFRASTRUCTURE SUPPORT SERVICES

- Workers who support the operation, inspection, and maintenance of essential public works facilities and operations, including bridges, water and sewer main breaks, fleet maintenance personnel, construction of critical or strategic infrastructure, traffic signal maintenance, emergency location services for buried utilities, maintenance of digital systems infrastructure supporting public works operations, and other emergent issues.
- Workers such as plumbers, electricians, exterminators, builders, contractors, HVAC Technicians, landscapers, and other service providers who provide services that are necessary to maintaining the safety, sanitation, and essential operation of residences, businesses and buildings such as hospitals, senior living facilities, any temporary construction required to support COVID-19 response.
- Workers who support, such as road and line clearing, to ensure the availability of and access to needed facilities, transportation, energy and communications.
- Support to ensure the effective removal, storage, and disposal of residential and commercial solid waste and hazardous waste, including landfill operations.
- Workers who support the operation, inspection, and maintenance of essential dams, locks and levees.
- Workers who support the inspection and maintenance of aids to navigation, and other government provided services that ensure continued maritime commerce.

CONNECT WITH US
www.clsa.gov

For more information,
email CISA.CAT@clsa.dhs.gov



[Linkedin.com/company/cybersecurity-and-infrastructure-security-agency](https://www.linkedin.com/company/cybersecurity-and-infrastructure-security-agency)



@CISAgov | @cyber | @uscert_gov



[Facebook.com/CISA](https://www.facebook.com/CISA)

COMMUNICATIONS AND INFORMATION TECHNOLOGY

Communications:

- Maintenance of communications infrastructure- including privately owned and maintained communication systems- supported by technicians, operators, call -centers, wireline and wireless providers, cable service providers, satellite operations, Internet Exchange Points, Points of Presence, Network Access Points, back haul and front haul facilities, and manufacturers and distributors of communications equipment.
- Government and private sector employees (including government contractors) with work related to undersea cable infrastructure and support facilities, including cable landing sites, beach manhole vaults and covers, submarine cable depots and submarine cable ship facilities.
- Government and private sector employees (including government contractors) supporting Department of Defense internet and communications facilities.
- Workers who support radio, television, and media service, including, but not limited to front-line news reporters, studio, and technicians for newsgathering, and reporting, and publishing news.
- Network Operations staff, engineers and/or technicians to include IT managers and staff, HVAC & electrical engineers, security personnel, software and hardware engineers, and database administrators that manage the network or operate facilities.
- Engineers, technicians and associated personnel responsible for infrastructure construction and restoration, including contractors for construction and engineering of fiber optic cables, buried conduit, small cells, other wireless facilities, and other communications sector-related infrastructure. This includes construction of new facilities and deployment of new technology as these are required to address congestion or customer usage due to unprecedented use of remote services.
- Installation, maintenance and repair technicians that establish, support or repair service as needed.
- Central office personnel to maintain and operate central office, data centers, and other network office facilities, critical support personnel assisting front line employees.
- Customer service and support staff, including managed and professional services as well as remote providers of support to transitioning employees to set up and maintain home offices, who interface with customers to manage or support service environments and security issues, including payroll, billing, fraud, logistics, and troubleshooting.
- Workers providing electronic security, fire, monitoring and life safety services, and to ensure physical security, cleanliness and safety of facilities and personnel, including temporary licensing waivers for security personnel to work in other States of Municipalities.
- Dispatchers involved with service repair and restoration.
- Retail customer service personnel at critical service center locations for onboarding customers, distributing and repairing equipment and addressing customer issues in order to support individuals' remote emergency communications needs, supply chain and logistics personnel to ensure goods and products are on-boarded to provision these front-line employees.
- External Affairs personnel to assist in coordinating with local, state and federal officials to address communications needs supporting COVID-19 response, public safety, and national security.

Information Technology:

- Workers who support command centers, including, but not limited to Network Operations Command Centers, Broadcast Operations Control Centers and Security Operations Command Centers.
- Data center operators, including system administrators, HVAC & electrical engineers, security personnel, IT managers and purchasers, data transfer solutions engineers, software and hardware engineers, and database administrators, for all industries (including financial services).

CONNECT WITH US
www.clsa.gov

For more information,
email CISA.CAT@clsa.dhs.gov



[Linkedin.com/company/cybersecurity-and-infrastructure-security-agency](https://www.linkedin.com/company/cybersecurity-and-infrastructure-security-agency)



@CISAgov | @cyber | @uscert_gov



[Facebook.com/CISA](https://www.facebook.com/CISA)

- Workers who support client service centers, field engineers, and other technicians and workers supporting critical infrastructure, as well as manufacturers and supply chain vendors that provide hardware and software, support services, research and development, and information technology equipment (to include microelectronics and semiconductors), and HVAC and electrical equipment for critical infrastructure, and test labs and certification agencies that qualify such equipment (to include microelectronics, optoelectronics, and semiconductors) for critical infrastructure, including data centers.
- Workers needed to preempt and respond to cyber incidents involving critical infrastructure, including medical facilities, SLTT governments and federal facilities, energy and utilities, and banks and financial institutions, securities/other exchanges, other entities that support the functioning of capital markets, public works, critical manufacturing, food & agricultural production, transportation, and other critical infrastructure categories and personnel, in addition to all cyber defense workers (who can't perform their duties remotely).
- Suppliers, designers, transporters and other workers supporting the manufacture, distribution and provision and construction of essential global, national and local infrastructure for computing services (including cloud computing services and telework capabilities), business infrastructure, financial transactions/services, web-based services, and critical manufacturing.
- Workers supporting communications systems and information technology- and work from home solutions- used by law enforcement, public safety, medical, energy, public works, critical manufacturing, food & agricultural production, financial services, education, and other critical industries and businesses.
- Employees required in person to support Software as a Service businesses that enable remote working, performance of business operations, distance learning, media services, and digital health offerings, or required for technical support crucial for business continuity and connectivity.

OTHER COMMUNITY- OR GOVERNMENT-BASED OPERATIONS AND ESSENTIAL FUNCTIONS

- Workers to ensure continuity of building functions, including but not limited to security and environmental controls (e.g., HVAC), the manufacturing and distribution of the products required for these functions, and the permits and inspections for construction supporting essential infrastructure.
- Elections personnel to include both public and private sector elections support.
- Workers supporting the operations of the judicial system.
- Federal, State, and Local, Tribal, and Territorial employees who support Mission Essential Functions and communications networks.
- Trade Officials (FTA negotiators; international data flow administrators).
- Employees necessary to maintain news and media operations across various media.
- Employees supporting Census 2020.
- Weather forecasters.
- Clergy for essential support.
- Workers who maintain digital systems infrastructure supporting other critical government operations.
- Workers who support necessary credentialing, vetting and licensing operations for critical infrastructure workers.
- Customs and immigration workers who are critical to facilitating trade in support of the national emergency response supply chain.
- Educators supporting public and private K-12 schools, colleges, and universities for purposes of facilitating distance learning or performing other essential functions.
- Staff at government offices who perform title search, notary, and recording services in support of mortgage and real estate services and transactions.

CONNECT WITH US
www.clsa.gov

For more information,
email CISA.CAT@clsa.dhs.gov



[Linkedin.com/company/cybersecurity-and-infrastructure-security-agency](https://www.linkedin.com/company/cybersecurity-and-infrastructure-security-agency)



@CISAgov | @cyber | @uscert_gov



[Facebook.com/CISA](https://www.facebook.com/CISA)

- Residential and commercial real estate services, including settlement services.
- Workers supporting essential maintenance, manufacturing, design, operation, inspection, security, and construction for essential products, services, and supply chain and COVID 19 relief efforts.

CRITICAL MANUFACTURING

- Workers necessary for the manufacturing of metals (including steel and aluminum), industrial minerals, semiconductors, materials and products needed for medical supply chains, and for supply chains associated with transportation, energy, communications, information technology, food and agriculture, chemical manufacturing, nuclear facilities, wood products, commodities used as fuel for power generation facilities, the operation of dams, water and wastewater treatment, processing and reprocessing of solid waste, emergency services, and the defense industrial base. Additionally, workers needed to maintain the continuity of these manufacturing functions and associated supply chains, and workers necessary to maintain a manufacturing operation in warm standby.
- Workers necessary for the manufacturing of materials and products needed to manufacture medical equipment and personal protective equipment (PPE).
- Workers necessary for mining and production of critical minerals, materials and associated essential supply chains, and workers engaged in the manufacture and maintenance of equipment and other infrastructure necessary for mining production and distribution.
- Workers who produce or manufacture parts or equipment that supports continued operations for any essential services and increase in remote workforce (including computing and communication devices, semiconductors, and equipment such as security tools for Security Operations Centers (SOCs) or datacenters).

HAZARDOUS MATERIALS

- Workers who manage hazardous materials associated with any other essential activity, including but not limited to healthcare waste (medical, pharmaceuticals, medical material production), testing operations (laboratories processing test kits), and energy (nuclear facilities) Workers at nuclear facilities, workers managing medical waste, workers managing waste from pharmaceuticals and medical material production, and workers at laboratories processing tests Workers who support hazardous materials response and cleanup.
- Workers who maintain digital systems infrastructure supporting hazardous materials management operations.

FINANCIAL SERVICES

- Workers who are needed to provide, process and maintain systems for processing, verification, and recording of financial transactions and services, including payment, clearing, and settlement; wholesale funding; insurance services; consumer and commercial lending; and capital markets activities).
- Workers who are needed to maintain orderly market operations to ensure the continuity of financial transactions and services.
- Workers who are needed to provide business, commercial, and consumer access to bank and non-bank financial services and lending services, including ATMs, lending and money transmission, and to move currency, checks, securities, and payments (e.g., armored cash carriers).
- Workers who support financial operations and those staffing call centers, such as those staffing data and security operations centers, managing physical security, or providing accounting services.
- Workers supporting production and distribution of debit and credit cards.
- Workers providing electronic point of sale support personnel for essential businesses and workers.

CONNECT WITH US
www.clsa.gov

For more information,
email CISA.CAT@clsa.dhs.gov



[Linkedin.com/company/cybersecurity-and-infrastructure-security-agency](https://www.linkedin.com/company/cybersecurity-and-infrastructure-security-agency)



@CISAgov | @cyber | @uscert_gov



[Facebook.com/CISA](https://www.facebook.com/CISA)

CHEMICAL

- Workers supporting the chemical and industrial gas supply chains, including workers at chemical manufacturing plants, workers in laboratories, workers at distribution facilities, workers who transport basic raw chemical materials to the producers of industrial and consumer goods, including hand sanitizers, food and food additives, pharmaceuticals, paintings and coatings, textiles, building materials, plumbing, electrical, and paper products.
- Workers supporting the safe transportation of chemicals, including those supporting tank truck cleaning facilities and workers who manufacture packaging items.
- Workers supporting the production of protective cleaning and medical solutions, personal protective equipment, disinfectants, fragrances, and packaging that prevents the contamination of food, water, medicine, among others essential.
- Workers supporting the operation and maintenance of facilities (particularly those with high risk chemicals and/or sites that cannot be shut down) whose work cannot be done remotely and requires the presence of highly trained personnel to ensure safe operations, including plant contract workers who provide inspections.
- Workers who support the production and transportation of chlorine and alkali manufacturing, single-use plastics, and packaging that prevents the contamination or supports the continued manufacture of food, water, medicine, and other essential products, including glass container manufacturing.

DEFENSE INDUSTRIAL BASE

- Workers who support the essential services required to meet national security commitments to the federal government and U.S. Military. These individuals include, but are not limited to, space and aerospace; mechanical and software engineers (various disciplines), manufacturing/production workers; IT support; security staff; security personnel; intelligence support, aircraft and weapon system mechanics and maintainers; and sanitary workers who maintain the hygienic viability of necessary facilities.
- Personnel working for companies, and their subcontractors, who perform under contract or sub-contract to the Department of Defense, as well as personnel at government-owned/contractor-operated and government-owned/government-operated facilities, and who provide materials and services to the Department of Defense, including support for weapon systems, software systems and cybersecurity, defense and intelligence communications and surveillance, space systems and other activities in support of our military, intelligence and space forces.

COMMERCIAL FACILITIES

- Workers who support the supply chain of building materials from production through application/installation, including cabinetry, fixtures, doors, cement, hardware, plumbing, electrical, heating/cooling, refrigeration, appliances, paint/coatings, and employees who provide services that enable repair materials and equipment for essential functions.
- Workers supporting ecommerce through distribution, warehouse, call center facilities, and other essential operational support functions.
- Workers in hardware and building materials stores, consumer electronics, technology and appliances retail, and related merchant wholesalers and distributors - with reduced staff to ensure continued operations.
- Workers distributing, servicing, repairing, installing residential and commercial HVAC systems, boilers, furnaces and other heating, cooling, refrigeration, and ventilation equipment.

RESIDENTIAL/SHELTER FACILITIES AND SERVICES

- Workers in dependent care services, in support of workers in other essential products and services.

CONNECT WITH US
www.clsa.gov

For more information,
 email CISA.CAT@clsa.dhs.gov



[Linkedin.com/company/cybersecurity-and-infrastructure-security-agency](https://www.linkedin.com/company/cybersecurity-and-infrastructure-security-agency)



@CISAgov | @cyber | @uscert_gov



[Facebook.com/CISA](https://www.facebook.com/CISA)

- Workers who support food, shelter, and social services, and other necessities of life for needy groups and individuals, including in-need populations and COVID-19 responders (including travelling medical staff).
- Workers in animal shelters.
- Workers responsible for the leasing of residential properties to provide individuals and families with ready access to available housing.
- Workers responsible for handling property management, maintenance, and related service calls who can coordinate the response to emergency “at-home” situations requiring immediate attention, as well as facilitate the reception of deliveries, mail, and other necessary services.
- Workers performing housing construction related activities to ensure additional units can be made available to combat the nation’s existing housing supply shortage.
- Workers performing services in support of the elderly and disabled populations who coordinate a variety of services, including health care appointments and activities of daily living.
- Workers supporting the construction of housing, including those supporting government functions related to the building and development process, such as inspections, permitting and plan review services that can be modified to protect the public health, but fundamentally should continue and serve the construction of housing (e.g., allow qualified private third-party inspections in case of government shutdown).

HYGIENE PRODUCTS AND SERVICES

- Workers who produce hygiene products.
- Workers in laundromats, laundry services, and dry cleaners.
- Workers providing personal and household goods repair and maintenance.
- Workers providing disinfection services, for all essential facilities and modes of transportation, and supporting the sanitation of all food manufacturing processes and operations from wholesale to retail.
- Workers necessary for the installation, maintenance, distribution, and manufacturing of water and space heating equipment and its components.
- Support required for continuity of services, including commercial disinfectant services, janitorial/cleaning personnel, and support personnel functions that need freedom of movement to access facilities in support of front-line employees.

CONNECT WITH US
www.clsa.gov

For more information,
email CISA.CAT@clsa.dhs.gov



[Linkedin.com/company/cybersecurity-and-infrastructure-security-agency](https://www.linkedin.com/company/cybersecurity-and-infrastructure-security-agency)



[@CISAgov](https://twitter.com/CISAgov) | [@cyber](https://twitter.com/cyber) | [@uscert_gov](https://twitter.com/uscert_gov)



[Facebook.com/CISA](https://www.facebook.com/CISA)

EXHIBIT E

DECLARATION OF LOCAL EMERGENCY

WHEREAS, Los Angeles Administrative Code Section 8.27 provides that the Mayor of the City of Los Angeles may declare the existence of a local emergency during incidents that exceed or are likely to exceed normal services, personnel, equipment, and facilities of the regularly constituted branches and departments of City government; and

WHEREAS, conditions of disaster or of extreme peril to the safety of persons and property have arisen both Internationally and within the United States as a result of the introduction of the novel coronavirus (COVID-19), a novel communicable disease, which was first detected in Wuhan City, Hubei Province, China in December 2019; and

WHEREAS COVID-19 has spread globally to over 70 countries, infecting more than 92,800 persons and killing more than 3,160 individuals worldwide. Due to the expanding list of countries with widespread transmission of COVID-19, and increasing travel alerts and warnings for countries experiencing sustained or uncontrolled community transmission issued by the Centers for Disease Control and Prevention (CDC), COVID-19 has created conditions that are likely to be beyond the control of local resources and require the combined forces of other political subdivisions to combat; and

WHEREAS, on February 26, 2020, the CDC confirmed the first case of local person-to-person transmission of COVID-19 in the United States and this case raises the possibility of community transmission occurring in the general public, the Health Officer of Los Angeles County has determined that there is an imminent threat to the public health from the introduction of COVID-19 in the City of Los Angeles, and has declared a Local Health Emergency and the Los Angeles County Board of Supervisors has proclaimed the existence of a local emergency for the County of Los Angeles; and

WHEREAS, the City's ability to mobilize local resources, coordinate interagency response, accelerate procurement of vital supplies, use mutual aid, and seek future reimbursement by the State and Federal governments will be critical to successfully responding to COVID-19; and

WHEREAS, these conditions warrant and necessitate that the City of Los Angeles declare the existence of a local emergency.

NOW THEREFORE, I hereby declare the existence of a local emergency and direct the Emergency Operations Organization (EOO) to take the necessary steps for the protection of life, health and safety in the City of Los Angeles.

IT IS FURTHER ORDERED AND DECLARED, that during the existence of said local emergency the powers, functions, and duties of the Emergency Operations Organization of the City shall be those prescribed by state law, by ordinances, and resolutions of the City; and

I FURTHER DIRECT, that all City Departments shall review and revise their Continuity of Operations Plans (COOP) to address the risks COVID-19 poses to their critical functions in coordination with the Emergency Management Department (EMD) and shall coordinate all crisis communications to employees and the public with EMD; and

I FURTHER DIRECT, that all City Departments shall track costs for staffing, supplies, and equipment related to COVID-19 preparation and prevention and forward that information to the Office of the City Administrative Officer (CAO); and

I FURTHER DIRECT, that EMD shall coordinate Citywide planning, preparedness and response efforts regarding COVID-19 with the Los Angeles County Department of Public Health (LACODPH) and the Los Angeles County Office of Emergency Management (LACOOEM).

I THEREFORE DIRECT, that the Declaration of Local Emergency shall take effect immediately and that widespread publicity and notice shall be given said Declaration through the most feasible and adequate means of disseminating such notice throughout the City.

IT IS FURTHER DECLARED AND ORDERED, that a copy of this Declaration be forwarded to the Los Angeles County Office of Emergency Management to be forwarded to the Director of the California Governor's Office of Emergency Services requesting that the Director find it acceptable in accordance with State law; that the Governor of California pursuant to the Emergency Services Act, issue a proclamation declaring an emergency in Los Angeles County; that the Governor waive regulations that may hinder response and recovery efforts; that response and recovery assistance be made available under the California Disaster Assistance Act; and that the State expedite access to State and Federal resources and any other appropriate federal disaster relief programs.

Dated at Los Angeles, California

March 4, 2020

Time:

Filed with the City Clerk

Date: March 4, 2020

Time: 10:21am

Initials: L-D

Signed



ERIC GARCETTI

Mayor

EXHIBIT F



ERIC GARCETTI
MAYOR

Public Order Under City of Los Angeles Emergency Authority

Issue Date: March 15, 2020

Subject: New City Measures to Address COVID-19

On March 4, 2020, I declared a local emergency in relation to the arrival of the COVID-19 virus in our community, and on March 12, 2020, I ordered a number of measures to be taken across the City to protect members of the public and City workers from an undue risk of contracting the COVID-19 virus. Our precautions over the past weeks and what we do over the next few days and weeks will determine how well we weather this emergency.

On March 11, 2020, the World Health Organization characterized COVID-19 as a pandemic. The Centers for Disease Control and Prevention advises us that COVID-19 spreads easily from person to person and has issued guidelines recommending that the public adopt policies and routines to enable social distancing wherever possible.

Here in the City of Los Angeles, we must redouble our efforts to maintain hand hygiene, respiratory etiquette, and social distancing. It is absolutely critical that we as a City do everything we can to slow the pace of community spread and avoid unnecessary strain on our medical system. To aid in our efforts, under the emergency authorities vested in my office under the laws of the City of Los Angeles, today I am ordering that a series of temporary restrictions be placed on certain establishments throughout our City in which large numbers of people tend to gather and remain in close proximity. By virtue of authority vested in me as Mayor of the City of Los Angeles pursuant to the provisions of the Los Angeles Administrative Code, Chapter 3, Section 8.29 to promulgate, issue, and enforce rules, regulations, orders, and directives, I hereby declare the following orders to be necessary for the protection of life and property and I hereby order, effective at 11:59 p.m. tonight, until March 31, 2020 at 12:00 p.m., that:

1. All bars and nightclubs in the City of Los Angeles that do not serve food shall be closed to the public.

2. Any bars or nightclubs in the City of Los Angeles that serve food may remain open only for purposes of continuing to prepare and offer food to customers via delivery service or to be picked up. Dine-in food service is prohibited.

3. All restaurants and retail food facilities in the City of Los Angeles shall be prohibited from serving food for consumption on premises. Restaurants and retail food facilities may continue to operate for purposes of preparing and offering food to customers via delivery service, to be picked up or for drive-thru. For those establishments offering food pick-up options, proprietors are directed to establish social distancing practices for those patrons in the queue for pick-up.

4. The following are exempt from this Order:

- A. Cafeterias, commissaries, and restaurants located within hospitals, nursing homes, or similar facilities
- B. Grocery stores
- C. Pharmacies
- D. Food banks
- E. Los Angeles World Airports concessionaires

5. Trucks and other vehicles engaged in the delivery of grocery items to grocery stores, when such items are to be made available for sale to the public, are hereby exempt from having to comply with any City rules and regulations that limit the hours for such deliveries, including, without limitation, Los Angeles Municipal Code Section 12.22 A.23(b)(3) and Los Angeles Municipal Code Section 114.03.

6. All movie theaters, live performance venues, bowling alleys and arcades shall be closed to the public.

7. All gyms and fitness centers shall be closed to the public.

Any violation of the above prohibitions may be referred to the Office of the City Attorney for prosecution under Los Angeles Administrative Code Section 8.77, which provides for fines not to exceed \$1,000 or imprisonment not to exceed six months. Each individual officer should use their discretion in enforcing this order and always keep the intent of the order in mind.

In addition, I hereby issue guidance to the leaders of the City's houses of worship and urge them, in the strongest possible terms, to limit gatherings on their premises and to explore and implement ways to practice their respective faiths while observing social distancing practices.

Finally, I hereby order that no landlord shall evict a residential tenant in the City of Los Angeles during this local emergency period if the tenant is able to show an inability to pay rent due to circumstances related to the COVID-19 pandemic. These

circumstances include loss of income due to a COVID-19 related workplace closure, child care expenditures due to school closures, health care expenses related to being ill with COVID-19 or caring for a member of the tenant's household who is ill with COVID-19, or reasonable expenditures that stem from government-ordered emergency measures. Nothing in this subsection shall be construed to mean that the tenant will not still be obligated to pay lawfully charged rent. Tenants will have up to six months following the expiration of the local emergency period to repay any back due rent. Tenants may use the protections afforded in this subsection as an affirmative defense in an unlawful detainer action. This subsection shall remain in effect during the pendency of the local emergency period.

This order may be extended prior to March 31, 2020.

EXHIBIT G



ERIC GARCETTI
MAYOR

Public Order Under City of Los Angeles Emergency Authority

Issue Date: March 19, 2020

Subject: SAFER AT HOME

The novel coronavirus pandemic is a global emergency that is unprecedented in modern history. Profoundly impacting our daily lives, it has inspired Angelenos to respond with courage, compassion, wisdom and resolve to overcome this crisis and help each other.

In a short period of time and at an unprecedented scale, residents in every community have embraced urgent social distancing best practices and aggressive hygienic precaution, not just to protect themselves, but to protect others. Angelenos understand with exceptional clarity that there is only one way to get through this difficult moment: together.

The City's recent emergency orders — curtailing large public gatherings; temporarily closing many government facilities; closing theaters, bars and entertainment venues; prohibiting restaurants from serving to dine-in customers while permitting take-out, delivery and drive-thru; and a moratorium on evictions of residential and commercial tenants — have been followed with a willing and generous spirit.

While we have previously taken strong action, now the City must adopt additional emergency measures to further limit the spread of COVID-19.

With this virus, we are safer at home.

Wherever feasible, City residents must isolate themselves in their residences, subject to certain exceptions provided below.

Under the provisions of Section 231(i) of the Los Angeles City Charter and Chapter 3, Section 8.27 of the Los Angeles Administrative Code, I hereby declare the following

orders to be necessary for the protection of life and property in the City of Los Angeles, effective on Thursday, March 19, 2020 at 11:59 PM:

1. Subject only to the exceptions outlined in this Paragraph and Paragraph 5 below, all persons living within the City of Los Angeles are hereby ordered to remain in their homes. Residents of the City of Los Angeles who are experiencing homelessness are exempt from this requirement. The City is working, along with partner government agencies and non-governmental organizations, to make more emergency shelters available for the unhoused residents of our City. City of Los Angeles officials and contracted partners responsible for homelessness outreach shall make every reasonable effort to persuade such residents to accept, if offered, temporary housing or shelter, as the Health Officer of the County of Los Angeles recommends that sheltering individuals will assist in reducing the spread of the virus and will protect the individual from potential exposure by allowing the individual access to sanitation tools. People at high risk of severe illness from COVID-19 and people who are sick are urged to stay in their residence to the extent possible except as necessary to seek medical care.

2. Subject only to the exceptions outlined in this Paragraph and Paragraph 5 below, all businesses within the City of Los Angeles are ordered to cease operations that require in-person attendance by workers at a workplace (including, without limitation, indoor malls and indoor shopping centers, including all stores except for those stores considered essential activities or infrastructure under this Order which are directly accessible to the public from the exterior of the mall or shopping center - the interior of the indoor mall or indoor shopping center shall remain closed to the public). To the extent that business operations may be maintained by telecommuting or other remote means, while allowing all individuals to maintain shelter in their residences, this order shall not apply to limit such business activities.

3. All public and private gatherings of any number of people occurring outside a residence are prohibited, except as to those exempted activities described in this Paragraph and Paragraph 5. This provision does not apply to gatherings within a single household or living unit.

4. All travel, including, without limitation, travel on foot, bicycle, scooter, motorcycle, automobile, or public transit is prohibited, subject to the exceptions in Paragraph 5.

5. Exceptions. People may lawfully leave their residence while this Order is in effect only to engage in the following activities:

(i) First 24 hour allowance. This Order shall not apply, for a 24-hour period following the effective date above, to allow employees and business owners to access to their workplaces to gather belongings or address other administrative needs, so long as social distancing requirements are followed. Such workplaces shall remain closed to the public in accordance with this Order.

(ii) Essential Activities. To engage in certain essential activities, including, without limitation, visiting a health or veterinary care professional, obtaining medical supplies or medication, obtaining grocery items (including, without limitation, canned food, dry goods, fresh fruits and vegetables, pet supplies, fresh or frozen meats, fish, and poultry, any other household consumer products and products necessary to maintain the safety and sanitation of residences and other buildings) for their household or to deliver to others, or for legally mandated government purposes. In addition, any travel related to (a) providing care for minors, the elderly, dependents, persons with disabilities, or other vulnerable persons; (b) returning to one's place of residence from outside the City; (c) travelling to one's place of residence located outside the City; (d) compliance with an order of law enforcement or court shall be exempt from this Order; or (e) legally mandated government purposes. Persons engaging in these essential activities shall maintain reasonable social distancing practices. This includes maintaining a distance of at least six-feet away from others, frequently washing hands with soap and water for at least twenty seconds or using hand sanitizer, covering coughs or sneezes (into the sleeve or elbow, not hands), regularly cleaning high-touch surfaces, and not shaking hands.

(iii) Outdoor Activities. To engage in outdoor activity and recreation, provided that the individuals comply with social distancing requirements, including, without limitation, walking, hiking, running, cycling; use of scooters, roller skates, skateboards, or other personal mobility devices; or travel in a vehicle with household members to a location where it is possible to walk, hike, run or ride a bike, or operate personal mobility devices, while maintaining social distancing practices. Indoor and outdoor playgrounds for children, except those located within childcare centers, shall be closed for all purposes.

(iv) Work in Support of Essential Activities. To perform work providing essential products and services or to otherwise carry out activities specifically permitted in this Order.

(v) To care for or support a friend, family member, or pet in another household.

(vi) Emergency Personnel. All first responders, gang and crisis intervention workers, public health workers, emergency management personnel, emergency dispatchers, law enforcement personnel, and related contractors and others working for emergency services providers are categorically exempt from this Order.

(vii) Essential Activities Exempt. Certain business operations and activities are exempt from the provisions of this Order, on the grounds that they provide services that are recognized to be critical to the health and well-being of the City. These include:

(a) All healthcare operations, including hospitals, clinics, dentists, pharmacies, pharmaceutical and biotechnology companies, medical and scientific research, laboratories, healthcare suppliers, home healthcare services providers, veterinary care providers, mental and behavioral health providers, substance use

providers, physical therapists and chiropractors, cannabis dispensaries, or any related and/or ancillary healthcare services, manufacturers and suppliers. Healthcare operations does not include fitness and exercise gyms and similar facilities.

(b) Grocery stores, water retailers, certified farmers' markets, farm and produce stands, supermarkets, convenience stores, warehouse stores, food banks, convenience stores, and other establishments engaged in the retail sale of canned food, dry goods, fresh fruits and vegetables, pet supply, fresh or frozen meats, fish, and poultry, any other household consumer products (such as construction supplies, cleaning and personal care products). This includes stores that sell groceries and sell other non-grocery products, and products necessary to maintaining the safety, sanitation, and essential operation of residences.

(c) Food cultivation, including farming, livestock, and fishing.

(d) Organizations and businesses that provide food, shelter, and social services, and other necessities of life for economically disadvantaged or otherwise needy individuals (including gang prevention and intervention, domestic violence, and homeless services agencies).

(e) Newspapers, television, radio, magazine, podcast and other media services.

(f) Gas service stations, auto supply, mobile auto repair operations, auto repair shops (including, without limitation, auto repair shops that operate adjacent to or otherwise in connection with an used or retail auto dealership), bicycle repair shops and related facilities.

(g) Banks, credit unions, financial institutions and insurance companies.

(h) Hardware and building supply stores, and nurseries.

(i) Plumbers, electricians, exterminators, custodial/janitorial workers, handyman services, funeral home workers and morticians, moving services, HVAC installers, carpenters, landscapers, gardeners, property managers, private security personnel and other service providers who provide services to maintain the safety, sanitation, and essential operation to properties and other essential activities discussed in this subsection.

(j) Businesses providing mailing and shipping services, including post office boxes.

(k) Educational institutions -- including public and private K-12 schools, colleges, and universities -- for purposes of facilitating distance learning or performing essential functions provided that social distancing of six-feet per person is maintained to the greatest extent possible.

(l) Laundromats, dry cleaners, and laundry service providers.

(m) Restaurants and retail food facilities that prepare and offer food to customers, but only via delivery service, to be picked up, or drive-thru. For those establishments offering food pick-up options, proprietors are directed to establish social distancing practices for those patrons in the queue for pick-up. This includes maintaining a distance of at least six-feet away from others. Schools and other entities that typically provide free food services to students or members of the public may continue to do so under this Order on the condition that the food is provided to students

or members of the public on a pick-up and carry out basis only. Schools and other entities that provide food services under this exemption shall not permit the food to be eaten at the site where it is provided, or any other gathering site. Cafeterias, commissaries, and restaurants located within hospitals, nursing homes, or similar facilities are also exempt from this Order. Social distancing shall be maintained at a distance of at least six-feet away from others

(n) Businesses that supply products needed for people to work from home.

(o) Businesses that supply other essential businesses with the support, services, or supplies necessary to operate, provided that strict social distancing is maintained. This section includes, without limitation, utility companies.

(p) Individuals and businesses that ship or deliver groceries, food, beverages or goods directly to residences or businesses, including rail and trucking.

(q) Airlines, taxis, ride sharing services, and other private transportation services providing transportation services necessary for essential activities and other purposes expressly authorized in this Order.

(r) Home-based care for disabled persons, seniors, adults, or children.

(s) Residential facilities and shelters for homeless residents, disabled persons, seniors, adults, children and animals.

(t) Professional services, such as legal, payroll or accounting services, when necessary to assist in compliance with legally mandated activities.

(u) Childcare facilities providing services that enable employees exempted in this Order to work as permitted. To the extent possible, childcare facilities must operate under the following mandatory conditions:

(1) Childcare must be carried out in stable groups of 12 or fewer ("stable" means that the same 12 or fewer children are in the same group each day).

(2) Children shall not change from one group to another.

(3) If more than one group of children is cared for at one facility, each group shall be in a separate room. Groups shall not mix with each other.

(4) Childcare providers shall remain solely with one group of children.

(v) Hotels, motels, shared rental units and similar facilities.

(w) Military/Defense Contractors/FFRDC (Federally Funded Research and Development Centers). For purposes of this Order, essential personnel may leave their residence to provide any service or perform any work deemed essential for national security including, without limitation, defense, intelligence, and aerospace development and manufacturing for the Department of Defense, the Intelligence Community, and NASA and other federal government, and or United States Government departments and agencies. Essential personnel include prime, sub-prime, and supplier contractor employees, at both the prime contract level and any supplier level at any tier, working on federal United States Government contracts, such as contracts for national intelligence and national security requirements.

(viii) Government Employees. This Order does not apply to employees of government agencies working within the course and scope of their public service employment. Employees of the City of Los Angeles shall follow any current or future directives issued by the Mayor.

(ix) Essential Infrastructure. Individuals may leave their residences to provide any services or goods or perform any work necessary to to build, operate, maintain or manufacture essential infrastructure, including without limitation construction of commercial, office and institutional buildings, residential buildings and housing; airport operations, food supply, concessions, and construction; port operations and construction; water, sewer, gas, electrical, oil extraction and refining; roads and highways, public transportation and rail; solid waste collection and removal; flood control and watershed protection; internet and telecommunications systems (including the provision of essential global, national, and local infrastructure for computing services, business infrastructure, communications, and web-based services); and manufacturing and distribution companies deemed essential to the supply chains of the industries referenced in this Paragraph, provided that they carry out those services and that work in compliance with social distancing practices as prescribed by the Centers for Disease Control and Prevention and the Los Angeles County Department of Public Health, to the extent possible.

6. To the extent that this Order is in conflict with earlier Orders, this Order shall supersede the others.

7. Failure to comply with this Order shall constitute a misdemeanor subject to fines and imprisonment. I hereby urge the Los Angeles Police Department and the City Attorney to vigorously enforce this Order via Sections 8.77 and 8.78 of the Los Angeles Administrative Code.

8. If any subsection, sentence, clause, phrase, or word of this Order or any application of it to any person, structure, or circumstance is held to be invalid or unconstitutional by a decision of a court of competent jurisdiction, then such decision shall not affect the validity of the remaining portions or applications of this Order.

This order shall be in place until April 19, 2020, and it may be extended prior to that time.

EXHIBIT H



MAYOR GARCETTI, CITY ATTORNEY FEUER: 'SAFER AT HOME' EMERGENCY ORDER WILL BE STRONGLY ENFORCED

MARCH 24, 2020

LOS ANGELES – Mayor Eric Garcetti and City Attorney Mike Feuer today assured strong enforcement of the City's "Safer at Home" emergency order, which requires Angelenos to stay in their residences in response to the COVID-19 pandemic.

"We're all safer at home, and that's not a suggestion – it is the law," said Mayor Garcetti. "Refusing to follow it isn't brave or funny – it's stupid and could wind up killing you or someone else. Angelenos are doing an extraordinary job of staying in their homes, and we won't tolerate the selfish behavior of a few who unnecessarily put our community at risk."

The "Safer at Home" order (<https://www.lamayor.org/mayor-garcetti-angelenos-are-%E2%80%98safer-home-new-emergency-order-stops-non-essential-activities-outside>) requires Angelenos to remain in their homes except for the most essential activities – including critical tasks such as securing food and health, safety and medical necessities, as well as caring for children, elder adults, family, friends and people with disabilities. Failure to heed the order is a misdemeanor that can result in fines or jail time.

City Attorney Feuer has assigned his Neighborhood Prosecutor team to work with the Los Angeles Police Department to seek compliance and enforce the City's order when necessary.

"In the strongest possible terms, I urge that Angelenos adhere to the 'Safer at Home' Order, and non-essential businesses shut their doors," said City Attorney Feuer. "Those crucial steps protect all of us. As part of the City team, my Office's Neighborhood Prosecutors will work toward gaining compliance with the Order, helping ensure that our families are safe."

In addition to the City Attorney's Neighborhood Prosecutors, the Mayor announced the formation of the "Safer at Home" Business Ambassadors program – which deploys City workers and volunteers with the Mayor's Crisis Response Team to businesses that appear to be out of compliance with the emergency order with a goal of securing voluntary

compliance. If voluntary compliance is not achieved, the ambassadors will share information with the City Attorney and LAPD for follow-up. Members of the public can report out-of-compliance businesses at coronavirus.lacity.org/reportbusinessviolation (<http://coronavirus.lacity.org/REPORTBUSINESSVIOLATION>).

Mayor Garcetti has taken a number of emergency measures to combat the spread of the novel coronavirus, including a plan (<https://www.lamayor.org/mayor-garcetti-la-will-open-thousands-temporary-shelter-beds-homeless-angelenos-part-covid-19>) to quickly shelter thousands of Angelenos experiencing homelessness; restrictions (<https://www.lamayor.org/mayor-garcetti-issues-temporary-restrictions-help-slow-spread-novel-coronavirus-protect-public>) placed on bars, nightclubs, restaurants, movie theaters, entertainment venues, bowling alleys and arcades, gyms and fitness centers; and limits (<https://www.lamayor.org/sites/g/files/wph446/f/article/files/Mayor%20Memo%20-COVID-19%20LA%20City%20Guidelines.pdf>) on public gatherings in City facilities.

The Mayor has also taken several steps to support residents and businesses during the local emergency – including placing a moratorium (<https://www.lamayor.org/mayor-garcetti-orders-new-restrictions-evictions-announces-indefinite-moratorium-water-and-power>) on residential and commercial evictions and water and power shutoffs, and an economic relief package (<https://www.lamayor.org/mayor-garcetti-announces-economic-relief-package-small-businesses-impacted-novel-coronavirus>) for businesses impacted by the pandemic.

More details and answers to frequently asked questions can be found at coronavirus.lacity.org (<http://coronavirus.lacity.org/>).

Email*

Zip

GET UPDATES



(<https://twitter.com/ericgarcetti>) (<https://www.facebook.com/ericgarcetti>) (<https://www.instagram.com/ericgarcetti>) (<https://www.linkedin.com/company/cityoflosangeles>) (<https://www.youtube.com/channel/UC11pDm1y9920C7a1C6a1n>) (<https://www.messenger.com/profile/ericgarcetti>) (<https://www.reddit.com/user/ericgarcetti>)

Mayor Eric Garcetti

City of Los Angeles

📍 200 N. Spring St.,
Los Angeles, CA 90012

☎ +1-213-978-1028

✉ mayor.helpdesk@lacity.org

311 (<https://myla311.lacity.org/>)

City Data (<https://data.lacity.org>)

City Directory (<https://www.lacity.org/your-government/government-information/city-directory>)

Neighborhood Info (<http://neighborhoodinfo.lacity.org/>)

EXHIBIT I



Stores Which Sell Guns and Ammunition:

By order of the Sheriff of Los Angeles County, gun and ammunition stores are not considered essential businesses and must close to the general public, in compliance with the Executive Order-N-33-20 and County of Los Angeles Safer at Home Order for Control of COVID-19.

During the closure, they shall be permitted to sell ammunition to security guard companies. Also, I am making an exception for those who have already lawfully purchased a firearm, possess a valid California Firearms Safety certificate (CFS), and simply need to take possession of their firearm.

I conferred with the Los Angeles County Police Chiefs Association (LACPCA) and they support my decision to direct that action in the 42 contract cities and unincorporated Los Angeles County areas under the Sheriff's jurisdiction. I have deferred to the discretion of each individual chief of police as to their own jurisdictions.

Sheriff Alex Villanueva

EXHIBIT J



Federal Clarity Regarding Essential Businesses (Firearm Retailers)

The Los Angeles County Sheriff's Department commends the community and all businesses in their continued efforts to protect the health and safety of all of our residents. We will achieve our goals of ensuring the health and safety of the community when we come together as a community to accomplish our respective missions.

Based on the changing environment, the various governmental entities have issued ongoing directives. On March 19, 2020 the County Health Officer issued a "Safer at Home Directive" with the intent of curbing the spread of COVID-19 through social distancing and the closure of non-essential businesses and services.

On March 28, 2020, the United States Department of Homeland Security issued an Advisory Memorandum in regard to Essential Critical Infrastructure Workers during COVID-19 response. Although explicitly advisory in nature, nonetheless the federal memorandum is persuasive given its national scope. Included in the list of essential critical infrastructure workers are workers supporting the operation of firearm or ammunition product manufacturers, retailers, importers, distributors, and shooting ranges.

Based on this further input from the federal government, the Los Angeles County Sheriff's Department will not order or recommend closure of businesses that sell or repair firearms or sell ammunition; will investigate reports of improper health practices such as poor sanitation or failure to maintain social distancing at all businesses; and forward detailed reports of unlawful health conditions to the District Attorney for their review and consideration.

Regardless of whether a business sells groceries, gasoline, firearms, or any other product or service, we encourage them to abide by all health and safety measures in place.

Sheriff Alex Villanueva

EXHIBIT K



CITY MANAGER'S OFFICE

CITY OF CULVER CITY

(310) 253-6000

FAX (310) 253-6010

9770 CULVER BOULEVARD, CULVER CITY, CALIFORNIA 90232-0507

JOHN M. NACHBAR
CITY MANAGER

Third Supplement to Public Order Under City of Culver City Emergency Authority

Issue Date: April 1, 2020

Subject: City Measures to Address COVID-19 – Firearms Retailers

On March 14, 2020, I issued a Proclamation of Local Emergency in relation to the arrival of the COVID-19 virus in our community. Since that time, I have ordered a number of additional measures to be taken across the City to protect the public and City workers from an undue risk of contracting the COVID-19 virus. Our precautions over the past weeks and what we will do over the next few days and weeks will affect how well we weather this emergency.

On March 16, 2020, under the authority of Culver City Municipal Code (CCMC) Section 3.09.020, I, as the Director of Emergency Services, issued a Public Order enacting new City measures to protect members of the public and City workers from undue risk of COVID-19 (March 16 Order). The March 16 Order included, among other things, (1) a series of temporary restrictions on certain establishments throughout Culver City, in which large numbers of people tend to gather and remain in close proximity; and (2) a moratorium on residential evictions resulting from a tenant's inability to pay rent due to circumstances related to the COVID-19 pandemic.

Since that time, supplemental orders have been issued by the State of California and the Los Angeles County Department of Public Health on March 19, 2020, as well as a number of our neighboring communities, including the City of Los Angeles.

On March 20, 2020, under the authority of CCMC section 3.09.020, as the Director of Emergency Services, I issued a First Supplement to Public Order enacting further City measures to protect members of the public and City workers from undue risk of COVID-19 (March 20 Order). The March 20 Order was enacted after the City of Los Angeles and Los Angeles County Department of Public Health issued similar public orders. The March 20 Order issued, and incorporated by reference, any and all orders set forth in *Public Order Under City of Los Angeles Emergency Authority, Subject: SAFER AT HOME*, issued by Los Angeles Mayor Eric Garcetti on March 19, 2020.

Also March 19, 2020, the Governor issued Executive Order N-33-20, which, among other things, ordered all persons in the state of California to stay home at their place of residence "except as needed to maintain continuity of operations of the federal critical infrastructure sectors", as outlined by the U.S. Department of Homeland Security Cybersecurity & Infrastructure Security Agency (CISA). In accordance with Executive

Order N-33-20, the State Public Health Officer designated a list of “Essential Critical Infrastructure Workers” to help state, local, tribal, and industry partners as they work to protect communities, while ensuring continuity of functions critical to public health and safety, as well as economic and national security.

The Governor’s March 19 Executive Order N-33-20, both the Los Angeles County and City of Los Angeles Safer at Home orders, as well as the Public Health Officer’s “Essential Critical Infrastructure Workers” designation, were all silent as to the classification of firearms retailers.

On March 28, 2020, CISA issued an Advisory Memorandum on “Identification of Essential Critical Infrastructure Workers During COVID-19 Response” (Memorandum). The Memorandum was issued along with the March 28, 2020 “Guidance on the Essential Critical Infrastructure Workforce: Ensuring Community and National Resilience in COVID-19 response” (Guidance). The Guidance, under “Law Enforcement, Public Safety and other First Responders”, includes “workers supporting the operation of firearm or ammunition product manufacturers, retailers, importers, distributors, and shooting ranges” in the list of essential critical infrastructure workers.

Subsequent to the CISA Guidance, on March 30, 2020, Los Angeles County Sheriff Villanueva issued a statement entitled “Federal Clarity Regarding Essential Businesses (Firearms Retailers)”. In the statement, the Sheriff opined that while the CISA Guidance was advisory in nature, “nonetheless the federal memorandum is persuasive given the national scope...” Sheriff Villanueva continued, “based on this further input from the federal government, the Los Angeles County Sheriff’s Department will not order or recommend closure of businesses that sell or repair firearms or sell ammunition” and will report improper health practices such as poor sanitation or failure to maintain social distancing to the District Attorney.

By virtue of authority vested in me as the Director of Emergency Services pursuant to the provisions of Culver City Municipal Code Section 3.09.020.B.1.h(2), to make and issue rules and regulations on matters reasonably related to the protection of persons, property and the environment as affected by such emergency, I hereby declare the following orders to be necessary for the protection of life and property and I hereby order, effective at 11:59 p.m. tonight, April 1, 2020 until April 19, 2020 at 11:59 p.m., the following:

1. Consistent with the CISA Guidance and the County of Los Angeles’ current positions regarding the inclusion of firearms retailers as part of the essential critical infrastructure, my March 20 Order is hereby clarified to allow firearms retailers in Culver City to conduct business, including new sales and transfers, during the COVID-19 local emergency.
2. All firearms retailers that choose to conduct business shall comply with the strict social distancing, infection control and health and safety measures dictated by the County of Los Angeles Department of Public Health and my March 20 Order.

3. Additional social distancing, infection control and health and safety measures may be imposed at any time, in my sole discretion, in order to ensure the protection of life and property.

Any violation of the above prohibitions may be enforced under the Culver City Municipal Code, which provides for fines not to exceed \$1,000 or imprisonment not to exceed six months. Each individual officer should use their discretion in enforcing this order and always keep the intent of the order in mind.

This order may be extended prior to April 19, 2020.

Date: 4/1/2020



John M. Nachbar, City Manager
Director of Emergency Services
City of Culver City

EXHIBIT L



Public Order Under City of Los Angeles Emergency Authority

Issue Date: March 19, 2020 (Revised April 1, 2020)

Subject: SAFER AT HOME

The novel coronavirus pandemic is a global emergency that is unprecedented in modern history. Profoundly impacting our daily lives, it has inspired Angelenos to respond with courage, compassion, wisdom and resolve to overcome this crisis and help each other.

In a short period of time and at an unprecedented scale, residents in every community have embraced urgent social distancing best practices and aggressive hygienic precaution, not just to protect themselves, but to protect others. Angelenos understand with exceptional clarity that there is only one way to get through this difficult moment: together.

The City's recent emergency orders — curtailing large public gatherings; temporarily closing many government facilities; closing theaters, bars and entertainment venues; prohibiting restaurants from serving to dine-in customers while permitting take-out, delivery and drive-thru; and a ban on evictions of residential and commercial tenants who cannot pay rent due to financial impacts caused by COVID-19 — have been followed with a willing and generous spirit.

While we have previously taken strong action, now the City must adopt additional emergency measures to further limit the spread of COVID-19.

With this virus, we are safer at home.

Wherever feasible, City residents must isolate themselves in their residences, subject to certain exceptions provided below. This Order is given because, among other reasons, the COVID-19 virus can spread easily from person to person and it is physically causing property loss or damage due to its tendency to attach to surfaces for prolonged periods of time

Under the provisions of Section 231(i) of the Los Angeles City Charter and Chapter 3, Section 8.27 of the Los Angeles Administrative Code, I hereby declare the following orders to be necessary for the protection of life and property in the City of Los Angeles, effective on Thursday, March 19, 2020 at 11:59 PM:

1. Subject only to the exceptions outlined in this Paragraph and Paragraph 5 below, all persons living within the City of Los Angeles are hereby ordered to remain in their homes. Residents of the City of Los Angeles who are experiencing homelessness are exempt from this requirement. The City is working, along with partner government agencies and non-governmental organizations, to make more emergency shelters available for the unhoused residents of our City. City of Los Angeles officials and contracted partners responsible for homelessness outreach shall make every reasonable effort to persuade such residents to accept, if offered, temporary housing or shelter, as the Health Officer of the County of Los Angeles recommends that sheltering individuals will assist in reducing the spread of the virus and will protect the individual from potential exposure by allowing the individual access to sanitation tools. People at high risk of severe illness from COVID-19 and people who are sick are urged to stay in their residence to the extent possible except as necessary to seek medical care.

2. Subject only to the exceptions outlined in this Paragraph and Paragraph 5 below, all businesses within the City of Los Angeles are ordered to cease operations that require in-person attendance by workers at a workplace (including, without limitation, indoor malls and indoor shopping centers, including all stores except for those stores considered essential activities or infrastructure under this Order which are directly accessible to the public from the exterior of the mall or shopping center - the interior of the indoor mall or indoor shopping center shall remain closed to the public). To the extent that business operations may be maintained by telecommuting or other remote means, while allowing all individuals to maintain shelter in their residences, this Order shall not apply to limit such business activities. A business that fails to cease operation despite not meeting an exception in this Paragraph or Paragraph 5 may be subject to having its water and power services shut off by the Department of Water and Power for not being in compliance with the Order. The Deputy Mayor of Public Safety, or his written designee, may, after engagement with and a written warning issued to a noncompliant business, refer that business in writing to the Department of Water and Power to shut off water and power services pursuant to this order. Upon receiving such a written referral, the Department of Water & Power is authorized to shut off water and power services to the noncompliant business operating in violation of the Order

3. All public and private gatherings of any number of people occurring outside a residence are prohibited, except as to those exempted activities described in this Paragraph and Paragraph 5. This provision does not apply to gatherings within a single household or living unit.

4. All travel, including, without limitation, travel on foot, bicycle, scooter, motorcycle, automobile, or public transit is prohibited, subject to the exceptions in Paragraph 5.

5. Exceptions. People may lawfully leave their residence while this Order is in effect only to engage in the following activities:

~~(i) First 24 hour allowance. This Order shall not apply, for a 24-hour period following the effective date above, to allow employees and business owners to access to their workplaces to gather belongings or address other administrative needs, so long as social distancing requirements are followed. Such workplaces shall remain closed to the public in accordance with this Order.~~

(ii) Essential Activities. To engage in certain essential activities, including, without limitation, visiting a health or veterinary care professional, obtaining medical supplies or medication, obtaining grocery items (including, without limitation, canned food, dry goods, fresh fruits and vegetables, pet supplies, fresh or frozen meats, fish, and poultry, any other household consumer products and products necessary to maintain the safety and sanitation of residences and other buildings) for their household or to deliver to others, or for legally mandated government purposes. In addition, any travel related to (a) providing care for minors, the elderly, dependents, persons with disabilities, or other vulnerable persons; (b) returning to one's place of residence from outside the City; (c) travelling to one's place of residence located outside the City; (d) compliance with an order of law enforcement or court shall be exempt from this Order; or (e) legally mandated government purposes. Persons engaging in these essential activities are required to maintain reasonable social distancing practices. This includes maintaining a distance of at least six-feet away from others, frequently washing hands with soap and water for at least twenty seconds or using hand sanitizer, covering coughs or sneezes (into the sleeve or elbow, not hands), regularly cleaning high-touch surfaces, and not shaking hands.

(iii) Outdoor Activities. To engage in passive outdoor activity and recreation, provided that the individuals comply with social distancing requirements, including, without limitation, walking, running, cycling; use of scooters, roller skates, skateboards, or other personal mobility devices; or travel in a vehicle with household members to a location where it is possible to walk, run or ride a bike, horseback ride or operate personal mobility devices, while maintaining social distancing practices. Indoor and outdoor playgrounds for children, except those located within childcare centers, shall be closed for all purposes. The City of Los Angeles, following the recommendations and directives of the County Department of Public Health, shall cancel its recreational and cultural programming and close its beaches, park trails, trail heads, and park facilities. Parks shall remain open for passive recreational activities while practicing social distancing. "Recreation and cultural programming" refers to recreational and cultural activities, indoor and outdoor sports leagues, aquatics classes, instructional courses, and group sessions on City-owned and operated park land. "Park facilities," which shall be closed to the public, refers to the City's Department of Recreation and Parks facilities, including: skate parks, basketball courts, tennis courts, volleyball courts, baseball fields, Venice Boardwalk (except as necessary to travel to an essential business), Griffith Observatory, Travel Town, Griffith Park train rides and pony rides, the Cabrillo Marine Museum, Sherman Oaks Castle, EXPO Center, and aquatics facilities.

Census Centers located at Recreation and Parks facilities may remain open, provided strict adherence to social distancing practices.

(iv) Work in Support of Essential Activities. To perform work providing essential products and services or to otherwise carry out activities specifically permitted in this Order.

(v) To care for or support a friend, family member, or pet in another household.

(vi) Emergency Personnel. All first responders, gang and crisis intervention workers, public health workers, emergency management personnel, emergency dispatchers, law enforcement personnel, and related contractors and others working for emergency services providers are categorically exempt from this Order.

(vii) Essential Activities Exempt. Certain business operations and activities are exempt from the provisions of this Order, on the grounds that they provide services that are recognized to be critical to the health and well-being of the City. These include:

(a) All healthcare operations, including hospitals, clinics, dentists, pharmacies, pharmaceutical and biotechnology companies, medical and scientific research, laboratories, healthcare suppliers, home healthcare services providers, veterinary care providers, mental and behavioral health providers, substance use providers, physical therapists and chiropractors, cannabis dispensaries, or any related and/or ancillary healthcare services, manufacturers and suppliers. Healthcare operations does not include fitness and exercise gyms and similar facilities.

(b) Grocery stores, water retailers, farm and produce stands, supermarkets, convenience stores, warehouse stores, food banks, and other establishments engaged in the retail sale of canned food, dry goods, fresh fruits and vegetables, pet food and medication supply (but not grooming or training), fresh or frozen meats, fish, and poultry, any other household consumer products (such as construction supplies, cleaning and personal care products). This includes stores that sell groceries and sell other non-grocery products, and products necessary to maintaining the safety, sanitation, and essential operation of residences. Certified farmers markets may operate only if they are able to obtain written approval from the Bureau of Street Services (BSS) and only according to the guidelines set forth by BSS.

(c) Food cultivation, including farming, livestock, and fishing.

(d) Organizations and businesses that provide food, shelter, and social services, and other necessities of life for economically disadvantaged or otherwise needy individuals (including gang prevention and intervention, domestic violence, and homeless services agencies).

(e) Newspapers, television news, radio, magazine, podcast and journalism.

(f) Gas service stations, auto part supply, mobile auto repair operations, auto repair shops (including, without limitation, auto repair shops that operate adjacent to or otherwise in connection with an used or retail auto dealership), bicycle repair shops and related facilities. No auto dealership may operate, with the exception of its auto service and part stores. Fully automated or self-service car

washes are permitted to operate; car washes that require personnel are not permitted to operate.

(g) Banks, credit unions, financial institutions and insurance companies.

(h) Hardware and building supply stores, day labor centers, and nurseries.

(i) Plumbers, electricians, exterminators, custodial/janitorial workers, handyman services, funeral home workers and morticians, moving services, HVAC installers, carpenters, day laborers, landscapers, gardeners, property managers and leasing agents, private security personnel and other service providers who provide services to maintain the safety, sanitation, and essential operation to properties and other essential activities discussed in this subsection.

(j) Businesses providing mailing and shipping services, boxes and packaging, and post office boxes.

(k) Educational institutions -- including public and private K-12 schools, colleges, and universities -- for purposes of facilitating distance learning or performing essential functions provided that social distancing of six-feet per person is maintained.

(l) Laundromats, dry cleaners, and laundry service providers.

(m) Restaurants and retail food facilities that prepare and offer food to customers, but only via delivery service, to be picked up, or drive-thru. For those establishments offering food pick-up options, proprietors are directed to establish social distancing practices for those patrons in the queue for pick-up. This includes maintaining a distance of at least six-feet away from others. Schools and other entities that typically provide free food services to students or members of the public may continue to do so under this Order on the condition that the food is provided to students or members of the public on a pick-up and carry out basis only. Schools and other entities that provide food services under this exemption shall not permit the food to be eaten at the site where it is provided, or any other gathering site. Cafeterias, commissaries, and restaurants located within hospitals, nursing homes, or similar facilities are also exempt from this Order. Social distancing shall be maintained at a distance of at least six-feet away from others

(n) Businesses that supply or provide storage for products needed for people to work from home.

(o) Businesses that supply other essential businesses with the support, services, or supplies necessary to operate, provided that strict social distancing is maintained. This section includes, without limitation, utility companies.

(p) Individuals and businesses that ship or deliver groceries, food, beverages or goods directly to residences or businesses, including rail and trucking.

(q) Airlines, taxis, ride sharing services, car rental companies, and other private transportation services providing transportation services necessary for essential activities and other purposes expressly authorized in this Order.

(r) Home-based care for disabled persons, seniors, adults, or children.

(s) Residential facilities and shelters for homeless residents, disabled persons, seniors, adults, children and animals.

(t) Professional services, such as legal, leasing and real estate transactions, payroll or accounting services, when necessary to assist in compliance

with legally mandated activities. Open houses and in-person showings of housing for lease and sale are prohibited.

(u) Childcare facilities providing services that enable employees exempted in this Order to work as permitted. To the extent possible, childcare facilities must operate under the following mandatory conditions:

(1) Childcare must be carried out in stable groups of 12 or fewer (“stable” means that the same 12 or fewer children are in the same group each day).

(2) Children shall not change from one group to another.

(3) If more than one group of children is cared for at one facility, each group shall be in a separate room. Groups shall not mix with each other.

(4) Childcare providers shall remain solely with one group of children.

(v) Hotels, motels, shared rental units and similar facilities.

(w) Military/Defense Contractors/FFRDC (Federally Funded Research and Development Centers). For purposes of this Order, essential personnel may leave their residence to provide any service or perform any work deemed essential for national security including, without limitation, defense, intelligence, and aerospace development and manufacturing for the Department of Defense, the Intelligence Community, and NASA and other federal government, and or United States Government departments and agencies. Essential personnel include prime, sub-prime, and supplier contractor employees, at both the prime contract level and any supplier level at any tier, working on federal United States Government contracts, such as contracts for national intelligence and national security requirements.

(viii) Government Employees. This Order does not apply to employees of government agencies working within the course and scope of their public service employment. Employees of the City of Los Angeles shall follow any current or future directives issued by the Mayor.

(ix) Essential Infrastructure. Individuals may leave their residences to provide any services or goods or perform any work necessary to to build, operate, maintain or manufacture essential infrastructure, including without limitation construction of commercial, office and institutional buildings, residential buildings and housing; airport operations, food supply, concessions, and construction; port operations and construction; water, sewer, gas, electrical, oil extraction and refining; roads and highways, public transportation and rail; solid waste collection, removal, and recycling; flood control and watershed protection; internet and telecommunications systems (including the provision of essential global, national, and local infrastructure for computing services, business infrastructure, communications, phone retail sales and servicing, and web-based services); and manufacturing and distribution companies deemed essential to the supply chains of the industries referenced in this Paragraph, provided that they carry out those services and that work in compliance with social distancing practices as prescribed by the Centers for Disease Control and Prevention and the Los Angeles County Department of Public Health, to the extent possible.

6. To the extent that this Order is in conflict with earlier Orders, this Order shall supersede the others.

7. Failure to comply with this Order shall constitute a misdemeanor subject to fines and imprisonment. I hereby urge the Los Angeles Police Department and the City Attorney to vigorously enforce this Order via Sections 8.77 and 8.78 of the Los Angeles Administrative Code.

8. If any subsection, sentence, clause, phrase, or word of this Order or any application of it to any person, structure, or circumstance is held to be invalid or unconstitutional by a decision of a court of competent jurisdiction, then such decision shall not affect the validity of the remaining portions or applications of this Order.

This order shall be in place until April 19, 2020, and it may be extended prior to that time.

EXHIBIT M

home (/home) / lapd equipment (/lapd_equipment)

LAPD Equipment



(/lapd_equipment/pdf_view/52801)
Ford Black & White Vehicle with Red & Blue Light bar



(/lapd_equipment/pdf_view/49353)
Ford Black & White Vehicle (Slicktop)



(/lapd_equipment/pdf_view/52800)
Dodge Charger



(/lapd_equipment/pdf_view/49354)
LAPD BMW Motorcycle



(../..../lapd_equipment/pdf_view/49110)



(/lapd_equipment/pdf_view/49357)
Handcuffs



(/lapd_equipment/pdf_view/49611)
Flex Cuffs



(/lapd_equipment/pdf_view/49367)
Ballistic Helmet



(/lapd_equipment/pdf_view/49358)
Taser X26



(/lapd_equipment/pdf_view/49351)
Female Tactical Vest



Tactical Vest



(/lapd_equipment/pdf_view/49366)

Air Gas Mask



(/lapd_equipment/pdf_view/49368)

Motorola Radio

(/lapd_equipment/pdf_view/49308)



Pelican Flashlight

HANDGUNS



(../..../lapd_equipment/pdf_view/49176)

Beretta 92FS, 9mm



(../..../lapd_equipment/pdf_view/49177)

Beretta 92F, 9mm



(../../../../lapd_equipment/pdf_view/49178)

Beretta 845F, .45 caliber



(../../../../lapd_equipment/pdf_view/49159)

Glock 17, 9mm



(../../../../lapd_equipment/pdf_view/49163)

Glock 19, 9mm



(../../../../lapd_equipment/pdf_view/49154)

Glock 21 .45 caliber



(../../../../lapd_equipment/pdf_view/49155)

Glock 22 .40 caliber



(../../../../lapd_equipment/pdf_view/49162)

Glock 23, .40 caliber



(../../../../lapd_equipment/pdf_view/49172)

Glock 26, 9mm



(../../../../lapd_equipment/pdf_view/49173)

Glock 27, .40 caliber



(../../../../lapd_equipment/pdf_view/49164)

Glock 30, .45 caliber



(../../../../lapd_equipment/pdf_view/49174)

Glock 36, .45 caliber



Smith & Wesson, model 4506
.45 caliber

(../../../../lapd_equipment/pdf_view/49179)

Smith & Wesson, model 4566
.45 caliber



(../../../../lapd_equipment/pdf_view/49180)

Smith & Wesson, model 4516
.45 caliber



(/lapd_equipment/pdf_view/49190)

Smith & Wesson, model 3914
9mm



(/lapd_equipment/pdf_view/49191)

Smith & Wesson, model 3913
9mm



(/lapd_equipment/pdf_view/49192)

Smith & Wesson, model 457
.45 caliber



Smith & Wesson, model CS9
9mm



[\(/lapd_equipment/pdf_view/49193\)](#)

Smith & Wesson, model 6904
9mm



[\(/lapd_equipment/pdf_view/49194\)](#)

Smith & Wesson, model 5906
9mm



[\(/lapd_equipment/pdf_view/49195\)](#)

Smith & Wesson, model 6906
9mm

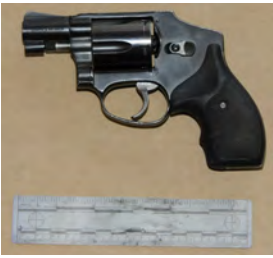


[\(/lapd_equipment/pdf_view/49198\)](#)

Smith & Wesson, model 649
.38 caliber

[\(/lapd_equipment/pdf_view/49199\)](#)

Smith & Wesson, model 442
.38 caliber



Smith & Wesson, model 14
.38 caliber



(/lapd_equipment/pdf_view/49200)

Smith & Wesson, model 67
.38 caliber



Smith & Wesson, Bodyguard
.380 caliber



(/lapd_equipment/pdf_view/49205)

Kimber Custom 2
.45 caliber



(/lapd_equipment/pdf_view/49206)

Kimber Classic
.45 caliber

SHOTGUNS/ RIFLES



(/lapd_equipment/pdf_view/49166)

Benelli M4 Shotgun



(/lapd_equipment/pdf_view/49145)

Remington 870 Shotgun



Heckler & Koch, 416D
caliber 5.56 mm



(/lapd_equipment/pdf_view/49146) Smith & Wesson M&P
15T Rifle



(/lapd_equipment/pdf_view/49147)
Colt 6920 Rifle



Colt 6940 Rifle



(/lapd_equipment/pdf_view/49149)
Bushmaster BCW A3F-16D Rifle



(/lapd_equipment/pdf_view/49150)
Bushmaster BCW A3F- 16M4



Bushmaster BCW A3F-16



(/lapd_equipment/pdf_view/49250)

Pepper Ball Launcher



(/lapd_equipment/pdf_view/49251)
37 mm



(/lapd_equipment/pdf_view/49253)

40 mm



(/lapd_equipment/pdf_view/49255)

Beanbag



(/lapd_equipment/pdf_view/49256)

30 & 40 Round Rifle Magazines

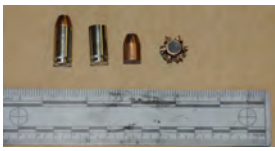


(/lapd_equipment/pdf_view/49289)

.45 caliber ammunition

(/lapd_equipment/pdf_view/49290)

75
.40 caliber ammunition



(/lapd_equipment/pdf_view/49291)
9mm ammunition



(/lapd_equipment/pdf_view/49293)
OO Buck Shotgun Pellets



(/lapd_equipment/pdf_view/49292)
.38 caliber ammunition



(/lapd_equipment/pdf_view/49294)
Winchester 1oz Slugs



(/lapd_equipment/pdf_view/49298)
Beanbag Shotgun 2588 Sock



(/lapd_equipment/pdf_view/49299)
5.56 Rifle ammunition





(/lapd_equipment/pdf_view/49301)
380 ammunition



(/lapd_equipment/pdf_view/49302)

MK046, MK-IX OC's



(/lapd_equipment/pdf_view/49257)
Foam Baton 37mm Black Powder



(/lapd_equipment/pdf_view/49259)

Foam Baton 37 mm Black Powder



(/lapd_equipment/pdf_view/49243)

O.C. MK 3



(/lapd_equipment/pdf_view/49245)

519 CS Handtoss Grenade



(/lapd_equipment/pdf_view/49246)

White Smoke-110 HC



(/lapd_equipment/pdf_view/49262)

40 mm Ferret OC Barricade Penetrating Projectile Liquid



(/lapd_equipment/pdf_view/49264)

No.14 CS 37/38 mm Liquid Agent-Barricade Projectile Round



(/lapd_equipment/pdf_view/49265)

No.27B (Stinger) 37&38 mm caliber



(/lapd_equipment/pdf_view/49266)

1006 Exact Impact 40mm



(/lapd_equipment/pdf_view/49268)

S&W 37mm Short Range-Muzzle Dispersion Riot Agent

MOUNTED UNIT



(/lapd_equipment/pdf_view/49269)



(/lapd_equipment/pdf_view/49270)
Sunlite Stampede S1
(4 Horse Trailer)



(/lapd_equipment/pdf_view/49271)

Western Stock Saddle



(/lapd_equipment/pdf_view/49275)

Broken Horn Saddle Pad



(/lapd_equipment/pdf_view/49272)

Leg Guards (Combo Boots)



(/lapd_equipment/pdf_view/49273)

Horse Face Shield & Nose Guard



(/lapd_equipment/pdf_view/49276)

Horse Bridles



(/lapd_equipment/pdf_view/49274)

Spurs



(/lapd_equipment/pdf_view/49612)

Hat



(/lapd_equipment/pdf_view/49279) 36" Baton, (Riot Stick)



Bokken, 40 " Baton

AIR SUPPORT



(/lapd_equipment/pdf_view/49516)



(/lapd_equipment/pdf_view/49517) AStar B-2, Black & White Helicopter



(/lapd_equipment/pdf_view/49518) AStar B-2 Helicopter



(/lapd_equipment/pdf_view/49520) AStar B-2, Interior Cabin



(/lapd_equipment/pdf_view/49522) Bell Jet 206 B3, Black & White Helicopter



Bell Jet 206 B3



Fix Wing Airplane



(/lapd_equipment/pdf_view/49524) Pilot Helmet and Binoculars

ASD Nomex Uniform



(../../lapd_equipment/pdf_view/49578)



(../../lapd_equipment/pdf_view/49576)

Offroad Enforcement Unit



(/lapd_equipment/pdf_view/49581)



(/lapd_equipment/pdf_view/49582)

(/lapd_equipment/pdf_view/49586)

Kawasaki KLX400



(/lapd_equipment/pdf_view/49580)



(/lapd_equipment/pdf_view/49600)

(/lapd_equipment/pdf_view/49601)



Oneal motorcross helmet



(/lapd_equipment/pdf_view/49602)



(/lapd_equipment/pdf_view/49603)

Thor motorcross gloves



(/lapd_equipment/pdf_view/49604)

Oneal motorcross boots



Thor motorcross uniform



(/lapd_equipment/pdf_view/49606)



(/lapd_equipment/pdf_view/49607)

K9



(/lapd_equipment/pdf_view/50115)
Bite Uniform



(/lapd_equipment/pdf_view/50116)
Pole Camera



(/lapd_equipment/pdf_view/50117)
Pole Camera & Inferred Equipment



(/lapd_equipment/pdf_view/50118)

Tactical Laser



(/lapd_equipment/pdf_view/50119)

MK 46 Oleoresin Capsicum OC



(/lapd_equipment/pdf_view/50120)

Punch II M-5-G



(/lapd_equipment/pdf_view/50122)

Heckler & Koch 416
.223 cal



(/lapd_equipment/pdf_view/50123)

Benelli M4 12 Gauge Shotgun



(/lapd_equipment/pdf_view/50124)

Tactical Vest & Tactical Helmet



(/lapd_equipment/pdf_view/50128)

K9 Black & White Patrol Vehicle

Metro/ SWAT



(/lapd_equipment/pdf_view/50188)

37mm ferrett OC

(/lapd_equipment/pdf_view/50215)



Sponge 40MM Exact Impact Round



(/lapd_equipment/pdf_view/50189)

40mm Pump



(/lapd_equipment/pdf_view/50190)

Baton 36



(/lapd_equipment/pdf_view/50212)

Bokken



Bear Rescue



(/lapd_equipment/pdf_view/50193)

Rescue 2



(/lapd_equipment/pdf_view/50194)

Rescue 3



(/lapd_equipment/pdf_view/50195)

SWAT Truck



(/lapd_equipment/pdf_view/50196)

SWAT Pistol Kimber 1911



(/lapd_equipment/pdf_view/50197)

Extended Range XREP



(/lapd_equipment/pdf_view/50198)
Less Lethal XREP



(/lapd_equipment/pdf_view/50199)
Rifle AR-10



(/lapd_equipment/pdf_view/50201)
Barrett m82



(/lapd_equipment/pdf_view/50202)
Rifle Car 9mm



(/lapd_equipment/pdf_view/50203)
Rifle HK416-14



(/lapd_equipment/pdf_view/50204)
Rifle M4



(/lapd_equipment/pdf_view/50205)
Rifle Remington 700



(/lapd_equipment/pdf_view/50206)
Rifle Springfield Armory M1A



(/lapd_equipment/pdf_view/50207)
Combat Assault Rifle (SCAR)



(/lapd_equipment/pdf_view/50208)

Sage 37mm Gas Gun



(/lapd_equipment/pdf_view/50233)

Sage Impact L3AOS



(/lapd_equipment/pdf_view/50216)

Submachine MP5



(/lapd_equipment/pdf_view/50211)

Shockwave



(/lapd_equipment/pdf_view/50213) Shotgun Benelli M42



(/lapd_equipment/pdf_view/50214) Shotgun Remington 870



(/lapd_equipment/pdf_view/51465)

Moose Boats "F.E. Cuesta"



(/lapd_equipment/pdf_view/51491)



(../..../lapd_equipment/pdf_view/51489)



(../..../lapd_equipment/pdf_view/51492)



(/lapd_equipment/pdf_view/51493)

BOAT 2



(/lapd_equipment/pdf_view/51515)



(/lapd_equipment/pdf_view/51490)



(../..../lapd_equipment/pdf_view/51516)



(/lapd_equipment/pdf_view/51467)

O'Neill Wetsuit



[\(/lapd_equipment/pdf_view/51498\)](/lapd_equipment/pdf_view/51498)

Hazmat Rated Dry Suit



[\(/lapd_equipment/pdf_view/51475\)](/lapd_equipment/pdf_view/51475)

Dive Fins



[\(/lapd_equipment/pdf_view/51475\)](/lapd_equipment/pdf_view/51475)

Bearskin Dive Booties



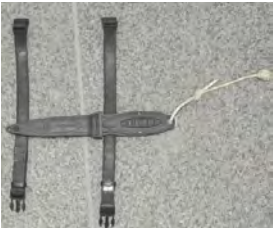
[\(/lapd_equipment/pdf_view/51473\)](/lapd_equipment/pdf_view/51473)

Bearskin Gloves

[\(/lapd_equipment/pdf_view/51478\)](/lapd_equipment/pdf_view/51478)



O'Neill Hoodie



(/lapd_equipment/pdf_view/51472)

Knife Holster



(/lapd_equipment/pdf_view/51476)

Breathing Mask with Communications System



(/lapd_equipment/pdf_view/51471)

Dive Rig



[\(/lapd_equipment/pdf_view/51474\)](#)

Dive Rig and Breathing Tank



[\(/lapd_equipment/pdf_view/51477\)](#)

Regulator and Dive Computer



[\(/lapd_equipment/pdf_view/51480\)](#)

Underwater Flashlight



[\(/lapd_equipment/pdf_view/51481\)](#)

Compass Board



(/lapd_equipment/pdf_view/51479)

Surface Marker Buoy and Reel



(/lapd_equipment/pdf_view/51482)

Safety Diver Tenderline & Buoy



(/lapd_equipment/pdf_view/51469) Weight Belt



(/lapd_equipment/pdf_view/51483)

Emergency Oxygen Kit



(/lapd_equipment/pdf_view/51485)

Diver Recall System



Air Control System



(/lapd_equipment/pdf_view/51486)

Surface to Diver Communications Set



(/lapd_equipment/pdf_view/51487)

Miscellaneous Cutting Tools



(/lapd_equipment/pdf_view/51488)

Repair Kit Box "Go Box"



(/lapd_equipment/pdf_view/51496)

Underwater Sonar Unit



(/lapd_equipment/pdf_view/51499)

Underwater Metal Detector

BOMB SQUAD UNIT



BAT
Bomb Assessment Truck



TCV
Total Containment Vessel





BAT CAT
(Bomb Assessment Tactical Counter Assault Tool)



Talon Robot



Andros F6B Robot



Contact Us

LAPD Contacts (/contact_us)

Emergency: 911

Non-Emergency: 877-ASK-LAPD

100 West 1st Street

Los Angeles, CA 90012

[File a Commendation or Complaint \(/our_communities/content_basic_view/9217\)](#)

Stay Connected



(htt

p://

ww

w.fa

ceb

ook.

com

/the

lapd

? witt

sk=i

nfo) om/)



(htt

p://i

nsta

gra

m.c

om/l

apd

hq)



(htt

p://t

witt

er.c

om/)

4/27/2020 7:51:25AM

Translate this page:

Select Language ▼

Get Involved

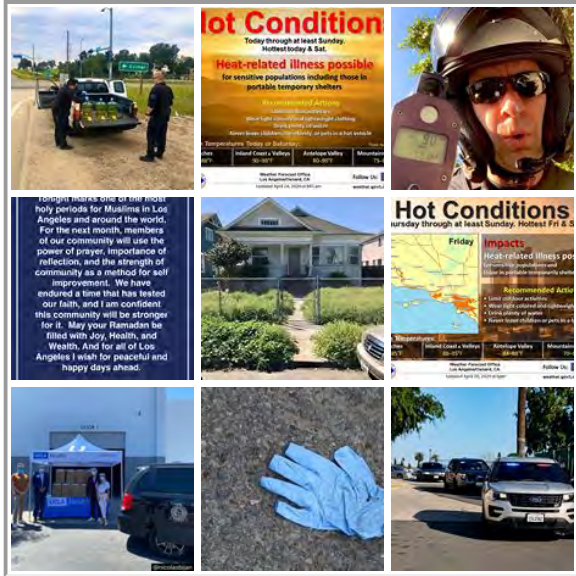
- [iWatch \(/iwatchla\)](#)
- [Joint Regional Intelligence Center \(http://jric.org/default.aspx?AspxAutoDetectCookieSupport=1\)](http://jric.org/default.aspx?AspxAutoDetectCookieSupport=1)
- [LA Regional Crime Stoppers \(/la_regional_crime_stoppers\)](#)
- [LA Metro Task Force On Human Trafficking \(800-655-4096\)](#)
- [Volunteer \(/our_communities/content_basic_view/733\)](#)

- Reward Bulletin (/reward_bulletin_listing)
- DHS.gov/alerts (<http://DHS.gov/alerts>)

Download on the **App Store** (<https://itunes.apple.com/us/app/lapd/id952681677?ls=1&mt=8>)

GET IT ON **Google play** (<https://play.google.com/store/apps/details?id=com.lapd>)

Our Galleries



Design By SPINX Digital (<https://www.spinxdigital.com/>)

Copyright © 2020 Los Angeles Police Foundation (<http://lapolicefoundation.org/>) and the LAPD (/). All Rights Reserved

EXHIBIT N

**XAVIER BECERRA***Attorney General*

Handguns Certified for Sale

As of January 1, 2001, no handgun may be manufactured within California, imported into California for sale, lent, given, kept for sale, or offered/exposed for sale unless that handgun model has passed firing, safety, and drop tests and is certified for sale in California by the Department of Justice. Private party transfers, curio/relic handguns, certain single-action revolvers, and pawn/consignment returns are exempt from this requirement.

Additional information on the Roster of Certified Handguns can be found at California Code of Regulations, title 11, section 4070.

IMPORTANT INFORMATION:

- All handguns listed are approved with or without night sights.
- Aftermarket changes or modifications made to certain single shot pistols (i.e. changing upper receivers, connecting gas tubes) may be considered manufacturing these pistols into assault weapons. See California Penal Code section 30515, subdivision (a)(1), for a list of assault weapon characteristics. The purchaser could be in violation of Penal Code section 30600, prohibiting the manufacture of assault weapons, and Penal Code section 30605(a), prohibiting the possession of unregistered assault weapons.
- Alterations of a single shot pistol (i.e. changing upper receivers, connecting gas tubes) may also be considered manufacturing an unsafe handgun. See California Penal Code sections 31900-31910 for the definition of unsafe handguns and 32000(a) for more information on illegal acts involving unsafe handguns.

814 handguns found

Search:

for Manufacturer, Model, Gun Type, Barrel Length

Manufacturer:

- Any -

Manufacturer	Model	Gun Type	Barrel Length	Caliber	Expired Date
Accu-Tek	AT-380 II / 17-4 Stainless Steel	Pistol	2.8"	.380 ACP	01/01/21
Armscor Precision	AP9 FS / Steel	Pistol	4.5"	9mm	01/01/21
Armscor Precision	AP9 MS / Steel	Pistol	3.8"	9mm	01/01/21
Armscor Precision	Citadel M1911-A1 FS / Steel	Pistol	5"	.45 ACP	01/01/21
Armscor Precision	ECS (Stainless 2) / Stainless Steel	Pistol	3.5"	.45 ACP	01/01/21
Armscor Precision	ECS (Stainless) / Stainless Steel	Pistol	3.5"	.45 ACP	01/01/21
Armscor Precision	EFS (Blue) / Steel	Pistol	5"	.45 ACP	01/01/21
Armscor Precision	EFS (Cerakote Gun Metal Gray) / Steel	Pistol	5"	.45 ACP	01/01/21
Armscor Precision	EFS (Stainless) / Stainless Steel	Pistol	5"	.45 ACP	01/01/21
Armscor Precision	EFS M1911 AL-FS / Stainless Steel	Pistol	5"	.45 ACP	01/01/21
Armscor Precision	FSR 38 / Steel	Revolver	2"	.38 Spl	01/01/21

Manufacturer	Model	Gun Type	Barrel Length	Caliber	Expired Date
Armstrong Precision	High Standard 1911 A-1 / Steel	Pistol	5"	.45 ACP	01/01/21
Armstrong Precision	M1911 AL-FS High Standard FS Matte Nickel / Steel	Pistol	5"	.45 ACP	01/01/21
Armstrong Precision	M1911-A1 (Blue) / Steel	Pistol	5"	.45 ACP	01/01/21
Armstrong Precision	M206 (Blue) / Steel	Revolver	2 1/8"	.38 Spl	01/01/21
Armstrong Precision	M206 Revolver / Steel	Revolver	3"	.38 Spl	01/01/21
Armstrong Precision	MAPP1 MS / Steel, Polymer	Pistol	3.8"	9mm	01/01/21
Armstrong Precision	RIA 1911 (Nickel) / Steel	Pistol	5.16"	.38 Super	01/01/21
Armstrong Precision	RIA 1911 (Parkerized) / Steel	Pistol	5.16"	.38 Super	01/01/21
Armstrong Precision	RIA M1911-A1 FS Match (Blue) / Steel	Pistol	5"	.45 ACP	01/01/21

Showing 1 to 20 of 814 entries

Previous 1 2 3 4 5 ... 41 Next

View list of handgun models whose status has changed recently:


- Recently Added Handgun Models

Models added recently to the Roster of Handguns certified for sale.

- Recently Removed Handgun Models

Handgun models whose certification has expired or otherwise removed from the Roster. These models may no longer be sold, offered for sale, or manufactured in California.

EXHIBIT O

<p>California Department of Justice DIVISION OF LAW ENFORCEMENT Kevin Gardner, Chief</p> 	<p>INFORMATION BULLETIN</p>	
<p><i>Subject:</i></p> <p>Evidence and Crime Guns Automated Firearms System</p>	<p><i>No.</i></p> <p>2018-BOF-03</p>	<p><i>Contact for information:</i></p> <p>Bureau of Firearms (916) 227-7527</p>
	<p><i>Date:</i></p> <p>August 23, 2018</p>	

**TO: All Chiefs of Police and Sheriffs
All Agency CLETS Coordinators**

The purpose of this Information Bulletin is to remind all California law enforcement agencies of the requirement to report the recovery of a firearm by entering an Evidence and Crime Gun record into the California Department of Justice's (Department) Automated Firearms System (AFS). The required submission of Evidence and Crime Gun data provides agencies with important historical firearm information from the Department and firearm trace summaries from the National Tracing Center of the Federal Bureau of Alcohol, Tobacco, Firearms, and Explosives (ATF).

Pursuant to California Penal Code section 11108.3, local law enforcement agencies shall, and any other law enforcement agency may, report to the Department the recovery of firearms that are illegally possessed, have been used in a crime, or are suspected of having been used in a crime. This information is electronically forwarded to the National Tracing Center to aid in the identification and tracing of these firearms. Firearm tracing is the systemic tracking of the movement of a firearm recovered by law enforcement officials from its first sale by the manufacturer or importer through the distribution chain (wholesaler/retailer) to the first retail purchaser. As Crime Gun data is electronically forwarded to the National Tracing Center on a daily basis, the entering agency will receive a Firearms Trace Summary from the ATF via mail or via the agency's eTrace account if the agency has an active eTrace account with the ATF. This report contains investigative results of all tracing information located by the ATF on each Crime Gun record submitted. The requirement to enter Evidence and Crime Gun data into the AFS became effective on January 1, 2002.

If the recovered firearm does not meet the definition of a Crime Gun as defined in California Penal Code section 11108.3, or if the agency is unable to determine whether or not the firearm was used in a crime, is suspected of being used in a crime, or was illegally possessed, the agency shall enter an Evidence or Safekeeping record, as appropriate, to indicate that the agency has custody of the firearm.

If you have any questions regarding this Information Bulletin, please contact the Department of Justice, Bureau of Firearms, at (916) 227-7527.

Sincerely,



KEVIN GARDNER
Chief, Division of Law Enforcement

For XAVIER BECERRA
Attorney General

EXHIBIT P

**XAVIER BECERRA***Attorney General*

Automated Firearms System Personal Information Update

[Home](#) / [Firearms](#) / [Automated Firearms System Personal Information Update](#)

The Automated Firearms System is a repository of firearm records maintained by the Department, as established by Penal Code section 11106. The Automated Firearms System is populated by way of firearm purchases or transfers at a California licensed firearm dealer, registration of assault weapons (during specified registration periods), an individual's report of firearm ownership to the Department, Carry Concealed Weapons Permit records, or records entered by law enforcement agencies.

Commencing July 1, 2019, an individual will have the ability to electronically update one or more Automated Firearms System records through the California Firearms Application Reporting System (CFARS) to match his or her current name, date of birth, address, and California Driver License, California Identification Card, or Military Identification Number.

Maintaining accurate personal information within the Automated Firearm System is critical if you plan to purchase ammunition by meeting the eligibility requirements established by Penal Code section 30370, subdivisions (c) and (d). If the information that is provided to the ammunition vendor does not match an entry in the Automated Firearms System database, the transaction must be denied. As such, it is important to ensure records are accurate.

How do I update my Automated Firearm System record?

To update your personal information on a record in the Automated Firearms System, log into your CFARS account, click on “Automated Firearms System (AFS) Personal Information Update,” and follow the instructions. If you do not have a CFARS account, you may create one by visiting <https://cfars.doj.ca.gov>.

What information is needed to update an Automated Firearm System record?

- **Current personal information.** Full Name, Date of Birth, Residential Address, California Driver License/Identification Card Number, or Military Identification Number/Department of Defense Identification Number.
- **Personal information at time of firearm purchase.** Exact personal information as it was recorded on your Dealer Record of Sale or other firearms ownership record.
- **Firearm currently recorded in your name.** Type, Make, Model, Caliber and Serial Number information of one or more firearms currently recorded in the Automated Firearms System.
- **Verifying documentation.** If you are changing your name, date of birth, identification type or identification number, you must upload documents verifying the change. These documents require review and approval by the Department before changes can be updated on your record. Depending on what personal information will be updated, the following verification documents may be required:
 - California Driver License/Identification Card
Note: If you uploaded your military identification and active duty station orders and do not have a California driver license or identification card, you may upload your military identification card again.
 - Marriage License
 - Endorsed court order regarding restoration of former name
 - Endorsed court order regarding name change

- Birth Certificate
- Military Orders

Please refer to the Automated Firearms System Information Update Regulations for more information.

Is there a fee associated with updating an Automated Firearm System record?

There is no fee for updating your record.

What can I expect after submission of the Automated Firearms System Personal Information Update request?

Once your submission has been processed, the Department will send an email to the email address on file to let you know the status of your submission or to advise you to log on to CFARS to review notices from the Department.

What if I don't know the exact personal information or firearms information that was used when I purchased or transferred my firearm?

You can request to obtain information on all firearms for which you are listed as the purchaser, transferee, or owner in the State of California. Based on the personal information you provide, the Department will conduct a diligent search of the Automated Firearms System and will provide you with the listing via mail. Once you receive the listing, you can reference the personal and firearm information that was recorded at the time the firearm was purchased or transferred. Thereafter, you can use the information to update your Automated Firearm System record. The Automated Firearms System Request for Firearm Records (BOF 053) application can be located at <https://oag.ca.gov/firearms/forms>.

I know I have an Automated Firearms System record but I am not sure if my personal information is current. May I submit a new Firearm Ownership Report instead of updating my Automated Firearm System record?

No. The Department will not process firearm ownership reports for firearms that are already recorded in your name.

What if I don't have a firearm record in the Automated Firearm System and I want to purchase ammunition?

For more information about how you can meet the requirements to purchase ammunition without having an Automated Firearms System record, please visit the Ammunition Purchase Authorization webpage.

EXHIBIT Q



ERIC GARCETTI
MAYOR

Public Order Under City of Los Angeles Emergency Authority

Issue Date: March 19, 2020 (Revised April 10, 2020)

Subject: SAFER AT HOME

The novel coronavirus pandemic is a global emergency that is unprecedented in modern history. Profoundly impacting our daily lives, it has inspired Angelenos to respond with courage, compassion, wisdom and resolve to overcome this crisis and help each other.

In a short period of time and at an unprecedented scale, residents in every community have embraced urgent social distancing best practices and aggressive hygienic precaution, not just to protect themselves, but to protect others. Angelenos understand with exceptional clarity that there is only one way to get through this difficult moment: together.

The City's recent emergency orders — curtailing large public gatherings; temporarily closing many government facilities; closing theaters, bars and entertainment venues; prohibiting restaurants from serving to dine-in customers while permitting take-out, delivery and drive-thru; and a ban on evictions of residential and commercial tenants who cannot pay rent due to financial impacts caused by COVID-19 — have been followed with a willing and generous spirit.

While we have previously taken strong action, now the City must adopt additional emergency measures to further limit the spread of COVID-19.

With this virus, we are safer at home.

Wherever feasible, City residents must isolate themselves in their residences, subject to certain exceptions provided below. This Order is given because, among other reasons, the COVID-19 virus can spread easily from person to person and it is physically causing property loss or damage due to its tendency to attach to surfaces for prolonged periods of time

Under the provisions of Section 231(i) of the Los Angeles City Charter and Chapter 3, Section 8.27 of the Los Angeles Administrative Code, I hereby declare the following orders to be necessary for the protection of life and property in the City of Los Angeles, effective on Friday, April, 10, 2020 at 11:59 PM:

1. Subject only to the exceptions outlined in this Paragraph and Paragraph 5 below, all persons living within the City of Los Angeles are hereby ordered to remain in their homes. Residents of the City of Los Angeles who are experiencing homelessness are exempt from this requirement. The City is working, along with partner government agencies and non-governmental organizations, to make more emergency shelters available for the unhoused residents of our City. City of Los Angeles officials and contracted partners responsible for homelessness outreach shall make every reasonable effort to persuade such residents to accept, if offered, temporary housing or shelter, as the Health Officer of the County of Los Angeles recommends that sheltering individuals will assist in reducing the spread of the virus and will protect the individual from potential exposure by allowing the individual access to sanitation tools. People at high risk of severe illness from COVID-19 and people who are sick are urged to stay in their residence to the extent possible except as necessary to seek medical care.

2. Subject only to the exceptions outlined in this Paragraph and Paragraph 5 below, all businesses within the City of Los Angeles are ordered to cease operations that require in-person attendance by workers at a workplace (including, without limitation, indoor malls and indoor shopping centers, including all stores except for those stores considered essential activities or infrastructure under this Order which are directly accessible to the public from the exterior of the mall or shopping center - the interior of the indoor mall or indoor shopping center shall remain closed to the public). To the extent that business operations may be maintained by telecommuting or other remote means, while allowing all individuals to maintain shelter in their residences, this Order shall not apply to limit such business activities. A business that fails to cease operation despite not meeting an exception in this Paragraph or Paragraph 5 may be subject to having its water and power services shut off by the Department of Water and Power for not being in compliance with the Order. The Deputy Mayor of Public Safety, or his written designee, may, after engagement with and a written warning issued to a noncompliant business, refer that business in writing to the Department of Water and Power to shut off water and power services pursuant to this order. Upon receiving such a written referral, the Department of Water & Power is authorized to shut off water and power services to the noncompliant business operating in violation of the Order

3. All public and private gatherings of any number of people occurring outside a residence are prohibited, except as to those exempted activities described in this Paragraph and Paragraph 5. This provision does not apply to gatherings within a single household or living unit.

4. All travel, including, without limitation, travel on foot, bicycle, scooter, motorcycle, automobile, or public transit is prohibited, subject to the exceptions in Paragraph 5.

5. Exceptions. People may lawfully leave their residence while this Order is in effect only to engage in the following activities:

~~(i) First 24 hour allowance. This Order shall not apply, for a 24-hour period following the effective date above, to allow employees and business owners to access to their workplaces to gather belongings or address other administrative needs, so long as social distancing requirements are followed. Such workplaces shall remain closed to the public in accordance with this Order.~~

(ii) Essential Activities. To engage in certain essential activities, including, without limitation, visiting a health or veterinary care professional, obtaining medical supplies or medication, obtaining grocery items (including, without limitation, canned food, dry goods, fresh fruits and vegetables, pet supplies, fresh or frozen meats, fish, and poultry, any other household consumer products and products necessary to maintain the safety and sanitation of residences and other buildings) for their household or to deliver to others, or for legally mandated government purposes. In addition, any travel related to (a) providing care for minors, the elderly, dependents, persons with disabilities, or other vulnerable persons; (b) returning to one's place of residence from outside the City; (c) travelling to one's place of residence located outside the City; (d) compliance with an order of law enforcement or court shall be exempt from this Order; or (e) legally mandated government purposes. Persons engaging in these essential activities are required to maintain reasonable social distancing practices. This includes maintaining a distance of at least six-feet away from others, frequently washing hands with soap and water for at least twenty seconds or using hand sanitizer, covering coughs or sneezes (into the sleeve or elbow, not hands), regularly cleaning high-touch surfaces, and not shaking hands.

(iii) Outdoor Activities. Travel for purposes of or to engage in passive outdoor activity and recreation, provided that the individuals comply with social distancing requirements, including, without limitation, walking, running, cycling; use of scooters, roller skates, skateboards, or other personal mobility devices; or travel in a vehicle with household members to a location where it is possible to walk, run or ride a bike, horseback ride or operate personal mobility devices, while maintaining social distancing practices. Indoor and outdoor playgrounds for children, except those located within childcare centers, shall be closed for all purposes. The City of Los Angeles, following the recommendations and directives of the County Department of Public Health, shall cancel its recreational and cultural programming and close its beaches, public beach parking lots, beach access points, piers, park trails, trail heads, and park facilities. Parks shall remain open for passive recreational activities while practicing social distancing. "Recreation and cultural programming" refers to recreational and cultural activities, indoor and outdoor sports leagues, aquatics classes, instructional courses, and group sessions on City-owned and operated park land. "Park facilities," which shall

be closed to the public, refers to the City's Department of Recreation and Parks facilities, including: skate parks, basketball courts, tennis courts, volleyball courts, baseball fields, Venice Boardwalk (except as necessary to travel to an essential business), Griffith Observatory, Travel Town, Griffith Park train rides and pony rides, the Cabrillo Marine Museum, Sherman Oaks Castle, EXPO Center, and aquatics facilities. Census Centers located at Recreation and Parks facilities may remain open, provided strict adherence to social distancing practices.

(iv) Work in Support of Essential Activities. To perform work providing essential products and services or to otherwise carry out activities specifically permitted in this Order.

(v) To care for or support a friend, family member, or pet in another household.

(vi) Emergency Personnel. All first responders, gang and crisis intervention workers, public health workers, emergency management personnel, emergency dispatchers, law enforcement personnel, and related contractors and others working for emergency services providers are categorically exempt from this Order.

(vii) Essential Activities Exempt. Certain business operations and activities are exempt from the provisions of this Order, on the grounds that they provide services that are recognized to be critical to the health and well-being of the City. These include:

(a) All healthcare operations, including hospitals, clinics, dentists, pharmacies, pharmaceutical and biotechnology companies, medical and scientific research, laboratories, healthcare suppliers, home healthcare services providers, veterinary care and pet day care providers (excluding pet grooming and training), mental and behavioral health providers, substance use providers, physical therapists and chiropractors, cannabis dispensaries, or any related and/or ancillary healthcare services, manufacturers and suppliers. Healthcare operations does not include fitness and exercise gyms and similar facilities.

(b) Grocery stores, water retailers, farm and produce stands, supermarkets, convenience stores, warehouse stores, food banks, and other establishments engaged in the retail sale of canned food, dry goods, fresh fruits and vegetables, pet food and medication supply (but not grooming or training), fresh or frozen meats, fish, and poultry, any other household consumer products (such as construction supplies, cleaning and personal care products). This includes stores that sell beer, wine, and liquor, groceries and other non-grocery products, and products necessary to maintaining the safety, sanitation, and essential operation of residences. The portions of wineries, breweries and tap rooms that provide tastings to the public are closed. Certified farmers markets may operate only if they are able to obtain written approval from the Bureau of Street Services (BSS) and only according to the guidelines set forth by BSS.

(c) Food cultivation, including farming, livestock, and fishing.

(d) Organizations and businesses that provide food, shelter, and social services, and other necessities of life for economically disadvantaged or otherwise

needy individuals (including gang prevention and intervention, domestic violence, and homeless services agencies).

(e) Newspapers, television news, radio, magazine, podcast and journalism.

(f) Gas service stations, auto part supply, mobile auto repair operations, auto repair shops (including, without limitation, auto repair shops that operate adjacent to or otherwise in connection with an used or retail auto dealership), bicycle repair shops and related facilities. No auto dealership may operate, with the exception of its auto service and part stores. Fully automated or self-service car washes are permitted to operate; car washes that require personnel are not permitted to operate.

(g) Banks, credit unions, financial institutions and insurance companies, and pawn shops.

(h) Hardware and building supply stores, day labor centers, and nurseries.

(i) Plumbers, electricians, custodial/janitorial workers, handyman services, funeral home workers and morticians, moving services, HVAC installers, carpenters, day laborers, landscapers, gardeners, exterminators, property managers and leasing agents, private security personnel and other service providers who provide services to maintain the safety, sanitation, and essential operation to properties and other essential activities discussed in this subsection.

(j) Businesses providing mailing and shipping services, boxes and packaging, and post office boxes.

(k) Educational institutions -- including public and private K-12 schools, colleges, and universities -- for purposes of facilitating distance learning or performing essential functions provided that social distancing of six-feet per person is maintained.

(l) Laundromats, dry cleaners, and laundry service providers.

(m) Restaurants and retail food facilities that prepare and offer food to customers, but only via delivery service, to be picked up, or drive-thru. For those establishments offering food pick-up options, proprietors are directed to establish social distancing practices for those patrons in the queue for pick-up. This includes maintaining a distance of at least six-feet away from others. Schools and other entities that typically provide free food services to students or members of the public may continue to do so under this Order on the condition that the food is provided to students or members of the public on a pick-up and carry out basis only. Schools and other entities that provide food services under this exemption shall not permit the food to be eaten at the site where it is provided, or any other gathering site. Cafeterias, commissaries, and restaurants located within hospitals, nursing homes, or similar facilities are also exempt from this Order. Social distancing shall be maintained at a distance of at least six-feet away from others

(n) Businesses that supply or provide storage for products needed for people to work from home.

(o) Businesses that supply other essential businesses with the support, services, or supplies necessary to operate, provided that strict social distancing is maintained. This section includes, without limitation, utility companies.

(p) Individuals and businesses that ship, truck, transport, or provide logistical support to deliver groceries, food, goods, or services directly to residences, or businesses engaged in essential activities or essential infrastructure.

(q) Airlines, taxis, ride sharing services, car rental companies, and other private transportation services providing transportation services necessary for essential activities and other purposes expressly authorized in this Order.

(r) Home-based care for disabled persons, seniors, adults, or children.

(s) Residential facilities and shelters for homeless residents, disabled persons, seniors, adults, children and animals.

(t) Professional services, such as legal, leasing and real estate transactions, payroll or accounting services, when necessary to assist in the permitting, inspection, construction, transfer and recording of ownership of housing, and when necessary to achieve compliance with legally mandated activities. Vacant units and real property may be shown, provided that appointments and other residential viewings must occur virtually or, if a virtual viewing is not feasible, by appointment with no more than two visitors at a time residing within the same household or living unit and one individual showing the unit (except that in-person visits are not allowed when the occupant is still residing in the residence);

(u) Childcare facilities providing services that enable employees exempted in this Order to work as permitted. To the extent possible, childcare facilities must operate under the following mandatory conditions:

(1) Childcare must be carried out in stable groups of 12 or fewer ("stable" means that the same 12 or fewer children are in the same group each day).

(2) Children shall not change from one group to another.

(3) If more than one group of children is cared for at one facility, each group shall be in a separate room. Groups shall not mix with each other.

(4) Childcare providers shall remain solely with one group of children.

(v) Hotels, motels, shared rental units and similar facilities.

(w) Military/Defense Contractors/FFRDC (Federally Funded Research and Development Centers). For purposes of this Order, essential personnel may leave their residence to provide any service or perform any work deemed essential for national security including, without limitation, defense, intelligence, and aerospace development and manufacturing for the Department of Defense, the Intelligence Community, and NASA and other federal government, and or United States Government departments and agencies. Essential personnel include prime, sub-prime, and supplier contractor employees, at both the prime contract level and any supplier level at any tier, working on federal United States Government contracts, such as contracts for national intelligence and national security requirements.

(x) Businesses that manufacture or sell personal protective equipment or cloth or fabric face coverings, and businesses that sell materials for purposes of assembling such face coverings, subject to the following conditions: for manufacturers, at least 50% of daily production must consist of personal

protective equipment, cloth or fabric face covering or other essential products; for retail businesses, their products may be available to purchasers by delivery or pick-up but may not be open to the public. Nothing in this subsection shall be construed to allow otherwise non-essential businesses to render themselves essential for purposes of this Order by adopting similar sales protocols.

(viii) Government Employees. This Order does not apply to employees of government agencies working within the course and scope of their public service employment. Employees of the City of Los Angeles shall follow any current or future directives issued by the Mayor.

(ix) Essential Infrastructure. Individuals may leave their residences to provide any services or goods or perform any work necessary to to build, operate, maintain or manufacture essential infrastructure, including without limitation construction of public health operations, commercial, office and institutional buildings, residential buildings and housing; airport operations, food supply, concessions, and construction; port operations and construction; water, sewer, gas, electrical, oil extraction and refining; roads and highways, public transportation and rail; solid waste collection, removal, and recycling; flood control and watershed protection; internet and telecommunications systems (including the provision of essential global, national, and local infrastructure for computing services, business infrastructure, communications, phone retail sales and servicing, and web-based services); and manufacturing and distribution companies deemed essential to the supply chains of the industries referenced in this Paragraph, provided that they carry out those services and that work in compliance with social distancing practices as prescribed by the Centers for Disease Control and Prevention and the Los Angeles County Department of Public Health, to the extent possible.

(x) Non-Essential Businesses. Businesses regarded under this Order as “non-essential” may be permitted to conduct minimum basic operations including inventory, security, custodial services, payroll and employee benefits processing, and any reasonable activity designed to maximize the ability for its employees to work remotely from their homes.

6. Public Notice of Social Distancing Protocols. The owner, manager, or operator of any business engaged in Essential Activities or Essential Infrastructure under Paragraph 5, shall prepare and post by no later than 11:59 p.m. on April 15, 2020, a Social Distancing Protocol for each of their facilities within the City of Los Angeles. The Social Distancing Protocol must be (i) substantially in the form attached to this Order as Appendix A; (ii) posted at or near the entrance to the facility so that it is easily viewable by the public and employees; and (iii) provided to each employee performing work at the facility. All such businesses shall implement the Social Distancing Protocol and provide evidence of its implementation to any authority enforcing this Order upon demand.

The City of Los Angeles has adopted the County of Los Angeles Department of Public Health Social Distancing Protocol, available for download at <http://coronavirus.lacity.org/socialdistancingprotocol>

Social Distancing Protocols must observe the following safety guidelines:

- a) limit the number of people who may enter into the facility at any one time to ensure that people in the facility can easily maintain, at all times, a minimum six (6) foot distance from others;
- b) designate where lines may form at a facility, marking six (6) foot increments at a minimum, establishing where individuals should stand to maintain adequate social distancing;
- c) provide hand sanitizer, soap and water, or effective disinfectant at or near the entrance of the facility and in other appropriate areas for use by the public and employees;
- d) post a sign in a conspicuous place at all public entries that instructs members of the public to not enter if they are experiencing symptoms of respiratory illness, including fever or cough, and to maintain social distancing from one another;
- e) regularly disinfect high-touch surfaces, including, without limitation all payment portals, pens, and styluses after each use. Businesses engaged in essential activities and essential infrastructure are encouraged to offer touch-less payment mechanisms, if feasible;
- f) provide employees and contracted workers whose duties require close contact (within 6 feet for 10 minutes or more) with other employees and/or the public with cloth face coverings;
- g) require that members of the public who enter the facility wear a face covering during their time in the facility; and
- h) adhere to communicable disease control recommendations provided by the Los Angeles County Department of Public Health, including guidance for cleaning and disinfecting the site. See guidance posted at www.publichealth.lacounty.gov/media/Coronavirus/.

7. To the extent that this Order is in conflict with earlier Orders, this Order shall supersede the others.

8. Failure to comply with this Order shall constitute a misdemeanor subject to fines and imprisonment. I hereby urge the Los Angeles Police Department and

the City Attorney to vigorously enforce this Order via Sections 8.77 and 8.78 of the Los Angeles Administrative Code.

9. If any subsection, sentence, clause, phrase, or word of this Order or any application of it to any person, structure, or circumstance is held to be invalid or unconstitutional by a decision of a court of competent jurisdiction, then such decision shall not affect the validity of the remaining portions or applications of this Order.

This order shall be in place until May 15, 2020, and it may be extended prior to that time.

Dated: April 10, 2020 at Los Angeles, California

Time: _____

Filed with the City Clerk

Date: _____

Time: _____

By: _____

1 **PROOF OF SERVICE**

2 STATE OF CALIFORNIA
3 COUNTY OF LOS ANGELES

4 I, Laura Palmerin, am employed in the City of Long Beach, Los Angeles County,
5 California. I am over the age eighteen (18) years and am not a party to the within action. My
6 business address is 180 East Ocean Boulevard, Suite 200, Long Beach, California 90802.

7 On April 27, 2020, I served the foregoing document(s) described as

8 **REQUEST FOR JUDICIAL NOTICE IN SUPPORT OF PETITIONER TURNER'S**
9 **OPERATIONS, INC.'S EX PARTE APPLICATION FOR TEMPORARY**
10 **RESTRAINING ORDER AND ORDER TO SHOW CAUSE**

11 on the interested parties in this action by placing
12 [] the original
13 [X] a true and correct copy
14 thereof by the following means, addressed as follows:

15 Benjamin F. Chapman, Deputy City Attorney
16 Email: benjamin.chapman@lacity.org
17 Jonathan H. Eisenman, Deputy City Attorney
18 Email: jonathan.eisenman@lacity.org
19 200 North Main Street, 7th Floor, City Hall East
20 Los Angeles, CA 90012
21 Fax No.: (213) 978-0763

22 _____ (BY MAIL) As follows: I am "readily familiar" with the firm's practice of collection and
23 processing correspondence for mailing. Under the practice it would be deposited with the
24 U.S. Postal Service on that same day with postage thereon fully prepaid at Long Beach,
25 California, in the ordinary course of business. I am aware that on motion of the party
26 served, service is presumed invalid if postal cancellation date is more than one day after
27 date of deposit for mailing an affidavit.

28 X (BY ELECTRONIC MAIL) As follows: I served a true and correct copy by electronic
transmission to the emails shown above. Said transmission was reported and completed
without error.

X (STATE) I declare under penalty of perjury under the laws of the State of California that
the foregoing is true and correct.

Executed on April 27, 2020, at Long Beach, California.



Laura Palmerin