

Cases in the U.S.

Cases in the US

Updated August 20, 2020

[Print](#)

TOTAL CASES
5,506,929
46,500 New Cases*

TOTAL DEATHS
172,416
1,404 New Deaths*

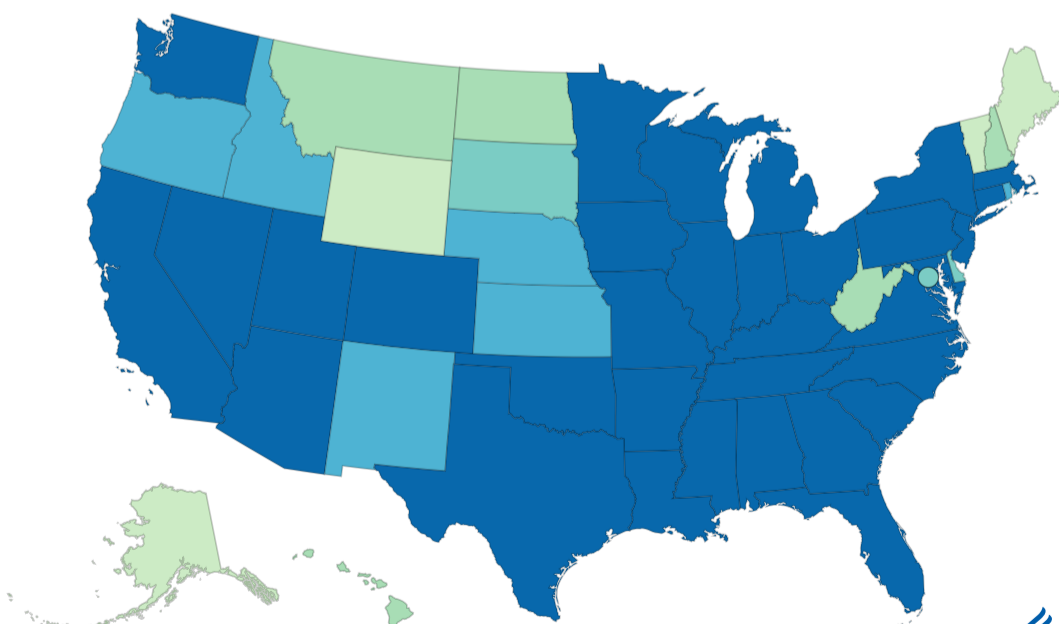


Want More Data?
CDC COVID Data Tracker

This page is updated daily based on data confirmed at 4:00pm ET the day before.

Cases by Jurisdiction

This map shows COVID-19 cases reported by U.S. states, the District of Columbia, New York City, and other U.S.-affiliated jurisdictions. Hover over the maps to see the number of cases reported in each jurisdiction. To go to a jurisdiction's health department website, click on the jurisdiction on the map.



Reported Cases

- 0 to 1,000
- 1,001 to 5,000
- 5,001 to 10,000
- 10,001 to 20,000
- 20,001 to 40,000
- 40,001 or more

- AS
- GU
- MH
- FM
- MP
- PW
- PR
- VI

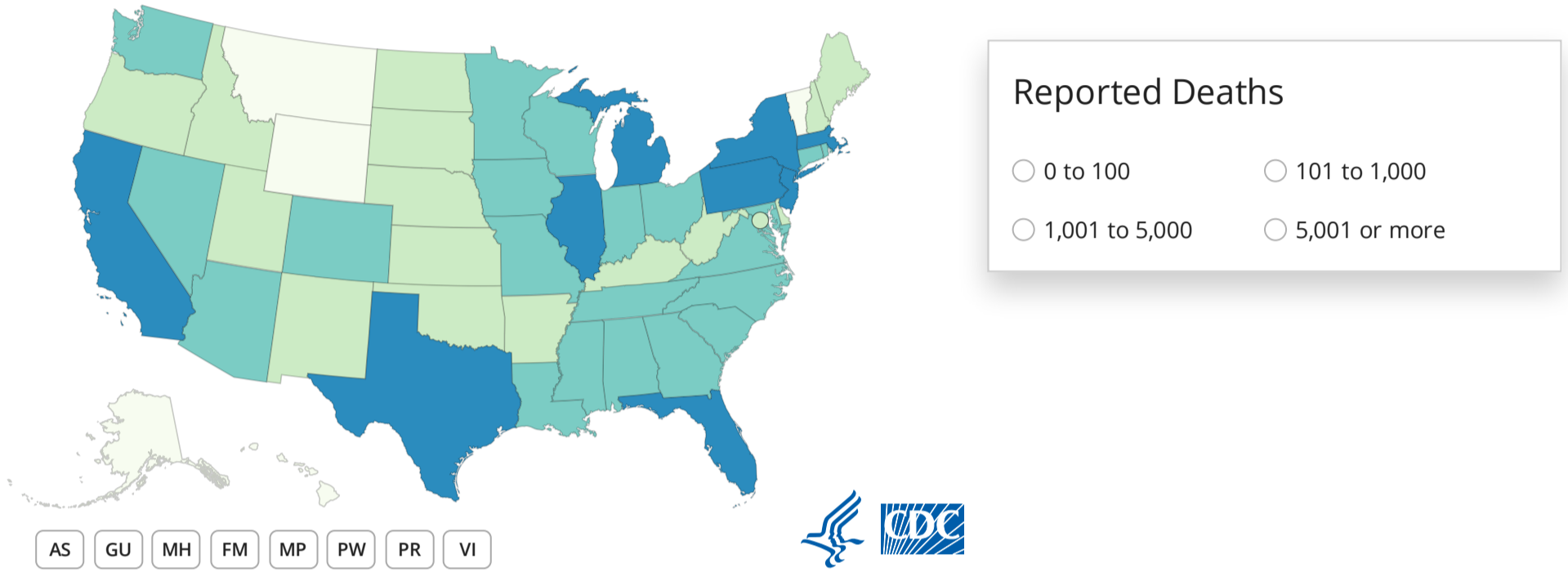


Jurisdictions

Add U.S. Map to Your Website

Deaths by Jurisdiction

This map shows COVID-19 cases reported by U.S. states, the District of Columbia, New York City, and other U.S.-affiliated jurisdictions. Hover over the maps to see the number of deaths reported in each jurisdiction. To go to a jurisdiction's health department website, click on the jurisdiction on the map.



Jurisdictions

Add U.S. Map to Your Website

Cases & Deaths by County

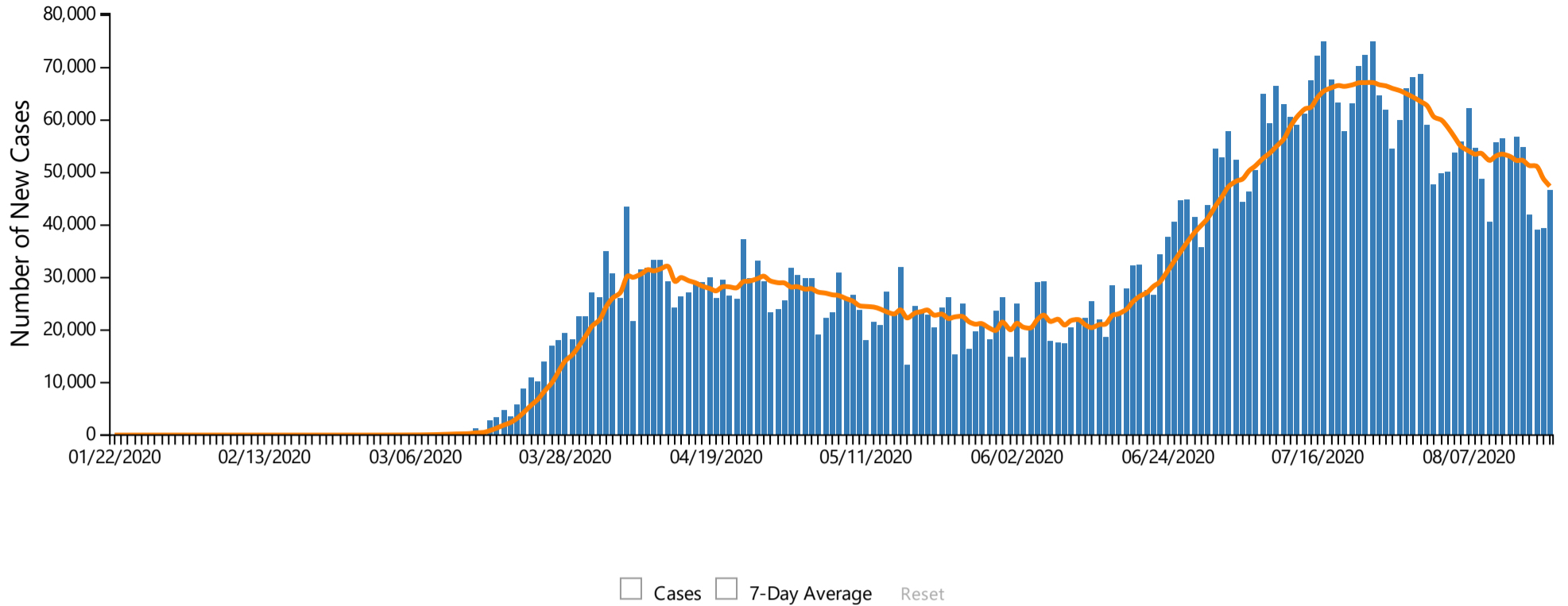
Select a state to view the number of cases and deaths by county. This data is courtesy of USAFacts.org

Select a State

View County Data

New Cases by Day

The following chart shows the number of new COVID-19 cases reported each day in the U.S. since the beginning of the outbreak. Hover over the bars to see the number of new cases by day.



The 7-Day moving average of new cases (current day + 6 preceding days / 7) was calculated to smooth expected variations in daily counts.

View Data +

Cases & Deaths among Healthcare Personnel

Data were collected from 4,111,097 people, but healthcare personnel status was only available for 920,173 (22.4%) people. For the 138,626 cases of COVID-19 among healthcare personnel, death status was only available for 96,686 (69.7%).

<p>CASES AMONG HCP</p> <p style="font-size: 24px; color: #0070C0;">138,626</p>	<p>DEATHS AMONG HCP</p> <p style="font-size: 24px; color: #0070C0;">637</p>
---	--

Previous Data

CDC has moved the following information to the [Previous U.S. COVID-19 Case Data](#) page.

- Level of community transmission by jurisdiction — last updated May 18, 2020
- Total number of cases by day — last updated April 28, 2020
- Number of cases by source of exposure — last updated April 16, 2020
- Number of cases from Wuhan, China and the Diamond Princess cruise — last updated April 16, 2020
- Number of cases by illness start date — last updated April 15, 2020

More Information

[COVIDView – A Weekly Surveillance Summary of U.S. COVID-19 Activity](#)

[Previous U.S. COVID-19 Case Data](#)

[FAQ: COVID-19 Data and Surveillance](#)

Testing Data in the U.S.

Health Departments

Last Updated Aug. 20, 2020